

# Anti-Rbm15/OTT antibody ab244374

**4 References** [画像数 7](#)

### 製品の概要

---

製品名	Anti-Rbm15/OTT antibody
製品の詳細	Rabbit polyclonal to Rbm15/OTT
由来種	Rabbit
アプリケーション	<b>適用あり:</b> ICC/IF, WB, IHC-P
種交差性	<b>交差種:</b> Mouse, Rat, Human
免疫原	Recombinant fragment corresponding to Human Rbm15/OTT aa 250-400. Database link: <a href="#">Q96T37</a>
ポジティブ・コントロール	IHC-P: Human colon tissue. WB: K562, NIH/3T3 and NBT-II cell lysate. ICC/IF: U-2 OS cells.
特記事項	<p>The Life Science industry has been in the grips of a reproducibility crisis for a number of years. Abcam is leading the way in addressing this with our range of recombinant monoclonal antibodies and knockout edited cell lines for gold-standard validation. Please check that this product meets your needs before purchasing.</p> <p>If you have any questions, special requirements or concerns, please send us an inquiry and/or contact our Support team ahead of purchase. Recommended alternatives for this product can be found below, along with publications, customer reviews and Q&amp;As</p>

 [Run BLAST with](#)

 [Run BLAST with](#)

### 製品の特性

---

製品の状態	Liquid
保存方法	Shipped at 4°C. Store at +4°C short term (1-2 weeks). Upon delivery aliquot. Store at -20°C long term. Avoid freeze / thaw cycle.
バッファー	pH: 7.20 Preservative: 0.02% Sodium azide Constituents: PBS, 40% Glycerol (glycerin, glycerine)
精製度	Immunogen affinity purified
ポリモノ	ポリクローナル
アイソタイプ	IgG

### アプリケーション

---

## The Abpromise guarantee

**Abpromise保証は、次のテスト済みアプリケーションにおけるab244374の使用に適用されます**

アプリケーションノートには、推奨の開始希釈率がありますが、適切な希釈率につきましてはご検討ください。

アプリケーション	Abreviews	特記事項
ICC/IF		Use a concentration of 0.25 - 2 µg/ml. Fixation/Permeabilization: PFA/Triton X-100.
WB		Use a concentration of 0.04 - 0.4 µg/ml.
IHC-P		1/20 - 1/50. Perform heat mediated antigen retrieval with citrate buffer pH 6 before commencing with IHC staining protocol.

## ターゲット情報

### 機能

May be implicated in HOX gene regulation.

### 関連疾患

A chromosomal aberration involving RBM15 may be a cause of acute megakaryoblastic leukemia. Translocation t(1;22)(p13;q13) with MKL1. Although both reciprocal fusion transcripts are detected in acute megakaryoblastic leukemia (AMKL, FAB-M7), the RBM15-MKL1 chimeric protein has all the putative functional domains encoded by each gene and is the candidate oncogene.

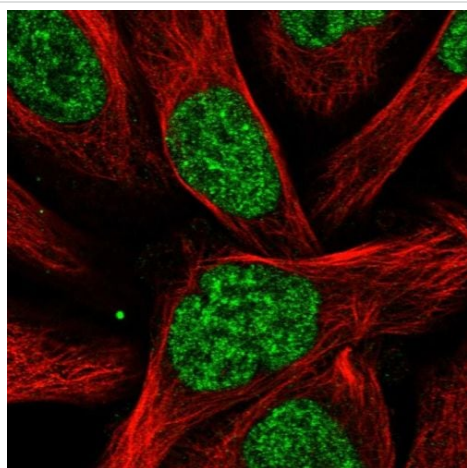
### 配列類似性

Belongs to the RRM Spen family.  
Contains 3 RRM (RNA recognition motif) domains.  
Contains 1 SPOC domain.

### 細胞内局在

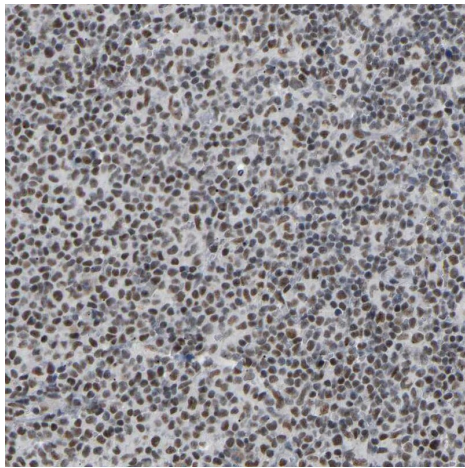
Nucleus.

## 画像



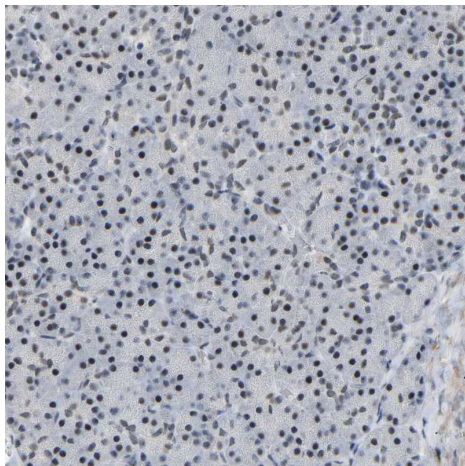
PFA-fixed, Triton X-100 permeabilized U-2 OS (human bone osteosarcoma epithelial cell line) cells stained for Rbm15/OTT (green) using ab244374 at 4 µg/ml in ICC/IF.

Immunocytochemistry/ Immunofluorescence - Anti-Rbm15/OTT antibody (ab244374)



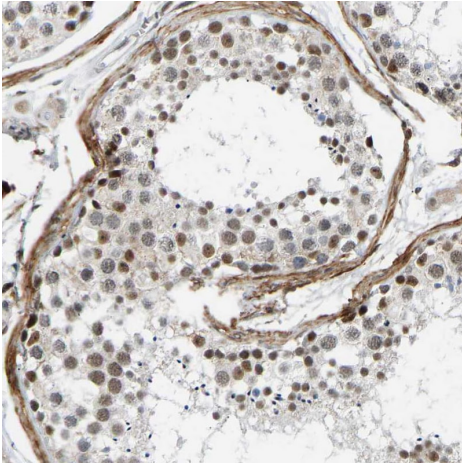
Formalin-fixed, paraffin-embedded human lymph node tissue stained for Rbm15/OTT with ab244374 at a 1/20 dilution in immunohistochemical analysis.

Immunohistochemistry (Formalin/PFA-fixed paraffin-embedded sections) - Anti-Rbm15/OTT antibody (ab244374)



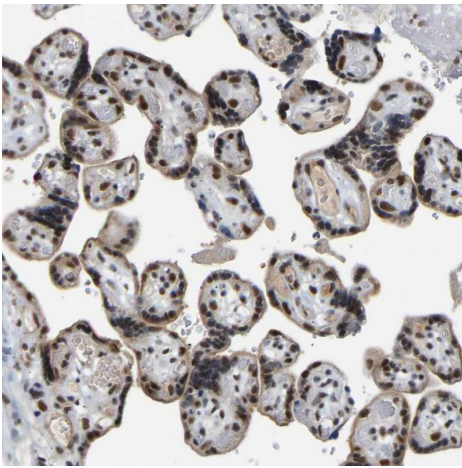
Formalin-fixed, paraffin-embedded human pancreas tissue stained for Rbm15/OTT with ab244374 at a 1/20 dilution in immunohistochemical analysis.

Immunohistochemistry (Formalin/PFA-fixed paraffin-embedded sections) - Anti-Rbm15/OTT antibody (ab244374)



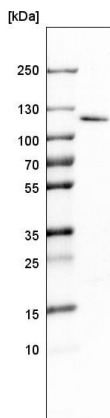
Immunohistochemistry (Formalin/PFA-fixed paraffin-embedded sections) - Anti-Rbm15/OTT antibody (ab244374)

Formalin-fixed, paraffin-embedded human testis tissue stained for Rbm15/OTT with ab244374 at a 1/20 dilution in immunohistochemical analysis.



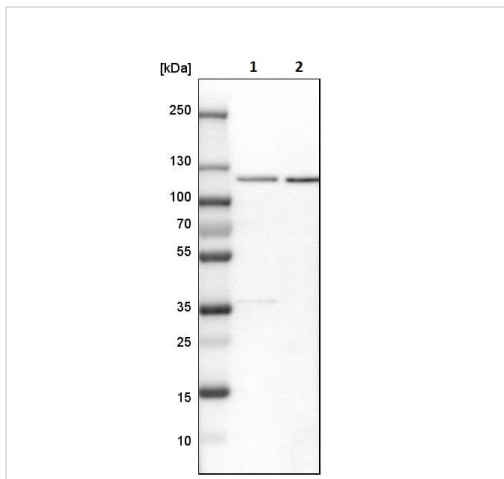
Immunohistochemistry (Formalin/PFA-fixed paraffin-embedded sections) - Anti-Rbm15/OTT antibody (ab244374)

Formalin-fixed, paraffin-embedded human placenta tissue stained for Rbm15/OTT with ab244374 at a 1/20 dilution in immunohistochemical analysis.



Western blot - Anti-Rbm15/OTT antibody (ab244374)

Anti-Rbm15/OTT antibody (ab244374) at 0.4 µg/ml + K562 (Human chronic myelogenous leukemia cell line from bone marrow) cell lysate



Western blot - Anti-Rbm15/OTT antibody (ab244374)

**All lanes :** Anti-Rbm15/OTT antibody (ab244374) at 0.4 µg/ml

**Lane 1 :** NIH/3T3 (Mouse embryo fibroblast cell line) cell lysate

**Lane 2 :** NBT-II (Rat cell line) cell lysate

**Please note:** All products are "FOR RESEARCH USE ONLY. NOT FOR USE IN DIAGNOSTIC PROCEDURES"

### Our Abpromise to you: Quality guaranteed and expert technical support

- Replacement or refund for products not performing as stated on the datasheet
- Valid for 12 months from date of delivery
- Response to your inquiry within 24 hours
- We provide support in Chinese, English, French, German, Japanese and Spanish
- Extensive multi-media technical resources to help you
- We investigate all quality concerns to ensure our products perform to the highest standards

If the product does not perform as described on this datasheet, we will offer a refund or replacement. For full details of the Abpromise, please visit <https://www.abcam.co.jp/abpromise> or contact our technical team.

### Terms and conditions

- Guarantee only valid for products bought direct from Abcam or one of our authorized distributors