

# Anti-RBCK1 antibody ab108479

**2 References** [画像数 2](#)

### 製品の概要

製品名	Anti-RBCK1 antibody
製品の詳細	Rabbit polyclonal to RBCK1
由来種	Rabbit
アプリケーション	<b>適用あり:</b> WB, ICC/IF
種交差性	<b>交差種:</b> Human <b>交差が予測される動物種:</b> Chimpanzee, Macaque monkey 
免疫原	Synthetic peptide. This information is proprietary to Abcam and/or its suppliers.
ポジティブ・コントロール	This antibody gave a positive signal in the following whole cell lysates: Jurkat; HEK293; HepG2. This antibody gave a positive signal in the following formaldehyde fixed cell lines: HepG2.
特記事項	<p>The Life Science industry has been in the grips of a reproducibility crisis for a number of years. Abcam is leading the way in addressing this with our range of recombinant monoclonal antibodies and knockout edited cell lines for gold-standard validation. Please check that this product meets your needs before purchasing.</p> <p>If you have any questions, special requirements or concerns, please send us an inquiry and/or contact our Support team ahead of purchase. Recommended alternatives for this product can be found below, along with publications, customer reviews and Q&amp;As</p>

### 製品の特性

製品の状態	Liquid
保存方法	Shipped at 4°C. Store at +4°C short term (1-2 weeks). Upon delivery aliquot. Store at -20°C or -80°C. Avoid freeze / thaw cycle.
バッファー	pH: 7.40 Preservative: 0.02% Sodium azide Constituent: PBS  Batches of this product that have a concentration < 1mg/ml may have BSA added as a stabilising agent. If you would like information about the formulation of a specific lot, please contact our scientific support team who will be happy to help.
精製度	Immunogen affinity purified
ポリ/モノ	ポリクローナル

## アプリケーション

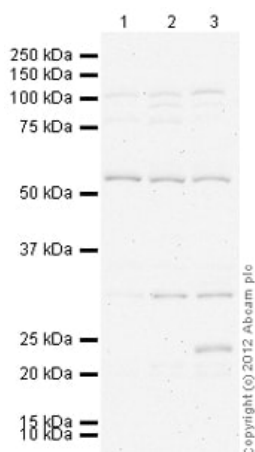
**The Abpromise guarantee** Abpromise保証は、次のテスト済みアプリケーションにおけるab108479の使用に適用されず  
アプリケーションノートには、推奨の開始希釈率がありますが、適切な希釈率につきましてはご検討ください。

アプリケーション	Abreviews	特記事項
WB		Use a concentration of 1 µg/ml. Detects a band of approximately 57 kDa (predicted molecular weight: 57 kDa).
ICC/IF		Use a concentration of 5 µg/ml.

## ターゲット情報

<b>機能</b>	Acts as an E3 ubiquitin-protein ligase, or as part of an E3 complex, which accepts ubiquitin from specific E2 ubiquitin-conjugating enzymes, such as UBE2L3/UBCM4, and then transfers it to substrates. Functions as an E3 ligase for oxidized IREB2 and both heme and oxygen are necessary for IREB2 ubiquitination. Promotes ubiquitination of TAB2 and IRF3 and their degradation by the proteasome. Component of the LUBAC complex which conjugates linear polyubiquitin chains in a head-to-tail manner to substrates. LUBAC conjugates linear polyubiquitin to IKBKG at 'Lys-285' and 'Lys-309' and is involved in activation of the canonical NF-kappa-B and the JNK signaling pathways. LUBAC is proposed to be recruited to the TNF-R1 signaling complex (TNF-RSC) following polyubiquitination of TNF-RSC components by BIRC2 and/or BIRC3 and to conjugate linear polyubiquitin to IKBKG and possibly other components contributing to the stability of the complex. Binds polyubiquitin of different linkage types.
<b>配列類似性</b>	Contains 1 B box-type zinc finger. Contains 1 RanBP2-type zinc finger. Contains 1 RING-type zinc finger. Contains 1 ubiquitin-like domain.
<b>翻訳後修飾</b>	Auto-ubiquitinated. Auto-ubiquitination leads to degradation by the proteasome. Phosphorylated. In vitro, phosphorylation inhibits auto-ubiquitination activity.

## 画像



Western blot - Anti-RBCK1 antibody (ab108479)

**All lanes :** Anti-RBCK1 antibody (ab108479) at 1 µg/ml (Milk blocking - 5%)

**Lane 1 :** Jurkat (Human T cell lymphoblast-like cell line) Whole Cell Lysate

**Lane 2 :** HEK293 (Human embryonic kidney cell line) Whole Cell Lysate

**Lane 3 :** HepG2 (Human hepatocellular liver carcinoma cell line) Whole Cell Lysate

Lysates/proteins at 20 µg per lane.

### Secondary

**All lanes :** Goat Anti-Rabbit IgG H&L (HRP) preadsorbed (**ab97080**) at 1/5000 dilution

Developed using the ECL technique.

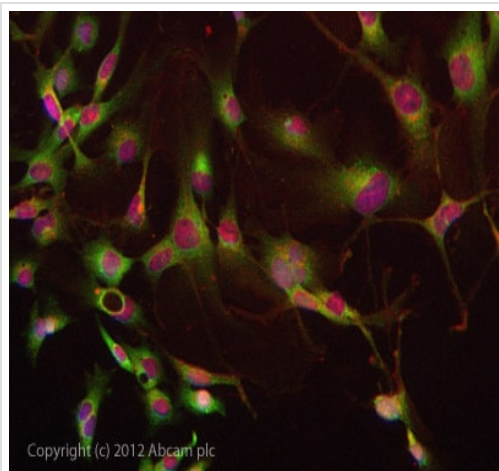
Performed under reducing conditions.

**Predicted band size:** 57 kDa

**Observed band size:** 57 kDa

**Additional bands at:** 102 kDa, 24 kDa, 32 kDa. We are unsure as to the identity of these extra bands.

**Exposure time:** 20 minutes



Immunocytochemistry/ Immunofluorescence - Anti-RBCK1 antibody (ab108479)

ICC/IF image of ab108479 stained HepG2 cells. The cells were 4% formaldehyde fixed (10 min) and then incubated in 1%BSA / 10% normal goat serum / 0.3M glycine in 0.1% PBS-Tween for 1h to permeabilise the cells and block non-specific protein-protein interactions. The cells were then incubated with the antibody ab108479 at 5µg/ml overnight at +4°C. The secondary antibody (green) was DyLight® 488 goat anti- rabbit (**ab96899**) IgG (H+L) used at a 1/250 dilution for 1h. Alexa Fluor® 594 WGA was used to label plasma membranes (red) at a 1/200 dilution for 1h. DAPI was used to stain the cell nuclei (blue) at a concentration of 1.43µM.

**Please note:** All products are "FOR RESEARCH USE ONLY. NOT FOR USE IN DIAGNOSTIC PROCEDURES"

### Our Abpromise to you: Quality guaranteed and expert technical support

---

- Replacement or refund for products not performing as stated on the datasheet
- Valid for 12 months from date of delivery
- Response to your inquiry within 24 hours
- We provide support in Chinese, English, French, German, Japanese and Spanish
- Extensive multi-media technical resources to help you
- We investigate all quality concerns to ensure our products perform to the highest standards

If the product does not perform as described on this datasheet, we will offer a refund or replacement. For full details of the Abpromise, please visit <https://www.abcam.co.jp/abpromise> or contact our technical team.

### Terms and conditions

---

- Guarantee only valid for products bought direct from Abcam or one of our authorized distributors