

Rat IgG2a, kappa monoclonal [RTK2758] - Isotype Control ab18450

12 References **画像数 1**

製品の概要

製品名	Rat IgG2a, kappa monoclonal [RTK2758] - Isotype Control
特記事項 (標識)	Please note that this antibody is unconjugated.
アプリケーション	適用あり: ICC/IF, Flow Cyt, IP, WB, IHC-P, IHC-Fr
免疫原	Trinitrophenol + KLH
特記事項	<p>ab18450 RTK2758 immunoglobulin reacts with KLH. The RTK2758 immunoglobulin was chosen as an isotype control after screening on a variety of resting, activated, live, and fixed mouse and human tissues. RTK2758 immunoglobulin is useful as an isotype-matched control in Western blotting, immunoprecipitation, immunohistochemical staining, bioassay and immunofluorescent staining (surface or intracellular) for flow cytometric analysis.</p> <p>The Life Science industry has been in the grips of a reproducibility crisis for a number of years. Abcam is leading the way in addressing this with our range of recombinant monoclonal antibodies and knockout edited cell lines for gold-standard validation. Please check that this product meets your needs before purchasing.</p> <p>If you have any questions, special requirements or concerns, please send us an inquiry and/or contact our Support team ahead of purchase. Recommended alternatives for this product can be found below, along with publications, customer reviews and Q&As</p>

製品の特性

製品の状態	Liquid
保存方法	Shipped at 4°C. Store at +4°C. Do Not Freeze.
バッファー	<p>pH: 7.20</p> <p>Preservative: 0.09% Sodium azide</p> <p>Constituent: PBS</p> <p>0.2 µm filter sterilized</p>
精製度	Immunogen affinity purified
特記事項 (精製)	The immunoglobulin was purified by affinity chromatography.
アイソタイプ・コントロール 備考	ab18450 RTK2758 immunoglobulin reacts with KLH. The RTK2758 immunoglobulin was chosen

as an isotype control after screening on a variety of resting, activated, live, and fixed mouse and human tissues. RTK2758 immunoglobulin is useful as an isotype-matched control in Western blotting, immunoprecipitation, immunohistochemical staining, bioassay and immunofluorescent staining (surface or intracellular) for flow cytometric analysis.

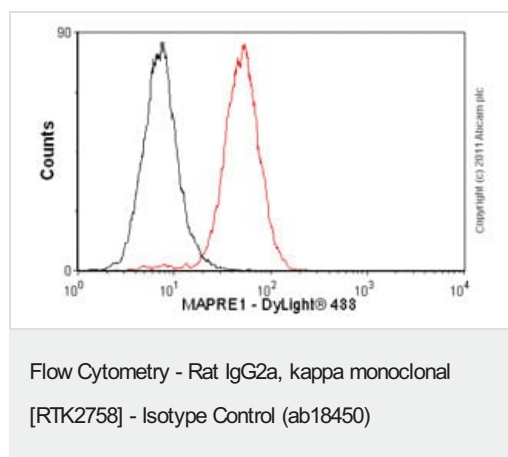
ポリ/モノ	モノクローナル
クローン名	RTK2758
アイソタイプ	IgG2a
軽鎖の種類	kappa

アプリケーション

The Abpromise guarantee Abpromise保証は、次のテスト済みアプリケーションにおけるab18450の使用に適用されます
アプリケーションノートには、推奨の開始希釈率がありますが、適切な希釈率につきましてはご確認ください。

アプリケーション	Abreviews	特記事項
ICC/IF		Use at an assay dependent concentration.
Flow Cyt		Use 2µg for 10 ⁶ cells. ab18450 is a negative isotype control.
IP		Use at an assay dependent concentration.
WB		Use at an assay dependent concentration.
IHC-P		Use at an assay dependent concentration.
IHC-Fr		Use at an assay dependent concentration.

画像



Overlay histogram showing HeLa cells stained with **ab53358** (red line). The cells were fixed with 4% paraformaldehyde (10 min) and then permeabilized with 0.1% PBS-Tween for 20 min. The cells were then incubated in 1x PBS / 10% normal goat serum / 0.3M glycine to block non-specific protein-protein interactions. The cells were then incubated with the antibody (**ab53358**, 1µg/1x10⁶ cells) for 30 min at 22°C. The secondary antibody used was DyLight[®] 488 goat anti-rat IgG (H+L) (**ab98386**) at 1/500 dilution for 30 min at 22°C. Isotype control antibody (black line) was rat IgG2a, kappa monoclonal [aRTK2758] (ab18450, 2µg/1x10⁶ cells) used under the same conditions. Acquisition of >5,000 events was performed. This antibody gave a positive signal in HeLa cells fixed with 80% methanol (5 min)/permeabilized in 0.1% PBS-Tween used under the same conditions.

Please note: All products are "FOR RESEARCH USE ONLY. NOT FOR USE IN DIAGNOSTIC PROCEDURES"

Our Abpromise to you: Quality guaranteed and expert technical support

- Replacement or refund for products not performing as stated on the datasheet
- Valid for 12 months from date of delivery
- Response to your inquiry within 24 hours

- We provide support in Chinese, English, French, German, Japanese and Spanish
- Extensive multi-media technical resources to help you
- We investigate all quality concerns to ensure our products perform to the highest standards

If the product does not perform as described on this datasheet, we will offer a refund or replacement. For full details of the Abpromise, please visit <https://www.abcam.co.jp/abpromise> or contact our technical team.

Terms and conditions

- Guarantee only valid for products bought direct from Abcam or one of our authorized distributors