

Anti-RASSF1a antibody [3F3] ab23950

26 References **画像数 6**

製品の概要

製品名	Anti-RASSF1a antibody [3F3]
製品の詳細	Mouse monoclonal [3F3] to RASSF1a
由来種	Mouse
特異性	In many cases, the results of staining showed speckled pattern or weak staining in cytoplasm but we couldn't observe microtubule stained with this antibody. In mitotic cell, we could observe the mitotic spindles stained with this antibody and so thought it was kinetochore stained specifically.
アプリケーション	適用あり: ELISA, IHC-P, WB, ICC/IF, Flow Cyt
種交差性	交差種: Mouse, Human
免疫原	Recombinant full length protein corresponding to Human RASSF1a aa 1-350. Purified from E.coli Database link: Q9NS23-2
エピトープ	ab23950 specifically recognises the C1 domain (52-101aa) of RASSF1a
ポジティブ・コントロール	WB: HeLa lysate, 293cells transfected with HA-tagged RASSF 1A gene ICC: A431 cells
特記事項	<p>This product was changed from ascites to tissue culture supernatant on 28/02/19. Please note that the dilutions may need to be adjusted accordingly. If you have any questions, please do not hesitate to contact our scientific support team.</p> <p>The Life Science industry has been in the grips of a reproducibility crisis for a number of years. Abcam is leading the way in addressing this with our range of recombinant monoclonal antibodies and knockout edited cell lines for gold-standard validation. Please check that this product meets your needs before purchasing.</p> <p>If you have any questions, special requirements or concerns, please send us an inquiry and/or contact our Support team ahead of purchase. Recommended alternatives for this product can be found below, along with publications, customer reviews and Q&As</p>

製品の特性

製品の状態	Liquid
保存方法	Shipped at 4°C. Store at +4°C short term (1-2 weeks). Upon delivery aliquot. Store at -20°C long term.
バッファー	pH: 7.40 Preservative: 0.02% Sodium azide Constituents: PBS, 10% Glycerol

精製度	Protein G purified
ポリ/モノ	モノクローナル
クローン名	3F3
ミエローマ	Sp2/0
アイソタイプ	IgG1
軽鎖の種類	kappa

アプリケーション

The Abpromise guarantee **Abpromise保証は、次のテスト済みアプリケーションにおけるab23950の使用に適用されます**

アプリケーションノートには、推奨の開始希釈率がありますが、適切な希釈率につきましてはご検討ください。

アプリケーション	Abreviews	特記事項
ELISA		Use at an assay dependent concentration.
IHC-P		Use at an assay dependent concentration.
WB		1/500 - 1/2000. Detects a band of approximately 40 kDa (predicted molecular weight: 39 kDa).
ICC/IF		1/100. Use at an assay dependent dilution. Use a biotinylated secondary antibody and Texas-red conjugated streptavidin. Use 4% paraformaldehyde as fixative for 20min and permeabilize in 0.4% Triton X-100.
Flow Cyt		Use at an assay dependent concentration. ab170190 - Mouse monoclonal IgG1, is suitable for use as an isotype control with this antibody.

ターゲット情報

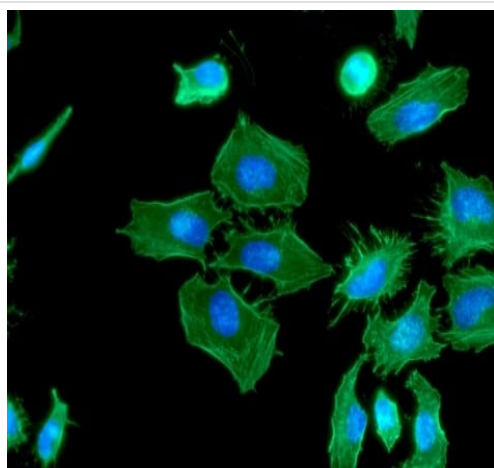
機能	Potential tumor suppressor. Required for death receptor-dependent apoptosis. Mediates activation of STK4 during Fas-induced apoptosis. When associated with MOAP1, promotes BAX conformational change and translocation to mitochondrial membranes in response to TNF and TNFSF10 stimulation. Isoform A interacts with CDC20, an activator of the anaphase-promoting complex, APC, resulting in the inhibition of APC activity and mitotic progression. Inhibits proliferation by negatively regulating cell cycle progression at the level of G1/S-phase transition by regulating accumulation of cyclin D1 protein. Isoform C has been shown not to perform these roles, no function has been identified for this isoform. Isoform A disrupts interactions among MDM2, DAXX and USP7, thus contributing to the efficient activation of TP53 by promoting MDM2 self-ubiquitination in cell-cycle checkpoint control in response to DNA damage.
組織特異性	Isoform A and isoform C are ubiquitously expressed in all tissues tested, however isoform A is absent in many corresponding cancer cell lines. Isoform B is mainly expressed in hematopoietic cells.
配列類似性	Contains 1 phorbol-ester/DAG-type zinc finger. Contains 1 Ras-associating domain.

細胞内局在

Contains 1 SARAH domain.

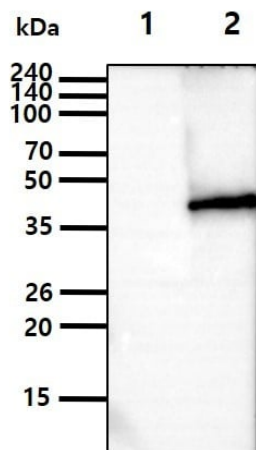
Nucleus. Predominantly nuclear and Cytoplasm > cytoskeleton. Cytoplasm > cytoskeleton > centrosome. Cytoplasm > cytoskeleton > spindle. Cytoplasm > cytoskeleton > spindle pole. Nucleus. Localizes to cytoplasmic microtubules during interphase, to bipolar centrosomes associated with microtubules during prophase, to spindle fibers and spindle poles at metaphase and anaphase, to the midzone during early telophase, and to the midbody in late telophase in cells. Colocalizes with MDM2 in the nucleus.

画像



Immunocytochemistry/ Immunofluorescence - Anti-RASSF1a antibody [3F3] (ab23950)

Immunocytochemistry/ Immunofluorescence analysis of RASSF1a in HeLa cells. The cell was stained with ab23950 (1:100). The secondary antibody (green) was used Alexa Fluor 488. DAPI was stained the cell nucleus (blue).



Western blot - Anti-RASSF1a antibody [3F3] (ab23950)

All lanes : Anti-RASSF1a antibody [3F3] (ab23950) at 1/500 dilution

Lane 1 : 293T cell lysate

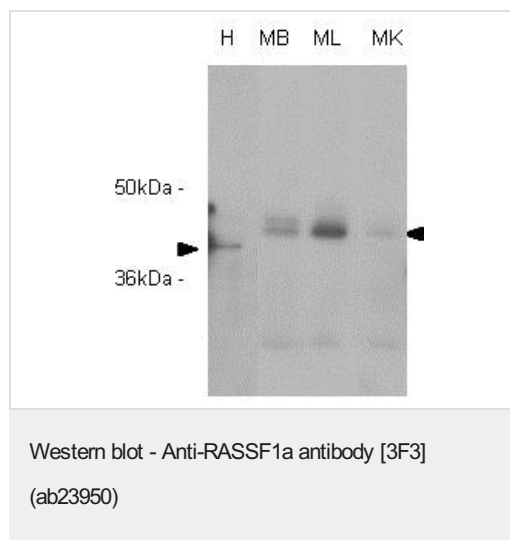
Lane 2 : RASSF1A transfected 293T cell lysate

Lysates/proteins at 5 µg per lane.

Secondary

All lanes : goat anti-mouse secondary antibody conjugated to HRP

Predicted band size: 39 kDa



All lanes : Anti-RASSF1a antibody [3F3] (ab23950) at 1/1000 dilution

Lane 1 : Hela (H) cell extract

Lane 2 : Mouse brain (MB) extract

Lane 3 : Mouse liver (ML) extract

Lane 4 : Mouse kidney (MK) extract

Lysates/proteins at 20 µg per lane.

Secondary

All lanes : Goat anti-mouse HRP conjugate

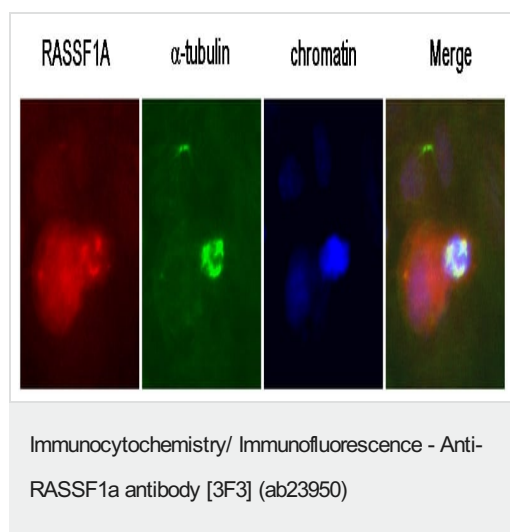
Developed using the ECL technique.

Predicted band size: 39 kDa

Observed band size: 40,43 kDa

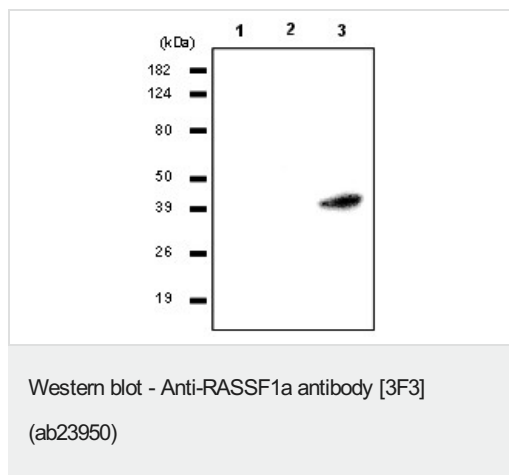
Arrows indicate RASSF1A protein (about 40kDa in Hela cells, and 43kDa in other tissues from mice).

This image was generated using the ascites version of the product.



A431 cells were labeled with anti-RASSF1a(clone 3F3) ab23950. Detection was done using a biotinylated secondary antibody and Texas-red conjugated streptavidin.

This image was generated using the ascites version of the product.



All lanes : Anti-RASSF1a antibody [3F3] (ab23950) at 1/1000 dilution

Lane 1 : HEK293 cells

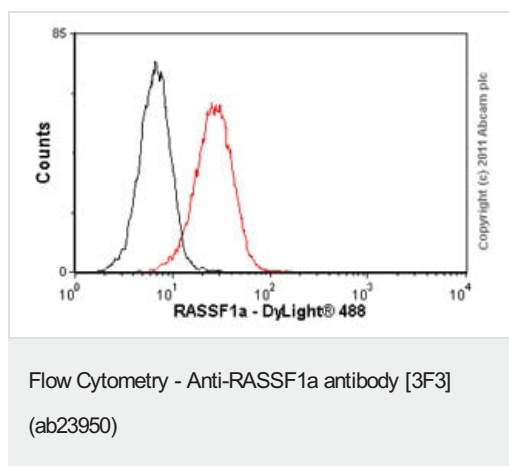
Lane 2 : A549 cells

Lane 3 : HeLa cells

Predicted band size: 39 kDa

Proteins were visualised using a goat anti-mouse secondary antibody conjugation to HRP and a ECL detection system.

This image was generated using the ascites version of the product.



Overlay histogram showing HeLA cells stained with ab23950 (red line). The cells were fixed with 100% methanol (5 min) and then permeabilized with 0.1% PBS-Tween for 20 min. The cells were then incubated in 1x PBS / 10% normal goat serum / 0.3M glycine to block non-specific protein-protein interactions followed by the antibody (ab23950, 2µg/1x10⁶ cells) for 30 min at 22°C. The secondary antibody used was DyLight® 488 goat anti-mouse IgG (H+L) ([ab96879](#)) at 1/500 dilution for 30 min at 22°C. Isotype control antibody (black line) was Mouse IgG1 [ICIGG1] ([ab91353](#), 2µg/1x10⁶ cells) used under the same conditions. Acquisition of >5,000 events was performed.

This image was generated using the ascites version of the product.

Please note: All products are "FOR RESEARCH USE ONLY. NOT FOR USE IN DIAGNOSTIC PROCEDURES"

Our Abpromise to you: Quality guaranteed and expert technical support

- Replacement or refund for products not performing as stated on the datasheet
- Valid for 12 months from date of delivery
- Response to your inquiry within 24 hours
- We provide support in Chinese, English, French, German, Japanese and Spanish
- Extensive multi-media technical resources to help you
- We investigate all quality concerns to ensure our products perform to the highest standards

If the product does not perform as described on this datasheet, we will offer a refund or replacement. For full details of the Abpromise, please visit <https://www.abcam.co.jp/abpromise> or contact our technical team.

Terms and conditions

- Guarantee only valid for products bought direct from Abcam or one of our authorized distributors