

### Anti-RASSF1 antibody [EPR7127] ab126764

リコンビナント **RabMAb**

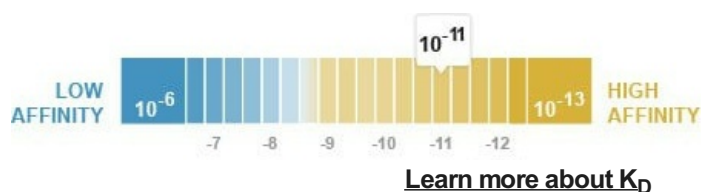
★★★★☆ **2 Abreviews** **2 References** 画像数 4

#### 製品の概要

製品名	Anti-RASSF1 antibody [EPR7127]
製品の詳細	Rabbit monoclonal [EPR7127] to RASSF1
由来種	Rabbit
アプリケーション	<b>適用あり:</b> WB, IHC-P <b>適用なし:</b> Flow Cyt, ICC/IF or IP
種交差性	<b>交差種:</b> Human
免疫原	Synthetic peptide. This information is proprietary to Abcam and/or its suppliers.
ポジティブ・コントロール	HeLa, Human fetal liver, HepG2, and 293T lysates; Human colon tissue.
特記事項	<p>This product is a recombinant monoclonal antibody, which offers several advantages including:</p> <ul style="list-style-type: none"> <li>- High batch-to-batch consistency and reproducibility</li> <li>- Improved sensitivity and specificity</li> <li>- Long-term security of supply</li> <li>- Animal-free production</li> </ul> <p>For more information <a href="#">see here</a>.</p> <p>Our RabMAb<sup>®</sup> technology is a patented hybridoma-based technology for making rabbit monoclonal antibodies. For details on our patents, please refer to <a href="#">RabMAb<sup>®</sup> patents</a>.</p> <p>Mouse, Rat: We have preliminary internal testing data to indicate this antibody may not react with these species. Please contact us for more information.</p>

#### 製品の特性

製品の状態	Liquid
保存方法	Shipped at 4°C. Store at -20°C. Stable for 12 months at -20°C.
解離定数 (K <sub>D</sub> 値)	K <sub>D</sub> = 7.50 x 10 <sup>-11</sup> M



バッファー	pH: 7.20 Preservative: 0.01% Sodium azide Constituents: 9% PBS, 40% Glycerol (glycerin, glycerine), 0.05% BSA, 50% Tissue culture supernatant
精製度	Protein A purified
ポリ/モノ	モノクローナル
クローン名	EPR7127
アイソタイプ	IgG

## アプリケーション

**The Abpromise guarantee** Abpromise保証は、 次のテスト済みアプリケーションにおけるab126764の使用に適用されます  
アプリケーションノートには、推奨の開始希釈率がありますが、適切な希釈率につきましてはご検討ください。

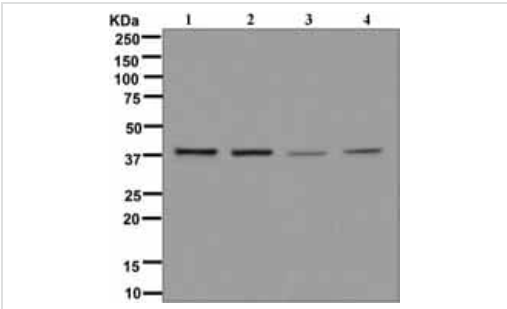
アプリケーション	Abreviews	特記事項
WB	★★★★☆ (2)	1/1000 - 1/10000. Detects a band of approximately 39 kDa (predicted molecular weight: 39 kDa).
IHC-P		1/50 - 1/100. Perform heat mediated antigen retrieval before commencing with IHC staining protocol.

**追加情報** Is unsuitable for Flow Cyt, ICC/IF or IP.

## ターゲット情報

機能	Potential tumor suppressor. Required for death receptor-dependent apoptosis. Mediates activation of STK4 during Fas-induced apoptosis. When associated with MOAP1, promotes BAX conformational change and translocation to mitochondrial membranes in response to TNF and TNFSF10 stimulation. Isoform A interacts with CDC20, an activator of the anaphase-promoting complex, APC, resulting in the inhibition of APC activity and mitotic progression. Inhibits proliferation by negatively regulating cell cycle progression at the level of G1/S-phase transition by regulating accumulation of cyclin D1 protein. Isoform C has been shown not to perform these roles, no function has been identified for this isoform. Isoform A disrupts interactions among MDM2, DAXX and USP7, thus contributing to the efficient activation of TP53 by promoting MDM2 self-ubiquitination in cell-cycle checkpoint control in response to DNA damage.
組織特異性	Isoform A and isoform C are ubiquitously expressed in all tissues tested, however isoform A is absent in many corresponding cancer cell lines. Isoform B is mainly expressed in hematopoietic cells.
配列類似性	Contains 1 phorbol-ester/DAG-type zinc finger. Contains 1 Ras-associating domain. Contains 1 SARAH domain.
細胞内局在	Nucleus. Predominantly nuclear and Cytoplasm > cytoskeleton. Cytoplasm > cytoskeleton > centrosome. Cytoplasm > cytoskeleton > spindle. Cytoplasm > cytoskeleton > spindle pole. Nucleus. Localizes to cytoplasmic microtubules during interphase, to bipolar centrosomes associated with microtubules during prophase, to spindle fibers and spindle poles at metaphase and anaphase, to the midzone during early telophase, and to the midbody in late telophase in cells. Colocalizes with MDM2 in the nucleus.

画像



Western blot - Anti-RASSF1 antibody [EPR7127] (ab126764)

**All lanes :** Anti-RASSF1 antibody [EPR7127] (ab126764) at 1/1000 dilution

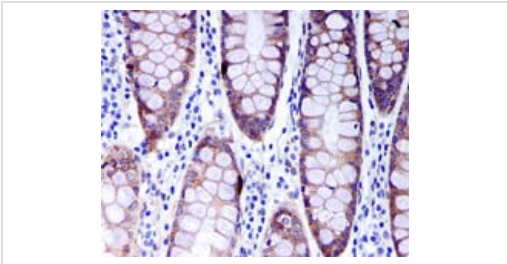
- Lane 1 :** HeLa cell lysate
- Lane 2 :** Human fetal liver tissue lysate
- Lane 3 :** HepG2 cell lysate
- Lane 4 :** 293T (Human embryonic kidney epithelial cell) cell lysate

Lysates/proteins at 10 µg per lane.

Secondary

**All lanes :** Goat anti-Rabbit HRP at 1/2000 dilution

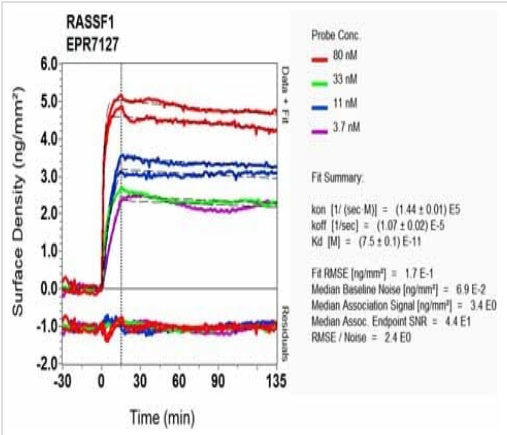
**Predicted band size:** 39 kDa



Immunohistochemistry (Formalin/PFA-fixed paraffin-embedded sections) - Anti-RASSF1 antibody [EPR7127] (ab126764)

ab126764, at 1/50, staining RASSF1 in Paraffin-embedded Human colon tissue by Immunohistochemistry.

Perform heat mediated antigen retrieval before commencing with IHC staining protocol.



OIR-D Scanning - Anti-RASSF1 antibody [EPR7127] (ab126764)

Equilibrium disassociation constant ( $K_D$ )

Learn more about  $K_D$

[Click here to learn more about  \$K\_D\$](#)

### Why choose a recombinant antibody?



**Research with confidence**  
Consistent and reproducible results



**Long-term and scalable supply**  
Recombinant technology



**Success from the first experiment**  
Confirmed specificity



**Ethical standards compliant**  
Animal-free production

Anti-RASSF1 antibody [EPR7127] (ab126764)

**Please note:** All products are "FOR RESEARCH USE ONLY. NOT FOR USE IN DIAGNOSTIC PROCEDURES"

### Our Abpromise to you: Quality guaranteed and expert technical support

---

- Replacement or refund for products not performing as stated on the datasheet
- Valid for 12 months from date of delivery
- Response to your inquiry within 24 hours
- We provide support in Chinese, English, French, German, Japanese and Spanish
- Extensive multi-media technical resources to help you
- We investigate all quality concerns to ensure our products perform to the highest standards

If the product does not perform as described on this datasheet, we will offer a refund or replacement. For full details of the Abpromise, please visit <https://www.abcam.co.jp/abpromise> or contact our technical team.

### Terms and conditions

---

- Guarantee only valid for products bought direct from Abcam or one of our authorized distributors