


Anti-RASGEF1B antibody ab168323

[1 Abreviews](#) [画像数 1](#)

製品の概要

製品名	Anti-RASGEF1B antibody
製品の詳細	Mouse polyclonal to RASGEF1B
由来種	Mouse
アプリケーション	適用あり: WB
種交差性	交差種: Human 交差が予測される動物種: Cow, Orangutan 
免疫原	Recombinant full length corresponding to amino acids 1-210 of Human RASGEF1B according to AAH36784.1 Run BLAST with Expasy Run BLAST with NCBI
ポジティブ・コントロール	RASGEF1B transfected 293T cells
特記事項	<p>The Life Science industry has been in the grips of a reproducibility crisis for a number of years. Abcam is leading the way in addressing this with our range of recombinant monoclonal antibodies and knockout edited cell lines for gold-standard validation. Please check that this product meets your needs before purchasing.</p> <p>If you have any questions, special requirements or concerns, please send us an inquiry and/or contact our Support team ahead of purchase. Recommended alternatives for this product can be found below, along with publications, customer reviews and Q&As</p>

製品の特性

製品の状態	Liquid
保存方法	Shipped at 4°C. Store at +4°C short term (1-2 weeks). Upon delivery aliquot. Store at -20°C long term.
バッファー	pH: 7.4 Constituent: 100% PBS
精製度	Protein A purified
ポリ/モノ	ポリクローナル
アイソタイプ	IgG

アプリケーション

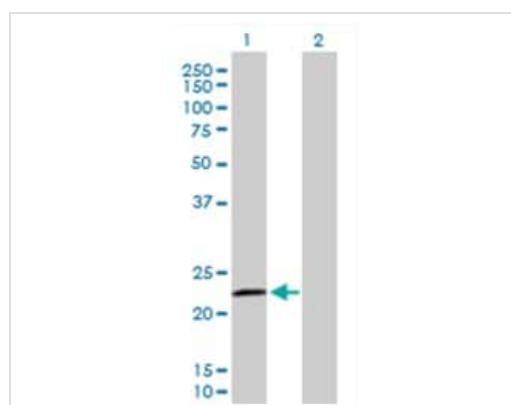
The Abpromise guarantee **Abpromise保証は、次のテスト済みアプリケーションにおけるab168323の使用に適用されます**
アプリケーションノートには、推奨の開始希釈率がありますが、適切な希釈率につきましてはご検討ください。

アプリケーション	Abreviews	特記事項
WB		Use a concentration of 1 µg/ml. Predicted molecular weight: 55 kDa.

ターゲット情報

機能	Guanine nucleotide exchange factor (GEF) with specificity for RAP2A and other Ras family proteins (in vitro).
配列類似性	Contains 1 N-terminal Ras-GEF domain. Contains 1 Ras-GEF domain.

画像



Western blot - Anti-RASGEF1B antibody (ab168323)

All lanes : Anti-RASGEF1B antibody (ab168323) at 1 µg

Lane 1 : RASGEF1B transfected 293T cells

Lane 2 : non transfected 293T cells

Lysates/proteins at 15 µl per lane.

Secondary

All lanes : Goat Anti-Mouse IgG at 1/2500 dilution

Predicted band size: 55 kDa

Please note: All products are "FOR RESEARCH USE ONLY. NOT FOR USE IN DIAGNOSTIC PROCEDURES"

Our Abpromise to you: Quality guaranteed and expert technical support

- Replacement or refund for products not performing as stated on the datasheet
- Valid for 12 months from date of delivery
- Response to your inquiry within 24 hours
- We provide support in Chinese, English, French, German, Japanese and Spanish
- Extensive multi-media technical resources to help you
- We investigate all quality concerns to ensure our products perform to the highest standards

If the product does not perform as described on this datasheet, we will offer a refund or replacement. For full details of the Abpromise, please visit <https://www.abcam.co.jp/abpromise> or contact our technical team.

Terms and conditions

- Guarantee only valid for products bought direct from Abcam or one of our authorized distributors