

Anti-Ras antibody [EPR3255] ab108602

リコンビナント **RabMAb**

★★★★★ **9 Abreviews** **24 References** 画像数 10

製品の概要

製品名	Anti-Ras antibody [EPR3255]
製品の詳細	Rabbit monoclonal [EPR3255] to Ras
由来種	Rabbit
特異性	ab108602 also detects H-Ras and N-Ras.
アプリケーション	適用あり: IHC-P, Flow Cyt (Intra), WB, IP, ICC/IF
種交差性	交差種: Mouse, Rat, Human
免疫原	Synthetic peptide. This information is proprietary to Abcam and/or its suppliers.
ポジティブ・コントロール	WB: 293T and SH-SY5Y cell lysates; Rat brain lysates; Mouse heart lysates IP: SH-SY5Y cell lysates Flow Cyt (intra): HEK-293 cells ICC/IF: HEK-293T cells IHC-P: Human breast carcinoma, mouse cerebrum, rat cerebrum and rat cardiac muscle tissues.
特記事項	<p>This product is a recombinant monoclonal antibody, which offers several advantages including:</p> <ul style="list-style-type: none"> - High batch-to-batch consistency and reproducibility - Improved sensitivity and specificity - Long-term security of supply - Animal-free production <p>For more information see here.</p> <p>Our RabMAb[®] technology is a patented hybridoma-based technology for making rabbit monoclonal antibodies. For details on our patents, please refer to RabMAb[®] patents.</p>

製品の特性

製品の状態	Liquid
保存方法	Shipped at 4°C. Store at +4°C short term (1-2 weeks). Upon delivery aliquot. Store at -20°C long term. Avoid freeze / thaw cycle.
バッファー	<p>pH: 7.20</p> <p>Preservative: 0.01% Sodium azide</p> <p>Constituents: 59% PBS, 40% Glycerol, 0.05% BSA</p>
精製度	Protein A purified
ポリ/モノ	モノクローナル

クローン名	EPR3255
アイソタイプ	IgG

アプリケーション

The Abpromise guarantee Abpromise保証は、次のテスト済みアプリケーションにおけるab108602の使用に適用されます
アプリケーションノートには、推奨の開始希釈率がありますが、適切な希釈率につきましてはご確認ください。

アプリケーション	Abreviews	特記事項
IHC-P		Use at an assay dependent concentration. Perform heat mediated antigen retrieval with Tris/EDTA buffer pH 9.0 before commencing with IHC staining protocol.
Flow Cyt (Intra)		1/30.
WB	★★★★★ (6)	1/1000 - 1/10000. Predicted molecular weight: 22 kDa.
IP	★★★★★ (2)	1/10 - 1/100.
ICC/IF		1/50 - 1/100.

ターゲット情報

機能	Ras proteins bind GDP/GTP and possess intrinsic GTPase activity.
関連疾患	<p>Defects in HRAS are the cause of faciocutaneeoskeletal syndrome (FCSS) [MIM:218040]. A rare condition characterized by prenatally increased growth, postnatal growth deficiency, mental retardation, distinctive facial appearance, cardiovascular abnormalities (typically pulmonic stenosis, hypertrophic cardiomyopathy and/or atrial tachycardia), tumor predisposition, skin and musculoskeletal abnormalities.</p> <p>Defects in HRAS are the cause of congenital myopathy with excess of muscle spindles (CMEMS) [MIM:218040]. CMEMS is a variant of Costello syndrome.</p> <p>Defects in HRAS may be a cause of susceptibility to Hurthle cell thyroid carcinoma (HCTC) [MIM:607464]. Hurthle cell thyroid carcinoma accounts for approximately 3% of all thyroid cancers. Although they are classified as variants of follicular neoplasms, they are more often multifocal and somewhat more aggressive and are less likely to take up iodine than are other follicular neoplasms.</p> <p>Note=Mutations which change positions 12, 13 or 61 activate the potential of HRAS to transform cultured cells and are implicated in a variety of human tumors.</p> <p>Defects in HRAS are a cause of susceptibility to bladder cancer (BLC) [MIM:109800]. A malignancy originating in tissues of the urinary bladder. It often presents with multiple tumors appearing at different times and at different sites in the bladder. Most bladder cancers are transitional cell carcinomas. They begin in cells that normally make up the inner lining of the bladder. Other types of bladder cancer include squamous cell carcinoma (cancer that begins in thin, flat cells) and adenocarcinoma (cancer that begins in cells that make and release mucus and other fluids). Bladder cancer is a complex disorder with both genetic and environmental influences.</p> <p>Note=Defects in HRAS are the cause of oral squamous cell carcinoma (OSCC).</p>
配列類似性	Belongs to the small GTPase superfamily. Ras family.

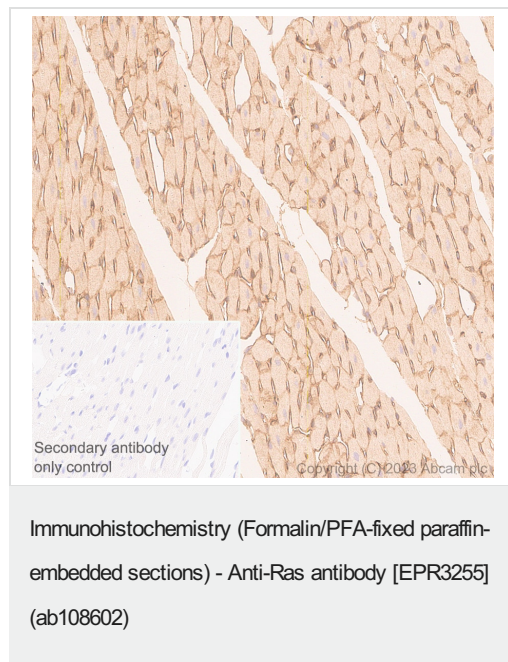
翻訳後修飾

Palmitoylated by the ZDHHC9-GOLGA7 complex. A continuous cycle of de- and re-palmitoylation regulates rapid exchange between plasma membrane and Golgi.
S-nitrosylated; critical for redox regulation. Important for stimulating guanine nucleotide exchange.
No structural perturbation on nitrosylation.

細胞内局在

Cell membrane. Golgi apparatus membrane. The active GTP-bound form is localized most strongly to membranes than the inactive GDP-bound form (By similarity). Shuttles between the plasma membrane and the Golgi apparatus.

画像

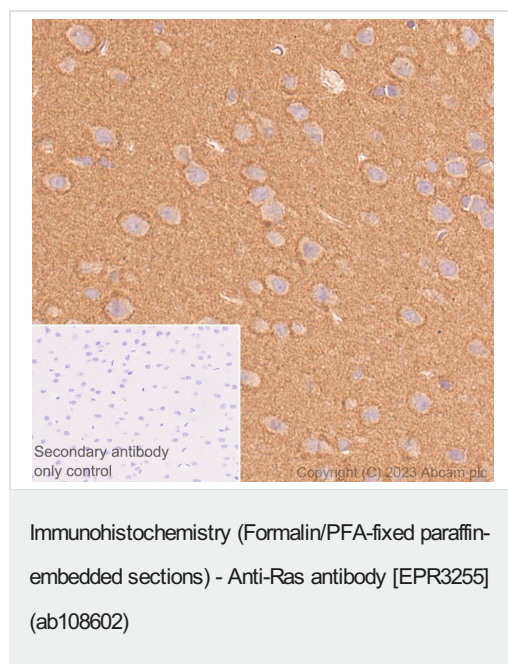


Immunohistochemical analysis of paraffin-embedded rat cardiac muscle tissue labelling Ras with **ab209974** at 1/10000 (0.104 µg/ml) dilution followed by a LeicaDS9800 (Bond™ Polymer Refine Detection) at ready to use dilution. Positive staining on rat cardiac muscle. The section was incubated with **ab209974** for 30 mins at room temperature. The immunostaining was performed on a Leica Biosystems BOND® RX instrument. Counterstained with Hematoxylin.

Secondary antibody only control: Secondary antibody is LeicaDS9800 (Bond™ Polymer Refine Detection) at ready to use dilution.

Heat mediated antigen retrieval was performed with Tris-EDTA buffer (pH 9.0, Epitope Retrieval Solution2) for 20 mins.

This data was developed using the same antibody clone in a different buffer formulation (**ab209974**).

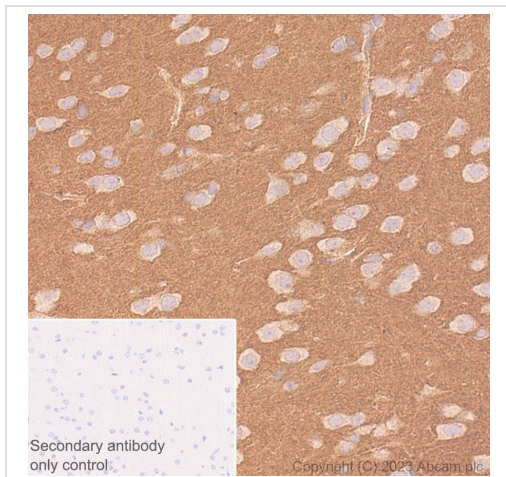


Immunohistochemical analysis of paraffin-embedded rat cerebrum tissue labelling Ras with **ab209974** at 1/10000 (0.104 µg/ml) dilution followed by a LeicaDS9800 (Bond™ Polymer Refine Detection) at ready to use dilution. Positive staining on rat cerebrum. The section was incubated with **ab209974** for 30 mins at room temperature. The immunostaining was performed on a Leica Biosystems BOND® RX instrument. Counterstained with hematoxylin.

Secondary antibody only control: Secondary antibody is LeicaDS9800 (Bond™ Polymer Refine Detection) at Ready to use dilution.

Heat mediated antigen retrieval was performed with Tris-EDTA buffer (pH 9.0, Epitope Retrieval Solution2) for 20 mins.

This data was developed using the same antibody clone in a different buffer formulation (**ab209974**).



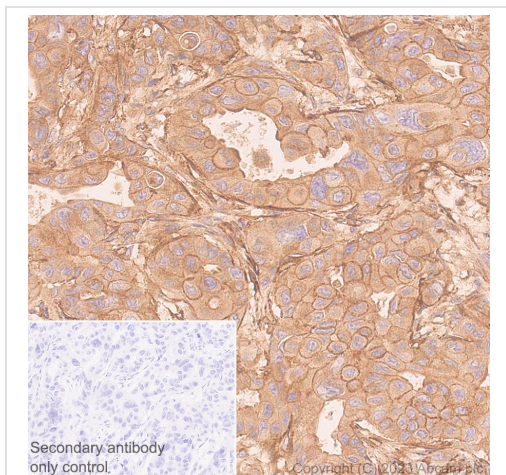
Immunohistochemistry (Formalin/PFA-fixed paraffin-embedded sections) - Anti-Ras antibody [EPR3255] (ab108602)

Immunohistochemical analysis of paraffin-embedded mouse cerebrum tissue labelling Ras with **ab209974** at 1/10000 (0.104 µg/ml) dilution followed by a LeicaDS9800 (Bond™ Polymer Refine Detection) at ready to use dilution. Positive staining on mouse cerebrum. The section was incubated with **ab209974** for 30 mins at room temperature. The immunostaining was performed on a Leica Biosystems BOND® RX instrument. Counterstained with hematoxylin.

Secondary antibody only control: Secondary antibody is LeicaDS9800 (Bond™ Polymer Refine Detection) at ready to use dilution.

Heat mediated antigen retrieval was performed with Tris-EDTA buffer (pH 9.0, Epitope Retrieval Solution2) for 20 mins.

This data was developed using the same antibody clone in a different buffer formulation (**ab209974**).



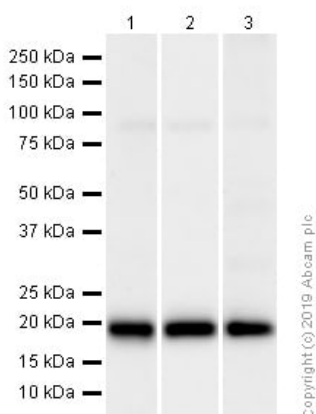
Immunohistochemistry (Formalin/PFA-fixed paraffin-embedded sections) - Anti-Ras antibody [EPR3255] (ab108602)

Immunohistochemical analysis of paraffin-embedded human breast carcinoma tissue labelling Ras with **ab209974** at 1/10000 (0.104 µg/ml) dilution followed by a LeicaDS9800 (Bond™ Polymer Refine Detection) at ready to use dilution. Positive staining on human breast carcinoma. The section was incubated with **ab209974** for 30 mins at room temperature. The immunostaining was performed on a Leica Biosystems BOND® RX instrument. Counterstained with hematoxylin.

Secondary antibody only control: Secondary antibody is LeicaDS9800 (Bond™ Polymer Refine Detection) at ready to use dilution.

Heat mediated antigen retrieval was performed with Tris-EDTA buffer (pH 9.0, Epitope Retrieval Solution2) for 20 mins.

This data was developed using the same antibody clone in a different buffer formulation (**ab209974**).



Western blot - Anti-Ras antibody [EPR3255]
(ab108602)

All lanes : Anti-Ras antibody [EPR3255] (ab108602) at 1/10000 dilution (Purified)

Lane 1 : HEK-293 (Human embryonic kidney epithelial cell) whole cell lysates

Lane 2 : Rat brain lysates

Lane 3 : Mouse heart lysates

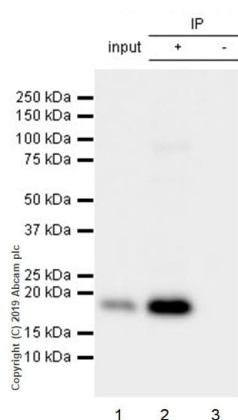
Lysates/proteins at 20 µg per lane.

Secondary

All lanes : Goat Anti-Rabbit IgG H&L (HRP) ([ab97051](#)) at 1/20000 dilution

Predicted band size: 22 kDa

Observed band size: 21 kDa



Immunoprecipitation - Anti-Ras antibody [EPR3255]
(ab108602)

ab108602 (purified) at 1/20 dilution (2 µg) immunoprecipitating Ras in SH-SY5Y whole cell lysate.

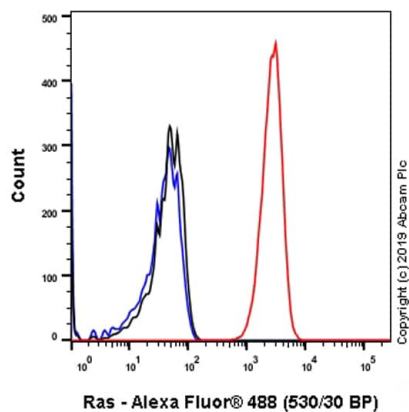
Lane 1 (input): SH-SY5Y (Human neuroblastoma epithelial cell) whole cell lysate 10 µg

Lane 2 (+): ab108602 & SH-SY5Y whole cell lysate

Lane 3 (-): Rabbit monoclonal IgG ([ab172730](#)) instead of ab108602 in SH-SY5Y whole cell lysate

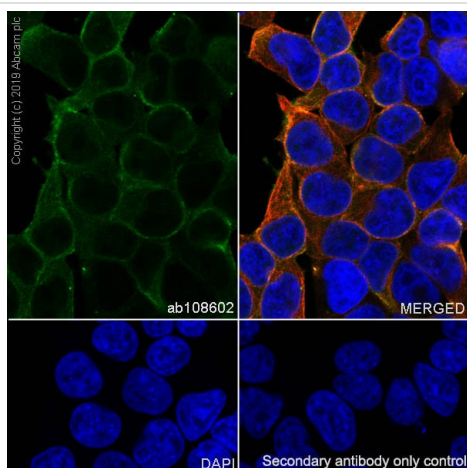
For western blotting, VeriBlot for IP Detection Reagent (HRP) ([ab131366](#)) was used at 1/1000 dilution.

Blocking and diluting buffer: 5% NFDM/TBST.



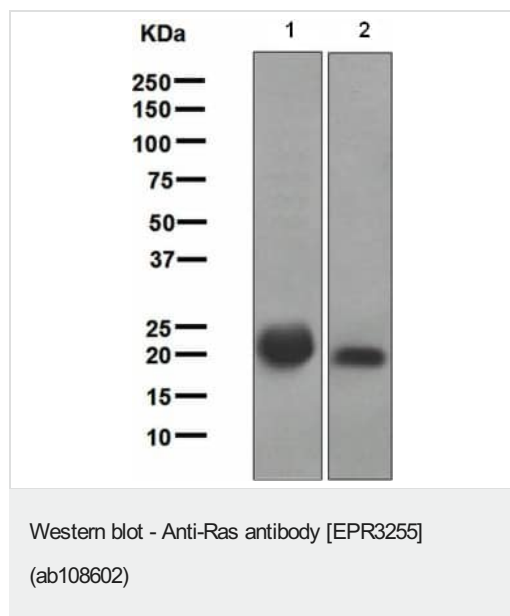
Intracellular Flow Cytometry analysis of HEK-293 (Human embryonic kidney epithelial cell) cells labeling Ras with purified ab108602 at 1/30 dilution (10 µg/ml) (Red). Cells were fixed with 4% Paraformaldehyde and permeabilised with 90% Methanol. A Goat anti rabbit IgG (Alexa Fluor® 488, **ab150077**) secondary antibody was used at 1/2000. Isotype control - Rabbit monoclonal IgG (Black). Unlabeled control - Cell without incubation with primary antibody and secondary antibody (Blue).

Flow Cytometry (Intracellular) - Anti-Ras antibody
[EPR3255] (ab108602)



Immunocytochemistry/ Immunofluorescence analysis of 293T (Human embryonic kidney epithelial cell) cells labeling Ras with purified ab108602 at 1:100 dilution (10 µg/ml). Cells were fixed in 4% Paraformaldehyde and permeabilized with 0.1% tritonX-100. Cells were counterstained with Ab195889 Anti-alpha Tubulin antibody [DM1A] - Microtubule Marker (Alexa Fluor® 594) 1:200 (2.5 µg/ml). Goat anti rabbit IgG (Alexa Fluor® 488, **ab150077**) was used as the secondary antibody at 1:1000 (2 µg/ml) dilution. DAPI (blue) was used as nuclear counterstain. PBS instead of the primary antibody was used as the secondary antibody only control.

Immunocytochemistry/ Immunofluorescence - Anti-Ras antibody [EPR3255] (ab108602)



All lanes : Anti-Ras antibody [EPR3255] (ab108602) at 1/1000 dilution (unpurified)

Lane 1 : HEK-293 whole cell lysate

Lane 2 : SH-SY5Y cell lysate

Lysates/proteins at 10 µg per lane.

Secondary

All lanes : HRP labelled goat anti-rabbit at 1/2000 dilution

Predicted band size: 22 kDa

Why choose a recombinant antibody?

<p>Research with confidence Consistent and reproducible results</p>	<p>Long-term and scalable supply Recombinant technology</p>
<p>Success from the first experiment Confirmed specificity</p>	<p>Ethical standards compliant Animal-free production</p>

Anti-Ras antibody [EPR3255] (ab108602)

Please note: All products are "FOR RESEARCH USE ONLY. NOT FOR USE IN DIAGNOSTIC PROCEDURES"

Our Abpromise to you: Quality guaranteed and expert technical support

- Replacement or refund for products not performing as stated on the datasheet
- Valid for 12 months from date of delivery
- Response to your inquiry within 24 hours
- We provide support in Chinese, English, French, German, Japanese and Spanish
- Extensive multi-media technical resources to help you
- We investigate all quality concerns to ensure our products perform to the highest standards

If the product does not perform as described on this datasheet, we will offer a refund or replacement. For full details of the Abpromise, please visit <https://www.abcam.co.jp/abpromise> or contact our technical team.

Terms and conditions

- Guarantee only valid for products bought direct from Abcam or one of our authorized distributors