

### Anti-RAPGEF5 antibody [EPR6882] ab129008

リコンビナント RabMAb

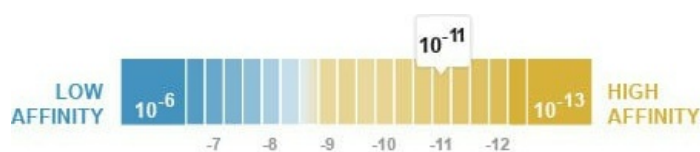
3 References 画像数 12

#### 製品の概要

製品名	Anti-RAPGEF5 antibody [EPR6882]
製品の詳細	Rabbit monoclonal [EPR6882] to RAPGEF5
由来種	Rabbit
アプリケーション	<b>適用あり:</b> Flow Cyt (Intra), WB, IHC-P, ICC/IF
種交差性	<b>交差種:</b> Mouse, Rat, Human
免疫原	Synthetic peptide within Human RAPGEF5 (N terminal). The exact sequence is proprietary.
ポジティブ・コントロール	WB: 293T, HeLa, and K562 cell lysates. Rat and mouse brain tissue lysates; IHC: Human testis & brain, rat cerebrum & mouse liver tissue; ICC/IF: HEK-293 and HeLa cells; Flow Cyt (intra): HeLa cells.
特記事項	<p>This product is a recombinant monoclonal antibody, which offers several advantages including:</p> <ul style="list-style-type: none"> <li>- High batch-to-batch consistency and reproducibility</li> <li>- Improved sensitivity and specificity</li> <li>- Long-term security of supply</li> <li>- Animal-free production</li> </ul> <p>For more information <a href="#">see here</a>.</p> <p>Our RabMAb<sup>®</sup> technology is a patented hybridoma-based technology for making rabbit monoclonal antibodies. For details on our patents, please refer to <a href="#">RabMAb<sup>®</sup> patents</a>.</p>

#### 製品の特性

製品の状態	Liquid
保存方法	Shipped at 4°C. Store at +4°C short term (1-2 weeks). Upon delivery aliquot. Store at -20°C. Avoid freeze / thaw cycle.
解離定数 (K <sub>D</sub> 値)	K <sub>D</sub> = 1.00 x 10 <sup>-11</sup> M



[Learn more about K<sub>D</sub>](#)

バッファー	pH: 7.20
-------	----------

	Preservative: 0.01% Sodium azide
	Constituents: 59% PBS, 40% Glycerol (glycerin, glycerine), 0.05% BSA
精製度	Protein A purified
ポリ/モノ	モノクローナル
クローン名	EPR6882
アイソタイプ	IgG

## アプリケーション

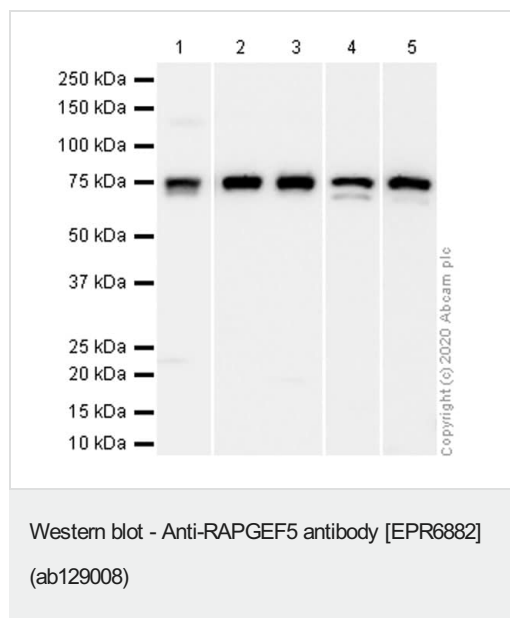
**The Abpromise guarantee**      **Abpromise保証は、** 次のテスト済みアプリケーションにおけるab129008の使用に適用されます  
アプリケーションノートには、推奨の開始希釈率がありますが、適切な希釈率につきましてはご検討ください。

アプリケーション	Abreviews	特記事項
Flow Cyt (Intra)		1/10 - 1/100. <b>ab172730</b> - Rabbit monoclonal IgG, is suitable for use as an isotype control with this antibody.
WB		1/1000 - 1/10000. Detects a band of approximately 68 kDa (predicted molecular weight: 68 kDa).
IHC-P		1/250 - 1/500. Perform heat mediated antigen retrieval with citrate buffer pH 6 before commencing with IHC staining protocol. See <u><b>IHC antigen retrieval protocols</b></u> .
ICC/IF		1/100 - 1/250.

## ターゲット情報

機能	Guanine nucleotide exchange factor (GEF) for RAP1A, RAP2A and MRAS/M-Ras-GTP. Its association with MRAS inhibits Rap1 activation.
組織特異性	Widely expressed with highest levels in brain.
配列類似性	Contains 1 N-terminal Ras-GEF domain. Contains 1 Ras-GEF domain.
細胞内局在	Nucleus.

## 画像



**All lanes :** Anti-RAPGEF5 antibody [EPR6882] (ab129008) at 1/1000 dilution (Purified)

**Lane 1 :** 293T (Human embryonic kidney epithelial cell) whole cell lysate

**Lane 2 :** K-562 (Human chronic myelogenous leukemia lymphoblast) whole cell lysate

**Lane 3 :** HeLa (Human cervix adenocarcinoma epithelial cel) whole cell lysate

**Lane 4 :** Mouse brain lysate

**Lane 5 :** Rat brain lysate

Lysates/proteins at 20 µg per lane.

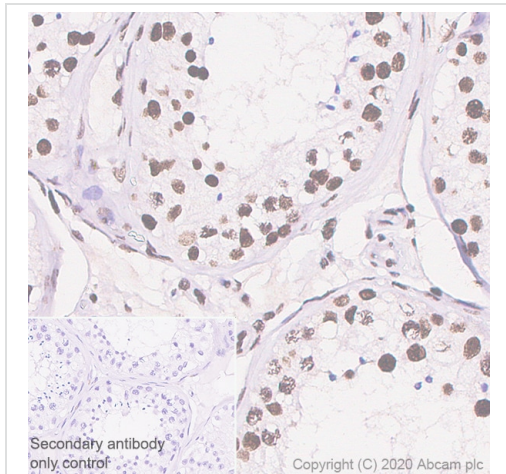
### Secondary

**All lanes :** Goat Anti-Rabbit IgG (HRP) with minimal cross-reactivity with human IgG at 1/2000 dilution

**Predicted band size:** 68 kDa

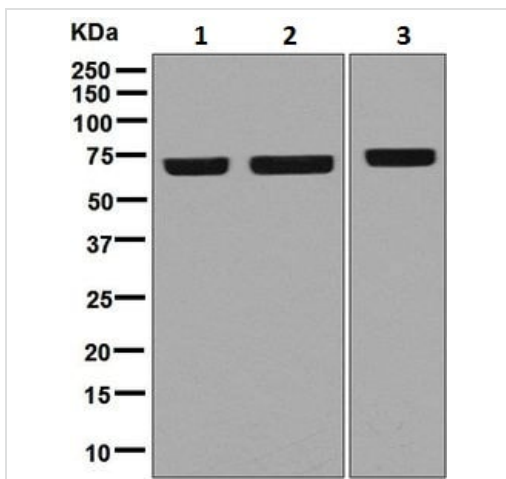
**Observed band size:** 68 kDa

**Blocking/Diluting buffer:** 5% NFDM/TBST



Immunohistochemistry (Formalin/PFA-fixed paraffin-embedded sections) - Anti-RAPGEF5 antibody [EPR6882] (ab129008)

Immunohistochemistry (Formalin/PFA-fixed paraffin-embedded sections) analysis of human testis tissue sections labeling RAPGEF5 with purified ab129008 at 1/100 dilution (1.19 µg/mL). Heat mediated antigen retrieval was performed using Bond™ Epitope Retrieval Solution 1 (pH 6.0). Rabbit specific IHC polymer detection kit HRP/DAB (**ab209101**) was used as the secondary antibody. Negative control: PBS instead of the primary antibody. Hematoxylin was used as a counterstain. The immunostaining was performed on a Leica Biosystems BOND® RX instrument.



Western blot - Anti-RAPGEF5 antibody [EPR6882] (ab129008)

**All lanes :** Anti-RAPGEF5 antibody [EPR6882] (ab129008) at 1/1000 dilution (unpurified)

**Lane 1 :** 293T cell lysate

**Lane 2 :** HeLa cell lysate

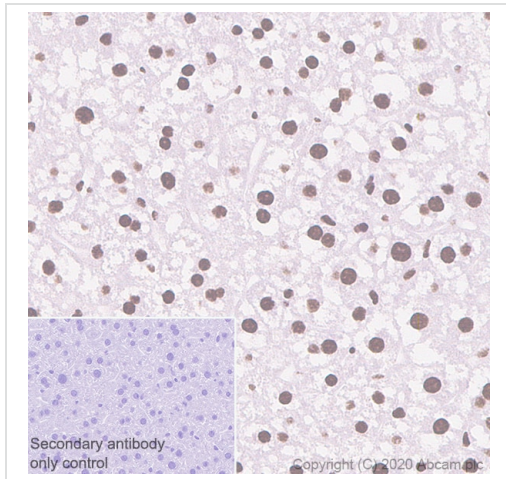
**Lane 3 :** K562 cell lysate

Lysates/proteins at 10 µg per lane.

#### Secondary

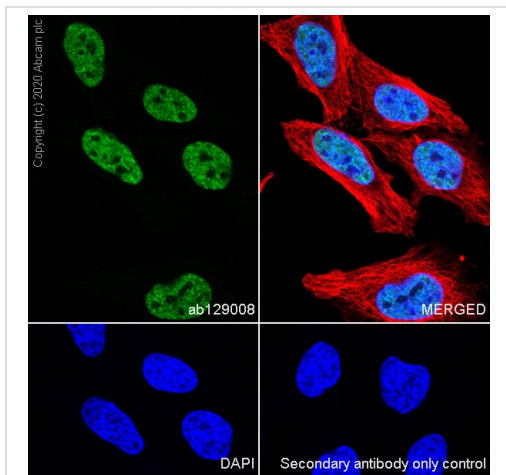
**All lanes :** HRP labelled Goat anti-Rabbit IgG at 1/2000 dilution

**Predicted band size:** 68 kDa



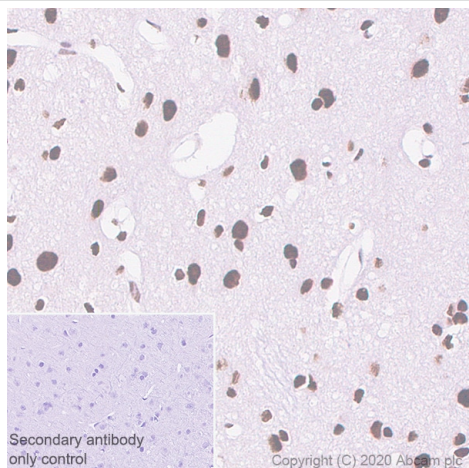
Immunohistochemistry (Formalin/PFA-fixed paraffin-embedded sections) - Anti-RAPGEF5 antibody [EPR6882] (ab129008)

Immunohistochemistry (Formalin/PFA-fixed paraffin-embedded sections) analysis of mouse liver tissue sections labeling RAPGEF5 with purified ab129008 at 1/100 dilution (1.19 µg/mL). Heat mediated antigen retrieval was performed using Bond™ Epitope Retrieval Solution 1 (pH 6.0). Rabbit specific IHC polymer detection kit HRP/DAB (**ab209101**) was used as the secondary antibody. Negative control: PBS instead of the primary antibody. Hematoxylin was used as a counterstain. The immunostaining was performed on a Leica Biosystems BOND® RX instrument.



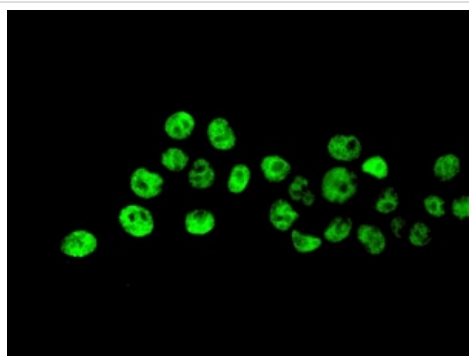
Immunocytochemistry/ Immunofluorescence - Anti-RAPGEF5 antibody [EPR6882] (ab129008)

Immunocytochemistry/Immunofluorescence analysis of HeLa (Human cervix adenocarcinoma epithelial cell) cells labeling RAPGEF5 with Purified ab129008 at 1:500 dilution (0.24 µg/ml). Cells were fixed in 4% Paraformaldehyde and permeabilized with 0.1% tritonX-100. Cells were counterstained with Ab195889 Anti-alpha Tubulin antibody [DM1A] - Microtubule Marker (Alexa Fluor® 594) 1:200 (2.5 µg/ml). Goat anti rabbit IgG (Alexa Fluor® 488, **ab150077**) was used as the secondary antibody at 1:1000 (2 µg/ml) dilution. DAPI (blue) was used as nuclear counterstain. PBS instead of the primary antibody was used as the secondary antibody only control.



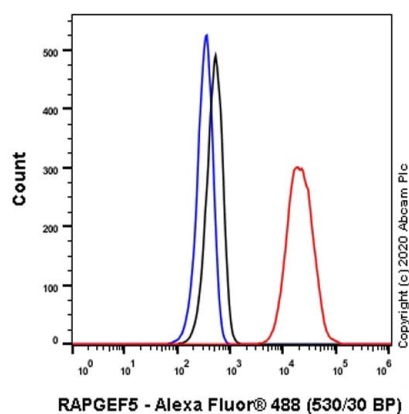
Immunohistochemistry (Formalin/PFA-fixed paraffin-embedded sections) - Anti-RAPGEF5 antibody [EPR6882] (ab129008)

Immunohistochemistry (Formalin/PFA-fixed paraffin-embedded sections) analysis of rat cerebrum tissue sections labeling RAPGEF5 with purified ab129008 at 1/100 dilution (1.19 µg/mL). Heat mediated antigen retrieval was performed using Bond™ Epitope Retrieval Solution 1 (pH 6.0). Rabbit specific IHC polymer detection kit HRP/DAB (**ab209101**) was used as the secondary antibody. Negative control: PBS instead of the primary antibody. Hematoxylin was used as a counterstain. The immunostaining was performed on a Leica Biosystems BOND® RX instrument.



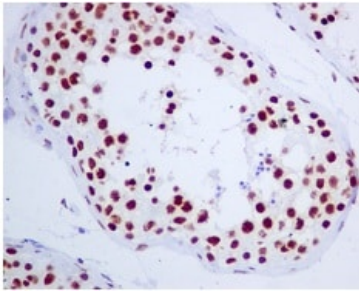
Immunocytochemistry/ Immunofluorescence - Anti-RAPGEF5 antibody [EPR6882] (ab129008)

ab129008, unpurified, at 1/100 dilution, staining RAPGEF5 in HEK-293 cells by Immunofluorescence



Flow Cytometry (Intracellular) - Anti-RAPGEF5 antibody [EPR6882] (ab129008)

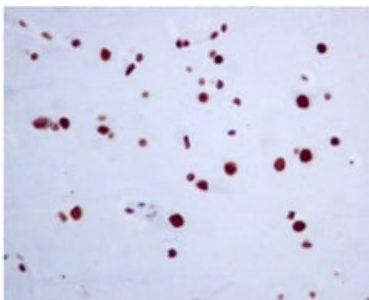
Intracellular Flow Cytometry analysis of HeLa (Human cervix adenocarcinoma epithelial cell) cells, labeling RAPGEF5 with Purified ab129008 at 1/20 dilution (10 µg/ml) (Red). Cells were fixed with 4% Paraformaldehyde and permeabilised with 90% Methanol. A Goat anti rabbit IgG (Alexa Fluor® 488, **ab150077**) secondary antibody was used at 1/2000. Isotype control - Rabbit monoclonal IgG (Black). Unlabeled control - Cell without incubation with primary antibody and secondary antibody (Blue).



Immunohistochemistry (Formalin/PFA-fixed paraffin-embedded sections) - Anti-RAPGEF5 antibody [EPR6882] (ab129008)

ab129008, unpurified, at 1/250 dilution, staining RAPGEF5 in paraffin embedded Human testis tissue by Immunohistochemistry.

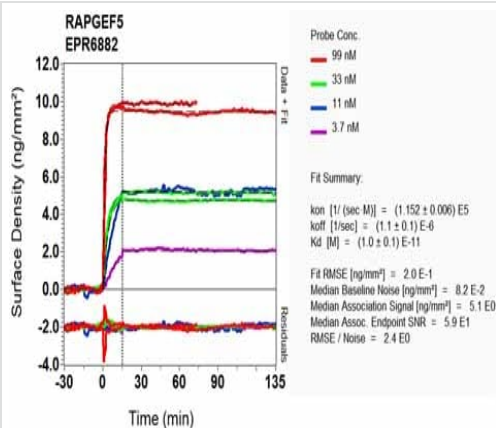
Perform heat mediated antigen retrieval with citrate buffer pH 6 before commencing with IHC staining protocol.



Immunohistochemistry (Formalin/PFA-fixed paraffin-embedded sections) - Anti-RAPGEF5 antibody [EPR6882] (ab129008)

ab129008, unpurified, at 1/250 dilution, staining RAPGEF5 in paraffin embedded Human brain tissue by Immunohistochemistry.

Perform heat mediated antigen retrieval with citrate buffer pH 6 before commencing with IHC staining protocol.



SPR Scanning - Anti-RAPGEF5 antibody [EPR6882] (ab129008)





Equilibrium dissociation constant ( $K_D$ )

Learn more about  $K_D$

[Click here to learn more about  \$K\_D\$](#)



Why choose a recombinant antibody?

 <p><b>Research with confidence</b> Consistent and reproducible results</p>	 <p><b>Long-term and scalable supply</b> Recombinant technology</p>
 <p><b>Success from the first experiment</b> Confirmed specificity</p>	 <p><b>Ethical standards compliant</b> Animal-free production</p>

Anti-RAPGEF5 antibody [EPR6882] (ab129008)

**Please note:** All products are "FOR RESEARCH USE ONLY. NOT FOR USE IN DIAGNOSTIC PROCEDURES"

### Our Abpromise to you: Quality guaranteed and expert technical support

- Replacement or refund for products not performing as stated on the datasheet
- Valid for 12 months from date of delivery
- Response to your inquiry within 24 hours
- We provide support in Chinese, English, French, German, Japanese and Spanish
- Extensive multi-media technical resources to help you
- We investigate all quality concerns to ensure our products perform to the highest standards

If the product does not perform as described on this datasheet, we will offer a refund or replacement. For full details of the Abpromise, please visit <https://www.abcam.co.jp/abpromise> or contact our technical team.

### Terms and conditions

- Guarantee only valid for products bought direct from Abcam or one of our authorized distributors