

Anti-RanBP2 antibody ab64276

KO 評価済

★★★★★ [4 Abreviews](#) [29 References](#) [画像数 5](#)

製品の概要

製品名	Anti-RanBP2 antibody
製品の詳細	Rabbit polyclonal to RanBP2
由来種	Rabbit
アプリケーション	適用あり: WB, ICC/IF, IP
種交差性	交差種: Human 交差が予測される動物種: Cow 
免疫原	Synthetic peptide (human) corresponding to 3 times repeated sequence in RanBP2 protein: SKAPKSGFEGMFTKKE , amino acids 1592-1607. Run BLAST with Run BLAST with
ポジティブ・コントロール	WB: Wild-type HeLa, HeLa and Caco2 whole cell lysates. ICC: HeLa cells.
特記事項	The Life Science industry has been in the grips of a reproducibility crisis for a number of years. Abcam is leading the way in addressing this with our range of recombinant monoclonal antibodies and knockout edited cell lines for gold-standard validation. Please check that this product meets your needs before purchasing. If you have any questions, special requirements or concerns, please send us an inquiry and/or contact our Support team ahead of purchase. Recommended alternatives for this product can be found below, along with publications, customer reviews and Q&As

製品の特性

製品の状態	Liquid
保存方法	Shipped at 4°C. Store at +4°C short term (1-2 weeks). Store at -20°C or -80°C. Avoid freeze / thaw cycle.
バッファー	pH: 6 Preservative: 0.09% Sodium azide Constituent: Whole serum
精製度	Whole antiserum
ポリ/モノ	ポリクローナル

アプリケーション

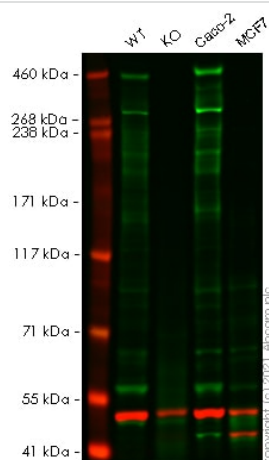
The Abpromise guarantee **Abpromise保証は、次のテスト済みアプリケーションにおけるab64276の使用に適用されず**
アプリケーションノートには、推奨の開始希釈率がありますが、適切な希釈率につきましてはご検討ください。

アプリケーション	Abreviews	特記事項
WB	★★★★☆ (1)	1/1000. Detects a band of approximately 358 kDa (predicted molecular weight: 358 kDa).
ICC/IF	★★★★★ (3)	1/2000.
IP		Use at an assay dependent concentration.

ターゲット情報

機能	E3 SUMO-protein ligase which facilitates SUMO1 and SUMO2 conjugation by UBE2I. Involved in transport factor (Ran-GTP, karyopherin)-mediated protein import via the F-G repeat-containing domain which acts as a docking site for substrates. Could also have isomerase or chaperone activity and may bind RNA or DNA. Component of the nuclear export pathway. Specific docking site for the nuclear export factor exportin-1.
パスウェイ	Protein modification; protein sumoylation.
関連疾患	Defects in RANBP2 are the cause of susceptibility to encephalopathy acute necrotizing type 1 (ANE1) [MIM:608033]. A rapidly progressive encephalopathy manifesting in susceptible individuals with seizures and coma. It can occur within days in otherwise healthy children after common viral infections such as influenza and parainfluenza, without evidence of viral infection of the brain or inflammatory cell infiltration. Brain T2-weighted magnetic resonance imaging reveals characteristic symmetric lesions present in the thalami, pons and brainstem.
配列類似性	Contains 1 PPlase cyclophilin-type domain. Contains 4 RanBD1 domains. Contains 8 RanBP2-type zinc fingers. Contains 1 TPR repeat.
ドメイン	Contains F-X-F-G repeats.
翻訳後修飾	Polyubiquitinated by PARK2, which leads to proteasomal degradation.
細胞内局在	Nucleus > nuclear pore complex. Cytoplasmic filaments.

画像



Western blot - Anti-RanBP2 antibody (ab64276)

All lanes : Anti-RanBP2 antibody (ab64276) at 1/1000 dilution

Lane 1 : Wild-type HeLa cell lysate

Lane 2 : RANBP2 knockout HeLa cell lysate

Lane 3 : Caco2 cell lysate

Lane 4 : MCF7 cell lysate

Lysates/proteins at 20 µg per lane.

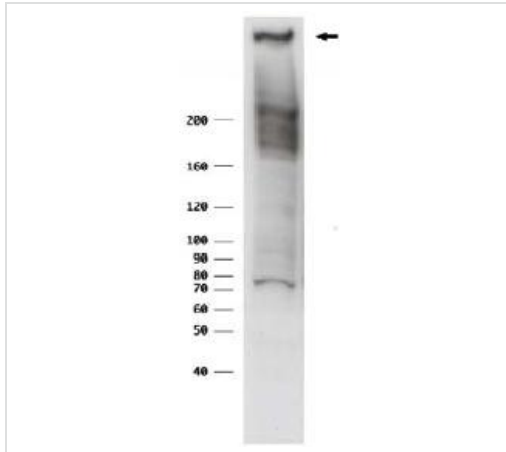
Performed under reducing conditions.

Predicted band size: 358 kDa

Observed band size: 450 kDa

Lanes 1 - 4: Merged signal (red and green). Green - ab64276 observed at 450 kDa. Red - loading control **ab7291** (Mouse anti-Alpha Tubulin [DM1A]) observed at 55 kDa.

ab64276 was shown to react with RanBP2 in wild-type HeLa cells in Western blot with loss of signal observed in RANBP2 knockout cell line **ab265618** (RANBP2 knockout cell lysate **ab257627**). Wild-type HeLa and RANBP2 knockout cell lysates were subjected to SDS-PAGE. Membranes were blocked in 3 % milk in TBS-T (0.1 % Tween[®]) before incubation with ab64276 and **ab7291** (Mouse anti-Alpha Tubulin [DM1A]) overnight at 4 °C at a 1:1000 dilution and 1:20000 dilution respectively. Blots were incubated with Goat anti-Rabbit IgG H&L (IRDye[®] 800CW) preabsorbed (**ab216773**) and Goat anti-Mouse IgG H&L (IRDye[®] 680RD) preabsorbed (**ab216776**) secondary antibodies at 1:20000 dilution for 1 h at room temperature before imaging.

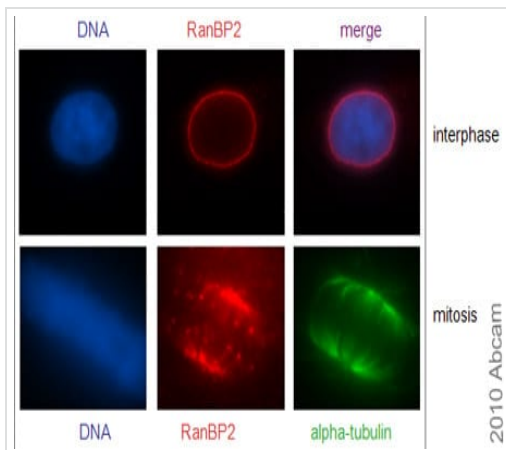


Western blot - Anti-RanBP2 antibody (ab64276)

Anti-RanBP2 antibody (ab64276) at 1/1000 dilution + HeLa total cell lysate

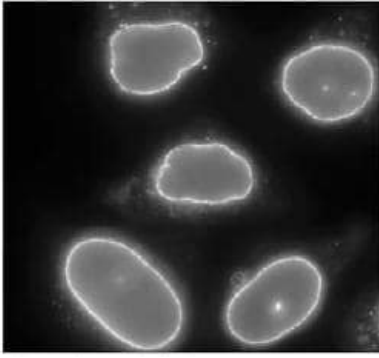
Predicted band size: 358 kDa

Observed band size: 358 kDa



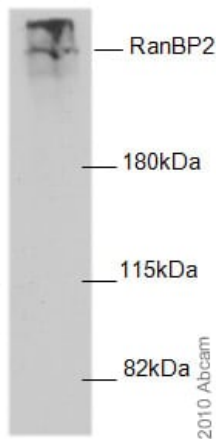
Immunocytochemistry/ Immunofluorescence - Anti-RanBP2 antibody (ab64276)

ab64276 (1:2000) staining RanBP2 in HeLa cells pre-extracted in 0.005% digitonin and fixed in 3.7% PFA/30 mM sucrose/PBS for 15 min (room temperature). *Image kindly provided by Patrizia Lavia, Univ. "La Sapienza", CNR, Italy.*



Immunofluorescent staining of paraformaldehyde fixed HeLa cells by ab64276 (1:2000).

Immunocytochemistry/ Immunofluorescence - Anti-RanBP2 antibody (ab64276)



Anti-RanBP2 antibody (ab64276) at 1/2000 dilution + HeLa whole cell lysate

Predicted band size: 358 kDa

Exposure time: 1 minute

WB performed on a 6%SDS-PAGE gel.

Image Kindly provided by Patrizia Lavia, University "La Sapienza", CNR, Italy.

Western blot - Anti-RanBP2 antibody (ab64276)

Please note: All products are "FOR RESEARCH USE ONLY. NOT FOR USE IN DIAGNOSTIC PROCEDURES"

Our Abpromise to you: Quality guaranteed and expert technical support

- Replacement or refund for products not performing as stated on the datasheet
- Valid for 12 months from date of delivery
- Response to your inquiry within 24 hours
- We provide support in Chinese, English, French, German, Japanese and Spanish
- Extensive multi-media technical resources to help you
- We investigate all quality concerns to ensure our products perform to the highest standards

If the product does not perform as described on this datasheet, we will offer a refund or replacement. For full details of the Abpromise, please visit <https://www.abcam.co.jp/abpromise> or contact our technical team.

Terms and conditions

- Guarantee only valid for products bought direct from Abcam or one of our authorized distributors