

Anti-RALY antibody [EPR10121] ab170105

リコンビナント RabMAb

4 References [画像数 5](#)

製品の概要

製品名	Anti-RALY antibody [EPR10121]
製品の詳細	Rabbit monoclonal [EPR10121] to RALY
由来種	Rabbit
アプリケーション	適用あり: WB, IHC-P, ICC/IF 適用なし: Flow Cyt
種交差性	交差種: Human 交差が予測される動物種: Mouse, Rat 
免疫原	Synthetic peptide. This information is proprietary to Abcam and/or its suppliers.
ポジティブ・コントロール	Recombinant Human RALY protein (ab161475) can be used as a positive control in WB. HeLa, HepG2, Jurkat and A549 lysates; Human brain and heart tissues; HepG2 cells.
特記事項	This product is a recombinant monoclonal antibody, which offers several advantages including: <ul style="list-style-type: none">- High batch-to-batch consistency and reproducibility- Improved sensitivity and specificity- Long-term security of supply- Animal-free production For more information see here . Our RabMAb [®] technology is a patented hybridoma-based technology for making rabbit monoclonal antibodies. For details on our patents, please refer to RabMAb[®] patents .

製品の特性

製品の状態	Liquid
保存方法	Shipped at 4°C. Store at +4°C short term (1-2 weeks). Upon delivery aliquot. Store at -20°C long term.
バッファー	pH: 7.2 Preservative: 0.01% Sodium azide Constituents: 9% PBS, 40% Glycerol (glycerin, glycerine), 0.05% BSA, 50% Tissue culture supernatant
精製度	Tissue culture supernatant
ポリ/モノ	モノクローナル

クローン名 EPR10121

アイソタイプ IgG

アプリケーション

The Abpromise guarantee **Abpromise保証は、次のテスト済みアプリケーションにおけるab170105の使用に適用されず**
アプリケーションノートには、推奨の開始希釈率がありますが、適切な希釈率につきましてはご検討ください。

アプリケーション	Abreviews	特記事項
WB		1/1000 - 1/5000. Predicted molecular weight: 32 kDa.
IHC-P		1/100 - 1/250. Perform heat mediated antigen retrieval before commencing with IHC staining protocol. Use of an HRP/AP polymerized secondary antibody recommended.
ICC/IF		1/250 - 1/500.

追加情報 Is unsuitable for Flow Cyt.

ターゲット情報

機能 Probable-RNA binding protein. Could be a heterogeneous nuclear ribonucleoprotein (hnRNP).
May be involved in pre-mRNA splicing.

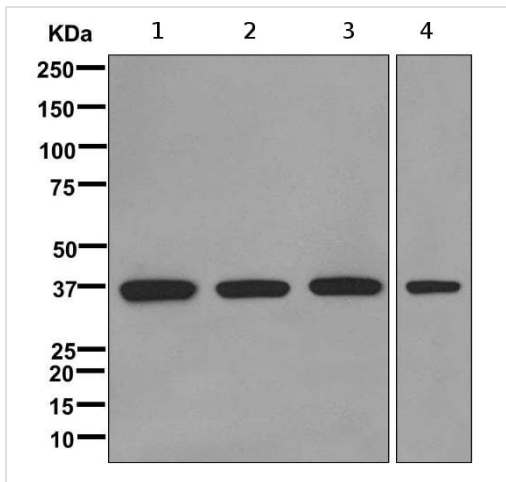
組織特異性 Expressed in heart, brain, lung, liver, skeletal muscle, kidney and pancreas. Weakly expressed in
placenta.

配列類似性 Belongs to the RRM HNRPC family. RALY subfamily.
Contains 1 RRM (RNA recognition motif) domain.

翻訳後修飾 Phosphorylated upon DNA damage, probably by ATM or ATR.

細胞内局在 Nucleus.

画像



Western blot - Anti-RALY antibody [EPR10121] (ab170105)

All lanes : Anti-RALY antibody [EPR10121] (ab170105) at 1/1000 dilution

Lane 1 : HeLa cell lysate

Lane 2 : HepG2 cell lysate

Lane 3 : Jurkat cell lysate

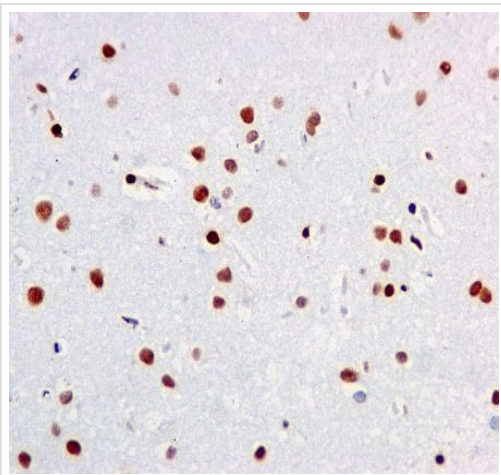
Lane 4 : A549 cell lysate

Lysates/proteins at 10 µg per lane.

Secondary

All lanes : Goat anti-rabbit HRP at 1/2000 dilution

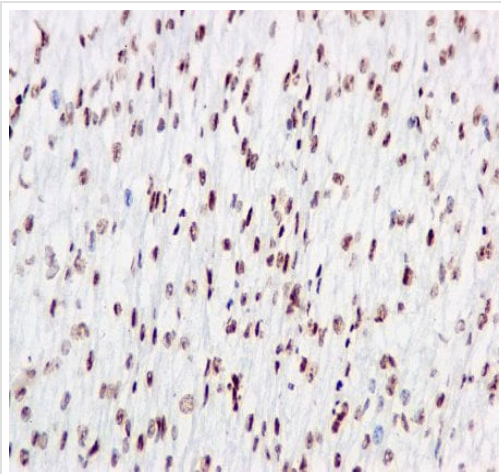
Predicted band size: 32 kDa



Immunohistochemistry (Formalin/PFA-fixed paraffin-embedded sections) - Anti-RALY antibody [EPR10121] (ab170105)

Immunohistochemical analysis of paraffin embedded Human brain tissue labeling RALY with ab170105 at a 1/100 dilution.

Perform heat mediated antigen retrieval before commencing with IHC staining protocol.



Immunohistochemistry (Formalin/PFA-fixed paraffin-embedded sections) - Anti-RALY antibody [EPR10121] (ab170105)

Immunohistochemical analysis of paraffin embedded Human heart tissue labeling RALY with ab170105 at a 1/100 dilution.

Perform heat mediated antigen retrieval before commencing with IHC staining protocol.



Immunocytochemistry/ Immunofluorescence - Anti-RALY antibody [EPR10121] (ab170105)

Immunofluorescence analysis of HepG2 cells labeling RALY with ab170105 at a 1/250 dilution.

Why choose a recombinant antibody?



Research with confidence
Consistent and reproducible results



Long-term and scalable supply
Recombinant technology



Success from the first experiment
Confirmed specificity



Ethical standards compliant
Animal-free production

Anti-RALY antibody [EPR10121] (ab170105)

Please note: All products are "FOR RESEARCH USE ONLY. NOT FOR USE IN DIAGNOSTIC PROCEDURES"

Our Abpromise to you: Quality guaranteed and expert technical support

- Replacement or refund for products not performing as stated on the datasheet
- Valid for 12 months from date of delivery
- Response to your inquiry within 24 hours

- We provide support in Chinese, English, French, German, Japanese and Spanish
- Extensive multi-media technical resources to help you
- We investigate all quality concerns to ensure our products perform to the highest standards

If the product does not perform as described on this datasheet, we will offer a refund or replacement. For full details of the Abpromise, please visit <https://www.abcam.co.jp/abpromise> or contact our technical team.

Terms and conditions

- Guarantee only valid for products bought direct from Abcam or one of our authorized distributors