

# Anti-Raf1 (phospho S259) antibody [EPR3433(2)] ab173539

リコンビナント RabMAb

**13 References** [画像数 7](#)

### 製品の概要

製品名	Anti-Raf1 (phospho S259) antibody [EPR3433(2)]
製品の詳細	Rabbit monoclonal [EPR3433(2)] to Raf1 (phospho S259)
由来種	Rabbit
アプリケーション	<b>適用あり:</b> WB, Dot blot <b>適用なし:</b> Flow Cyt, ICC/IF or IP
種交差性	<b>交差種:</b> Mouse, Rat, Human
免疫原	Synthetic peptide. This information is proprietary to Abcam and/or its suppliers.
ポジティブ・コントロール	WB: Treated C6, NIH/3T3 and HEK-293 whole cell lysates.
特記事項	This product is a recombinant monoclonal antibody, which offers several advantages including: <ul style="list-style-type: none"><li>- High batch-to-batch consistency and reproducibility</li><li>- Improved sensitivity and specificity</li><li>- Long-term security of supply</li><li>- Animal-free production</li></ul> For more information <a href="#">see here</a> . Our RabMAb <sup>®</sup> technology is a patented hybridoma-based technology for making rabbit monoclonal antibodies. For details on our patents, please refer to <a href="#">RabMAb<sup>®</sup> patents</a> .

### 製品の特性

製品の状態	Liquid
保存方法	Shipped at 4°C. Store at +4°C short term (1-2 weeks). Upon delivery aliquot. Store at -20°C long term. Avoid freeze / thaw cycle.
バッファー	Preservative: 0.01% Sodium azide Constituents: 59% PBS, 40% Glycerol (glycerin, glycerine), 0.05% BSA
精製度	Protein A purified
ポリ/モノ	モノクローナル
クローン名	EPR3433(2)
アイソタイプ	IgG

## アプリケーション

The Abpromise guarantee **Abpromise保証は、次のテスト済みアプリケーションにおけるab173539の使用に適用されます**  
アプリケーションノートには、推奨の開始希釈率がありますが、適切な希釈率につきましてはご検討ください。

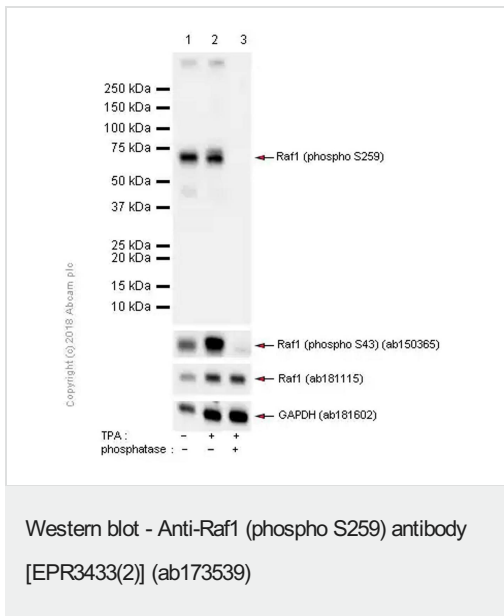
アプリケーション	Abreviews	特記事項
WB		1/1000 - 1/5000. Predicted molecular weight: 73 kDa.
Dot blot		Use at an assay dependent concentration.

追加情報 Is unsuitable for Flow Cyt, ICC/IF or IP.

## ターゲット情報

機能	Involved in the transduction of mitogenic signals from the cell membrane to the nucleus. Part of the Ras-dependent signaling pathway from receptors to the nucleus. Protects cells from apoptosis mediated by STK3.
組織特異性	In skeletal muscle, isoform 1 is more abundant than isoform 2.
関連疾患	Defects in RAF1 are the cause of Noonan syndrome type 5 (NS5) [MIM:611553]. Noonan syndrome (NS) is a disorder characterized by dysmorphic facial features, short stature, hypertelorism, cardiac anomalies, deafness, motor delay, and a bleeding diathesis. It is a genetically heterogeneous and relatively common syndrome, with an estimated incidence of 1 in 1000-2500 live births. Defects in RAF1 are the cause of LEOPARD syndrome type 2 (LEOPARD2) [MIM:611554]. LEOPARD syndrome is an autosomal dominant disorder allelic with Noonan syndrome. The acronym LEOPARD stands for lentigines, electrocardiographic conduction abnormalities, ocular hypertelorism, pulmonic stenosis, abnormalities of genitalia, retardation of growth, and deafness.
配列類似性	Belongs to the protein kinase superfamily. TKL Ser/Thr protein kinase family. RAF subfamily. Contains 1 phorbol-ester/DAG-type zinc finger. Contains 1 protein kinase domain. Contains 1 RBD (Ras-binding) domain.
翻訳後修飾	Phosphorylated upon DNA damage, probably by ATM or ATR. Phosphorylation at Thr-269 increases its kinase activity. Phosphorylation at Ser-259 induces the interaction with YWHAZ and inactivates kinase activity. Dephosphorylation of Ser-259 by the complex containing protein phosphatase 1, SHOC2 and M-Ras/MRAS relieves inactivation, leading to stimulate RAF1 activity.
細胞内局在	Cytoplasm. Cell membrane. Colocalizes with RGS14 and BRAF in both the cytoplasm and membranes.

## 画像



**All lanes** : Anti-Raf1 (phospho S259) antibody [EPR3433(2)] (ab173539) at 1/5000 dilution (Purified)

**Lane 1** : HEK-293 (Human embryonic kidney epithelial cell) whole cell lysates

**Lane 2** : HEK-293 (Human embryonic kidney epithelial cell) treated with 100nM Phorbol-12-myristate-13-acetate for 1 hour whole cell lysates

**Lane 3** : HEK-293 (Human embryonic kidney epithelial cell) treated with 100nM Phorbol-12-myristate-13-acetate for 1 hour whole cell lysates, then incubated with phosphatase

Lysates/proteins at 15 µg per lane.

### Secondary

**All lanes** : Goat Anti-Rabbit IgG H&L (HRP) (**ab97051**) at 1/20000 dilution

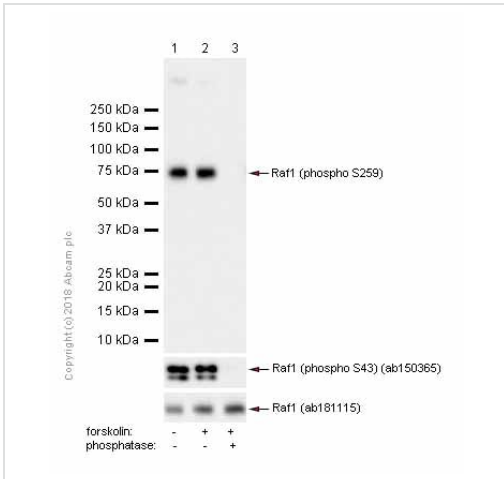
**Predicted band size:** 73 kDa

**Observed band size:** 73 kDa

**ab181602** was used as GAPDH loading control.

**ab181115** was used to detect Raf1.

**ab150365** was used to detect Raf1 phospho S43.



Western blot - Anti-Raf1 (phospho S259) antibody [EPR3433(2)] (ab173539)

**All lanes** : Anti-Raf1 (phospho S259) antibody [EPR3433(2)] (ab173539) at 1/1000 dilution (Purified)

**Lane 1** : NIH/3T3 (Mouse embryonic fibroblast) whole cell lysates

**Lane 2** : NIH/3T3 (Mouse embryonic fibroblast) treated with 5uM forskolin for 10 minutes whole cell lysates

**Lane 3** : NIH/3T3 (Mouse embryonic fibroblast) treated with 5uM forskolin for 10 minutes whole cell lysates, then incubated with phosphatase

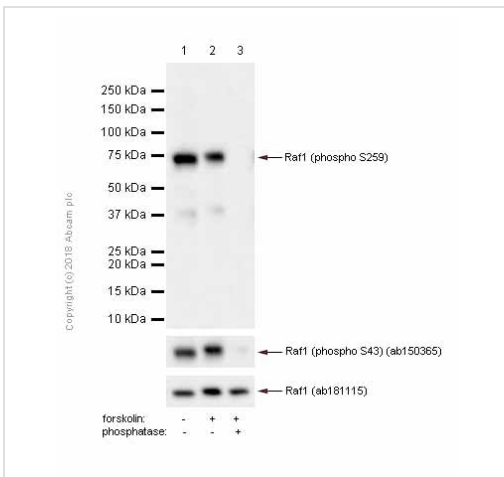
Lysates/proteins at 15 µg per lane.

**Secondary**

**All lanes** : Goat Anti-Rabbit IgG H&L (HRP) (**ab97051**) at 1/20000 dilution

**Predicted band size:** 73 kDa

**Observed band size:** 73 kDa



Western blot - Anti-Raf1 (phospho S259) antibody [EPR3433(2)] (ab173539)

**Lane 1** : Anti-Raf1 (phospho S259) antibody [EPR3433(2)] (ab173539) at 1/1000 dilution (Purified)

**Lanes 2-3** : Anti-Raf1 (phospho S259) antibody [EPR3433(2)] (ab173539) at 1/1000 dilution

**Lane 1** : C6 (Rat glial tumor glial cell) whole cell lysates

**Lane 2** : C6 (Rat glial tumor glial cell) treated with 30uM forskolin for 20 minutes whole cell lysates

**Lane 3** : C6 (Rat glial tumor glial cell) treated with 30uM forskolin for 20 minutes whole cell lysates, then incubated with phosphatase

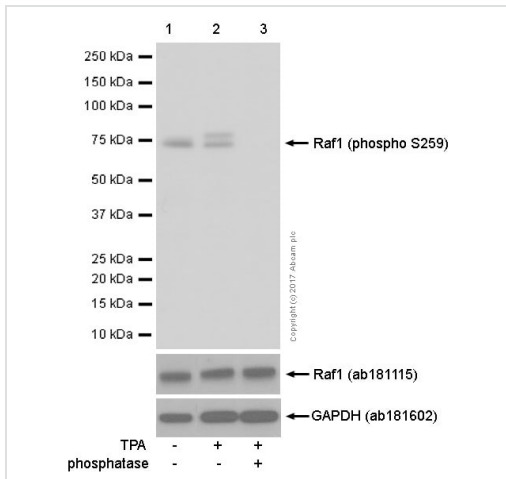
Lysates/proteins at 15 µg per lane.

**Secondary**

**All lanes** : Goat Anti-Rabbit IgG H&L (HRP) (**ab97051**) at 1/20000 dilution

**Predicted band size:** 73 kDa

**Observed band size:** 73 kDa



Western blot - Anti-Raf1 (phospho S259) antibody [EPR3433(2)] (ab173539)

**All lanes :** Anti-Raf1 (phospho S259) antibody [EPR3433(2)] (ab173539) at 1/5000 dilution

**Lane 1 :** HEK293 whole cell lysate

**Lane 2 :** HEK293 whole cell lysate treated with 100nM Phorbol-12-myristate-13-acetate for 1 hour

**Lane 3 :** HEK293 whole cell lysate treated with 100nM Phorbol-12-myristate-13-acetate for 1 hour then incubated with phosphatase

Lysates/proteins at 15 µg per lane.

### Secondary

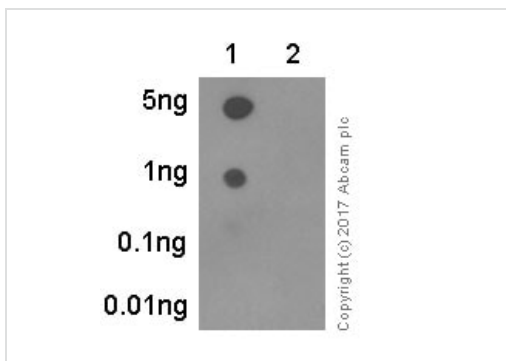
**All lanes :** Goat Anti-Rabbit IgG H&L (HRP) (**ab97051**) at 1/20000 dilution

**Predicted band size:** 73 kDa

**Observed band size:** 73 kDa

**Exposure time:** 1 second

Blocking and dilution buffer: 5% NFDm/TBST.

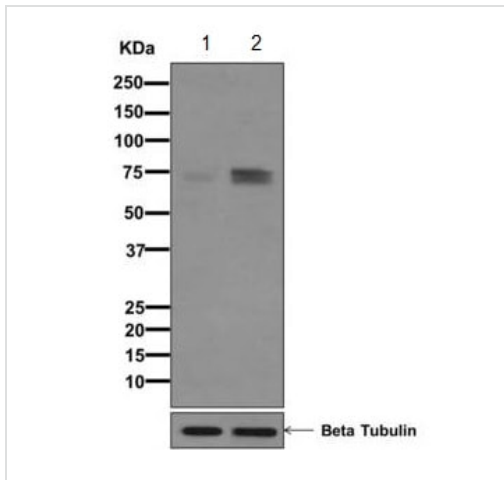


Dot Blot - Anti-Raf1 (phospho S259) antibody [EPR3433(2)] (ab173539)

Dot blot analysis of Raf1 (pS259) peptide (Lane 1) and Raf1 non-phospho peptide (Lane 2) labelling Raf1 (pS259) with ab173539 at a dilution of 1/1000. **ab97051** (Peroxidase conjugated goat anti-rabbit IgG (H+L)) was used as the secondary antibody at a dilution of 1/100000.

Blocking and dilution buffer: 5% NFDm/TBST.

Exposure time: 3 minutes.



Western blot - Anti-Raf1 (phospho S259) antibody [EPR3433(2)] (ab173539)

**All lanes :** Anti-Raf1 (phospho S259) antibody [EPR3433(2)] (ab173539) at 1/1000 dilution





**Lane 1 :** 293T cell lysates

**Lane 2 :** 293T cell lysates treated with Okadaic Acid + Calyculin A

Lysates/proteins at 10 µg per lane.

**Predicted band size:** 73 kDa

Why choose a recombinant antibody?

 <p><b>Research with confidence</b> Consistent and reproducible results</p>	 <p><b>Long-term and scalable supply</b> Recombinant technology</p>
 <p><b>Success from the first experiment</b> Confirmed specificity</p>	 <p><b>Ethical standards compliant</b> Animal-free production</p>

Anti-Raf1 (phospho S259) antibody [EPR3433(2)] (ab173539)

**Please note:** All products are "FOR RESEARCH USE ONLY. NOT FOR USE IN DIAGNOSTIC PROCEDURES"

### Our Promise to you: Quality guaranteed and expert technical support

- Replacement or refund for products not performing as stated on the datasheet
- Valid for 12 months from date of delivery
- Response to your inquiry within 24 hours
- We provide support in Chinese, English, French, German, Japanese and Spanish
- Extensive multi-media technical resources to help you

- We investigate all quality concerns to ensure our products perform to the highest standards

If the product does not perform as described on this datasheet, we will offer a refund or replacement. For full details of the Abpromise, please visit <https://www.abcam.co.jp/abpromise> or contact our technical team.

#### **Terms and conditions**

---

- Guarantee only valid for products bought direct from Abcam or one of our authorized distributors