




# Anti-RACGAP1/MGCRACGAP antibody ab2270

★★★★☆ **4 Abreviews**   **23 References**   画像数 5

### 製品の概要

製品名	Anti-RACGAP1/MGCRACGAP antibody
製品の詳細	Goat polyclonal to RACGAP1/MGCRACGAP
由来種	Goat
アプリケーション	<b>適用あり:</b> IHC-P, ICC, WB
種交差性	<b>交差種:</b> Human <b>交差が予測される動物種:</b> Cow, Dog 
免疫原	Synthetic peptide corresponding to Human RACGAP1/MGCRACGAP aa 600 to the C-terminus (C terminal). (NP_001306934.1; NP_001306935.1; NP_001306936.1) Database link: <a href="#">Q9H0H5</a> <div>  <a href="#">Run BLAST with</a>  <a href="#">Run BLAST with</a> </div>
ポジティブ・コントロール	WB: Human testis tissue lysate. K562 and Jurkat cell lysates. ICC: MCF7 cells. IHC-P: Human testis tissue.
特記事項	<p>The Life Science industry has been in the grips of a reproducibility crisis for a number of years. Abcam is leading the way in addressing this with our range of recombinant monoclonal antibodies and knockout edited cell lines for gold-standard validation. Please check that this product meets your needs before purchasing.</p> <p>If you have any questions, special requirements or concerns, please send us an inquiry and/or contact our Support team ahead of purchase. Recommended alternatives for this product can be found below, along with publications, customer reviews and Q&amp;As</p>

### 製品の特性

製品の状態	Liquid
保存方法	Shipped at 4°C. Upon delivery aliquot and store at -20°C or -80°C. Avoid repeated freeze / thaw cycles.
バッファー	pH: 7.30 Preservative: 0.02% Sodium azide Constituents: Tris buffered saline, 0.5% BSA
精製度	Immunogen affinity purified
特記事項 (精製)	Purified from goat serum by ammonium sulphate precipitation followed by antigen affinity chromatography using the immunizing peptide.

ポリモノ  
アイソタイプ

ポリクローナル  
IgG

## アプリケーション

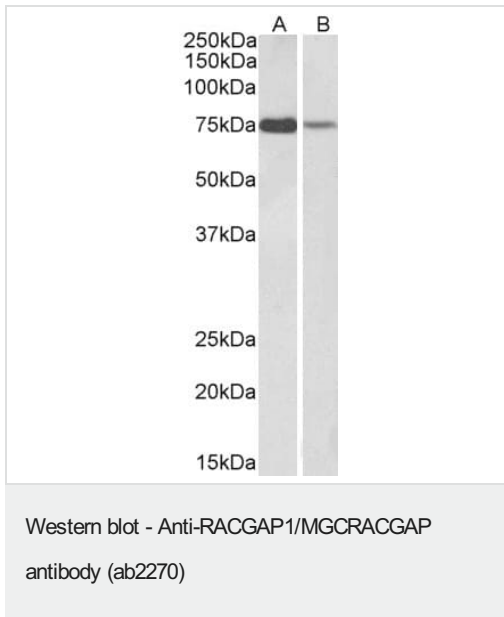
**The Abpromise guarantee** Abpromise保証は、 次のテスト済みアプリケーションにおけるab2270の使用に適用されます  
アプリケーションノートには、推奨の開始希釈率がありますが、適切な希釈率につきましてはご検討ください。

アプリケーション	Abreviews	特記事項
IHC-P		Use a concentration of 1 µg/ml.
ICC		Use a concentration of 10 µg/ml.
WB	★★★★☆ (2)	Use a concentration of 1 - 3 µg/ml. Detects a band of approximately 75 kDa (predicted molecular weight: 71 kDa). 1 hour primary incubation is recommended for this product.

## ターゲット情報

機能	Component of the centralspindlin complex that serves as a microtubule-dependent and Rho-mediated signaling required for the myosin contractile ring formation during the cell cycle cytokinesis. Plays key roles in controlling cell growth and differentiation of hematopoietic cells through mechanisms other than regulating Rac GTPase activity. Also involved in the regulation of growth-related processes in adipocytes and myoblasts. May be involved in regulating spermatogenesis and in the RACGAP1 pathway in neuronal proliferation. Shows strong GAP (GTPase activation) activity towards CDC42 and RAC1 and less towards RHOA. Essential for the early stages of embryogenesis. May play a role in regulating cortical activity through RHOA during cytokinesis. May participate in the regulation of sulfate transport in male germ cells.
組織特異性	Highly expressed in testis, thymus and placenta. Expressed at lower levels in spleen and peripheral blood lymphocytes. In testis, expression is restricted to germ cells with the highest levels of expression found in spermatocytes. Expression is regulated in a cell cycle-dependent manner and peaks during G2/M phase.
配列類似性	Contains 1 phorbol-ester/DAG-type zinc finger. Contains 1 Rho-GAP domain.
ドメイン	The coiled coil region is indispensable for localization to the midbody during cytokinesis.
翻訳後修飾	Phosphorylated at multiple sites in the midbody during cytokinesis. Phosphorylation by AURKB on Ser-387 at the midbody is, at least in part, responsible for exerting its latent GAP activity towards RhoA. Phosphorylation on multiple serine residues by PLK1 enhances its association with ECT2 and is critical for cleavage furrow formation.
細胞内局在	Nucleus. Cytoplasm. Cytoplasm > cytoskeleton > spindle. Cytoplasmic vesicle > secretory vesicle > acrosome. Cleavage furrow. Midbody. Colocalizes with RND2 in Golgi-derived proacrosomal vesicles and the acrosome (By similarity). During interphase, localized to the nucleus and cytoplasm along with microtubules, in anaphase, is redistributed to the central spindle and, in telophase and cytokinesis, to the midbody. Colocalizes with RHOA at the myosin contractile ring during cytokinesis. Colocalizes with ECT2 to the mitotic spindles during anaphase/metaphase, the cleavage furrow during telophase and at the midbody at the end of cytokinesis. Colocalizes

## 画像



**All lanes :**

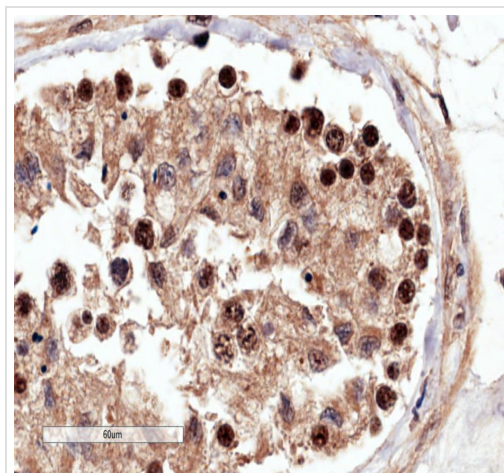
**Lane 1 :** K562 cell lysate (in RIPA buffer)

**Lane 2 :** Jurkat cell lysate (in RIPA buffer)

Lysates/proteins at 35 µg per lane.

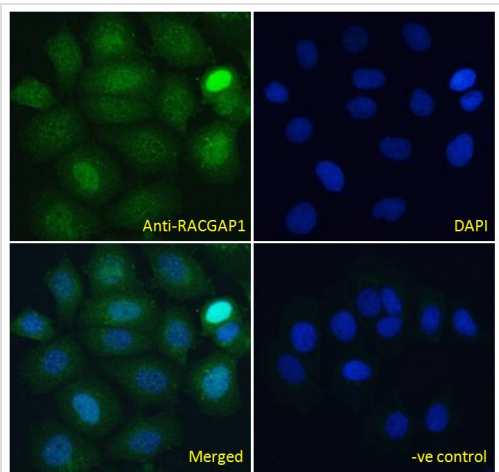
**Predicted band size:** 71 kDa

Primary incubation was 1 hour. Detected by chemiluminescence.



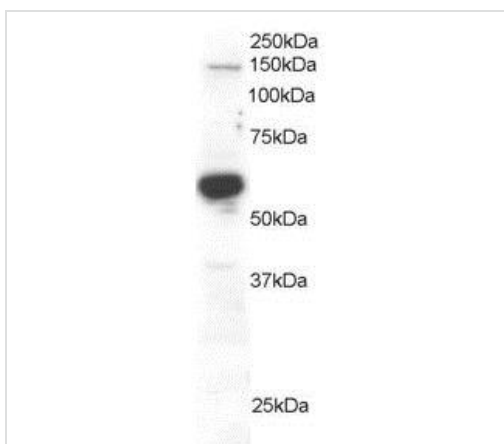
Paraffin embedded human testis tissue stained for RACGAP1/MGCRCAGAP using ab2270 at 4 µg/ml in immunohistochemical analysis.

Immunohistochemistry (Formalin/PFA-fixed paraffin-embedded sections) - Anti-RACGAP1/MGCRCAGAP antibody (ab2270)



Immunocytochemistry - Anti-RACGAP1/MGCRACGAP antibody (ab2270)

Immunocytochemistry analysis of paraformaldehyde fixed MCF7 (human breast adenocarcinoma cell line) cells labeling RACGAP1/MGCRACGAP with ab2270 at 10  $\mu\text{g/mL}$ . Cells permeabilized with 0.15% Triton. Primary incubation 1 hour followed by Alexa Fluor<sup>®</sup> 488 secondary antibody (4  $\mu\text{g/mL}$ ). The nuclear stain is DAPI (blue). Negative control: Unimmunized goat IgG (10  $\mu\text{g/mL}$ ) followed by Alexa Fluor<sup>®</sup> 488 secondary antibody (4  $\mu\text{g/mL}$ ).



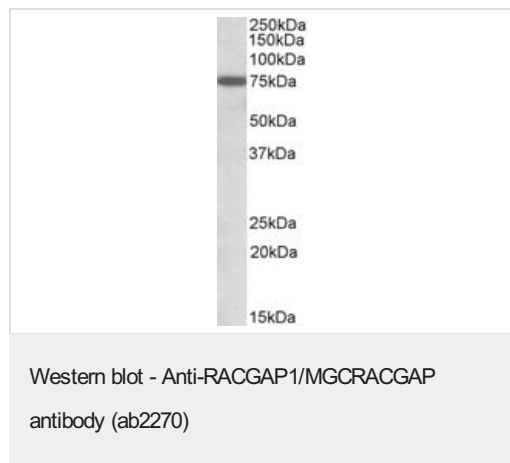
Western blot - Anti-RACGAP1/MGCRACGAP antibody (ab2270)

Anti-RACGAP1/MGCRACGAP antibody (ab2270) at 0.2  $\mu\text{g/ml}$  + Human Testis lysate (RIPA buffer) at 30  $\mu\text{g}$

**Predicted band size:** 71 kDa

ab2270 staining (0.2 $\mu\text{g/ml}$ ) of Human Testis lysate (RIPA buffer, 30 $\mu\text{g}$  total protein per lane). Primary incubated for 1 hour. Detected by western blot using chemiluminescence.

Primary incubated for 1 hour. Detected by western blot using chemiluminescence.



Anti-RACGAP1/MGCRACGAP antibody (ab2270) at 1 µg/ml +  
K562 cell lysate at 35 µg

Developed using the ECL technique.

**Predicted band size:** 71 kDa

**Observed band size:** 75 kDa

**Please note:** All products are "FOR RESEARCH USE ONLY. NOT FOR USE IN DIAGNOSTIC PROCEDURES"

### Our Abpromise to you: Quality guaranteed and expert technical support

---

- Replacement or refund for products not performing as stated on the datasheet
- Valid for 12 months from date of delivery
- Response to your inquiry within 24 hours
- We provide support in Chinese, English, French, German, Japanese and Spanish
- Extensive multi-media technical resources to help you
- We investigate all quality concerns to ensure our products perform to the highest standards

If the product does not perform as described on this datasheet, we will offer a refund or replacement. For full details of the Abpromise, please visit <https://www.abcam.co.jp/abpromise> or contact our technical team.

### Terms and conditions

---

- Guarantee only valid for products bought direct from Abcam or one of our authorized distributors