

Anti-RAC3 antibody [EPR6680] ab129062

リコンビナント RabMAb[®]

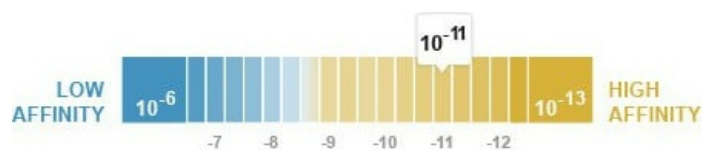
6 References [画像数 10](#)

製品の概要

製品名	Anti-RAC3 antibody [EPR6680]
製品の詳細	Rabbit monoclonal [EPR6680] to RAC3
由来種	Rabbit
アプリケーション	適用あり: WB, IHC-P
種交差性	交差種: Mouse, Rat, Human
免疫原	Synthetic peptide within Human RAC3 aa 100-200. The exact sequence is proprietary.
ポジティブ・コントロール	WB: Human brain, Mouse brain, and Rat brain lysates. IHC-P: human cerebrum, mouse cerebrum, and rat cerebrum tissues.
特記事項	<p>This product is a recombinant monoclonal antibody, which offers several advantages including:</p> <ul style="list-style-type: none"> - High batch-to-batch consistency and reproducibility - Improved sensitivity and specificity - Long-term security of supply - Animal-free production <p>For more information see here.</p> <p>Our RabMAb[®] technology is a patented hybridoma-based technology for making rabbit monoclonal antibodies. For details on our patents, please refer to RabMAb[®] patents.</p>

製品の特性

製品の状態	Liquid
保存方法	Shipped at 4°C. Store at +4°C short term (1-2 weeks). Upon delivery aliquot. Store at -20°C long term. Avoid freeze / thaw cycle.
解離定数 (K _D 値)	K _D = 7.20 x 10 ⁻¹¹ M



[Learn more about K_D](#)

バッファー	pH: 7.20 Preservative: 0.01% Sodium azide
-------	--

	Constituents: 59% PBS, 40% Glycerol (glycerin, glycerine), 0.05% BSA
精製度	Protein A purified
ポリ/モノ	モノクローナル
クローン名	EPR6680
アイソタイプ	IgG

アプリケーション

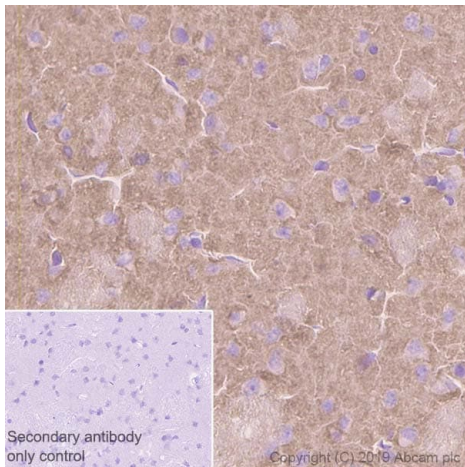
The Abpromise guarantee **Abpromise保証は、次のテスト済みアプリケーションにおけるab129062の使用に適用されず**
 アプリケーションノートには、推奨の開始希釈率がありますが、適切な希釈率につきましてはご検討ください。

アプリケーション	Abreviews	特記事項
WB		1/1000 - 1/10000. Detects a band of approximately 21 kDa (predicted molecular weight: 21 kDa).
IHC-P		1/50 - 1/100. Perform heat mediated antigen retrieval before commencing with IHC staining protocol. See IHC antigen retrieval protocols .

ターゲット情報

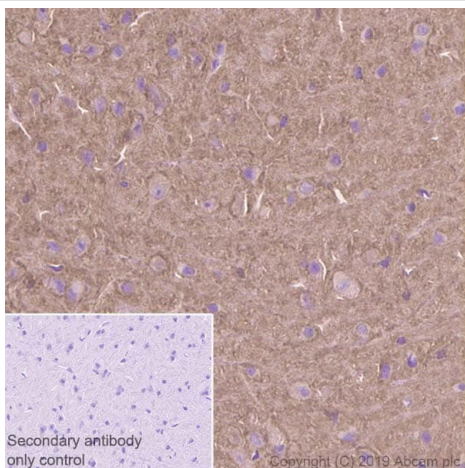
機能	Plasma membrane-associated small GTPase which cycles between an active GTP-bound and inactive GDP-bound state. In active state binds to a variety of effector proteins to regulate cellular responses, such as cell spreading and the formation of actin-based protrusions including lamellipodia and membrane ruffles. Promotes cell adhesion and spreading on fibrinogen in a CIB1 and alpha-IIb/beta3 integrin-mediated manner.
組織特異性	Highest levels in brain, also detected in heart, placenta and pancreas.
配列類似性	Belongs to the small GTPase superfamily. Rho family.
翻訳後修飾	(Microbial infection) Glycosylated at Tyr-32 by Photorhabdus asymbiotica toxin PAU_02230. Mono-O-GlcNAcylation by PAU_02230 inhibits downstream signaling by an impaired interaction with diverse regulator and effector proteins of Rac and leads to actin disassembly.
細胞内局在	Cytoplasm. Endomembrane system. Cell projection, lamellipodium. Cytoplasm, perinuclear region. Cell membrane. Cytoplasm, cytoskeleton. Membrane-associated when activated. Colocalizes with NRBP to endomembranes and at the cell periphery in lamellipodia. Colocalized with CIB1 in the perinuclear area and at the cell periphery.
製品の状態	Rac3 has high sequence homology with other Rac proteins. Therefore some antibodies may show cross-reactivity.

画像



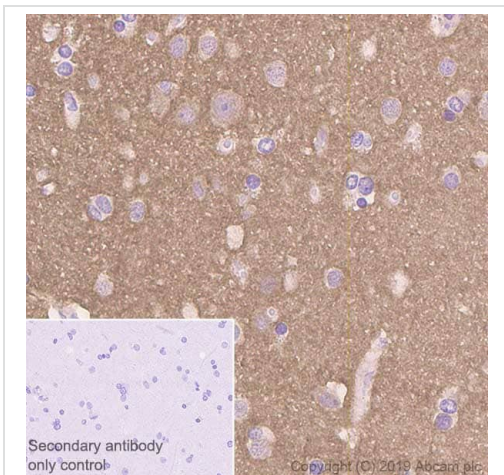
Immunohistochemistry (Formalin/PFA-fixed paraffin-embedded sections) - Anti-RAC3 antibody [EPR6680] (ab129062)

Immunohistochemistry (Formalin/PFA-fixed paraffin-embedded sections) analysis of rat cerebrum tissue sections labeling RAC3 with Purified ab129062 at 1:100 dilution (2.64 $\mu\text{g}/\text{ml}$). Heat mediated antigen retrieval using Bond™ Epitope Retrieval Solution 2 (pH 9.0). Rabbit specific IHC polymer detection kit HRP/DAB (**ab209101**) was used for detection. Negative control: PBS instead of the primary antibody. Hematoxylin was used as a counterstain.



Immunohistochemistry (Formalin/PFA-fixed paraffin-embedded sections) - Anti-RAC3 antibody [EPR6680] (ab129062)

Immunohistochemistry (Formalin/PFA-fixed paraffin-embedded sections) analysis of mouse cerebrum tissue sections labeling RAC3 with Purified ab129062 at 1:100 dilution (2.64 $\mu\text{g}/\text{ml}$). Heat mediated antigen retrieval using Bond™ Epitope Retrieval Solution 2 (pH 9.0). Rabbit specific IHC polymer detection kit HRP/DAB (**ab209101**) was used for detection. Negative control: PBS instead of the primary antibody. Hematoxylin was used as a counterstain.



Immunohistochemistry (Formalin/PFA-fixed paraffin-embedded sections) - Anti-RAC3 antibody [EPR6680] (ab129062)

Immunohistochemistry (Formalin/PFA-fixed paraffin-embedded sections) analysis of human cerebrum tissue sections labeling RAC3 with Purified ab129062 at 1:100 dilution (2.64 µg/ml). Heat mediated antigen retrieval using Bond™ Epitope Retrieval Solution 2 (pH 9.0). Rabbit specific IHC polymer detection kit HRP/DAB (**ab209101**) was used for detection. Negative control: PBS instead of the primary antibody. Hematoxylin was used as a counterstain.



Western blot - Anti-RAC3 antibody [EPR6680] (ab129062)

All lanes : Anti-RAC3 antibody [EPR6680] (ab129062) at 1/1000 dilution (Purified)

Lane 1 : Mouse brain lysates

Lane 2 : Rat brain lysates

Lysates/proteins at 15 µg per lane.

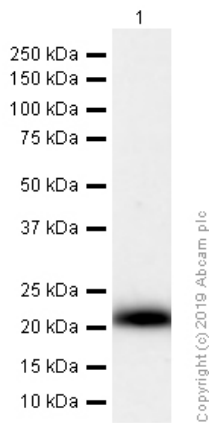
Secondary

All lanes : Goat Anti-Rabbit IgG H&L (HRP) (**ab97051**) at 1/20000 dilution

Predicted band size: 21 kDa

Observed band size: 21 kDa

We are unsure how to define the extra bands.



Western blot - Anti-RAC3 antibody [EPR6680]
(ab129062)

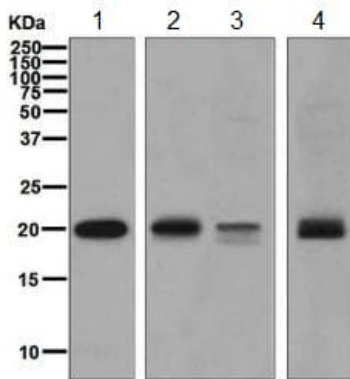
Anti-RAC3 antibody [EPR6680] (ab129062) at 1/1000 dilution
(Purified) + Human brain lysates at 20 µg

Secondary

Goat Anti-Rabbit IgG (HRP) with minimal cross-reactivity with
human IgG at 1/2000 dilution

Predicted band size: 21 kDa

Observed band size: 21 kDa



Western blot - Anti-RAC3 antibody [EPR6680]
(ab129062)

All lanes : Anti-RAC3 antibody [EPR6680] (ab129062) at 1/1000
dilution (unpurified)

Lane 1 : 293T cell lysate

Lane 2 : Fetal brain lysate

Lane 3 : SH-SY5Y cell lysate

Lane 4 : JAR cell lysate

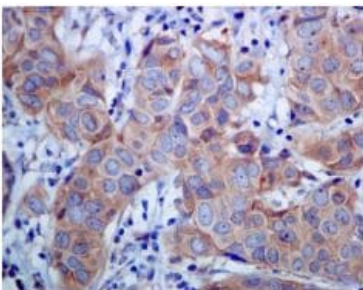
Lysates/proteins at 10 µg per lane.

Secondary

All lanes : Goat anti-rabbit HRP at 1/2000 dilution

Predicted band size: 21 kDa

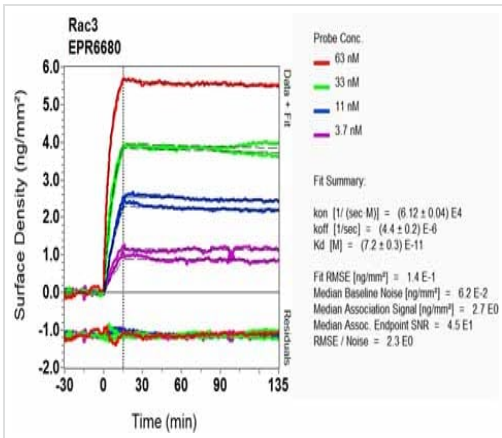
Observed band size: 21 kDa



Immunohistochemistry (Formalin/PFA-fixed paraffin-
embedded sections) - Anti-RAC3 antibody
[EPR6680] (ab129062)

ab129062 (unpurified) at 1/50 dilution staining RAC3 in paraffin-
embedded Human human breast carcinoma tissue by
immunohistochemistry.

Perform heat mediated antigen retrieval before commencing with
IHC staining protocol.

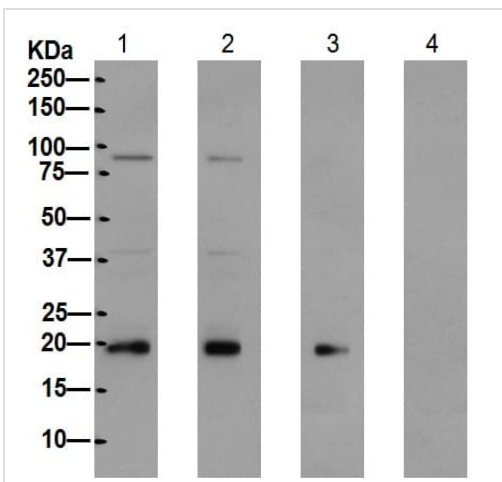


OI-RD Scanning - Anti-RAC3 antibody [EPR6680]
(ab129062)

Equilibrium disassociation constant (K_D)

Learn more about K_D

[Click here to learn more about \$K_D\$](#)



Western blot - Anti-RAC3 antibody [EPR6680]
(ab129062)

All lanes : Anti-RAC3 antibody [EPR6680] (ab129062) at 1/2000 dilution (unpurified)

Lane 1 : 293 cell extract

Lane 2 : 293 cell extract with Rac1 peptide

Lane 3 : 293 cell extract with Rac2 peptide

Lane 4 : 293 cell extract with Rac3 peptide

Lysates/proteins at 10 μ g per lane.

Secondary

All lanes : Peroxidase-conjugated goat anti-rabbit IgG at 1/1000 dilution

Predicted band size: 21 kDa

Why choose a recombinant antibody?

Research with confidence
Consistent and reproducible results

Long-term and scalable supply
Recombinant technology

Success from the first experiment
Confirmed specificity

Ethical standards compliant
Animal-free production

Anti-RAC3 antibody [EPR6680] (ab129062)

Please note: All products are "FOR RESEARCH USE ONLY. NOT FOR USE IN DIAGNOSTIC PROCEDURES"

Our Abpromise to you: Quality guaranteed and expert technical support

- Replacement or refund for products not performing as stated on the datasheet
- Valid for 12 months from date of delivery
- Response to your inquiry within 24 hours

- We provide support in Chinese, English, French, German, Japanese and Spanish
- Extensive multi-media technical resources to help you
- We investigate all quality concerns to ensure our products perform to the highest standards

If the product does not perform as described on this datasheet, we will offer a refund or replacement. For full details of the Abpromise, please visit <https://www.abcam.co.jp/abpromise> or contact our technical team.

Terms and conditions

- Guarantee only valid for products bought direct from Abcam or one of our authorized distributors