


Anti-Rab5A antibody - C-terminal ab228770

画像表示

医薬用外劇物

製品の概要

製品名	Anti-Rab5A antibody - C-terminal
製品の詳細	Rabbit polyclonal to Rab5A - C-terminal
由来種	Rabbit
アプリケーション	適用あり: WB, IP, IHC-P
種交差性	交差種: Mouse, Human 交差が予測される動物種: Rat, Dog, Rhesus monkey 
免疫原	Synthetic peptide within Human Rab5A (C terminal). The exact immunogen sequence used to generate this antibody is proprietary information. If additional detail on the immunogen is needed to determine the suitability of the antibody for your needs, please contact our Scientific Support team to discuss your requirements. (Carrier-protein conjugated). Database link: P20339
ポジティブ・コントロール	WB: A431 and Raji whole cell lysate; Mouse brain lysate. IP: HeLa whole cell lysate. IHC-P: U-87 MG xenograft.
特記事項	<p>The Life Science industry has been in the grips of a reproducibility crisis for a number of years. Abcam is leading the way in addressing this with our range of recombinant monoclonal antibodies and knockout edited cell lines for gold-standard validation. Please check that this product meets your needs before purchasing.</p> <p>If you have any questions, special requirements or concerns, please send us an inquiry and/or contact our Support team ahead of purchase. Recommended alternatives for this product can be found below, along with publications, customer reviews and Q&As</p>

製品の特性

製品の状態	Liquid
保存方法	Shipped at 4°C. Store at +4°C short term (1-2 weeks). Upon delivery aliquot. Store at -20°C long term. Avoid freeze / thaw cycle.
バッファー	pH: 7.00 Preservative: 0.01% Thimerosal (merthiolate) Constituents: 79.99% PBS, 20% Glycerol (glycerin, glycerine)
精製度	Immunogen affinity purified

ポリモノ
アイソタイプ

ポリクローナル
IgG

アプリケーション

The Abpromise guarantee Abpromise保証は、次のテスト済みアプリケーションにおけるab228770の使用に適用されます
アプリケーションノートには、推奨の開始希釈率がありますが、適切な希釈率につきましてはご検討ください。

アプリケーション	Abreviews	特記事項
WB		1/500 - 1/3000. Predicted molecular weight: 24 kDa.
IP		1/100 - 1/500.
IHC-P		1/100 - 1/1000.

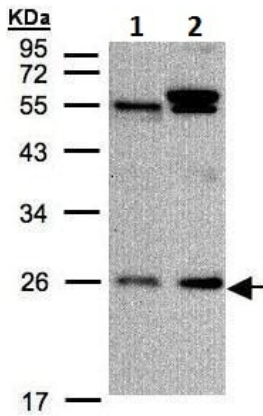
ターゲット情報

機能 The small GTPases Rab are key regulators of intracellular membrane trafficking, from the formation of transport vesicles to their fusion with membranes. Rabs cycle between an inactive GDP-bound form and an active GTP-bound form that is able to recruit to membranes different sets of downstream effectors directly responsible for vesicle formation, movement, tethering and fusion. RAB5A is required for the fusion of plasma membranes and early endosomes (PubMed:10818110, PubMed:14617813, PubMed:16410077, PubMed:15378032). Contributes to the regulation of filopodia extension (PubMed:14978216). Required for the exosomal release of SDCBP, CD63, PDCD6IP and syndecan (PubMed:22660413). Regulates maturation of apoptotic cell-containing phagosomes, probably downstream of DYN2 and PIK3C3.

配列類似性 Belongs to the small GTPase superfamily. Rab family.

細胞内局在 Cell membrane. Early endosome membrane. Melanosome. Cytoplasmic vesicle. Cell projection, ruffle. Membrane. Cytoplasm, cytosol. Cytoplasmic vesicle, phagosome membrane. Enriched in stage I melanosomes (PubMed:17081065). Alternates between membrane-bound and cytosolic forms (Probable).

画像



Western blot - Anti-Rab5A antibody - C-terminal (ab228770)

All lanes : Anti-Rab5A antibody - C-terminal (ab228770) at 1/1000 dilution

Lane 1 : A431 (human epidermoid carcinoma cell line) whole cell lysate

Lane 2 : Raji (human Burkitt's lymphoma cell line) whole cell lysate

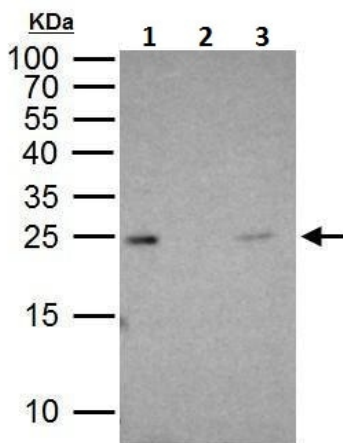
Lysates/proteins at 30 µg per lane.

Secondary

All lanes : HRP-conjugated anti-rabbit IgG

Predicted band size: 24 kDa

12% SDS-PAGE gel.



Immunoprecipitation - Anti-Rab5A antibody - C-terminal (ab228770)

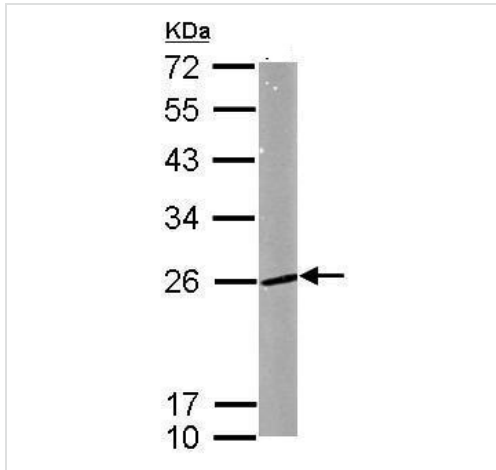
Rab5 was immunoprecipitated from 1 mg of HeLa (human epithelial cell line from cervix adenocarcinoma) whole cell lysate with ab228770. Western blot was performed from the immunoprecipitate using ab228770 at 1/1000 dilution. Anti-rabbit IgG was used as secondary antibody.

Lane 1: HeLa whole cell lysate 30 µg (Input).

Lane 2: Control IP with 2 µg of preimmune rabbit IgG in HeLa whole cell lysate.

Lane 3: ab228770 IP in HeLa whole cell lysate.

15% SDS-PAGE gel.



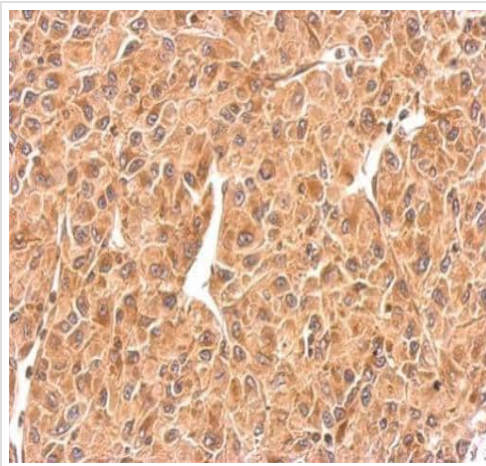
Western blot - Anti-Rab5A antibody - C-terminal (ab228770)

Anti-Rab5A antibody - C-terminal (ab228770) at 1/1000 dilution +
 Mouse brain lysate at 50 µg

Secondary

HRP-conjugated anti-rabbit IgG

Predicted band size: 24 kDa



Immunohistochemistry (Formalin/PFA-fixed paraffin-embedded sections) - Anti-Rab5A antibody - C-terminal (ab228770)

Paraffin-embedded U-87 MG (human glioblastoma-astrocytoma epithelial cell line) xenograft stained for Rab5 using ab228770 at 1/500 dilution in immunohistochemical analysis.

Please note: All products are "FOR RESEARCH USE ONLY. NOT FOR USE IN DIAGNOSTIC PROCEDURES"

Our Abpromise to you: Quality guaranteed and expert technical support

- Replacement or refund for products not performing as stated on the datasheet
- Valid for 12 months from date of delivery
- Response to your inquiry within 24 hours
- We provide support in Chinese, English, French, German, Japanese and Spanish
- Extensive multi-media technical resources to help you
- We investigate all quality concerns to ensure our products perform to the highest standards

If the product does not perform as described on this datasheet, we will offer a refund or replacement. For full details of the Abpromise, please visit <https://www.abcam.co.jp/abpromise> or contact our technical team.

Terms and conditions

- Guarantee only valid for products bought direct from Abcam or one of our authorized distributors