




### Anti-RAB11B antibody ab3612

★★★★★ 8 Abreviews 33 References 画像数 3

#### 製品の概要

製品名	Anti-RAB11B antibody
製品の詳細	Rabbit polyclonal to RAB11B
由来種	Rabbit
アプリケーション	適用あり: ICC, WB
種交差性	交差種: Dog, Human 交差が予測される動物種: Mouse, Rat, Rabbit, Chicken, Cow, Pig, Non human primates 
免疫原	Synthetic peptide corresponding to Human RAB11B aa 1-100.  <a href="#">Run BLAST with Expasy</a>  <a href="#">Run BLAST with NCBI</a>
ポジティブ・コントロール	WB: canine MDCK, human PC3; ICC: HeLa
特記事項	<p>The Life Science industry has been in the grips of a reproducibility crisis for a number of years. Abcam is leading the way in addressing this with our range of recombinant monoclonal antibodies and knockout edited cell lines for gold-standard validation. Please check that this product meets your needs before purchasing.</p> <p>If you have any questions, special requirements or concerns, please send us an inquiry and/or contact our Support team ahead of purchase. Recommended alternatives for this product can be found below, along with publications, customer reviews and Q&amp;As</p>

#### 製品の特性

製品の状態	Liquid
保存方法	Shipped at 4°C. Store at +4°C short term (1-2 weeks). Upon delivery aliquot. Store at -20°C. Avoid freeze / thaw cycle.
バッファー	Preservative: 0.05% Sodium azide Constituents: 99% PBS, 0.1% BSA
精製度	Immunogen affinity purified
ポリ/モノ	ポリクローナル
アイソタイプ	IgG

#### アプリケーション

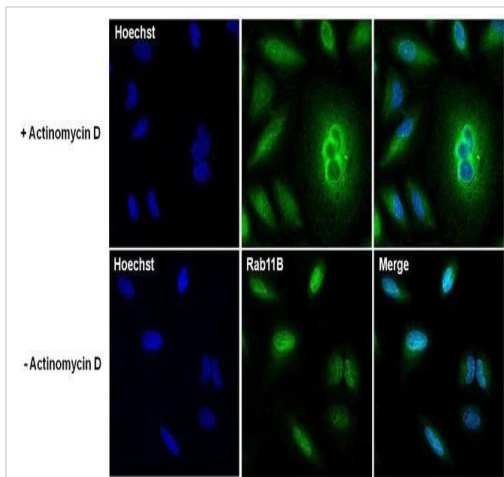
**The Abpromise guarantee**      **Abpromise保証は、** 次のテスト済みアプリケーションにおけるab3612の使用に適用されます  
 アプリケーションノートには、推奨の開始希釈率がありますが、適切な希釈率につきましてはご検討ください。

アプリケーション	Abreviews	特記事項
ICC		1/50 - 1/200.
WB	★★★★★ (2)	Use at an assay dependent concentration. Detects a band of approximately 22 kDa (predicted molecular weight: 24 kDa). By Western blot, this antibody detects an ~22 kDa protein representing Rab 11 in CV1, PC3, and HeLa cell extract. Another less prominent, unknown band is also detected by this antibody at ~35 kDa.

## ターゲット情報

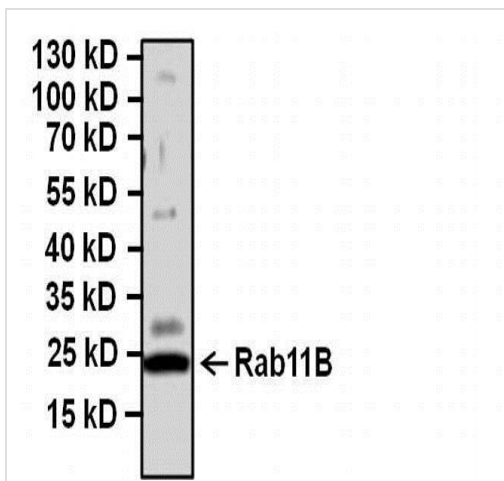
機能	The small GTPases Rab are key regulators of intracellular membrane trafficking, from the formation of transport vesicles to their fusion with membranes. Rabs cycle between an inactive GDP-bound form and an active GTP-bound form that is able to recruit to membranes different set of downstream effectors directly responsible for vesicle formation, movement, tethering and fusion. That Rab plays a role in endocytic recycling, regulating apical recycling of several transmembrane proteins including cystic fibrosis transmembrane conductance regulator/CFTR, epithelial sodium channel/ENaC, potassium voltage-gated channel, and voltage-dependent L-type calcium channel. May also regulate constitutive and regulated secretion, like insulin granule exocytosis. Required for melanosome transport and release from melanocytes. Also regulates V-ATPase intracellular transport in response to extracellular acidosis.
配列類似性	Belongs to the small GTPase superfamily. Rab family.
翻訳後修飾	Citrullinated by PAD14.
細胞内局在	Recycling endosome membrane. Cytoplasmic vesicle, secretory vesicle, synaptic vesicle membrane. Cytoplasmic vesicle, phagosome membrane. Recruited to phagosomes containing S.aureus.

## 画像



Immunocytochemistry - Anti-RAB11B antibody  
(ab3612)

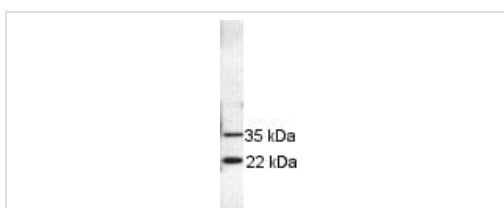
Immunocytochemical analysis of 4% paraformaldehyde-fixed 0.1% Triton X-100 permeabilized HeLa cells treated/untreated with actinomycin D. Rab11B is stained with ab3612 at a 1/100 dilution and a Goat anti-Rabbit IgG (H+L) Secondary Antibody, Alexa Fluor Plus 488 conjugate at a 1/500 dilution (green). Nuclear counterstaining is using Hoechst 33342 (blue).



Western blot - Anti-RAB11B antibody (ab3612)

Anti-RAB11B antibody (ab3612) at 1/500 dilution + MDCK (canine kidney cell line) whole cell lysate at 20 µg

**Predicted band size: 24 kDa**



Western blot - Anti-RAB11B antibody (ab3612)

ab3612 used on PC3 cell extract.

**Please note:** All products are "FOR RESEARCH USE ONLY. NOT FOR USE IN DIAGNOSTIC PROCEDURES"

### Our Promise to you: Quality guaranteed and expert technical support

- Replacement or refund for products not performing as stated on the datasheet
- Valid for 12 months from date of delivery
- Response to your inquiry within 24 hours

- We provide support in Chinese, English, French, German, Japanese and Spanish
- Extensive multi-media technical resources to help you
- We investigate all quality concerns to ensure our products perform to the highest standards

If the product does not perform as described on this datasheet, we will offer a refund or replacement. For full details of the Abpromise, please visit <https://www.abcam.co.jp/abpromise> or contact our technical team.

#### **Terms and conditions**

---

- Guarantee only valid for products bought direct from Abcam or one of our authorized distributors