

Anti-QPRT antibody [EPR11941(B)] ab171944

KO 評価済 リコンビナント RabMAb

6 References 画像数 4

製品の概要

製品名	Anti-QPRT antibody [EPR11941(B)]
製品の詳細	Rabbit monoclonal [EPR11941(B)] to QPRT
由来種	Rabbit
アプリケーション	適用あり: Flow Cyt (Intra), WB 適用なし: ICC/IF, IHC or IP
種交差性	交差種: Human 非交差種: Mouse, Rat
免疫原	Synthetic peptide within Human QPRT aa 250 to the C-terminus (C terminal) (Cysteine residue). The exact sequence is proprietary. Database link: Q15274
ポジティブ・コントロール	Human fetal kidney, Human fetal liver and Human fetal brain lysate, HepG2 and HeLa cell line lysates, Jurkat cells.
特記事項	This product is a recombinant monoclonal antibody, which offers several advantages including: - High batch-to-batch consistency and reproducibility - Improved sensitivity and specificity - Long-term security of supply - Animal-free production For more information see here . Our RabMAb [®] technology is a patented hybridoma-based technology for making rabbit monoclonal antibodies. For details on our patents, please refer to RabMAb[®] patents .

製品の特性

製品の状態	Liquid
保存方法	Shipped at 4°C. Store at +4°C short term (1-2 weeks). Upon delivery aliquot. Store at -20°C long term. Avoid freeze / thaw cycle.
バッファー	pH: 7.20 Preservative: 0.01% Sodium azide Constituents: 9% PBS, 40% Glycerol (glycerin, glycerine), 0.05% BSA, 50% Tissue culture supernatant

精製度	Tissue culture supernatant
ポリ/モノ	モノクローナル
クローン名	EPR11941(B)
アイソタイプ	IgG

アプリケーション

The Abpromise guarantee Abpromise保証は、次のテスト済みアプリケーションにおけるab171944の使用に適用されず
アプリケーションノートには、推奨の開始希釈率がありますが、適切な希釈率につきましてはご確認ください。

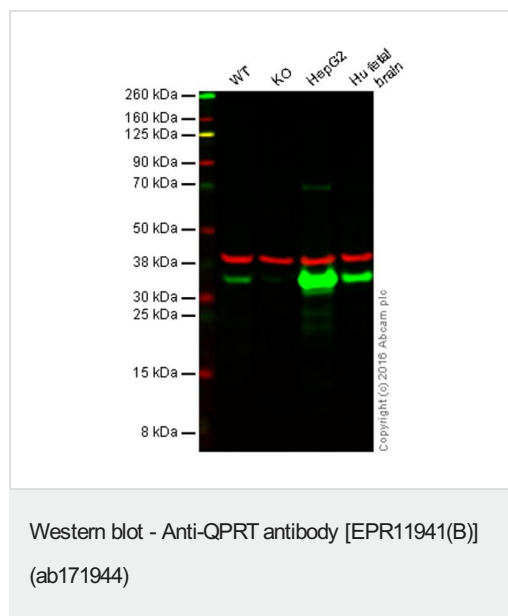
アプリケーション	Abreviews	特記事項
Flow Cyt (Intra)		1/10 - 1/100. ab172730 - Rabbit monoclonal IgG, is suitable for use as an isotype control with this antibody.
WB		1/1000 - 1/5000. Predicted molecular weight: 31 kDa.

追加情報 Is unsuitable for ICC/IF, IHC or IP.

ターゲット情報

機能	Involved in the catabolism of quinolinic acid (QA).
パスウェイ	Cofactor biosynthesis; NAD(+) biosynthesis; nicotinate D-ribonucleotide from quinolinate: step 1/1.
配列類似性	Belongs to the nadC/modD family.

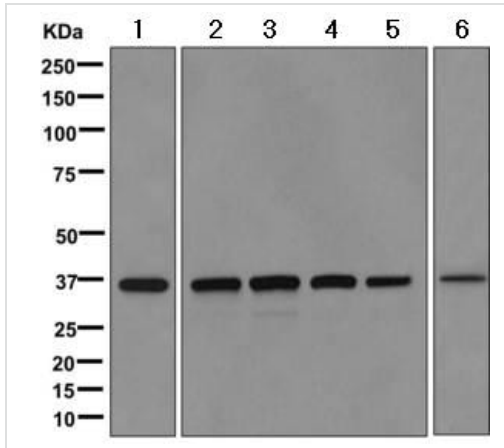
画像



Lane 1: Wild-type HAP1 cell lysate (20 µg)
Lane 2: QPRT knockout HAP1 cell lysate (20 µg)
Lane 3: HepG2 cell lysate (20 µg)
Lane 4: Human fetal brain cell lysate (20 µg)
Lanes 1 - 4: Merged signal (red and green). Green - ab171944 observed at 35 kDa. Red - loading control, **ab8245**, observed at 37 kDa.

ab171944 was shown to specifically react with QPRT when QPRT knockout samples were used. Wild-type and QPRT knockout samples were subjected to SDS-PAGE. ab171944 and **ab8245** (loading control to GAPDH) were diluted 1/1000 and 1/10 000 respectively and incubated overnight at 4°C. Blots were developed with Goat anti-Rabbit IgG H&L (IRDye® 800CW) preadsorbed **ab216773** and Goat anti-Mouse IgG H&L (IRDye® 680RD) preadsorbed **ab216776** secondary antibodies at 1/10 000 dilution

for 1 h at room temperature before imaging.



Western blot - Anti-QPRT antibody [EPR11941(B)] (ab171944)

All lanes : Anti-QPRT antibody [EPR11941(B)] (ab171944) at 1/1000 dilution

Lane 1 : Human fetal kidney tissue lysate

Lane 2 : Human fetal liver tissue lysate

Lane 3 : HepG2 cell lysate

Lane 4 : HeLa cell lysate

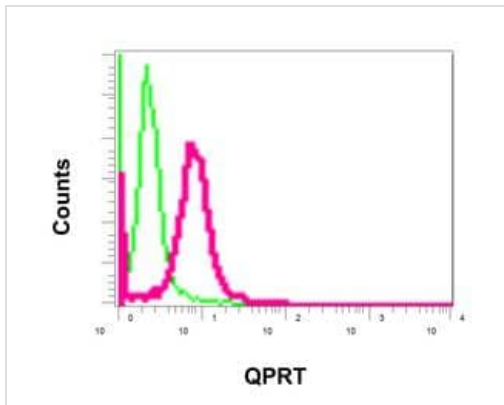
Lane 5 : Jurkat cell lysate

Lane 6 : Human fetal heart tissue lysate

Lysates/proteins at 10 μ g per lane.

Developed using the ECL technique.

Predicted band size: 31 kDa



Flow Cytometry (Intracellular) - Anti-QPRT antibody [EPR11941(B)] (ab171944)

Intracellular flow cytometric analysis of permeabilized Jurkat cells labeling QPRT with ab171944 at 1/10 (red) or a rabbit IgG (negative) (green).

Why choose a recombinant antibody?



Research with confidence
Consistent and reproducible results



Long-term and scalable supply
Recombinant technology



Success from the first experiment
Confirmed specificity



Ethical standards compliant
Animal-free production

Anti-QPRT antibody [EPR11941(B)] (ab171944)

Please note: All products are "FOR RESEARCH USE ONLY. NOT FOR USE IN DIAGNOSTIC PROCEDURES"

Our Abpromise to you: Quality guaranteed and expert technical support

- Replacement or refund for products not performing as stated on the datasheet
- Valid for 12 months from date of delivery
- Response to your inquiry within 24 hours
- We provide support in Chinese, English, French, German, Japanese and Spanish
- Extensive multi-media technical resources to help you
- We investigate all quality concerns to ensure our products perform to the highest standards

If the product does not perform as described on this datasheet, we will offer a refund or replacement. For full details of the Abpromise, please visit <https://www.abcam.co.jp/abpromise> or contact our technical team.

Terms and conditions

- Guarantee only valid for products bought direct from Abcam or one of our authorized distributors