


### Anti-PYGL antibody ab198268

★★★★☆ [3 Abreviews](#) [9 References](#) [画像数 2](#)

#### 製品の概要

製品名	Anti-PYGL antibody
製品の詳細	Rabbit polyclonal to PYGL
由来種	Rabbit
アプリケーション	<b>適用あり:</b> IHC-P, WB
種交差性	<b>交差種:</b> Human <b>交差が予測される動物種:</b> Mouse, Rat 
免疫原	Recombinant fragment (GST-tag) corresponding to Human PYGL (C terminal). BC082229 Database link: <a href="#">P06737</a>
ポジティブ・コントロール	231 and PC3 cell lysates. Human thyroid cancer tissue.
特記事項	<p>The Life Science industry has been in the grips of a reproducibility crisis for a number of years. Abcam is leading the way in addressing this with our range of recombinant monoclonal antibodies and knockout edited cell lines for gold-standard validation. Please check that this product meets your needs before purchasing.</p> <p>If you have any questions, special requirements or concerns, please send us an inquiry and/or contact our Support team ahead of purchase. Recommended alternatives for this product can be found below, along with publications, customer reviews and Q&amp;As</p>

#### 製品の特性

製品の状態	Liquid
保存方法	Shipped at 4°C. Store at +4°C short term (1-2 weeks). Upon delivery aliquot. Store at -20°C long term. Avoid freeze / thaw cycle.
バッファー	pH: 7.4 Preservative: 0.05% Sodium azide Constituents: 49% PBS, 50% Glycerol (glycerin, glycerine)
精製度	Immunogen affinity purified
ポリ/モノ	ポリクローナル
アイソタイプ	IgG

#### アプリケーション

## The Abpromise guarantee

**Abpromise保証は、次のテスト済みアプリケーションにおけるab198268の使用に適用されます**

アプリケーションノートには、推奨の開始希釈率がありますが、適切な希釈率につきましてはご検討ください。

アプリケーション	Abreviews	特記事項
IHC-P	★★★★★ (1)	1/30 - 1/150.
WB	★★★★★ (2)	1/500 - 1/2000. Predicted molecular weight: 97 kDa.

## ターゲット情報

### 機能

Phosphorylase is an important allosteric enzyme in carbohydrate metabolism. Enzymes from different sources differ in their regulatory mechanisms and in their natural substrates. However, all known phosphorylases share catalytic and structural properties.

### 関連疾患

Defects in PYGL are the cause of glycogen storage disease type 6 (GSD6) [MIM:232700]. A metabolic disorder characterized by mild to moderate hypoglycemia, mild ketosis, growth retardation, and prominent hepatomegaly. Heart and skeletal muscle are not affected.

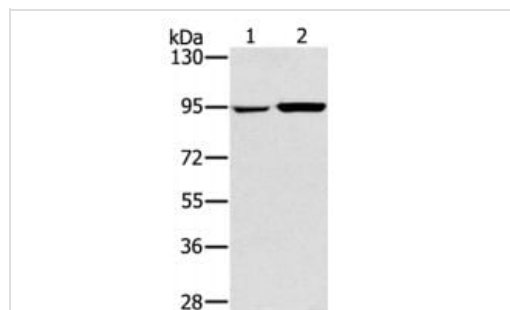
### 配列類似性

Belongs to the glycogen phosphorylase family.

### 翻訳後修飾

Phosphorylation of Ser-15 converts phosphorylase B (unphosphorylated) to phosphorylase A.

## 画像



Western blot - Anti-PYGL antibody (ab198268)

**All lanes** : Anti-PYGL antibody (ab198268) at 1/400 dilution

**Lane 1** : 231 cell lysate

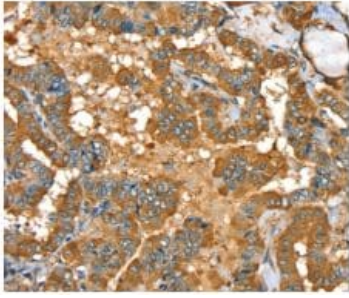
**Lane 2** : PC3 cell lysate

Lysates/proteins at 40 µg per lane.

Developed using the ECL technique.

**Predicted band size:** 97 kDa

**Exposure time:** 20 seconds



Immunohistochemical analysis of paraffin-embedded Human thyroid cancer tissue labeling PYGL with ab198268 at 1/35 dilution.

Immunohistochemistry (Formalin/PFA-fixed paraffin-embedded sections) - Anti-PYGL antibody (ab198268)

**Please note:** All products are "FOR RESEARCH USE ONLY. NOT FOR USE IN DIAGNOSTIC PROCEDURES"

### **Our Abpromise to you: Quality guaranteed and expert technical support**

---

- Replacement or refund for products not performing as stated on the datasheet
- Valid for 12 months from date of delivery
- Response to your inquiry within 24 hours
  
- We provide support in Chinese, English, French, German, Japanese and Spanish
- Extensive multi-media technical resources to help you
- We investigate all quality concerns to ensure our products perform to the highest standards

If the product does not perform as described on this datasheet, we will offer a refund or replacement. For full details of the Abpromise, please visit <https://www.abcam.co.jp/abpromise> or contact our technical team.

### **Terms and conditions**

---

- Guarantee only valid for products bought direct from Abcam or one of our authorized distributors