




Anti-PTGES2/Gbf1 antibody ab233274

1 References [画像数 9](#)

製品の概要

製品名	Anti-PTGES2/Gbf1 antibody
製品の詳細	Rabbit polyclonal to PTGES2/Gbf1
由来種	Rabbit
アプリケーション	適用あり: WB, IHC-P
種交差性	交差種: Mouse, Human, Pig 交差が予測される動物種: Cynomolgus monkey 
免疫原	Recombinant fragment (His-T7-tag) corresponding to Human PTGES2/Gbf1 aa 100 to the C-terminus. (Expressed in E.coli). Database link: Q9H7Z7 <div style="text-align: right;">  Run BLAST with  Run BLAST with </div>
ポジティブ・コントロール	IHC-P: Human brain, liver, colorectal cancer and kidney tissues. WB: HepG2 and HeLa cell lysates; Pig and mouse heart lysates; Recombinant human PTGES2/Gbf1 protein.
特記事項	<p>The Life Science industry has been in the grips of a reproducibility crisis for a number of years. Abcam is leading the way in addressing this with our range of recombinant monoclonal antibodies and knockout edited cell lines for gold-standard validation. Please check that this product meets your needs before purchasing.</p> <p>If you have any questions, special requirements or concerns, please send us an inquiry and/or contact our Support team ahead of purchase. Recommended alternatives for this product can be found below, along with publications, customer reviews and Q&As</p>

製品の特性

製品の状態	Liquid
保存方法	Shipped at 4°C. Store at +4°C short term (1-2 weeks). Upon delivery aliquot. Store at -20°C long term. Avoid freeze / thaw cycle.
バッファー	pH: 7.40 Preservative: 0.02% Sodium azide Constituents: 44.12% PBS, 55.77% Glycerol (glycerin, glycerine)
精製度	Immunogen affinity purified
特記事項 (精製)	ab233274 was purified by antigen-specific affinity chromatography followed by Protein A affinity chromatography.

ポリ/モノ
アイソタイプ

ポリクローナル
IgG

アプリケーション

The Abpromise guarantee **Abpromise保証は、次のテスト済みアプリケーションにおけるab233274の使用に適用されず**
アプリケーションノートには、推奨の開始希釈率がありますが、適切な希釈率につきましてはご検討ください。

アプリケーション	Abreviews	特記事項
WB		Use a concentration of 0.2 - 2 µg/ml. Predicted molecular weight: 42 kDa.
IHC-P		Use a concentration of 5 - 20 µg/ml.

ターゲット情報

機能 Isomerase that catalyzes the conversion of unstable intermediate of prostaglandin E2 H2 (PGH2) into the more stable prostaglandin E2 (PGE2) form. May also have transactivation activity toward IFN-gamma (IFNG), possibly via an interaction with CEBPB; however, the relevance of transcription activation activity remains unclear.

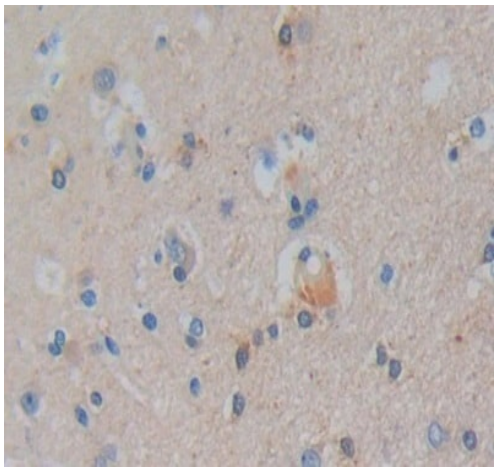
組織特異性 Widely expressed. Expressed in the heart, including apex, inter-ventricular septum, both atria and ventricles, but not in the aorta. Also expressed in fetal heart. Detected in various regions of the brain: cerebellum; occipital, frontal and parietal lobes. Also expressed in the lymph nodes, skeletal muscle, kidney and trachea, but not in the thymus or lung. Overexpressed in colorectal cancer.

パスウェイ Lipid metabolism; prostaglandin biosynthesis.

配列類似性 Belongs to the GST superfamily.
Contains 1 glutaredoxin domain.
Contains 1 GST C-terminal domain.

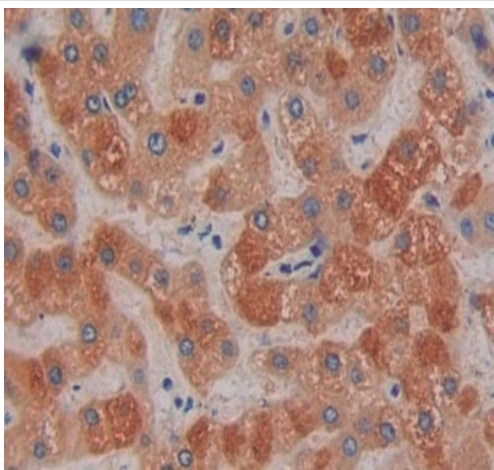
細胞内局在 Golgi apparatus membrane and Cytoplasm > perinuclear region. Synthesized as a Golgi membrane-bound protein, which is further cleaved into the predominant soluble truncated form. The truncated form is cytoplasmic and is enriched in the perinuclear region.

画像



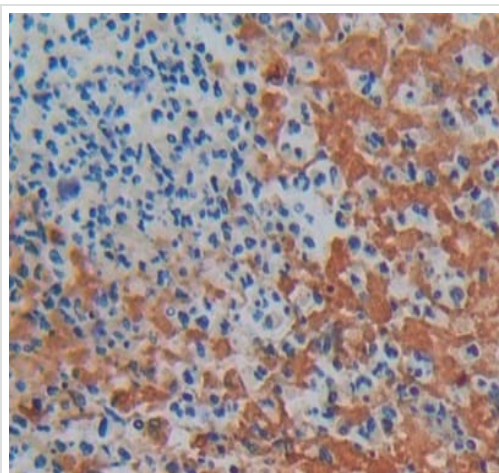
Paraffin-embedded human brain tissue stained for PTGES2/Gbf1 using ab233274 at 10 µg/ml in immunohistochemical analysis. DAB staining.

Immunohistochemistry (Formalin/PFA-fixed paraffin-embedded sections) - Anti-PTGES2/Gbf1 antibody (ab233274)



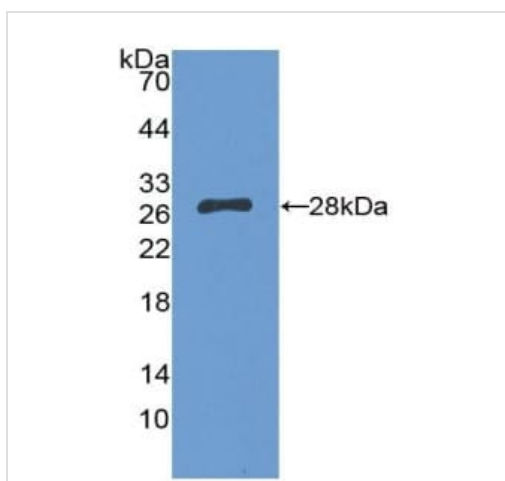
Paraffin-embedded human liver tissue stained for PTGES2/Gbf1 using ab233274 at 20 µg/ml in immunohistochemical analysis. DAB staining.

Immunohistochemistry (Formalin/PFA-fixed paraffin-embedded sections) - Anti-PTGES2/Gbf1 antibody (ab233274)



Immunohistochemistry (Formalin/PFA-fixed paraffin-embedded sections) - Anti-PTGES2/Gbf1 antibody (ab233274)

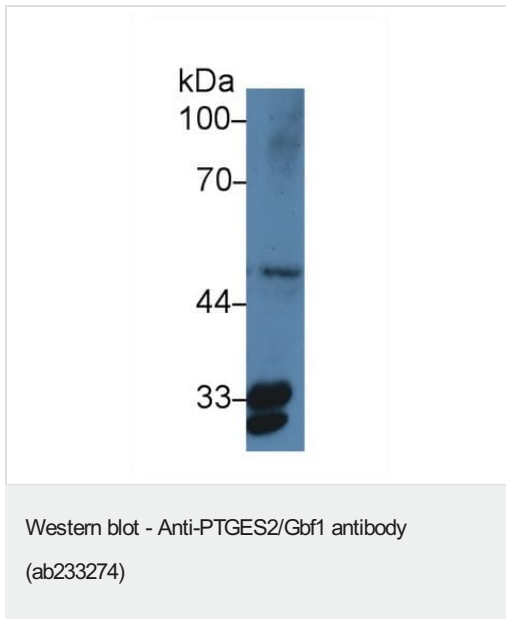
Paraffin-embedded human colorectal cancer tissue stained for PTGES2/Gbf1 using ab233274 at 20 $\mu\text{g/ml}$ in immunohistochemical analysis. DAB staining.



Western blot - Anti-PTGES2/Gbf1 antibody (ab233274)

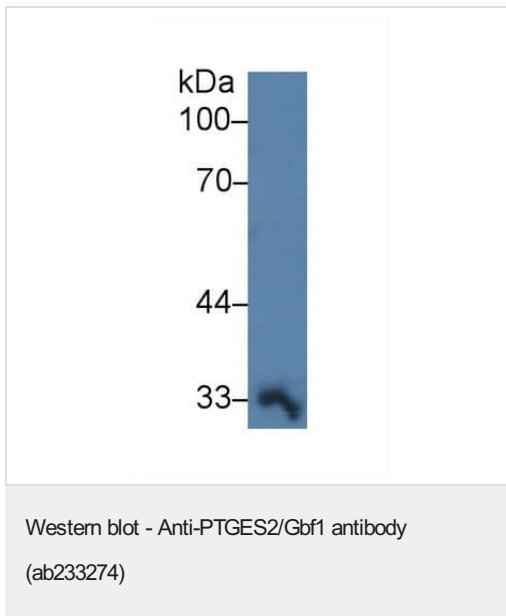
Anti-PTGES2/Gbf1 antibody (ab233274) at 2 $\mu\text{g/ml}$ + Recombinant human PTGES2/Gbf1 protein

Predicted band size: 42 kDa



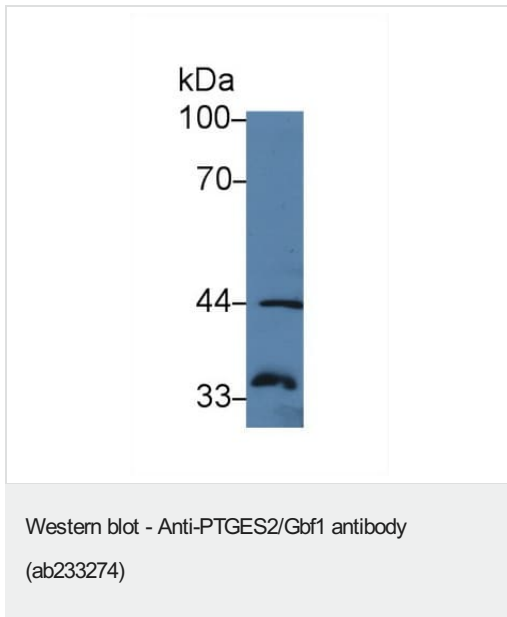
Anti-PTGES2/Gbf1 antibody (ab233274) at 2 µg/ml + HepG2 (human liver hepatocellular carcinoma cell line) cell lysate

Predicted band size: 42 kDa



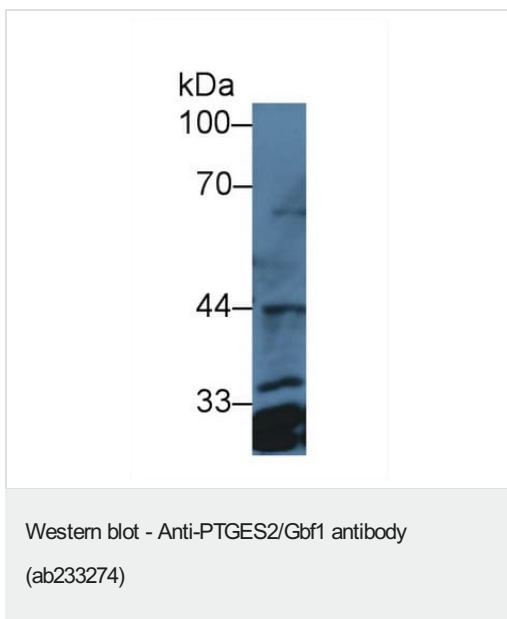
Anti-PTGES2/Gbf1 antibody (ab233274) at 2 µg/ml + Pig heart lysate

Predicted band size: 42 kDa



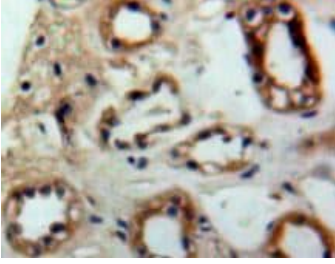
Anti-PTGES2/Gbf1 antibody (ab233274) at 2 µg/ml + Mouse heart lysate

Predicted band size: 42 kDa



Anti-PTGES2/Gbf1 antibody (ab233274) at 2 µg/ml + HeLa (human epithelial cell line from cervix adenocarcinoma) cell lysate

Predicted band size: 42 kDa



Formalin-fixed, paraffin-embedded human kidney tissue stained for PTGES2/Gbf1 using ab233274 at 20 µg/ml in immunohistochemical analysis. DAB staining.

Immunohistochemistry (Formalin/PFA-fixed paraffin-embedded sections) - Anti-PTGES2/Gbf1 antibody (ab233274)

Please note: All products are "FOR RESEARCH USE ONLY. NOT FOR USE IN DIAGNOSTIC PROCEDURES"

Our Abpromise to you: Quality guaranteed and expert technical support

- Replacement or refund for products not performing as stated on the datasheet
- Valid for 12 months from date of delivery
- Response to your inquiry within 24 hours

- We provide support in Chinese, English, French, German, Japanese and Spanish
- Extensive multi-media technical resources to help you
- We investigate all quality concerns to ensure our products perform to the highest standards

If the product does not perform as described on this datasheet, we will offer a refund or replacement. For full details of the Abpromise, please visit <https://www.abcam.co.jp/abpromise> or contact our technical team.

Terms and conditions

- Guarantee only valid for products bought direct from Abcam or one of our authorized distributors