

Anti-PSPC1 antibody ab104238

5 References [画像数 3](#)

製品の概要

製品名	Anti-PSPC1 antibody
製品の詳細	Rabbit polyclonal to PSPC1
由来種	Rabbit
アプリケーション	適用あり: WB, ICC/IF, IP
種交差性	交差種: Human 交差が予測される動物種: Mouse, Rat, Rabbit, Chimpanzee, Macaque monkey, Gorilla, Chinese hamster, Orangutan, Elephant 
免疫原	Synthetic peptide corresponding to Human PSPC1 aa 50-150 conjugated to keyhole limpet haemocyanin. (Peptide available as ab130811)
ポジティブ・コントロール	This antibody gave a positive signal in both HEK293 + U20S whole cell lysates and HepG2 and MCF7 cell lines in IF.
特記事項	<p>The Life Science industry has been in the grips of a reproducibility crisis for a number of years. Abcam is leading the way in addressing this with our range of recombinant monoclonal antibodies and knockout edited cell lines for gold-standard validation. Please check that this product meets your needs before purchasing.</p> <p>If you have any questions, special requirements or concerns, please send us an inquiry and/or contact our Support team ahead of purchase. Recommended alternatives for this product can be found below, along with publications, customer reviews and Q&As</p>

製品の特性

製品の状態	Liquid
保存方法	Shipped at 4°C. Store at +4°C short term (1-2 weeks). Upon delivery aliquot. Store at -20°C or -80°C. Avoid freeze / thaw cycle.
バッファー	pH: 7.40 Preservative: 0.02% Sodium azide Constituent: PBS
	Batches of this product that have a concentration < 1mg/ml may have BSA added as a stabilising agent. If you would like information about the formulation of a specific lot, please contact our scientific support team who will be happy to help.

精製度	Immunogen affinity purified
ポリ/モノ	ポリクローナル
アイソタイプ	IgG

アプリケーション

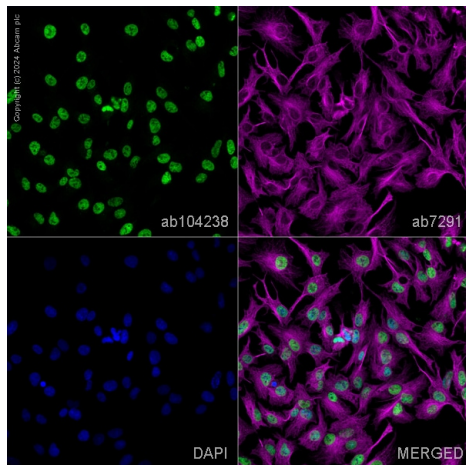
The Abpromise guarantee **Abpromise保証は、** 次のテスト済みアプリケーションにおけるab104238の使用に適用されます
アプリケーションノートには、推奨の開始希釈率がありますが、適切な希釈率につきましてはご検討ください。

アプリケーション	Abreviews	特記事項
WB		Use a concentration of 1 µg/ml. Detects a band of approximately 62 kDa (predicted molecular weight: 58 kDa).
ICC/IF		Use a concentration of 5 µg/ml.
IP		Use a concentration of 5 µg/ml.

ターゲット情報

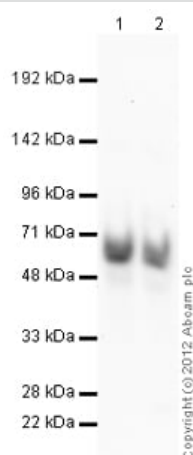
機能	Regulates, cooperatively with NONO and SFPQ, androgen receptor-mediated gene transcription activity in Sertoli cell line (By similarity). Binds to poly(A), poly(G) and poly(U) RNA homopolymers.
組織特異性	Expressed in pancreas, kidney, skeletal muscle, liver, lung, placenta, brain and heart.
配列類似性	Belongs to the PSPC family. Contains 2 RRM (RNA recognition motif) domains.
翻訳後修飾	Phosphorylated upon DNA damage, probably by ATM or ATR.
細胞内局在	Nucleus > nucleolus. Nucleus matrix. Cytoplasm. In punctate subnuclear structures often located adjacent to splicing speckles, called paraspeckles. Colocalizes with NONO and SFPQ in paraspeckles and perinucleolar caps in a RNA-dependent manner. May cycles between paraspeckles and nucleolus. In telophase, when daughter nuclei form, localizes to perinucleolar caps.

画像



Immunocytochemistry/ Immunofluorescence - Anti-PSPC1 antibody (ab104238)

ab104238 staining PSPC1 in HepG2 cells. The cells were fixed with 4% paraformaldehyde (10 min), permeabilized with 0.1% PBS-Triton X-100 for 5 minutes and then blocked with 1% BSA/10% normal goat serum/0.3M glycine in 0.1%PBS-Tween for 1h. The cells were then incubated overnight at 4°C with ab104238 at 1µg/ml and **ab7291**, Mouse monoclonal [DM1A] to alpha Tubulin - Loading Control. Cells were then incubated with **ab150081**, Goat polyclonal Secondary Antibody to Rabbit IgG - H&L (Alexa Fluor® 488), pre-adsorbed at 1/1000 dilution (shown in green) and **ab150120**, Goat polyclonal Secondary Antibody to Mouse IgG - H&L (Alexa Fluor® 594), pre-adsorbed at 1/1000 dilution (shown in pseudocolour magenta). Nuclear DNA was labelled with DAPI (shown in blue). Image was acquired with a high-content analyser (Operetta CLS, Perkin Elmer) and a maximum intensity projection of confocal sections is shown.



Western blot - Anti-PSPC1 antibody (ab104238)

All lanes : Anti-PSPC1 antibody (ab104238) at 1 µg/ml (Milk blocking - 3%)

Lane 1 : HEK293 (Human embryonic kidney cell line) Whole Cell Lysate

Lane 2 : U2OS (Human osteosarcoma cell line) Whole Cell Lysate

Lysates/proteins at 10 µg per lane.

Secondary

All lanes : Goat Anti-Rabbit IgG H&L (HRP) preadsorbed (**ab97080**) at 1/5000 dilution

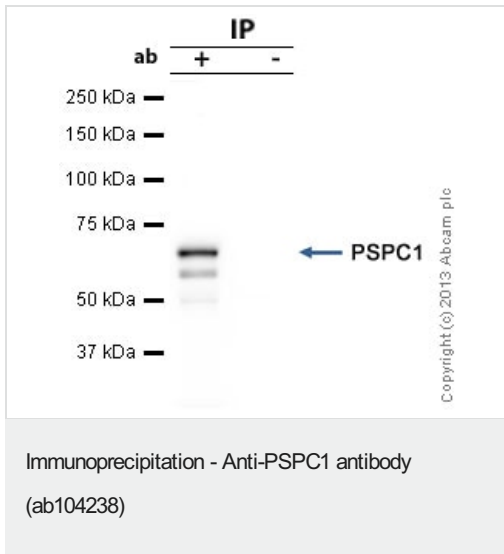
Developed using the ECL technique.

Performed under reducing conditions.

Predicted band size: 58 kDa

Observed band size: 62 kDa

Exposure time: 2 minutes



PSPC1 was immunoprecipitated using 0.5mg Hek293 whole cell extract, 5µg of Rabbit polyclonal to and 50µl of protein G magnetic beads (+). No antibody was added to the control (-).

The antibody was incubated under agitation with Protein G beads for 10min, Hek293 whole cell extract lysate diluted in RIPA buffer was added to each sample and incubated for a further 10min under agitation.

Proteins were eluted by addition of 40µl SDS loading buffer and incubated for 10min at 70°C; 10µl of each sample was separated on a SDS PAGE gel, transferred to a nitrocellulose membrane, blocked with 5% BSA and probed with ab104238.

Secondary: Mouse monoclonal [SB62a] Secondary Antibody to Rabbit IgG light chain (HRP) ([ab99697](#)).

Band: 62kDa, non specific bands - 50 and 55kDa: We are unsure as to the identity of this extra band; PSPC1

Please note: All products are "FOR RESEARCH USE ONLY. NOT FOR USE IN DIAGNOSTIC PROCEDURES"

Our Abpromise to you: Quality guaranteed and expert technical support

- Replacement or refund for products not performing as stated on the datasheet
- Valid for 12 months from date of delivery
- Response to your inquiry within 24 hours
- We provide support in Chinese, English, French, German, Japanese and Spanish
- Extensive multi-media technical resources to help you
- We investigate all quality concerns to ensure our products perform to the highest standards

If the product does not perform as described on this datasheet, we will offer a refund or replacement. For full details of the Abpromise, please visit <https://www.abcam.co.jp/abpromise> or contact our technical team.

Terms and conditions

- Guarantee only valid for products bought direct from Abcam or one of our authorized distributors