


### Anti-PSME1 antibody [EPR10967(B)] ab155091

KO 評価済 リコンビナント RabMAb

★★★★★ [4 Abreviews](#) [4 References](#) [画像数 7](#)

#### 製品の概要

製品名	Anti-PSME1 antibody [EPR10967(B)]
製品の詳細	Rabbit monoclonal [EPR10967(B)] to PSME1
由来種	Rabbit
アプリケーション	<b>適用あり:</b> Indirect ELISA, WB, ICC/IF <b>適用なし:</b> Flow Cyt or IHC-P
種交差性	<b>交差種:</b> Human <b>交差が予測される動物種:</b> Mouse, Rat 
免疫原	Synthetic peptide within Human PSME1. The exact sequence is proprietary.
ポジティブ・コントロール	WB: HEK293T, MCF7 and Jurkat lysates. ICC/IF: MCF7 and HeLa cells.
特記事項	<p>This product is a recombinant monoclonal antibody, which offers several advantages including:</p> <ul style="list-style-type: none"> <li>- High batch-to-batch consistency and reproducibility</li> <li>- Improved sensitivity and specificity</li> <li>- Long-term security of supply</li> <li>- Animal-free production</li> </ul> <p>For more information <a href="#">see here</a>.</p> <p>Our RabMAb<sup>®</sup> technology is a patented hybridoma-based technology for making rabbit monoclonal antibodies. For details on our patents, please refer to <a href="#">RabMAb<sup>®</sup> patents</a>.</p>

#### 製品の特性

製品の状態	Liquid
保存方法	Shipped at 4°C. Store at -20°C.
バッファー	pH: 7.2 Preservative: 0.01% Sodium azide Constituents: 9% PBS, 40% Glycerol (glycerin, glycerine), 0.05% BSA, 50% Tissue culture supernatant
精製度	Tissue culture supernatant
ポリ/モノ	モノクローナル
クローン名	EPR10967(B)

アイソタイプIgG

アプリケーション

The Abpromise guarantee      **Abpromise保証は、** 次のテスト済みアプリケーションにおけるab155091の使用に適用されます  
アプリケーションノートには、推奨の開始希釈率がありますが、適切な希釈率につきましてはご検討ください。

アプリケーション	Abreviews	特記事項
Indirect ELISA		Use at an assay dependent concentration. Use at 31.25 ng /ml
WB	★★★★★ (3)	1/1000 - 1/10000. Predicted molecular weight: 29 kDa.
ICC/IF	★★★★★ (1)	1/500. <b>For unpurified use at 1/100 - 1/250.</b>

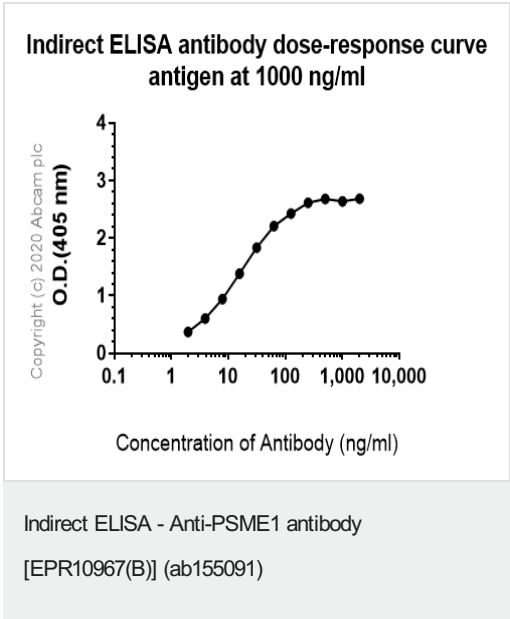
追加情報      Is unsuitable for Flow Cyt or IHC-P.

ターゲット情報

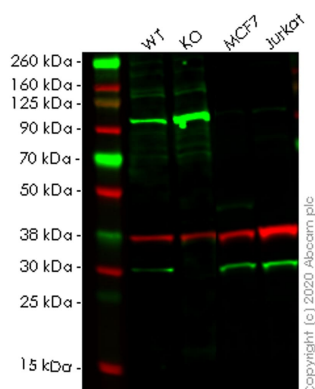
機能      Implicated in immunoproteasome assembly and required for efficient antigen processing. The PA28 activator complex enhances the generation of class I binding peptides by altering the cleavage pattern of the proteasome.

配列類似性      Belongs to the PA28 family.

画像



Indirect ELISA analysis of Human Proteasome activator complex subunit 1 using ab155091 at 1000 ng/mL dilution and secondary Alkaline Phosphatase-conjugated AffiniPure Goat Anti-Rabbit IgG (H+L) at 2500 ng/mL dilution



Western blot - Anti-PSME1 antibody [EPR10967(B)]  
(ab155091)

**All lanes :** Anti-PSME1 antibody [EPR10967(B)] (ab155091) at 1/1000 dilution

**Lane 1 :** Wild-type HEK-293T (Human epithelial cell line from embryonic kidney transformed with large T antigen) whole cell lysate

**Lane 2 :** PSME1 knockout HEK-293T (Human epithelial cell line from embryonic kidney transformed with large T antigen) whole cell lysate

**Lane 3 :** MCF7 (Human breast adenocarcinoma cell line) whole cell lysate

**Lane 4 :** Jurkat (Human T cell leukemia cell line from peripheral blood) whole cell lysate

Lysates/proteins at 20 µg per lane.

## Secondary

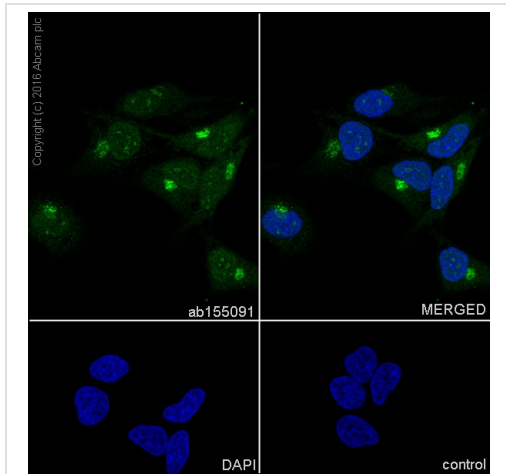
**All lanes :** Goat anti-Rabbit IgG H&L (IRDye® 800CW) preadsorbed ([ab216773](#)) at 1/10000 dilution

**Predicted band size:** 29 kDa

**Observed band size:** 29 kDa

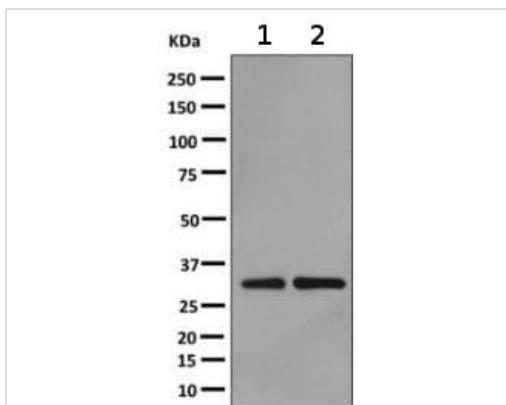
**Lanes 1-4:** Merged signal (red and green). Green - ab155091 observed at 29 kDa. Red - loading control [ab8245](#) observed at 36 kDa.

ab155091 Anti-PSME1 antibody [EPR10967(B)] was shown to specifically react with PSME1 in wild-type HEK-293T cells. Loss of signal was observed when knockout cell line [ab266192](#) (knockout cell lysate [ab257613](#)) was used. Wild-type and PSME1 knockout samples were subjected to SDS-PAGE. ab155091 and Anti-GAPDH antibody [6C5] - Loading Control ([ab8245](#)) were incubated overnight at 4°C at 1 in 1000 dilution and 1 in 20000 dilution respectively. Blots were developed with Goat anti-Rabbit IgG H&L (IRDye® 800CW) preadsorbed ([ab216773](#)) and Goat anti-Mouse IgG H&L (IRDye® 680RD) preadsorbed ([ab216776](#)) secondary antibodies at 1 in 20000 dilution for 1 hour at room temperature before imaging.



Immunocytochemistry/ Immunofluorescence - Anti-PSME1 antibody [EPR10967(B)] (ab155091)

Immunocytochemistry/Immunofluorescence analysis of HeLa (Human epithelial cell line from cervix adenocarcinoma) labeling PSME1 with purified ab155091 at 1/500 dilution. Cells were fixed with 4% PFA and permeabilized with 0.1% tritonX-100. **ab150077** Goat anti rabbit IgG (Alexa Fluor®488) at 1/1000 was used as the secondary antibody. Nuclei were counterstained with DAPI. PBS was used instead of the primary antibody as the negative control.



Western blot - Anti-PSME1 antibody [EPR10967(B)] (ab155091)

**All lanes :** Anti-PSME1 antibody [EPR10967(B)] (ab155091) at 1/1000 dilution

**Lane 1 :** MCF7 cell lysate

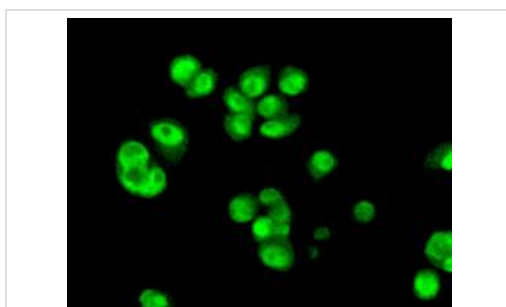
**Lane 2 :** Jurkat cell lysate

Lysates/proteins at 10 µg per lane.

**Secondary**

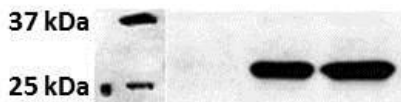
**All lanes :** Goat anti-rabbit HRP conjugated at 1/2000 dilution

**Predicted band size:** 29 kDa



Immunocytochemistry/ Immunofluorescence - Anti-PSME1 antibody [EPR10967(B)] (ab155091)

Immunofluorescent analysis of MCF7 cells labeling PSME1 with ab155091 at 1/100 dilution.



Western blot - Anti-PSME1 antibody [EPR10967(B)] (ab155091)

This image is courtesy of an anonymous Abreview

**All lanes :** Anti-PSME1 antibody [EPR10967(B)] (ab155091) at 1/1000 dilution

**All lanes :** Human prostate cancer whole tissue lysate

Lysates/proteins at 20 µg per lane.

#### Secondary

**All lanes :** HRP-conjugated goat anti-rabbit IgG at 1/5000 dilution

Developed using the ECL technique.

Performed under reducing conditions.

**Predicted band size:** 29 kDa

**Observed band size:** 29 kDa

**Exposure time:** 2 minutes

#### Why choose a recombinant antibody?



**Research with confidence**  
Consistent and reproducible results



**Long-term and scalable supply**  
Recombinant technology



**Success from the first experiment**  
Confirmed specificity



**Ethical standards compliant**  
Animal-free production

Anti-PSME1 antibody [EPR10967(B)] (ab155091)

**Please note:** All products are "FOR RESEARCH USE ONLY. NOT FOR USE IN DIAGNOSTIC PROCEDURES"

#### Our Abpromise to you: Quality guaranteed and expert technical support

- Replacement or refund for products not performing as stated on the datasheet
- Valid for 12 months from date of delivery
- Response to your inquiry within 24 hours
- We provide support in Chinese, English, French, German, Japanese and Spanish
- Extensive multi-media technical resources to help you

- We investigate all quality concerns to ensure our products perform to the highest standards

If the product does not perform as described on this datasheet, we will offer a refund or replacement. For full details of the Abpromise, please visit <https://www.abcam.co.jp/abpromise> or contact our technical team.

### **Terms and conditions**

---

- Guarantee only valid for products bought direct from Abcam or one of our authorized distributors