


Anti-PSMD7/Mov34 antibody ab11436

4 References [画像数 4](#)

製品の概要

製品名	Anti-PSMD7/Mov34 antibody
製品の詳細	Rabbit polyclonal to PSMD7/Mov34
由来種	Rabbit
アプリケーション	適用あり: ICC/IF, IHC-P, WB
種交差性	交差種: Human 交差が予測される動物種: Cow, Drosophila melanogaster, Zebrafish 
免疫原	Synthetic peptide corresponding to Human PSMD7/Mov34 aa 55-66. Sequence: AVPFDEDDKDDS (Peptide available as ab41795) Run BLAST with Run BLAST with
ポジティブ・コントロール	WB: K-562, Hep G2, HeLa, Jurkat, HEK-293, U-2 OS and A549 cell lysates. ICC: Hep G2 cells. IHC-P: Human skin tissue.
特記事項	The Life Science industry has been in the grips of a reproducibility crisis for a number of years. Abcam is leading the way in addressing this with our range of recombinant monoclonal antibodies and knockout edited cell lines for gold-standard validation. Please check that this product meets your needs before purchasing. If you have any questions, special requirements or concerns, please send us an inquiry and/or contact our Support team ahead of purchase. Recommended alternatives for this product can be found below, along with publications, customer reviews and Q&As

製品の特性

製品の状態	Liquid
保存方法	Shipped at 4°C. Store at +4°C short term (1-2 weeks). Upon delivery aliquot. Store at -20°C. Avoid freeze / thaw cycle.
バッファー	Preservative: 0.05% Sodium azide Constituents: 99% PBS, 0.1% BSA
精製度	Immunogen affinity purified
ポリ/モノ	ポリクローナル

アプリケーション

The Abpromise guarantee Abpromise保証は、次のテスト済みアプリケーションにおけるab11436の使用に適用されず
アプリケーションノートには、推奨の開始希釈率がありますが、適切な希釈率につきましてはご検討ください。

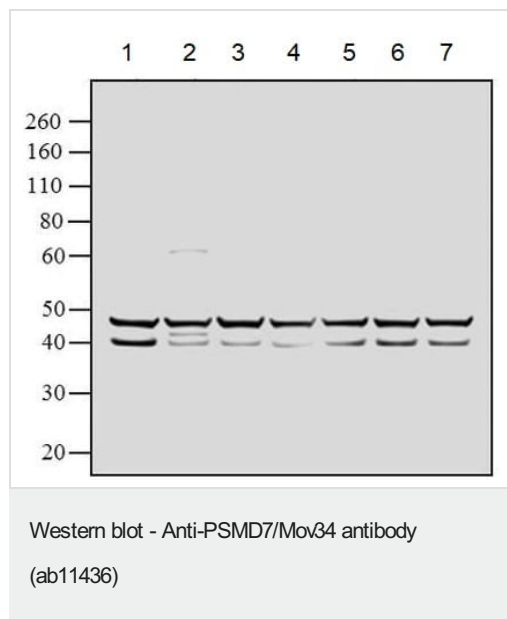
アプリケーション	Abreviews	特記事項
ICC/IF		Use a concentration of 5 µg/ml.
IHC-P		Use a concentration of 1 µg/ml. Perform heat mediated antigen retrieval with citrate buffer pH 6 before commencing with IHC staining protocol.
WB		Use a concentration of 1 µg/ml. Detects a band of approximately 37 kDa.

ターゲット情報

機能 Acts as a regulatory subunit of the 26S proteasome which is involved in the ATP-dependent degradation of ubiquitinated proteins.

配列類似性 Belongs to the peptidase M67A family.
Contains 1 MPN (JAB/Mov34) domain.

画像



All lanes : Anti-PSMD7/Mov34 antibody (ab11436) at 1 µg/ml

Lane 1 : K-652 whole cell lysate

Lane 2 : HepG2 whole cell lysate

Lane 3 : HeLa whole cell lysate

Lane 4 : Jurkat whole cell lysate

Lane 5 : HEK-293 whole cell lysate

Lane 6 : U-2 OS whole cell lysate

Lane 7 : A549 whole cell lysate

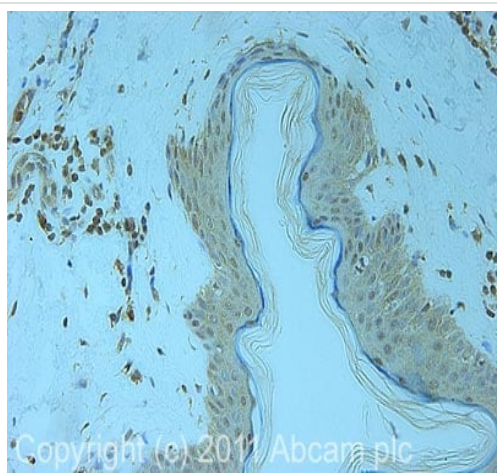
Lysates/proteins at 30 µg per lane.

Secondary

All lanes : Goat anti-Rabbit IgG (H+L) Superclonal™ Secondary Antibody, HRP conjugate at 0.25 µg/ml

Western blot analysis was performed on whole cell extracts (30 µg

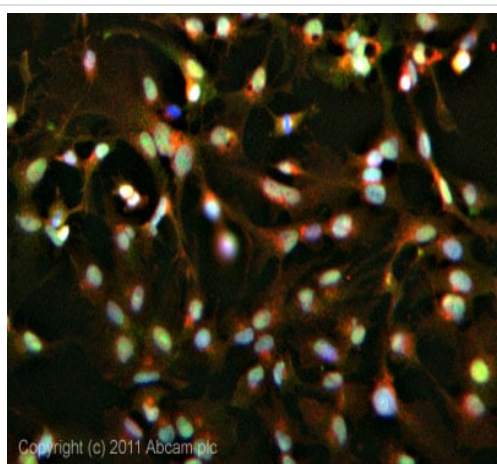
lysate). The blots were probed with ab11436 at 1 µg/ml and detected by chemiluminescence using Goat anti-Rabbit IgG (H+L) Superclonal™ Secondary Antibody, HRP conjugate (0.25 µg/mL, 1:4000 dilution). A 40 kDa band corresponding to PSMD7 was observed across the cell lines tested. In addition, a ~50 kDa band was observed, which could possibly represent the 26s Proteasome Subunit S5B. Known quantity of protein samples were electrophoresed and resolved proteins were then transferred onto a nitrocellulose membrane. The membrane was probed with the relevant primary and secondary Antibody following blocking with 5 % skimmed milk. Chemiluminescent detection was performed using Pierce™ ECL Western Blotting Substrate.



Immunohistochemistry (Formalin/PFA-fixed paraffin-embedded sections) - Anti-PSMD7/Mov34 antibody (ab11436)

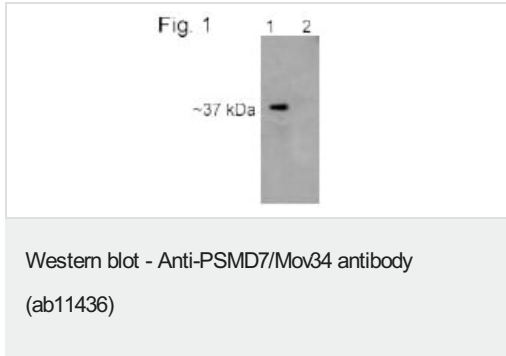
IHC image of ab11436 staining in human normal skin formalin fixed paraffin embedded tissue section, performed on a Leica Bond™ system using the standard protocol F. The section was pre-treated using heat mediated antigen retrieval with sodium citrate buffer (pH6, epitope retrieval solution 1) for 20 mins. The section was then incubated with ab11436, 1 µg/ml, for 15 mins at room temperature and detected using an HRP conjugated compact polymer system. DAB was used as the chromogen. The section was then counterstained with haematoxylin and mounted with DPX.

For other IHC staining systems (automated and non-automated) customers should optimize variable parameters such as antigen retrieval conditions, primary antibody concentration and antibody incubation times.



Immunocytochemistry/ Immunofluorescence - Anti-PSMD7/Mov34 antibody (ab11436)

ICC/IF image of ab11436 stained HepG2 cells. The cells were 4% formaldehyde fixed (10 min) and then incubated in 1%BSA / 10% normal goat serum / 0.3M glycine in 0.1% PBS-Tween for 1h to permeabilise the cells and block non-specific protein-protein interactions. The cells were then incubated with the antibody (ab11436, 5 µg/ml) overnight at +4°C. The secondary antibody (green) was [ab96899](#), DyLight® 488 goat anti-rabbit IgG (H+L) used at a 1/250 dilution for 1h. Alexa Fluor® 594 WGA was used to label plasma membranes (red) at a 1/200 dilution for 1h. DAPI was used to stain the cell nuclei (blue) at a concentration of 1.43 µM.



Western blot of PSDM7 in K562 cell lysate using ab11436.

Lane 1 is ab11436

Lane 2 is ab11436 pre-incubated with peptide

Please note: All products are "FOR RESEARCH USE ONLY. NOT FOR USE IN DIAGNOSTIC PROCEDURES"

Our Abpromise to you: Quality guaranteed and expert technical support

- Replacement or refund for products not performing as stated on the datasheet
- Valid for 12 months from date of delivery
- Response to your inquiry within 24 hours
- We provide support in Chinese, English, French, German, Japanese and Spanish
- Extensive multi-media technical resources to help you
- We investigate all quality concerns to ensure our products perform to the highest standards

If the product does not perform as described on this datasheet, we will offer a refund or replacement. For full details of the Abpromise, please visit <https://www.abcam.co.jp/abpromise> or contact our technical team.

Terms and conditions

- Guarantee only valid for products bought direct from Abcam or one of our authorized distributors