

# Anti-Proteasome subunit beta type 2/PSMB2 antibody [MCP165] ab22650

★★★★★ [1 Abreviews](#) [4 References](#) [画像数 4](#)

### 製品の概要

---

製品名	Anti-Proteasome subunit beta type 2/PSMB2 antibody [MCP165]
製品の詳細	Mouse monoclonal [MCP165] to Proteasome subunit beta type 2/PSMB2
由来種	Mouse
アプリケーション	<b>適用あり:</b> Flow Cyt, IHC-P, WB <b>適用なし:</b> IP
種交差性	<b>交差種:</b> Human
免疫原	Full length protein corresponding to Human Proteasome subunit beta type 2/PSMB2. Dinitrophenylated proteasomes Database link: <a href="#">P49721</a>
ポジティブ・コントロール	WB: HeLa cell lysate; human ciliary body lysate. IHC-P: Human lymphoid tissue. Flow cyt: HeLa cells.
特記事項	<p>The Life Science industry has been in the grips of a reproducibility crisis for a number of years. Abcam is leading the way in addressing this with our range of recombinant monoclonal antibodies and knockout edited cell lines for gold-standard validation. Please check that this product meets your needs before purchasing.</p> <p>If you have any questions, special requirements or concerns, please send us an inquiry and/or contact our Support team ahead of purchase. Recommended alternatives for this product can be found below, along with publications, customer reviews and Q&amp;As</p>

### 製品の特性

---

製品の状態	Liquid
保存方法	Shipped at 4°C. Store at +4°C short term (1-2 weeks). Upon delivery aliquot. Store at -20°C or -80°C. Avoid freeze / thaw cycle.
バッファー	Preservative: 0.032% Sodium azide Constituents: 0.316% Tris HCl, 0.58% Sodium chloride
精製度	Protein G purified
ポリ/モノ	モノクローナル
クローン名	MCP165

アプリケーション

**The Abpromise guarantee** **Abpromise保証は、次のテスト済みアプリケーションにおけるab22650の使用に適用されます**  
 アプリケーションノートには、推奨の開始希釈率がありますが、適切な希釈率につきましてはご確認ください。

アプリケーション	Abreviews	特記事項
Flow Cyt		Use 1 µg for 10 <sup>6</sup> cells. <b>ab170190</b> - Mouse monoclonal IgG1, is suitable for use as an isotype control with this antibody.
IHC-P		Use a concentration of 1 µg/ml. Perform heat mediated antigen retrieval with citrate buffer pH 6 before commencing with IHC staining protocol.
WB	★★★★★ (1)	1/1000. Detects a band of approximately 28 kDa (predicted molecular weight: 23 kDa).

**追加情報** Is unsuitable for IP.

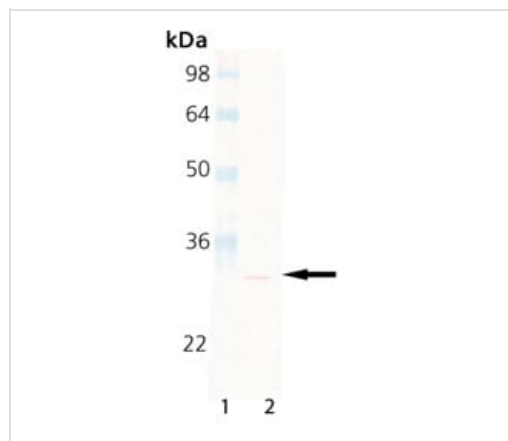
ターゲット情報

**機能** The proteasome is a multicatalytic proteinase complex which is characterized by its ability to cleave peptides with Arg, Phe, Tyr, Leu, and Glu adjacent to the leaving group at neutral or slightly basic pH. The proteasome has an ATP-dependent proteolytic activity. This subunit has a trypsin-like activity.

**配列類似性** Belongs to the peptidase T1B family.

**細胞内局在** Cytoplasm. Nucleus.

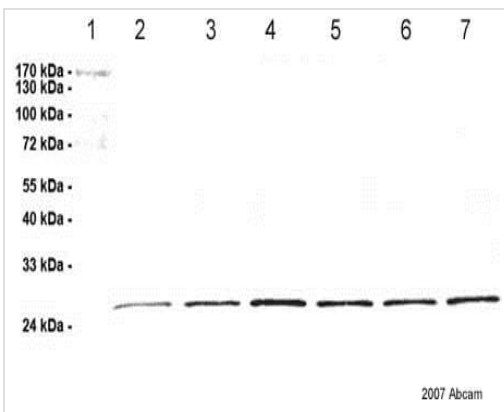
画像



Anti-Proteasome subunit beta type 2/PSMB2 antibody [MCP165] (ab22650) at 1/1000 dilution + HeLa cell lysate

**Predicted band size: 23 kDa**

Western blot - Anti-Proteasome subunit beta type 2/PSMB2 antibody [MCP165] (ab22650)



Western blot - Anti-Proteasome subunit beta type 2/PSMB2 antibody [MCP165] (ab22650)

This image is courtesy of an Abreview submitted by Dr Matthias Zenkel

**Lane 1 :** Protein Marker IV

**Lanes 2-7 :** Anti-Proteasome subunit beta type 2/PSMB2 antibody [MCP165] (ab22650) at 1/1000 dilution

**Lane 1 :** Protein Marker IV

**Lanes 2 & 4 & 6 :** Protein extract from ciliary body of diseased human donor at 2  $\mu$ g

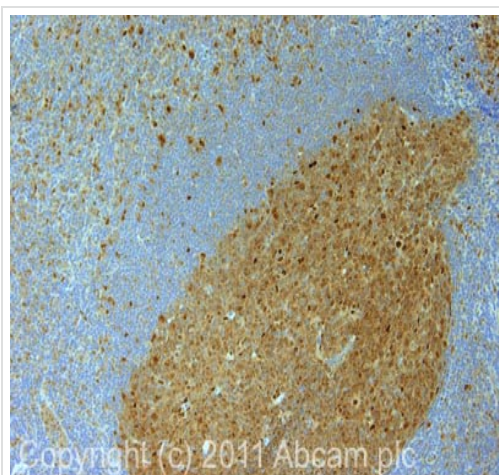
**Lanes 3 & 5 & 7 :** Protein extract from ciliary body of normal human donor at 2  $\mu$ g

### Secondary

**Lanes 2-7 :** HRP conjugated goat anti mouse antibody

**Predicted band size:** 23 kDa

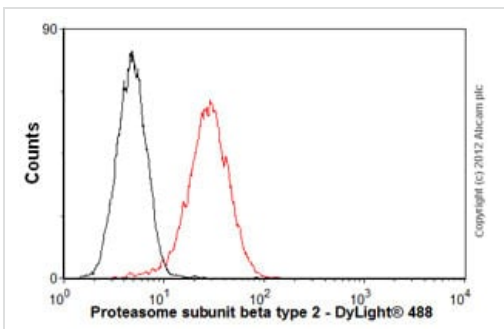
**Observed band size:** 27 kDa



Immunohistochemistry (Formalin/PFA-fixed paraffin-embedded sections) - Anti-Proteasome subunit beta type 2/PSMB2 antibody [MCP165] (ab22650)

IHC image of ab22650 staining in human normal lymphoid formalin fixed paraffin embedded tissue section, performed on a Leica Bond<sup>TM</sup> system using the standard protocol F. The section was pre-treated using heat mediated antigen retrieval with sodium citrate buffer (pH6, epitope retrieval solution 1) for 20 mins. The section was then incubated with ab22650, 1  $\mu$ g/ml, for 15 mins at room temperature and detected using an HRP conjugated compact polymer system. DAB was used as the chromogen. The section was then counterstained with haematoxylin and mounted with DPX.

For other IHC staining systems (automated and non-automated) customers should optimize variable parameters such as antigen retrieval conditions, primary antibody concentration and antibody incubation times.



Flow Cytometry - Anti-Proteasome subunit beta type 2/PSMB2 antibody [MCP165] (ab22650)

Overlay histogram showing HeLa cells stained with ab22650 (red line). The cells were fixed with 80% methanol (5 min) and then permeabilized with 0.1% PBS-Tween for 20 min. The cells were then incubated in 1x PBS / 10% normal goat serum / 0.3M glycine to block non-specific protein-protein interactions followed by the antibody (ab22650, 1  $\mu$ g/1x10<sup>6</sup> cells) for 30 min at 22°C. The secondary antibody used was DyLight® 488 goat anti-mouse IgG (H+L) ([ab96879](#)) at 1/500 dilution for 30 min at 22°C. Isotype control antibody (black line) was mouse IgG1 [ICIGG1] ([ab91353](#), 2  $\mu$ g/1x10<sup>6</sup> cells) used under the same conditions. Acquisition of

>5,000 events was performed.

**Please note:** All products are "FOR RESEARCH USE ONLY. NOT FOR USE IN DIAGNOSTIC PROCEDURES"

### **Our Abpromise to you: Quality guaranteed and expert technical support**

---

- Replacement or refund for products not performing as stated on the datasheet
- Valid for 12 months from date of delivery
- Response to your inquiry within 24 hours
  
- We provide support in Chinese, English, French, German, Japanese and Spanish
- Extensive multi-media technical resources to help you
- We investigate all quality concerns to ensure our products perform to the highest standards

If the product does not perform as described on this datasheet, we will offer a refund or replacement. For full details of the Abpromise, please visit <https://www.abcam.co.jp/abpromise> or contact our technical team.

### **Terms and conditions**

---

- Guarantee only valid for products bought direct from Abcam or one of our authorized distributors