


Anti-Proteasome subunit alpha type 6 antibody ab97563

1 References [画像数 8](#)

医薬用外劇物

製品の概要

製品名	Anti-Proteasome subunit alpha type 6 antibody
製品の詳細	Rabbit polyclonal to Proteasome subunit alpha type 6
由来種	Rabbit
アプリケーション	適用あり: WB, IHC-P, ICC/IF
種交差性	交差種: Mouse, Rat, Human 交差が予測される動物種: Pig, Zebrafish 
免疫原	Recombinant fragment corresponding to Human Proteasome subunit alpha type 6 aa 57-244. Database link: P60900
ポジティブ・コントロール	WB: 293T, A431, H1299, HeLa, HepG2 and MOLT4 cell lysates IF: A431 cells IHC-P: H1299 xenograft
特記事項	<p>The Life Science industry has been in the grips of a reproducibility crisis for a number of years. Abcam is leading the way in addressing this with our range of recombinant monoclonal antibodies and knockout edited cell lines for gold-standard validation. Please check that this product meets your needs before purchasing.</p> <p>If you have any questions, special requirements or concerns, please send us an inquiry and/or contact our Support team ahead of purchase. Recommended alternatives for this product can be found below, along with publications, customer reviews and Q&As</p>

製品の特性

製品の状態	Liquid
保存方法	Shipped at 4°C. Upon delivery aliquot and store at -20°C or -80°C. Avoid repeated freeze / thaw cycles.
バッファー	pH: 7.00 Preservative: 0.01% Thimerosal (merthiolate) Constituents: 1.21% Tris, 0.75% Glycine, 20% Glycerol (glycerin, glycerine)
精製度	Immunogen affinity purified
ポリ/モノ	ポリクローナル
アイソタイプ	IgG

アプリケーション

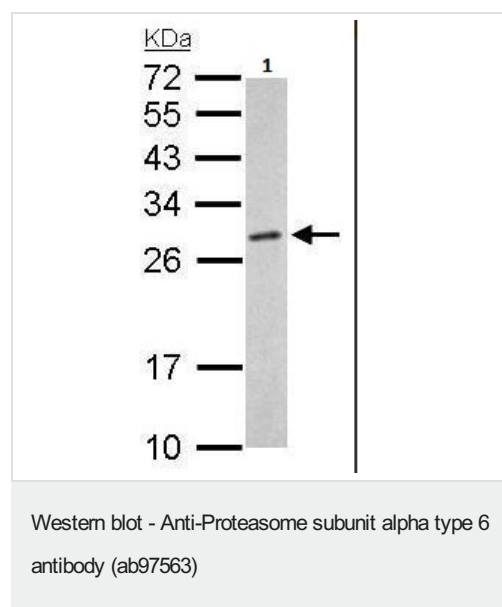
The Abpromise guarantee Abpromise保証は、次のテスト済みアプリケーションにおけるab97563の使用に適用されます
アプリケーションノートには、推奨の開始希釈率がありますが、適切な希釈率につきましてはご確認ください。

アプリケーション	Abreviews	特記事項
WB		1/500 - 1/3000. Predicted molecular weight: 27 kDa.
IHC-P		1/100 - 1/500.
ICC/IF		1/100 - 1/200.

ターゲット情報

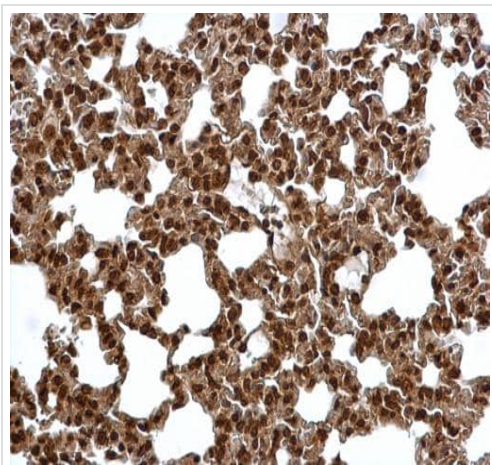
機能	The proteasome is a multicatalytic proteinase complex which is characterized by its ability to cleave peptides with Arg, Phe, Tyr, Leu, and Glu adjacent to the leaving group at neutral or slightly basic pH. The proteasome has an ATP-dependent proteolytic activity.
配列類似性	Belongs to the peptidase T1A family.
細胞内局在	Cytoplasm. Nucleus.

画像



Anti-Proteasome subunit alpha type 6 antibody (ab97563) at
1/1000 dilution + mouse liver lysate at 50 µg

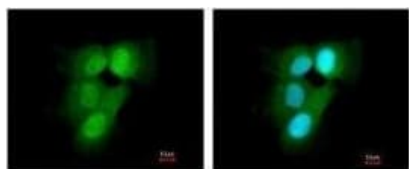
Predicted band size: 27 kDa



Immunohistochemistry (Formalin/PFA-fixed paraffin-embedded sections) - Anti-Proteasome subunit alpha type 6 antibody (ab97563)

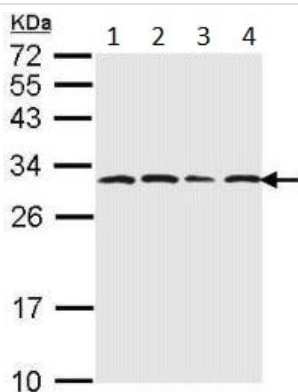
Immunohistochemical analysis of paraffin-embedded mouse lung tissue staining Proteasome subunit alpha type 6 with ab97563 at 1/500 dilution.

Antigen Retrieval: Trilogy™ (EDTA based, pH 8.0) buffer, 15min.



Immunocytochemistry/ Immunofluorescence - Anti-Proteasome subunit alpha type 6 antibody (ab97563)

ab97563, at a 1/200 dilution, staining Proteasome subunit alpha type 6 in paraformaldehyde-fixed A431 cells by Immunofluorescence analysis. Right image is merged with a DNA probe.



Western blot - Anti-Proteasome subunit alpha type 6 antibody (ab97563)

All lanes : Anti-Proteasome subunit alpha type 6 antibody (ab97563) at 1/1000 dilution

Lane 1 : 293T whole cell lysate

Lane 2 : A431 whole cell lysate

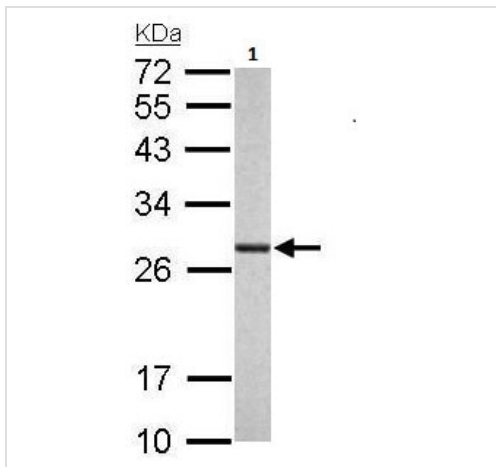
Lane 3 : H1299 whole cell lysate

Lane 4 : HeLa whole cell lysate

Lysates/proteins at 30 µg per lane.

Predicted band size: 27 kDa

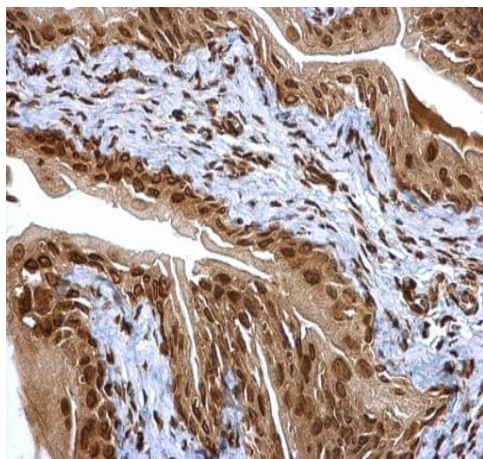
12% SDS PAGE



Western blot - Anti-Proteasome subunit alpha type 6 antibody (ab97563)

Anti-Proteasome subunit alpha type 6 antibody (ab97563) at 1/1000 dilution + rat liver lysate at 50 µg

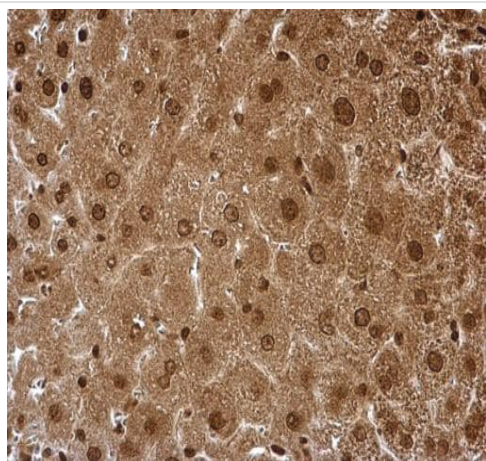
Predicted band size: 27 kDa



Immunohistochemical analysis of paraffin-embedded mouse urinary bladder tissue staining Proteasome subunit alpha type 6 with ab97563 at 1/500 dilution.

Antigen Retrieval: Trilogy™ (EDTA based, pH 8.0) buffer, 15min.

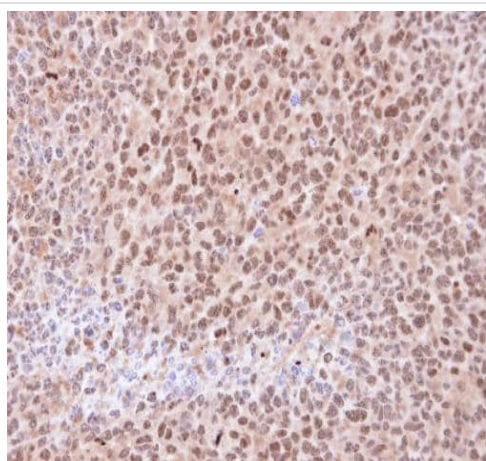
Immunohistochemistry (Formalin/PFA-fixed paraffin-embedded sections) - Anti-Proteasome subunit alpha type 6 antibody (ab97563)



Immunohistochemistry (Formalin/PFA-fixed paraffin-embedded sections) - Anti-Proteasome subunit alpha type 6 antibody (ab97563)

Immunohistochemical analysis of paraffin-embedded mouse liver tissue staining Proteasome subunit alpha type 6 with ab97563 at 1/500 dilution.

Antigen Retrieval: Trilogy™ (EDTA based, pH 8.0) buffer, 15min.



Immunohistochemistry (Formalin/PFA-fixed paraffin-embedded sections) - Anti-Proteasome subunit alpha type 6 antibody (ab97563)

ab97563, at a 1/100 dilution, staining Proteasome subunit alpha type 6 in paraffin-embedded H1299 xenograft by Immunohistochemical analysis.

Please note: All products are "FOR RESEARCH USE ONLY. NOT FOR USE IN DIAGNOSTIC PROCEDURES"

Our Abpromise to you: Quality guaranteed and expert technical support

- Replacement or refund for products not performing as stated on the datasheet
- Valid for 12 months from date of delivery
- Response to your inquiry within 24 hours
- We provide support in Chinese, English, French, German, Japanese and Spanish
- Extensive multi-media technical resources to help you
- We investigate all quality concerns to ensure our products perform to the highest standards

If the product does not perform as described on this datasheet, we will offer a refund or replacement. For full details of the Abpromise, please visit <https://www.abcam.co.jp/abpromise> or contact our technical team.

Terms and conditions

- Guarantee only valid for products bought direct from Abcam or one of our authorized distributors