


Anti-Proteasome 20S alpha 5/PSMA5 antibody [EPR5832] ab109387

リコンビナント **RabMAb**

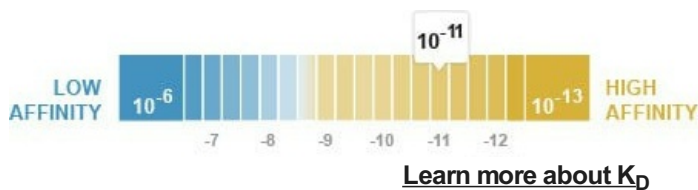
画像数 4

製品の概要

製品名	Anti-Proteasome 20S alpha 5/PSMA5 antibody [EPR5832]
製品の詳細	Rabbit monoclonal [EPR5832] to Proteasome 20S alpha 5/PSMA5
由来種	Rabbit
アプリケーション	適用あり: WB, IHC-P 適用なし: IP
種交差性	交差種: Human 交差が予測される動物種: Mouse, Rat 
免疫原	Synthetic peptide. This information is proprietary to Abcam and/or its suppliers.
ポジティブ・コントロール	WB: HepG2, 293T and JAR cell lysates. IHC-P: Human testis tissue
特記事項	This product is a recombinant monoclonal antibody, which offers several advantages including: <ul style="list-style-type: none"> - High batch-to-batch consistency and reproducibility - Improved sensitivity and specificity - Long-term security of supply - Animal-free production For more information see here . Our RabMAb [®] technology is a patented hybridoma-based technology for making rabbit monoclonal antibodies. For details on our patents, please refer to RabMAb[®] patents .

製品の特性

製品の状態	Liquid
保存方法	Shipped at 4°C. Store at -20°C. Stable for 12 months at -20°C.
解離定数 (K _D 値)	K _D = 3.22 x 10 ⁻¹¹ M



バッファー	pH: 7.20 Preservative: 0.05% Sodium azide Constituents: 0.1% BSA, 40% Glycerol (glycerin, glycerine), 9.85% Tris glycine, 50% Tissue culture supernatant
精製度	Protein A purified
ポリ/モノ	モノクローナル
クローン名	EPR5832
アイソタイプ	IgG

アプリケーション

The Abpromise guarantee Abpromise保証は、 次のテスト済みアプリケーションにおけるab109387の使用に適用されます
アプリケーションノートには、推奨の開始希釈率がありますが、適切な希釈率につきましてはご検討ください。

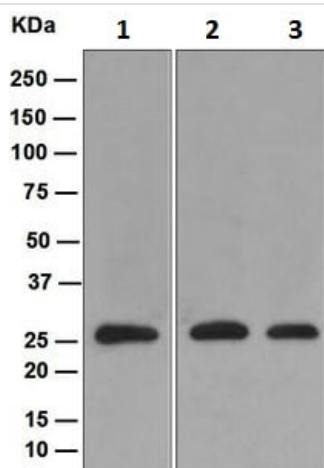
アプリケーション	Abreviews	特記事項
WB		1/1000 - 1/10000. Predicted molecular weight: 26 kDa.
IHC-P		1/100 - 1/250. Perform heat mediated antigen retrieval via the pressure cooker method before commencing with IHC staining protocol. Heat up to 98 degrees C, below boiling, and then let cool for 10-20 min.

追加情報 Is unsuitable for IP.

ターゲット情報

機能	The proteasome is a multicatalytic proteinase complex which is characterized by its ability to cleave peptides with Arg, Phe, Tyr, Leu, and Glu adjacent to the leaving group at neutral or slightly basic pH. The proteasome has an ATP-dependent proteolytic activity.
組織特異性	Expressed in fetal brain (at protein level).
配列類似性	Belongs to the peptidase T1A family.
細胞内局在	Cytoplasm. Nucleus.

画像



Western blot - Anti-Proteasome 20S alpha 5/PSMA5 antibody [EPR5832] (ab109387)

All lanes : Anti-Proteasome 20S alpha 5/PSMA5 antibody [EPR5832] (ab109387) at 1/1000 dilution

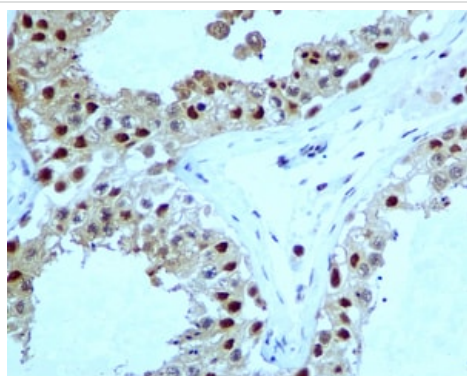
Lane 1 : HepG2 cell lysate

Lane 2 : 293T (Human embryonic kidney epithelial cell) cell lysate

Lane 3 : JAR cell lysate

Lysates/proteins at 10 µg per lane.

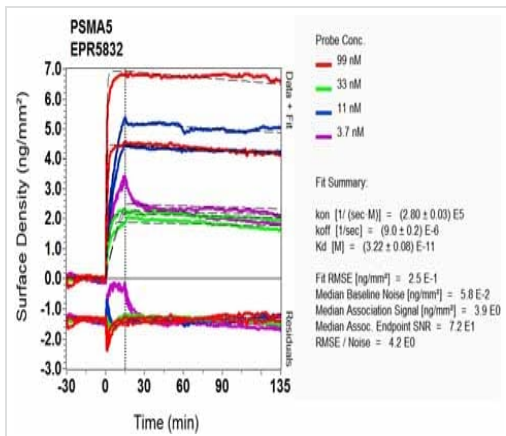
Predicted band size: 26 kDa



Immunohistochemistry (Formalin/PFA-fixed paraffin-embedded sections) - Anti-Proteasome 20S alpha 5/PSMA5 antibody [EPR5832] (ab109387)

Immunohistochemical analysis of paraffin-embedded Human testis tissue using 1/100 ab109387.

Perform heat mediated antigen retrieval via the pressure cooker method before commencing with IHC staining protocol.



SPR Scanning - Anti-Proteasome 20S alpha
5/PSMA5 antibody [EPR5832] (ab109387)

Equilibrium dissociation constant (K_D)

Learn more about K_D

[Click here to learn more about \$K_D\$](#)

Why choose a recombinant antibody?



Research with confidence
Consistent and reproducible results



Long-term and scalable supply
Recombinant technology



Success from the first experiment
Confirmed specificity



Ethical standards compliant
Animal-free production

Anti-Proteasome 20S alpha 5/PSMA5 antibody
[EPR5832] (ab109387)

Please note: All products are "FOR RESEARCH USE ONLY. NOT FOR USE IN DIAGNOSTIC PROCEDURES"

Our Abpromise to you: Quality guaranteed and expert technical support

- Replacement or refund for products not performing as stated on the datasheet
- Valid for 12 months from date of delivery
- Response to your inquiry within 24 hours
- We provide support in Chinese, English, French, German, Japanese and Spanish

- Extensive multi-media technical resources to help you
- We investigate all quality concerns to ensure our products perform to the highest standards

If the product does not perform as described on this datasheet, we will offer a refund or replacement. For full details of the Abpromise, please visit <https://www.abcam.co.jp/abpromise> or contact our technical team.

Terms and conditions

- Guarantee only valid for products bought direct from Abcam or one of our authorized distributors