

# Anti-Prosurfactant Protein C antibody [EPR19839-8] - BSA and Azide free ab270526

リコンビナント RabMAb

画像数 5

### 製品の概要

製品名	Anti-Prosurfactant Protein C antibody [EPR19839-8] - BSA and Azide free
製品の詳細	Rabbit monoclonal [EPR19839-8] to Prosurfactant Protein C - BSA and Azide free
由来種	Rabbit
アプリケーション	<b>適用あり:</b> IHC-Fr, WB, IP, IHC-P
種交差性	<b>交差種:</b> Mouse
免疫原	Synthetic peptide. This information is proprietary to Abcam and/or its suppliers.
ポジティブ・コントロール	WB: Mouse lung tissue lysate. IHC-P: Mouse lung tissue. IHC-Fr: Mouse lung tissue. IP: Mouse lung tissue lysate.
特記事項	<p>ab270526 is the carrier-free version of <a href="#">ab270521</a>.</p> <p>Our <b>carrier-free</b> antibodies are typically supplied in a PBS-only formulation, purified and free of BSA, sodium azide and glycerol. The carrier-free buffer and high concentration allow for increased conjugation efficiency.</p> <p>This conjugation-ready format is designed for use with fluorochromes, metal isotopes, oligonucleotides, and enzymes, which makes them ideal for antibody labelling, functional and cell-based assays, flow-based assays (e.g. mass cytometry) and Multiplex Imaging applications.</p> <p>Use our <b>conjugation kits</b> for antibody conjugates that are ready-to-use in as little as 20 minutes with &lt;1 minute hands-on-time and 100% antibody recovery: available for fluorescent dyes, HRP, biotin and gold.</p> <p>This product is compatible with the Maxpar<sup>®</sup> Antibody Labeling Kit from Fluidigm, without the need for antibody preparation. Maxpar<sup>®</sup> is a trademark of Fluidigm Canada Inc.</p> <p>This product is a recombinant monoclonal antibody, which offers several advantages including:</p> <ul style="list-style-type: none"> <li>- High batch-to-batch consistency and reproducibility</li> <li>- Improved sensitivity and specificity</li> <li>- Long-term security of supply</li> <li>- Animal-free production</li> </ul> <p>For more information <a href="#">see here</a>.</p> <p>Our RabMAb<sup>®</sup> technology is a patented hybridoma-based technology for making rabbit monoclonal antibodies. For details on our patents, please refer to <a href="#">RabMAb<sup>®</sup> patents</a>.</p>

## 製品の特性

製品の状態	Liquid
保存方法	Shipped at 4°C. Store at +4°C. Do Not Freeze.
バッファー	pH: 7.2 Constituent: PBS
キャリア・フリー	はい
精製度	Protein A purified
ポリ/モノ	モノクローナル
クローン名	EPR19839-8
アイソタイプ	IgG

## アプリケーション

**The Abpromise guarantee**      **Abpromise保証は、次のテスト済みアプリケーションにおけるab270526の使用に適用されます**  
アプリケーションノートには、推奨の開始希釈率がありますが、適切な希釈率につきましてはご検討ください。

アプリケーション	Abreviews	特記事項
IHC-Fr		Use at an assay dependent concentration. Heat mediated antigen retrieval using sodium citrate buffer (10mM citrate pH 6.0 + 0.05% Tween-20).
WB		Use at an assay dependent concentration. Detects a band of approximately 21 kDa (predicted molecular weight: 21 kDa).
IP		Use at an assay dependent concentration.
IHC-P		Use at an assay dependent concentration. Perform heat mediated antigen retrieval with citrate buffer pH 6 before commencing with IHC staining protocol.

## ターゲット情報

機能	Pulmonary surfactant associated proteins promote alveolar stability by lowering the surface tension at the air-liquid interface in the peripheral air spaces.
関連疾患	Defects in SFTPC are the cause of pulmonary surfactant metabolism dysfunction type 2 (SMDP2) [MIM:610913]; also called pulmonary alveolar proteinosis due to surfactant protein C deficiency. A rare disease associated with progressive respiratory insufficiency and lung disease with a variable clinical course, due to impaired surfactant homeostasis. It is characterized by alveolar filling with floccular material that stains positive using the periodic acid-Schiff method and is derived from surfactant phospholipids and protein components. Excessive lipoproteins accumulation in the alveoli results in severe respiratory distress. Genetic variations in SFTPC are a cause of susceptibility to respiratory distress syndrome in premature infants (RDS) [MIM:267450]; also known as RDS in prematurity. RDS is a lung disease affecting usually premature newborn infants. It is characterized by deficient gas exchange, diffuse atelectasis, high-permeability lung edema and fibrin-rich alveolar deposits called 'hyaline

membranes'.

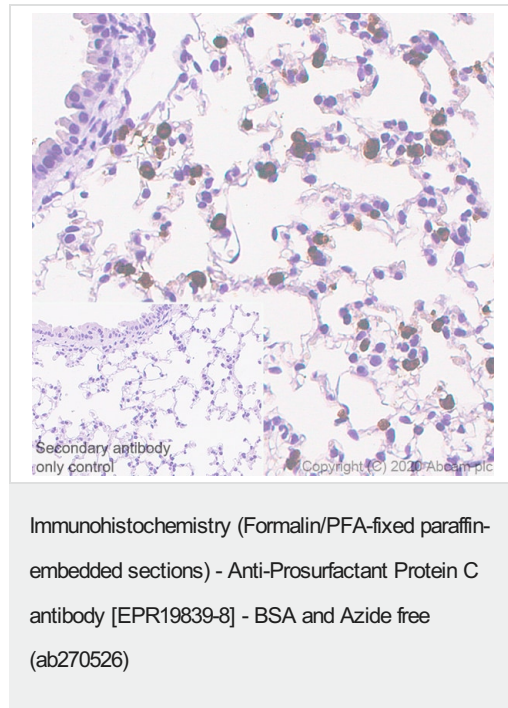
## 配列類似性

Contains 1 BRICHOS domain.

## 細胞内局在

Secreted > extracellular space > surface film.

## 画像

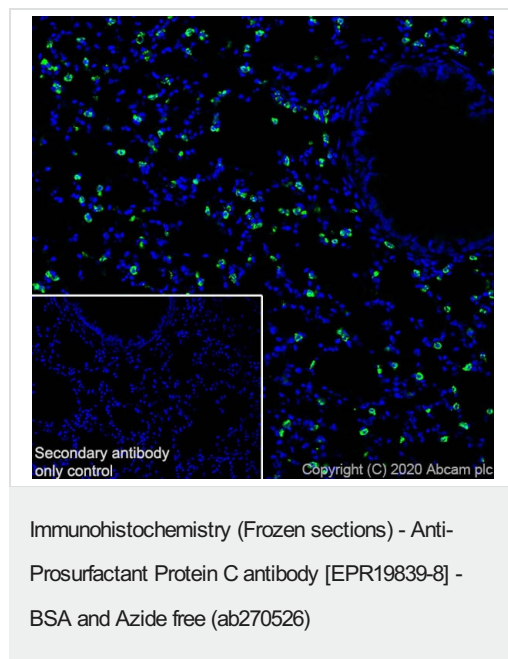


Immunohistochemical analysis of paraffin-embedded Mouse lung tissue labeling Prosurfactant Protein C with [ab270521](#) at 1/2000 dilution followed by a ready to use Rabbit specific IHC polymer detection kit HRP/DAB ([ab209101](#)). Positive staining on Type II alveolar cells in mouse lung. The section was incubated with [ab270521](#) for 30 mins at room temperature. The immunostaining was performed on a Leica Biosystems BOND<sup>®</sup> RX instrument. Counterstained with Hematoxylin.

Secondary antibody only control: Secondary antibody is a ready to use Rabbit specific IHC polymer detection kit HRP/DAB ([ab209101](#)).

Heat mediated antigen retrieval with Citrate buffer (pH 6.0, epitope retrieval solution 1) for 20 mins.

This data was developed using the same antibody clone in a different buffer formulation containing PBS, BSA, glycerol, and sodium azide ([ab270521](#)).

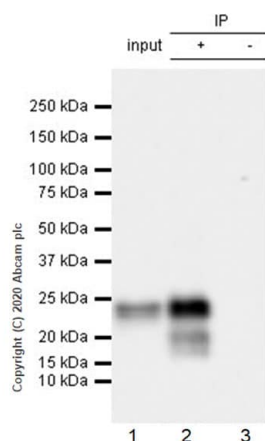


Immunohistochemical analysis of 4% PFA-fixed, 0.2% Triton X-100 permeabilized frozen Mouse lung tissue labeling Prosurfactant Protein C with [ab270521](#) at 1/100 dilution followed by [ab150077](#) AlexaFluor<sup>®</sup>488 Goat anti-Rabbit secondary at 1/1000 dilution (Green). Positive staining on mouse lung is observed. The nuclear counterstain was DAPI (Blue).

Secondary antibody control: Secondary antibody is [ab150077](#) AlexaFluor<sup>®</sup>488 Goat anti-Rabbit secondary at 1/1000 dilution.

Heat mediated antigen retrieval using sodium citrate buffer (10mM citrate pH 6.0 + 0.05% Tween-20).

This data was developed using the same antibody clone in a different buffer formulation containing PBS, BSA, glycerol, and sodium azide ([ab270521](#)).



Immunoprecipitation - Anti-Prosulfactant Protein C antibody [EPR19839-8] - BSA and Azide free (ab270526)

Prosulfactant Protein C was immunoprecipitated from 0.35 mg Mouse lung tissue lysate 1 with **ab270521** at 1/30 dilution. Western blot was performed on the immunoprecipitate using **ab270521** at 1/1000 dilution. VeriBlot for IP Detection Reagent (HRP) (**ab131366**) was used at 1/5000 dilution.

Lane 1: Mouse lung tissue lysate 10 ug.

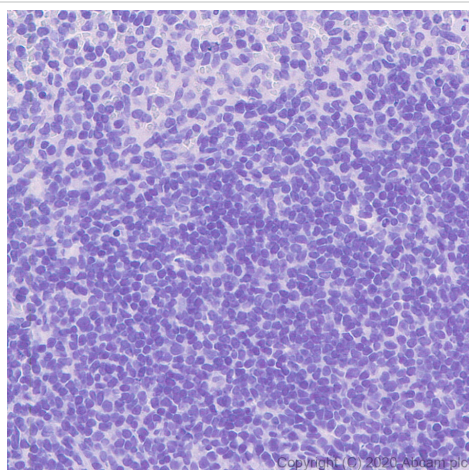
Lane 2: **ab270521** IP in Mouse lung tissue lysate.

Lane 3: Rabbit monoclonal IgG (**ab172730**) instead of **ab270521** in mouse lung tissue lysate.

Blocking and dilution buffer and concentration: 5% NFDm/TBST.

Exposure time: 6 seconds.

This data was developed using the same antibody clone in a different buffer formulation containing PBS, BSA, glycerol, and sodium azide (**ab270521**).



Immunohistochemistry (Formalin/PFA-fixed paraffin-embedded sections) - Anti-Prosulfactant Protein C antibody [EPR19839-8] - BSA and Azide free (ab270526)

Immunohistochemical analysis of paraffin-embedded Mouse spleen tissue labeling Prosulfactant Protein C with **ab270521** at 1/2000 dilution followed by a ready to use Rabbit specific IHC polymer detection kit HRP/DAB (**ab209101**). The Pulmonary surfactant-associated protein C is a peptide secreted by the alveolar type II pneumocytes of the lung (PMID: 16769199). **Negative control:** No staining on mouse spleen. The section was incubated with **ab270521** for 30 mins at room temperature. The immunostaining was performed on a Leica Biosystems BOND® RX instrument. Counterstained with Hematoxylin.

Secondary antibody only control: Secondary antibody is a ready to use Rabbit specific IHC polymer detection kit HRP/DAB (**ab209101**).

Heat mediated antigen retrieval with Citrate buffer (pH 6.0, epitope retrieval solution 1) for 20 mins.





Secondary antibody only control: Secondary antibody is a ready to use Rabbit specific IHC polymer detection kit HRP/DAB (**ab209101**).

Heat mediated antigen retrieval with Citrate buffer (pH 6.0, epitope retrieval solution 1) for 20 mins

This data was developed using the same antibody clone in a different buffer formulation containing PBS, BSA, glycerol, and

sodium azide (**ab270521**).

Why choose a recombinant antibody?

 <b>Research with confidence</b> Consistent and reproducible results	 <b>Long-term and scalable supply</b> Recombinant technology
 <b>Success from the first experiment</b> Confirmed specificity	 <b>Ethical standards compliant</b> Animal-free production

Anti-Prosurfactant Protein C antibody [EPR19839-8]  
- BSA and Azide free (ab270526)

**Please note:** All products are "FOR RESEARCH USE ONLY. NOT FOR USE IN DIAGNOSTIC PROCEDURES"

### Our Abpromise to you: Quality guaranteed and expert technical support

---

- Replacement or refund for products not performing as stated on the datasheet
- Valid for 12 months from date of delivery
- Response to your inquiry within 24 hours
- We provide support in Chinese, English, French, German, Japanese and Spanish
- Extensive multi-media technical resources to help you
- We investigate all quality concerns to ensure our products perform to the highest standards

If the product does not perform as described on this datasheet, we will offer a refund or replacement. For full details of the Abpromise, please visit <https://www.abcam.co.jp/abpromise> or contact our technical team.

### Terms and conditions

---

- Guarantee only valid for products bought direct from Abcam or one of our authorized distributors