

# Anti-Prostate Specific Antigen antibody [8301] ab403

★★★★★ [1 Abreviews](#) [5 References](#) [画像数 1](#)

### 製品の概要

製品名	Anti-Prostate Specific Antigen antibody [8301]
製品の詳細	Mouse monoclonal [8301] to Prostate Specific Antigen
由来種	Mouse
特異性	Human prostate-specific antigen - 100% PSA/alpha-1-ACT-complex - 59% Kallikrein - <0.04% PAP - <0.04% Cross-reactivity values have been calculated on weight/weight basis using 125-I-labelled human human prostate-specific antigen in assay. They can vary because of the presence of antigen or related impurities in protein preparations used for cross reactivity assays. Affinity constant: $1 \times 10^{11}$ l/mol human prostate-specific antigen.
アプリケーション	<b>適用あり:</b> IHC-P
種交差性	<b>交差種:</b> Human
免疫原	native protein (purified), corresponding to amino acids 158-163 of Human Prostate Specific Antigen
特記事項	<p>The Life Science industry has been in the grips of a reproducibility crisis for a number of years. Abcam is leading the way in addressing this with our range of recombinant monoclonal antibodies and knockout edited cell lines for gold-standard validation. Please check that this product meets your needs before purchasing.</p> <p>If you have any questions, special requirements or concerns, please send us an inquiry and/or contact our Support team ahead of purchase. Recommended alternatives for this product can be found below, along with publications, customer reviews and Q&amp;As</p>

### 製品の特性

製品の状態	Liquid
保存方法	Shipped at 4°C. Store at +4°C short term (1-2 weeks). Store at -20°C or -80°C. Avoid freeze / thaw cycle.
バッファー	<p>pH: 6.00</p> <p>Preservative: 0.095% Sodium azide</p> <p>Constituents: 0.335% PBS, 1.0878% Sodium citrate, 0.9% Sodium chloride</p>
精製度	Protein A purified
ポリ/モノ	モノクローナル
クローン名	8301

ミエローマ	unknown
アイソタイプ	IgG1
軽鎖の種類	unknown

## アプリケーション

**The Abpromise guarantee** **Abpromise保証は、次のテスト済みアプリケーションにおけるab403の使用に適用されます**  
アプリケーションノートには、推奨の開始希釈率がありますが、適切な希釈率につきましてはご確認ください。

アプリケーション	Abreviews	特記事項
IHC-P		

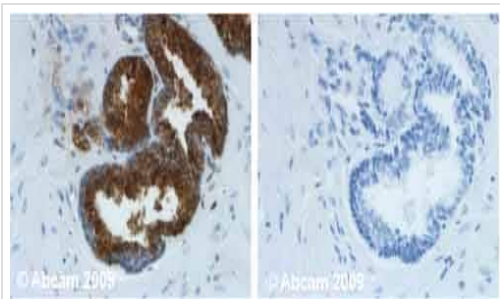
## 追加情報

ELISA: Use at an assay dependant concentration.  
IHC-P: Use at an assay dependent dilution.  
RIA: Use at an assay dependant concentration.  
Nanowires array: 1/50 - 1/500.  
Not tested in other applications.  
Optimal dilutions/concentrations should be determined by the end user.

## ターゲット情報

機能	Hydrolyzes semenogelin-1 thus leading to the liquefaction of the seminal coagulum.
配列類似性	Belongs to the peptidase S1 family. Kallikrein subfamily. Contains 1 peptidase S1 domain.
細胞内局在	Secreted.

## 画像



Immunohistochemistry (Formalin/PFA-fixed paraffin-embedded sections) - Anti-Prostate Specific Antigen antibody [8301] (ab403)

Human normal prostate. Staining is localised as cytoplasmic and secreted. Left panel: with primary antibody at 1 ug/ml. Right panel: isotype control. Sections were stained using an automated system, at room temperature: sections were rehydrated and antigen retrieved with buffers (citrate pH 6.1) in a PT Link. Slides were peroxidase blocked in 3% H<sub>2</sub>O<sub>2</sub> in methanol for 10 mins. They were then blocked with protein block for 10 minutes (containing casein 0.25% in PBS) then incubated with primary antibody for 20 min and detected for 30 minutes. Colorimetric detection was completed with Diaminobenzidine for 5 minutes. Slides were counterstained with Haematoxylin and coverslipped under DePeX. Please note that for manual staining we recommend to optimize the primary antibody concentration and incubation time (overnight incubation), and amplification may be required.

**Please note:** All products are "FOR RESEARCH USE ONLY. NOT FOR USE IN DIAGNOSTIC PROCEDURES"

### **Our Abpromise to you: Quality guaranteed and expert technical support**

---

- Replacement or refund for products not performing as stated on the datasheet
- Valid for 12 months from date of delivery
- Response to your inquiry within 24 hours
  
- We provide support in Chinese, English, French, German, Japanese and Spanish
- Extensive multi-media technical resources to help you
- We investigate all quality concerns to ensure our products perform to the highest standards

If the product does not perform as described on this datasheet, we will offer a refund or replacement. For full details of the Abpromise, please visit <https://www.abcam.co.jp/abpromise> or contact our technical team.

### **Terms and conditions**

---

- Guarantee only valid for products bought direct from Abcam or one of our authorized distributors