

# Anti-Prolactin/PRL antibody [EPR19386] ab183967

リコンビナント RabMAb

## 2 References 画像数 9

### 製品の概要

製品名	Anti-Prolactin/PRL antibody [EPR19386]
製品の詳細	Rabbit monoclonal [EPR19386] to Prolactin/PRL
由来種	Rabbit
アプリケーション	<b>適用あり:</b> WB, IHC-Fr, IHC-P, ICC/IF
種交差性	<b>交差種:</b> Mouse, Rat
免疫原	Synthetic peptide. This information is proprietary to Abcam and/or its suppliers.
ポジティブ・コントロール	WB: Mouse and rat pituitary lysates. IHC-P: Mouse adenohypophysis tissue. IHC-Fr: Mouse pituitary tissue. ICC/IF: HeLa cells transfected with Myc tagged Prolactin/PRL.
特記事項	<p>This product is a recombinant monoclonal antibody, which offers several advantages including:</p> <ul style="list-style-type: none"><li>- High batch-to-batch consistency and reproducibility</li><li>- Improved sensitivity and specificity</li><li>- Long-term security of supply</li><li>- Animal-free production</li></ul> <p>For more information <a href="#">see here</a>.</p> <p>Our RabMAb<sup>®</sup> technology is a patented hybridoma-based technology for making rabbit monoclonal antibodies. For details on our patents, please refer to <a href="#">RabMAb<sup>®</sup> patents</a>.</p>

### 製品の特性

製品の状態	Liquid
保存方法	Shipped at 4°C. Store at +4°C short term (1-2 weeks). Upon delivery aliquot. Store at -20°C long term. Avoid freeze / thaw cycle.
バッファー	pH: 7.2 Preservative: 0.01% Sodium azide Constituents: PBS, 0.05% BSA, 40% Glycerol
精製度	Protein A purified
ポリ/モノ	モノクローナル
クローン名	EPR19386
アイソタイプ	IgG

## アプリケーション

**The Abpromise guarantee** Abpromise保証は、次のテスト済みアプリケーションにおけるab183967の使用に適用されます  
アプリケーションノートには、推奨の開始希釈率がありますが、適切な希釈率につきましてはご検討ください。

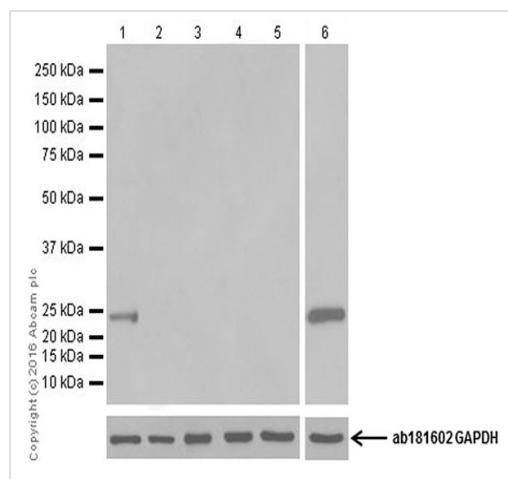
アプリケーション	Abreviews	特記事項
WB		1/1000. Detects a band of approximately 25 kDa (predicted molecular weight: 25 kDa).
IHC-Fr		1/200. Perform antigen retrieval with heated citrate solution (10mM citrate pH 6.0 + 0.05% Tween-20).
IHC-P		1/8000. Perform heat mediated antigen retrieval with Tris/EDTA buffer pH 9.0 before commencing with IHC staining protocol.
ICC/IF		1/100.

## ターゲット情報

**関連性** Various hormones are secreted from the anterior pituitary during development and growth. Prolactin is a growth factor secreted by the anterior pituitary that is necessary for the proliferation and differentiation of the mammary glands.

**細胞内局在** Secreted

## 画像



Western blot - Anti-Prolactin/PRL antibody  
[EPR19386] (ab183967)

**All lanes** : Anti-Prolactin/PRL antibody [EPR19386] (ab183967) at 1/1000 dilution

**Lane 1** : Mouse pituitary lysate

**Lane 2** : Mouse uterus lysate

**Lane 3** : Rat heart lysate

**Lane 4** : C6 (Rat glial tumor cell line) whole cell lysate

**Lane 5** : NIH/3T3 (Mouse embryonic fibroblast cell line) whole cell lysate

**Lane 6** : Rat pituitary lysate

Lysates/proteins at 20 µg per lane.

### Secondary

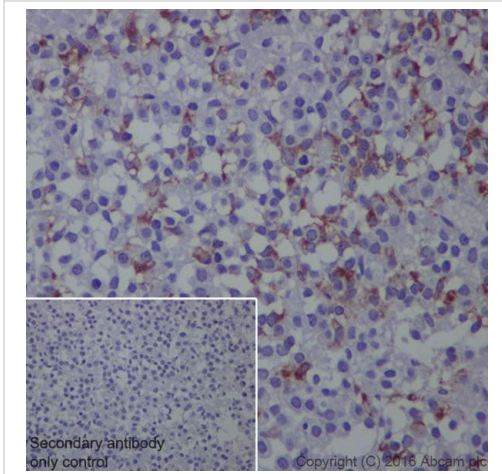
**All lanes** : Goat Anti-Rabbit IgG H&L (HRP) (**ab97051**) at 1/100000 dilution

**Predicted band size:** 25 kDa

**Observed band size:** 25 kDa

Blocking/Dilution buffer: 5% NFDM/TBST.

Exposure time: Lane 1, 2, 3, 4 and 5: 5 seconds; Lane 6: 1 second.

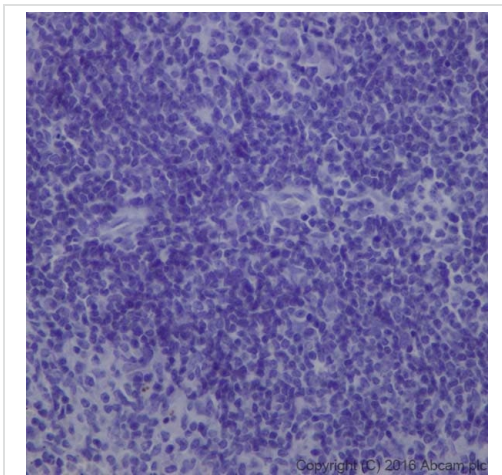


Immunohistochemistry (Formalin/PFA-fixed paraffin-embedded sections) - Anti-Prolactin/PRL antibody [EPR19386] (ab183967)

Immunohistochemical analysis of paraffin-embedded Mouse adenohypophysis tissue labeling Prolactin/PRL with ab183967 at 1/8000 dilution, followed by Goat Anti-Rabbit IgG H&L (HRP) (**ab97051**) at 1/500 dilution. Cytoplasm staining on mouse adenohypophysis was observed. Counter stained with Hematoxylin.

Secondary antibody only control: Used PBS instead of primary antibody, secondary antibody is **ab97051** at 1/500 dilution.

Perform heat mediated antigen retrieval with Tris/EDTA buffer pH 9.0 before commencing with IHC staining protocol.



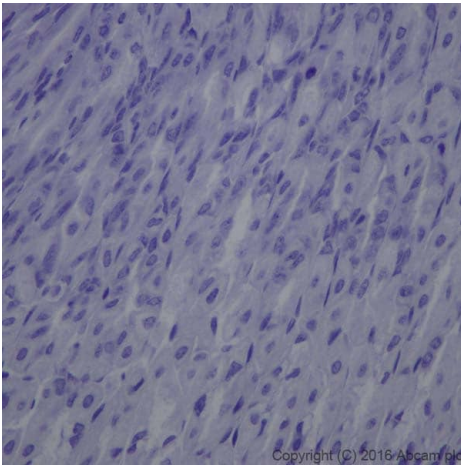
Immunohistochemistry (Formalin/PFA-fixed paraffin-embedded sections) - Anti-Prolactin/PRL antibody [EPR19386] (ab183967)

Immunohistochemical analysis of paraffin-embedded Mouse spleen tissue labeling Prolactin/PRL with ab183967 at 1/8000 dilution, followed by Goat Anti-Rabbit IgG H&L (HRP) (**ab97051**) at 1/500 dilution. No staining was observed on mouse spleen.

Counter stained with Hematoxylin.

Secondary antibody only control: Used PBS instead of primary antibody, secondary antibody is **ab97051** at 1/500 dilution.

Perform heat mediated antigen retrieval with Tris/EDTA buffer pH 9.0 before commencing with IHC staining protocol.



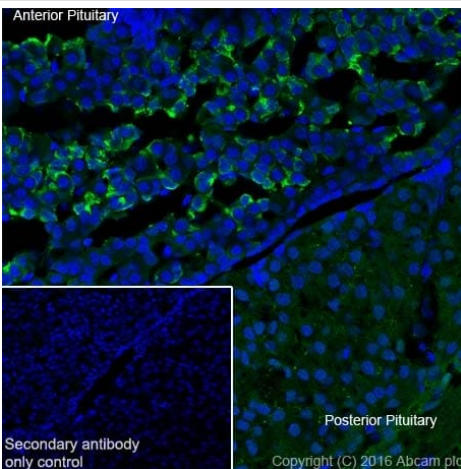
Immunohistochemistry (Formalin/PFA-fixed paraffin-embedded sections) - Anti-Prolactin/PRL antibody [EPR19386] (ab183967)

Immunohistochemical analysis of paraffin-embedded Mouse stomach tissue labeling Prolactin/PRL with ab183967 at 1/8000 dilution, followed by Goat Anti-Rabbit IgG H&L (HRP) (**ab97051**) at 1/500 dilution. No staining was observed on mouse stomach.

Counter stained with Hematoxylin.

Secondary antibody only control: Used PBS instead of primary antibody, secondary antibody is **ab97051** at 1/500 dilution.

Perform heat mediated antigen retrieval with Tris/EDTA buffer pH 9.0 before commencing with IHC staining protocol.



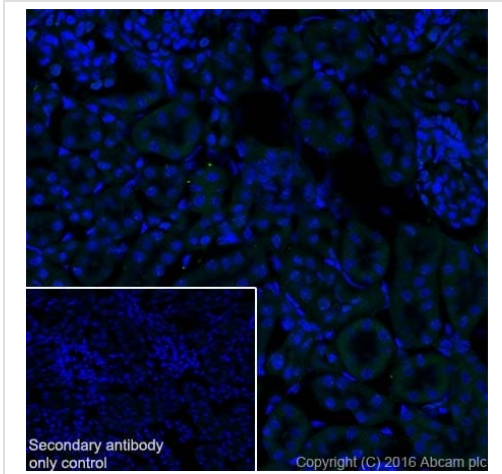
Immunohistochemistry (Frozen sections) - Anti-Prolactin/PRL antibody [EPR19386] (ab183967)

Immunohistochemical analysis of 4% paraformaldehyde-fixed, 0.2% Triton X-100 permeabilized frozen Mouse pituitary tissue labeling Prolactin/PRL with ab183967 at 1/200 dilution, followed by Goat Anti-Rabbit IgG (Alexa Fluor<sup>®</sup> 488) (**ab150077**) secondary antibody at 1/1000 dilution (green).

The result showed cytoplasmic staining on mouse anterior pituitary.

The nuclear counterstain is DAPI (blue).

Secondary antibody only control: Used PBS instead of primary antibody, secondary antibody is **ab150077** at 1/1000 dilution.



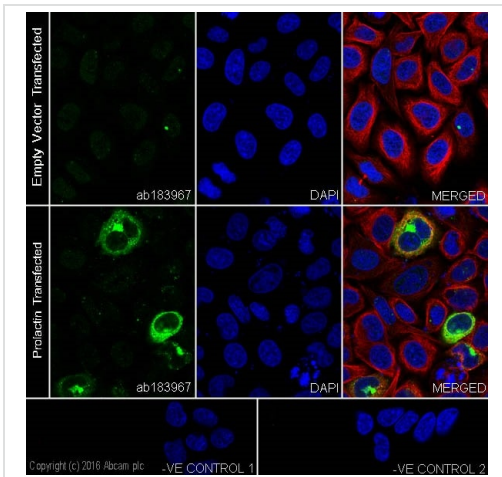
Immunohistochemistry (Frozen sections) - Anti-Prolactin/PRL antibody [EPR19386] (ab183967)

Immunohistochemical analysis of 4% paraformaldehyde-fixed, 0.2% Triton X-100 permeabilized frozen Mouse kidney tissue labeling Prolactin/PRL with ab183967 at 1/200 dilution, followed by Goat Anti-Rabbit IgG (Alexa Fluor® 488) ([ab150077](#)) secondary antibody at 1/1000 dilution (green).

No staining was observed on mouse kidney.

The nuclear counterstain is DAPI (blue).

Secondary antibody only control: Used PBS instead of primary antibody, secondary antibody is [ab150077](#) at 1/1000 dilution.



Immunocytochemistry/ Immunofluorescence - Anti-Prolactin/PRL antibody [EPR19386] (ab183967)

Immunofluorescent analysis of 4% paraformaldehyde-fixed, 0.1% Triton X-100 permeabilized HeLa (Human epithelial cell line from cervix adenocarcinoma) cells labeling Prolactin/PRL with ab183967 at 1/100 dilution, followed by Goat Anti-Rabbit IgG (Alexa Fluor® 488) ([ab150077](#)) secondary antibody at 1/1000 dilution (green).

The results show positive staining on HeLa cells transfected with myc-tagged Prolactin.

The nuclear counter stain is DAPI (blue).

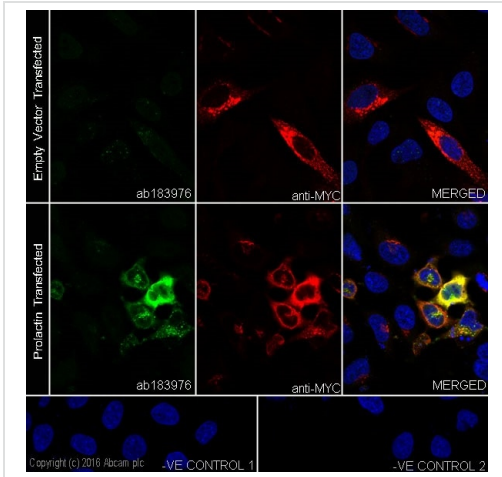
Tubulin is detected with Anti-alpha Tubulin antibody [DM1A] - Loading Control ([ab7291](#)) at 1/1000 dilution and Goat Anti-Mouse IgG H&L (Alexa Fluor® 594) preadsorbed ([ab150120](#)) at 1/1000 dilution (red).

The negative controls are as follows:

-ve control 1: ab183967 at 1/100 dilution followed by [ab150120](#) at 1/1000 dilution.

-ve control 2: [ab7291](#) at 1/1000 dilution followed by [ab150077](#) at 1/1000 dilution.





Immunocytochemistry/ Immunofluorescence - Anti-Prolactin/PRL antibody [EPR19386] (ab183967)

Immunofluorescent analysis of 4% paraformaldehyde-fixed, 0.1% Triton X-100 permeabilized HeLa (Human epithelial cell line from cervix adenocarcinoma) cells labeling Prolactin/PRL with ab183967 at 1/100 dilution, followed by Goat Anti-Rabbit IgG (Alexa Fluor® 488) ([ab150077](#)) secondary antibody at 1/1000 dilution (green).

The results show positive staining on HeLa cells transfected with myc-tagged Prolactin.

The nuclear counter stain is DAPI (blue).

Myc is detected with anti-c-Myc (mouse mAb) at 1/1000 dilution and Goat Anti-Mouse IgG H&L (Alexa Fluor® 594) preadsorbed ([ab150120](#)) at 1/1000 dilution (red).

The negative controls are as follows:

-ve control 1: ab183967 at 1/100 dilution followed by [ab150120](#) at 1/1000 dilution.

-ve control 2: Anti-c-Myc at 1/1000 dilution followed by [ab150077](#) at 1/1000 dilution.

Why choose a recombinant antibody?

- Research with confidence**  
Consistent and reproducible results
- Long-term and scalable supply**  
Recombinant technology
- Success from the first experiment**  
Confirmed specificity
- Ethical standards compliant**  
Animal-free production

Anti-Prolactin/PRL antibody [EPR19386] (ab183967)

**Please note:** All products are "FOR RESEARCH USE ONLY. NOT FOR USE IN DIAGNOSTIC PROCEDURES"

### Our Abpromise to you: Quality guaranteed and expert technical support

- Replacement or refund for products not performing as stated on the datasheet
- Valid for 12 months from date of delivery
- Response to your inquiry within 24 hours
- We provide support in Chinese, English, French, German, Japanese and Spanish
- Extensive multi-media technical resources to help you

- We investigate all quality concerns to ensure our products perform to the highest standards

If the product does not perform as described on this datasheet, we will offer a refund or replacement. For full details of the Abpromise, please visit <https://www.abcam.co.jp/abpromise> or contact our technical team.

### **Terms and conditions**

---

- Guarantee only valid for products bought direct from Abcam or one of our authorized distributors