


Anti-Prolactin Receptor/PRL-R antibody [EPR7184(2)] ab170935

リコンビナント **RabMAb**

★★★★★ **1 Abreviews** **10 References** 画像数 5

製品の概要

製品名	Anti-Prolactin Receptor/PRL-R antibody [EPR7184(2)]
製品の詳細	Rabbit monoclonal [EPR7184(2)] to Prolactin Receptor/PRL-R
由来種	Rabbit
アプリケーション	適用あり: WB, IHC-P, ICC/IF 適用なし: Flow Cyt or IP
種交差性	交差種: Human 交差が予測される動物種: Mouse, Rat 
免疫原	Synthetic peptide within Human Prolactin Receptor/PRL-R aa 50-150 (Cysteine residue). The exact sequence is proprietary. Database link: <u>P16471</u>
ポジティブ・コントロール	T47-D, (B) A431 and (C) Jurkat whole cell lysate (<u>ab7899</u>), Human breast carcinoma & kidney tissue, Jurkat cells
特記事項	This product is a recombinant monoclonal antibody, which offers several advantages including: - High batch-to-batch consistency and reproducibility - Improved sensitivity and specificity - Long-term security of supply - Animal-free production For more information <u>see here</u> . Our RabMAb® technology is a patented hybridoma-based technology for making rabbit monoclonal antibodies. For details on our patents, please refer to <u>RabMAb® patents</u> .

製品の特性

製品の状態	Liquid
保存方法	Shipped at 4°C. Store at +4°C short term (1-2 weeks). Upon delivery aliquot. Store at -20°C long term. Avoid freeze / thaw cycle.
バッファー	pH: 7.2 Preservative: 0.01% Sodium azide Constituents: 59% PBS, 40% Glycerol (glycerin, glycerine), 0.5% BSA
精製度	Protein A purified

ポリ/モノ	モノクローナル
クローン名	EPR7184(2)
アイソタイプ	IgG

アプリケーション

The Abpromise guarantee Abpromise保証は、 次のテスト済みアプリケーションにおけるab170935の使用に適用されます
アプリケーションノートには、推奨の開始希釈率がありますが、適切な希釈率につきましてはご検討ください。

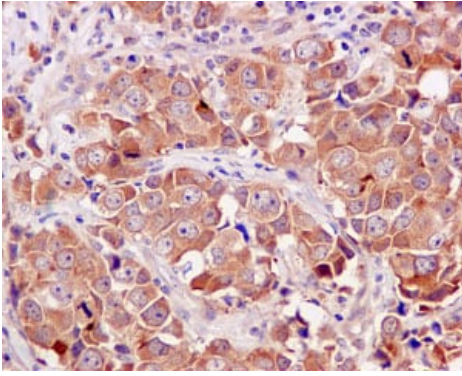
アプリケーション	Abreviews	特記事項
WB		1/1000 - 1/5000. Predicted molecular weight: 70 kDa.
IHC-P	★★★★★ (1)	1/50 - 1/100. Perform heat mediated antigen retrieval with citrate buffer pH 6 before commencing with IHC staining protocol. ab170935 shows background nuclear staining on mouse colon,pancreas and lung.
ICC/IF		1/100 - 1/250.

追加情報 Is unsuitable for Flow Cyt or IP.

ターゲット情報

機能	This is a receptor for the anterior pituitary hormone prolactin (PRL). Isoform 4 is unable to transduce prolactin signaling. Isoform 6 is unable to transduce prolactin signaling.
組織特異性	Expressed in breast, placenta, kidney, liver and pancreas.
配列類似性	Belongs to the type I cytokine receptor family. Type 1 subfamily. Contains 2 fibronectin type-III domains.
ドメイン	The WSXWS motif appears to be necessary for proper protein folding and thereby efficient intracellular transport and cell-surface receptor binding. The box 1 motif is required for JAK interaction and/or activation.
細胞内局在	Secreted and Membrane.

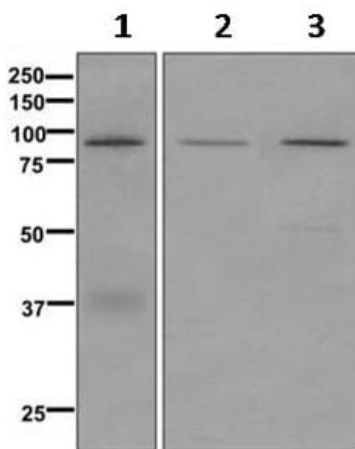
画像



Immunohistochemistry (Formalin/PFA-fixed paraffin-embedded sections) - Anti-Prolactin Receptor/PRL-R antibody [EPR7184(2)] (ab170935)

Immunohistochemical analysis of paraffin-embedded human breast carcinoma tissue labeling Prolactin Receptor / PRL-R with ab170935 at 1/50 dilution.

Perform heat mediated antigen retrieval with citrate buffer pH 6 before commencing with IHC staining protocol.



Western blot - Anti-Prolactin Receptor/PRL-R antibody [EPR7184(2)] (ab170935)

All lanes : Anti-Prolactin Receptor/PRL-R antibody [EPR7184(2)] (ab170935) at 1/1000 dilution

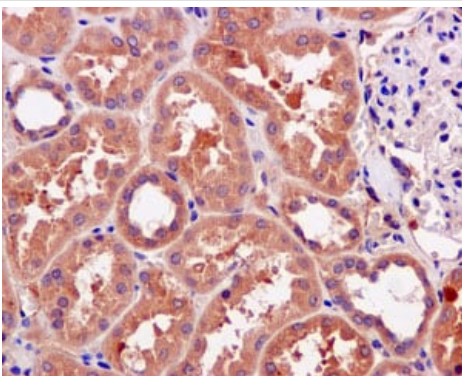
Lane 1 : T47-D cell lysates

Lane 2 : A431 cell lysates

Lane 3 : Jurkat cell lysates

Lysates/proteins at 10 µg per lane.

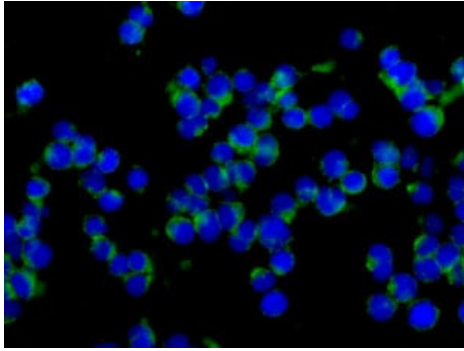
Predicted band size: 70 kDa



Immunohistochemistry (Formalin/PFA-fixed paraffin-embedded sections) - Anti-Prolactin Receptor/PRL-R antibody [EPR7184(2)] (ab170935)

Immunohistochemical analysis of paraffin-embedded human kidney tissue labeling Prolactin Receptor / PRL-R with ab170935 at 1/50 dilution.

Perform heat mediated antigen retrieval with citrate buffer pH 6 before commencing with IHC staining protocol.



Immunofluorescence analysis of Jurkat cells labeling Prolactin Receptor / PRL-R with ab170935 at 1/100 dilution.

Immunocytochemistry/ Immunofluorescence - Anti-Prolactin Receptor/PRL-R antibody [EPR7184(2)] (ab170935)

Why choose a recombinant antibody?



Anti-Prolactin Receptor/PRL-R antibody [EPR7184(2)] (ab170935)

Please note: All products are "FOR RESEARCH USE ONLY. NOT FOR USE IN DIAGNOSTIC PROCEDURES"

Our Abpromise to you: Quality guaranteed and expert technical support

- Replacement or refund for products not performing as stated on the datasheet
- Valid for 12 months from date of delivery
- Response to your inquiry within 24 hours
- We provide support in Chinese, English, French, German, Japanese and Spanish
- Extensive multi-media technical resources to help you
- We investigate all quality concerns to ensure our products perform to the highest standards

If the product does not perform as described on this datasheet, we will offer a refund or replacement. For full details of the Abpromise, please visit <https://www.abcam.co.jp/abpromise> or contact our technical team.

Terms and conditions

- Guarantee only valid for products bought direct from Abcam or one of our authorized distributors