

Anti-Prolactin Receptor/PRL-R antibody [B6.2 + PRLR742] ab199015

画像数 1

製品の概要

製品名	Anti-Prolactin Receptor/PRL-R antibody [B6.2 + PRLR742]
製品の詳細	Mouse monoclonal [B6.2 + PRLR742] to Prolactin Receptor/PRL-R
由来種	Mouse
アプリケーション	適用あり: IHC-P
種交差性	交差種: Human
免疫原	This product was produced with the following immunogens: Recombinant full length protein corresponding to Human Prolactin Receptor/PRL-R. (PRLR742) Database link: P16471

Recombinant full length protein corresponding to Human Prolactin Receptor/ PRL-R. Semi-purified. (B6.2)
Database link: [P16471](#)

ポジティブ・コントロール IHC-P: Human testicular carcinoma tissue.

特記事項
The Life Science industry has been in the grips of a reproducibility crisis for a number of years. Abcam is leading the way in addressing this with our range of recombinant monoclonal antibodies and knockout edited cell lines for gold-standard validation. Please check that this product meets your needs before purchasing.

If you have any questions, special requirements or concerns, please send us an inquiry and/or contact our Support team ahead of purchase. Recommended alternatives for this product can be found below, along with publications, customer reviews and Q&As

Please note that this antibody is an oligoclonal antibody. It is a cocktail of monoclonal antibodies that have been carefully selected. Oligoclonal antibodies have not only the specificity and batch-to-batch consistency of a monoclonal antibody, but also have the advantage of the sensitivity of a polyclonal antibody due to their ability to recognize multiple epitopes on an antigen.

製品の特性

製品の状態	Liquid
保存方法	Shipped at 4°C. Store at +4°C short term (1-2 weeks). Upon delivery aliquot. Store at -20°C long term. Avoid freeze / thaw cycle.

バッファー	pH: 7.2 Preservative: 0.05% Sodium azide Constituents: 99% PBS, 0.05% BSA
精製度	Protein G purified
特記事項(精製)	ab199015 was purified from Bioreactor Concentrate.
ポリ/モノ	モノクローナル
クローン名	B6.2 + PRLR742
アイソタイプ	IgG1
軽鎖の種類	kappa

アプリケーション

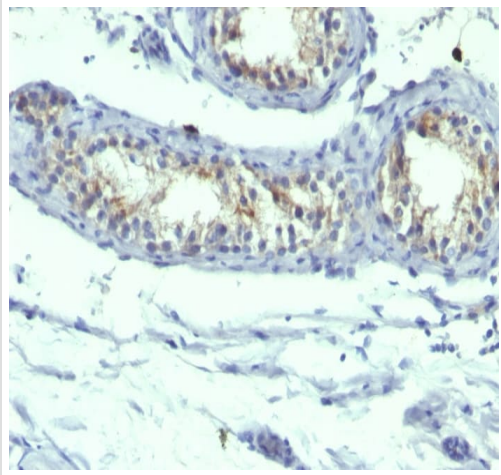
The Abpromise guarantee Abpromise保証は、次のテスト済みアプリケーションにおけるab199015の使用に適用されず
アプリケーションノートには、推奨の開始希釈率がありますが、適切な希釈率につきましてはご検討ください。

アプリケーション	Abreviews	特記事項
IHC-P		Use a concentration of 1 - 2 µg/ml. Perform heat mediated antigen retrieval with Tris/EDTA buffer pH 9.0 before commencing with IHC staining protocol. Primary incubation for 30 minutes at room temperature.

ターゲット情報

機能	This is a receptor for the anterior pituitary hormone prolactin (PRL). Isoform 4 is unable to transduce prolactin signaling. Isoform 6 is unable to transduce prolactin signaling.
組織特異性	Expressed in breast, placenta, kidney, liver and pancreas.
配列類似性	Belongs to the type I cytokine receptor family. Type 1 subfamily. Contains 2 fibronectin type-III domains.
ドメイン	The WSXWS motif appears to be necessary for proper protein folding and thereby efficient intracellular transport and cell-surface receptor binding. The box 1 motif is required for JAK interaction and/or activation.
細胞内局在	Secreted and Membrane.

画像



Formalin-fixed, paraffin-embedded human Testicular Carcinoma tissue stained for Prolactin Receptor/PRL-R using ab199015 at 2 µg/ml in immunohistochemical analysis.

Immunohistochemistry (Formalin/PFA-fixed paraffin-embedded sections) - Anti-Prolactin Receptor/PRL-R antibody [B6.2 + PRLR742] (ab199015)

Please note: All products are "FOR RESEARCH USE ONLY. NOT FOR USE IN DIAGNOSTIC PROCEDURES"

Our Abpromise to you: Quality guaranteed and expert technical support

- Replacement or refund for products not performing as stated on the datasheet
- Valid for 12 months from date of delivery
- Response to your inquiry within 24 hours
- We provide support in Chinese, English, French, German, Japanese and Spanish
- Extensive multi-media technical resources to help you
- We investigate all quality concerns to ensure our products perform to the highest standards

If the product does not perform as described on this datasheet, we will offer a refund or replacement. For full details of the Abpromise, please visit <https://www.abcam.co.jp/abpromise> or contact our technical team.

Terms and conditions

- Guarantee only valid for products bought direct from Abcam or one of our authorized distributors