


# Anti-PRKACG antibody [EP2647Y] ab108385

RabMAb

★★★★☆ [1 Abreviews](#) [7 References](#) [画像数 1](#)

### 製品の概要

製品名	Anti-PRKACG antibody [EP2647Y]
製品の詳細	Rabbit monoclonal [EP2647Y] to PRKACG
由来種	Rabbit
特異性	This antibody is likely to react with the alpha subunit, as it possesses 85.7% similar homology with the immunogen. Additionally, it may react with the beta subunit, possessing 78.6% homology.
アプリケーション	<b>適用あり:</b> WB <b>適用なし:</b> ICC/IF or IHC-P
種交差性	<b>交差種:</b> Human <b>交差が予測される動物種:</b> Mouse, Rat 
免疫原	Synthetic peptide. This information is proprietary to Abcam and/or its suppliers.
ポジティブ・コントロール	HeLa, MCF7, PC3 and A549 cell lysates
特記事項	Our RabMAb <sup>®</sup> technology is a patented hybridoma-based technology for making rabbit monoclonal antibodies. For details on our patents, please refer to <a href="#">RabMAb<sup>®</sup> patents</a> .  The Life Science industry has been in the grips of a reproducibility crisis for a number of years. Abcam is leading the way in addressing this with our range of recombinant monoclonal antibodies and knockout edited cell lines for gold-standard validation. Please check that this product meets your needs before purchasing.  If you have any questions, special requirements or concerns, please send us an inquiry and/or contact our Support team ahead of purchase. Recommended alternatives for this product can be found below, along with publications, customer reviews and Q&As

### 製品の特性

製品の状態	Liquid
保存方法	Shipped at 4°C. Store at -20°C. Stable for 12 months at -20°C.
バッファー	pH: 7.20 Preservative: 0.05% Sodium azide Constituents: 0.1% BSA, 40% Glycerol (glycerin, glycerine), 9.85% Tris glycine, 50% Tissue culture supernatant

精製度	Tissue culture supernatant
ポリ/モノ	モノクローナル
クローン名	EP2647Y
アイソタイプ	IgG

## アプリケーション

**The Abpromise guarantee** Abpromise保証は、次のテスト済みアプリケーションにおけるab108385の使用に適用されます  
 アプリケーションノートには、推奨の開始希釈率がありますが、適切な希釈率につきましてはご確認ください。

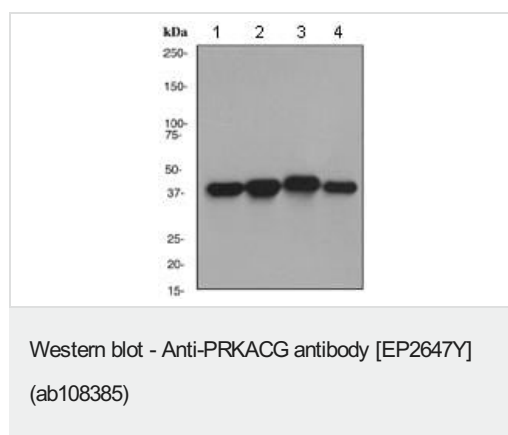
アプリケーション	Abreviews	特記事項
WB	★★★★★ (1)	1/50000 - 1/200000. Detects a band of approximately 40 kDa (predicted molecular weight: 40 kDa).

**追加情報** Is unsuitable for ICC/IF or IHC-P.

## ターゲット情報

<b>機能</b>	Phosphorylates a large number of substrates in the cytoplasm and the nucleus.
<b>組織特異性</b>	Testis specific. But important tissues such as brain and ovary have not been analyzed for the content of transcript.
<b>配列類似性</b>	Belongs to the protein kinase superfamily. AGC Ser/Thr protein kinase family. cAMP subfamily. Contains 1 AGC-kinase C-terminal domain. Contains 1 protein kinase domain.

## 画像



**All lanes** : Anti-PRKACG antibody [EP2647Y] (ab108385) at 1/50000 dilution

- Lane 1** : HeLa cell lysate
- Lane 2** : MCF7 cell lysate
- Lane 3** : PC3 cell lysate
- Lane 4** : A549 cell lysate

Lysates/proteins at 10 µg per lane.

**Predicted band size:** 40 kDa  
**Observed band size:** 40 kDa

**Please note:** All products are "FOR RESEARCH USE ONLY. NOT FOR USE IN DIAGNOSTIC PROCEDURES"

## **Our Abpromise to you: Quality guaranteed and expert technical support**

---

- Replacement or refund for products not performing as stated on the datasheet
- Valid for 12 months from date of delivery
- Response to your inquiry within 24 hours
  
- We provide support in Chinese, English, French, German, Japanese and Spanish
- Extensive multi-media technical resources to help you
- We investigate all quality concerns to ensure our products perform to the highest standards

If the product does not perform as described on this datasheet, we will offer a refund or replacement. For full details of the Abpromise, please visit <https://www.abcam.co.jp/abpromise> or contact our technical team.

## **Terms and conditions**

---

- Guarantee only valid for products bought direct from Abcam or one of our authorized distributors