


Anti-PPM1G antibody [EPR13362-31] ab186423

リコンビナント **RabMAb**

画像数 7

製品の概要

製品名	Anti-PPM1G antibody [EPR13362-31]
製品の詳細	Rabbit monoclonal [EPR13362-31] to PPM1G
由来種	Rabbit
アプリケーション	適用あり: Flow Cyt (Intra), WB, IHC-P, ICC/IF
種交差性	交差種: Mouse, Human 交差が予測される動物種: Rat 
免疫原	Recombinant fragment. This information is proprietary to Abcam and/or its suppliers.
ポジティブ・コントロール	293T, Jurkat, HeLa and MCF7 cell lysates; Human kidney clear cell carcinoma and Mouse cardiac muscle tissues; HeLa, 293T and 293 cells.
特記事項	<p>This product is a recombinant monoclonal antibody, which offers several advantages including:</p> <ul style="list-style-type: none"> - High batch-to-batch consistency and reproducibility - Improved sensitivity and specificity - Long-term security of supply - Animal-free production <p>For more information see here.</p> <p>Our RabMAb[®] technology is a patented hybridoma-based technology for making rabbit monoclonal antibodies. For details on our patents, please refer to RabMAb[®] patents.</p>

製品の特性

製品の状態	Liquid
保存方法	Shipped at 4°C. Store at +4°C short term (1-2 weeks). Upon delivery aliquot. Store at -20°C long term. Avoid freeze / thaw cycle.
バッファー	<p>pH: 7.2</p> <p>Preservative: 0.01% Sodium azide</p> <p>Constituents: 59% PBS, 40% Glycerol (glycerin, glycerine), 0.05% BSA</p>
精製度	Protein A purified
ポリ/モノ	モノクローナル
クローン名	EPR13362-31

アイソタイプIgG

アプリケーション

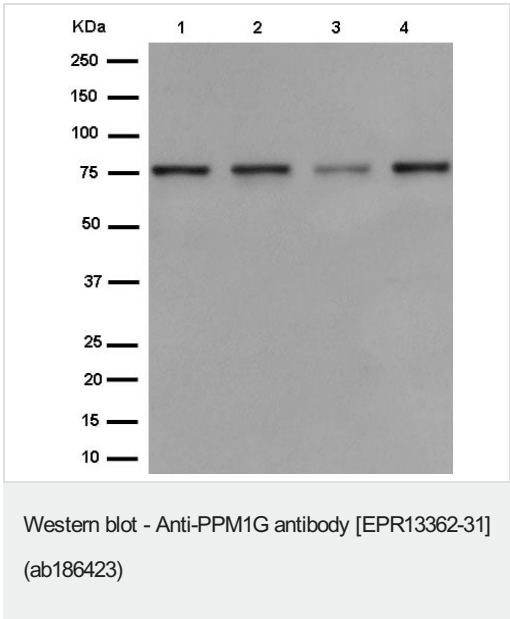
The Abpromise guarantee Abpromise保証は、 次のテスト済みアプリケーションにおけるab186423の使用に適用されます
アプリケーションノートには、推奨の開始希釈率がありますが、適切な希釈率につきましてはご検討ください。

アプリケーション	Abreviews	特記事項
Flow Cyt (Intra)		1/200. ab172730 - Rabbit monoclonal IgG, is suitable for use as an isotype control with this antibody.
WB		1/1000 - 1/10000. Detects a band of approximately 75 kDa (predicted molecular weight: 59 kDa).
IHC-P		1/250 - 1/500. Perform heat mediated antigen retrieval with Tris/EDTA buffer pH 9.0 before commencing with IHC staining protocol.
ICC/IF		1/100.

ターゲット情報

組織特異性	Widely expressed. Most abundant in testis, skeletal muscle, and heart.
配列類似性	Belongs to the PP2C family.
翻訳後修飾	Phosphorylated upon DNA damage, probably by ATM or ATR.
細胞内局在	Cytoplasm.

画像



All lanes : Anti-PPM1G antibody [EPR13362-31] (ab186423) at 1/10000 dilution

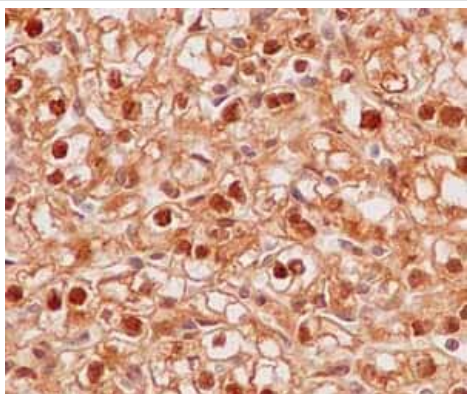
- Lane 1 :** 293T cell lysate
- Lane 2 :** Jurkat cell lysate
- Lane 3 :** HeLa cell lysate
- Lane 4 :** MCF7 cell lysate

Lysates/proteins at 20 µg per lane.

Secondary

All lanes : Goat Anti-Rabbit IgG, (H+L), Peroxidase conjugate at 1/1000 dilution

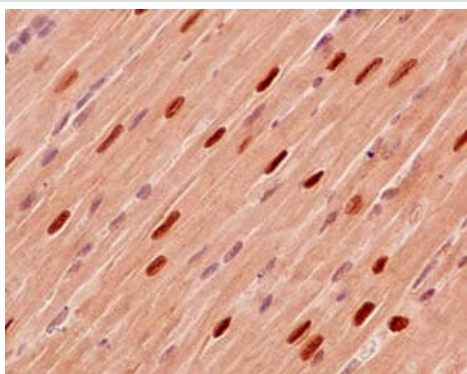
Predicted band size: 59 kDa



Immunohistochemistry (Formalin/PFA-fixed paraffin-embedded sections) - Anti-PPM1G antibody [EPR13362-31] (ab186423)

Immunohistochemical analysis of paraffin-embedded Human kidney clear cell carcinoma tissue labeling PPM1G with ab186423 at 1/500 dilution followed by prediluted HRP Polymer for Rabbit IgG. Counter stained with Hematoxylin.

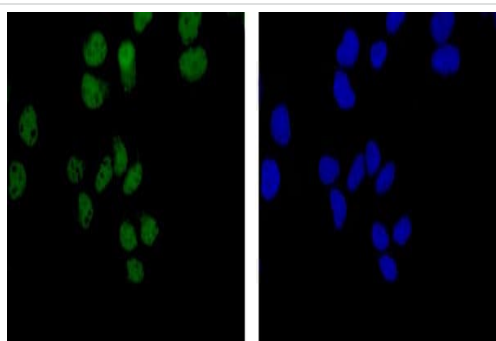
Perform heat mediated antigen retrieval with EDTA buffer pH 9 before commencing with IHC staining protocol.



Immunohistochemistry (Formalin/PFA-fixed paraffin-embedded sections) - Anti-PPM1G antibody [EPR13362-31] (ab186423)

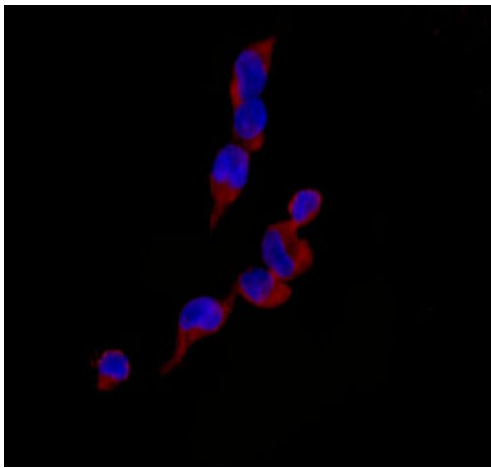
Immunohistochemical analysis of paraffin-embedded Mouse cardiac muscle tissue labeling PPM1G with ab186423 at 1/500 dilution followed by prediluted HRP Polymer for Rabbit IgG. Counter stained with Hematoxylin.

Perform heat mediated antigen retrieval with EDTA buffer pH 9 before commencing with IHC staining protocol.



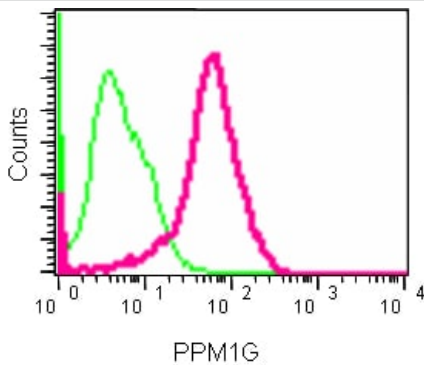
Immunocytochemistry/ Immunofluorescence - Anti-PPM1G antibody [EPR13362-31] (ab186423)

Immunofluorescent analysis of 4% paraformaldehyde-fixed HeLa cells labeling PPM1G with ab186423 at 1/500 dilution followed by Goat anti rabbit IgG (Alexa Fluor® 488) secondary antibody at 1/200 dilution (Green). Counter stained with Dapi (Blue).



Immunocytochemistry/ Immunofluorescence - Anti-PPM1G antibody [EPR13362-31] (ab186423)

Immunofluorescent analysis of 4% paraformaldehyde-fixed 293T cells labeling PPM1G with ab186423 at 1/100 dilution followed by Goat anti rabbit IgG (Alexa Fluor® 555) secondary antibody at 1/200 dilution. Counter stained with Dapi.



Flow Cytometry (Intracellular) - Anti-PPM1G antibody [EPR13362-31] (ab186423)

Intracellular flow cytometric analysis of 2% paraformaldehyde-fixed 293 cells labeling PPM1G with ab186423 at 1/200 dilution (red) compared to a Rabbit monoclonal IgG isotype control (green), followed by Goat anti rabbit IgG (FITC) secondary antibody at 1/150 dilution.

Why choose a recombinant antibody?



Anti-PPM1G antibody [EPR13362-31] (ab186423)

Our Abpromise to you: Quality guaranteed and expert technical support

- Replacement or refund for products not performing as stated on the datasheet
- Valid for 12 months from date of delivery
- Response to your inquiry within 24 hours
- We provide support in Chinese, English, French, German, Japanese and Spanish
- Extensive multi-media technical resources to help you
- We investigate all quality concerns to ensure our products perform to the highest standards

If the product does not perform as described on this datasheet, we will offer a refund or replacement. For full details of the Abpromise, please visit <https://www.abcam.co.jp/abpromise> or contact our technical team.

Terms and conditions

- Guarantee only valid for products bought direct from Abcam or one of our authorized distributors