

# Anti-PPM1D/WIP1 antibody [EPR22960-39] - BSA and Azide free ab269864

リコンビナント RabMAb

画像数 4

### 製品の概要

製品名	Anti-PPM1D/WIP1 antibody [EPR22960-39] - BSA and Azide free
製品の詳細	Rabbit monoclonal [EPR22960-39] to PPM1D/WIP1 - BSA and Azide free
由来種	Rabbit
特異性	<b>The antibody detects specifically PPM1D430.</b>
アプリケーション	<b>適用あり:</b> Flow Cyt (Intra), WB, ICC/IF <b>適用なし:</b> Flow Cyt, IHC-P or IP
種交差性	<b>交差種:</b> Mouse, Rat, Human
免疫原	Synthetic peptide. This information is proprietary to Abcam and/or its suppliers.
ポジティブ・コントロール	WB: MCF7, Jurkat, A549, F9, HCT 116, RAW 264.7, PC-12 and NIH/3T3 whole cell lysate, Human testis and lung cancer tissue lysates, Mouse and Rat spleen tissue lysates. ICC/IF: MCF7, HCT-116 cells. Flow Cyt (intra): MCF7 cell.
特記事項	<p>ab269864 is the carrier-free version of <a href="#">ab234439</a>.</p> <p>Our <b>carrier-free</b> antibodies are typically supplied in a PBS-only formulation, purified and free of BSA, sodium azide and glycerol. The carrier-free buffer and high concentration allow for increased conjugation efficiency.</p> <p>This conjugation-ready format is designed for use with fluorochromes, metal isotopes, oligonucleotides, and enzymes, which makes them ideal for antibody labelling, functional and cell-based assays, flow-based assays (e.g. mass cytometry) and Multiplex Imaging applications.</p> <p>Use our <b>conjugation kits</b> for antibody conjugates that are ready-to-use in as little as 20 minutes with &lt;1 minute hands-on-time and 100% antibody recovery: available for fluorescent dyes, HRP, biotin and gold.</p> <p>This product is compatible with the Maxpar<sup>®</sup> Antibody Labeling Kit from Fluidigm, without the need for antibody preparation. Maxpar<sup>®</sup> is a trademark of Fluidigm Canada Inc.</p> <p>This product is a recombinant monoclonal antibody, which offers several advantages including:</p> <ul style="list-style-type: none"><li>- High batch-to-batch consistency and reproducibility</li><li>- Improved sensitivity and specificity</li><li>- Long-term security of supply</li><li>- Animal-free production</li></ul>

For more information [see here](#).

Our RabMAb<sup>®</sup> technology is a patented hybridoma-based technology for making rabbit monoclonal antibodies. For details on our patents, please refer to [RabMAb<sup>®</sup> patents](#).

## 製品の特性

製品の状態	Liquid
保存方法	Shipped at 4°C. Store at +4°C. Do Not Freeze.
バッファー	pH: 7.2 Constituent: PBS
キャリア・フリー	はい
精製度	Protein A purified
ポリ/モノ	モノクローナル
クローン名	EPR22960-39
アイソタイプ	IgG

## アプリケーション

**The Abpromise guarantee**      **Abpromise保証は、次のテスト済みアプリケーションにおけるab269864の使用に適用されず**  
アプリケーションノートには、推奨の開始希釈率がありますが、適切な希釈率につきましてはご検討ください。

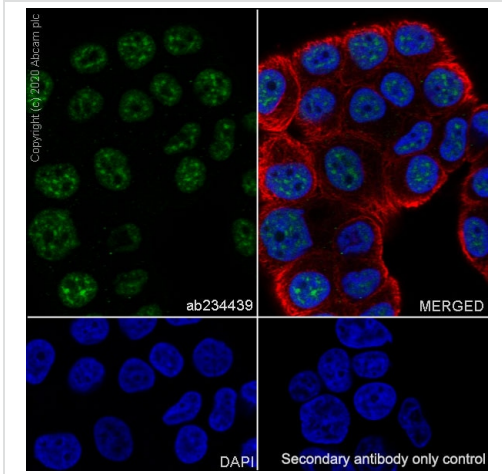
アプリケーション	Abreviews	特記事項
Flow Cyt (Intra)		Use at an assay dependent concentration.
WB		Use at an assay dependent concentration. Predicted molecular weight: 67 kDa.
ICC/IF		Use at an assay dependent concentration.

**追加情報**      Is unsuitable for Flow Cyt, IHC-P or IP.

## ターゲット情報

機能	Required for the relief of p53-dependent checkpoint mediated cell cycle arrest. Binds to and dephosphorylates 'Ser-15' of TP53 and 'Ser-345' of CHEK1 which contributes to the functional inactivation of these proteins.
配列類似性	Belongs to the PP2C family. Contains 1 PP2C-like domain.

## 画像

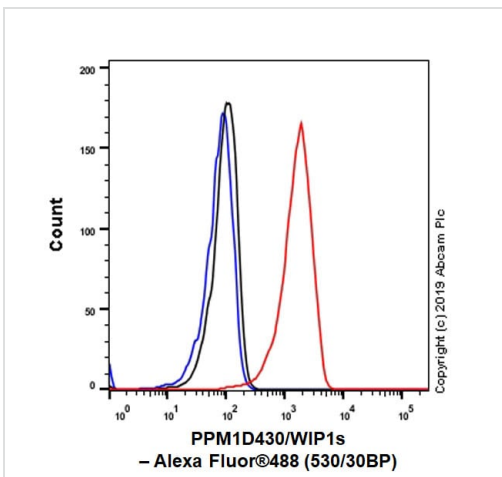


Immunocytochemistry/ Immunofluorescence - Anti-PPM1D/WIP1 antibody [EPR22960-39] - BSA and Azide free (ab269864)

Immunofluorescent analysis of 4% Paraformaldehyde-fixed, 0.1% TritonX-100 permeabilized MCF7 (Human breast adenocarcinoma cell line) cells labelling PPM1D430/WIP1s with **ab234439** at 1/50 dilution, followed by **ab150077** Goat Anti-Rabbit IgG H&L (Alexa Fluor® 488) antibody at 1/1000 dilution (Green). Confocal image showing nuclear staining in MCF7 cells. Tubulin is detected with Anti-alpha Tubulin antibody (Alexa Fluor® 594) **ab195889** at 1/200 dilution (Red). Nuclear counterstain was DAPI (Blue).

Secondary antibody only control: Secondary antibody is **ab150077** Goat Anti-Rabbit IgG H&L (Alexa Fluor® 488) at 1/1000 dilution.

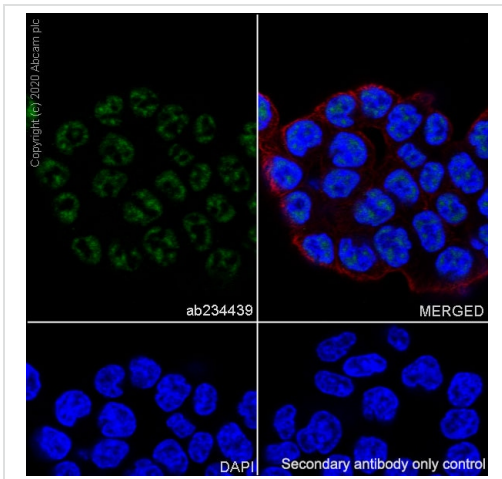
This data was developed using the same antibody clone in a different buffer formulation containing PBS, BSA, glycerol, and sodium azide (**ab234439**).



Flow Cytometry (Intracellular) - Anti-PPM1D/WIP1 antibody [EPR22960-39] - BSA and Azide free (ab269864)

Intracellular flow cytometric analysis of 4% paraformaldehyde fixed 90% methanol permeabilized MCF7 (Human breast adenocarcinoma cell line) cells labelling PPM1D430/WIP1s with **ab234439** at 1/500 dilution (Red) compared with a Rabbit monoclonal IgG (**ab172730**) (Black) isotype control and an unlabelled control (cells without incubation with primary antibody and secondary antibody) (Blue). A Goat anti rabbit IgG (Alexa Fluor® 488, **ab150077**) at 1/2000 dilution was used as the secondary antibody.

This data was developed using the same antibody clone in a different buffer formulation containing PBS, BSA, glycerol, and sodium azide (**ab234439**).







Immunofluorescent analysis of 4% Paraformaldehyde-fixed, 0.1% TritonX-100 permeabilized HCT-116 (Human colorectal carcinoma cell line) cells labelling PPM1D430/WIP1s with **ab234439** at 1/50 dilution, followed by **ab150077** Goat Anti-Rabbit IgG H&L (Alexa Fluor® 488) antibody at 1/1000 dilution (Green). Confocal image showing nuclear staining in HCT-116 cells. Tubulin is detected with Anti-alpha Tubulin antibody (Alexa Fluor® 594) **ab195889** at 1/200 dilution (Red). Nuclear counterstain was DAPI (Blue).

Secondary antibody only control: Secondary antibody is **ab150077** Goat Anti-Rabbit IgG H&L (Alexa Fluor® 488) at 1/1000 dilution.

This data was developed using the same antibody clone in a different buffer formulation containing PBS, BSA, glycerol, and sodium azide (**ab234439**).

Immunocytochemistry/ Immunofluorescence - Anti-PPM1D/WIP1 antibody [EPR22960-39] - BSA and Azide free (ab269864)

Why choose a recombinant antibody?

 <p><b>Research with confidence</b> Consistent and reproducible results</p>	 <p><b>Long-term and scalable supply</b> Recombinant technology</p>
 <p><b>Success from the first experiment</b> Confirmed specificity</p>	 <p><b>Ethical standards compliant</b> Animal-free production</p>

Anti-PPM1D/WIP1 antibody [EPR22960-39] - BSA and Azide free (ab269864)

**Please note:** All products are "FOR RESEARCH USE ONLY. NOT FOR USE IN DIAGNOSTIC PROCEDURES"

## **Our Abpromise to you: Quality guaranteed and expert technical support**

---

- Replacement or refund for products not performing as stated on the datasheet
- Valid for 12 months from date of delivery
- Response to your inquiry within 24 hours
  
- We provide support in Chinese, English, French, German, Japanese and Spanish
- Extensive multi-media technical resources to help you
- We investigate all quality concerns to ensure our products perform to the highest standards

If the product does not perform as described on this datasheet, we will offer a refund or replacement. For full details of the Abpromise, please visit <https://www.abcam.co.jp/abpromise> or contact our technical team.

## **Terms and conditions**

---

- Guarantee only valid for products bought direct from Abcam or one of our authorized distributors