


Anti-PP2A alpha + beta (methyl L309) antibody [2A10] ab66597

★★★★★ [5 Abreviews](#) [13 References](#) [画像数 2](#)

製品の概要

製品名	Anti-PP2A alpha + beta (methyl L309) antibody [2A10]
製品の詳細	Mouse monoclonal [2A10] to PP2A alpha + beta (methyl L309)
由来種	Mouse
アプリケーション	適用あり: WB
種交差性	交差種: Rat, Human 交差が予測される動物種: Mouse, Saccharomyces cerevisiae 
免疫原	Synthetic peptide. This information is proprietary to Abcam and/or its suppliers.
ポジティブ・コントロール	This antibody gave a positive signal in Hek293 and PC12 whole cell lysates
特記事項	<p>This antibody clone is manufactured by Abcam. If you require a custom buffer formulation or conjugation for your experiments, please contact orders@abcam.com.</p> <p>The Life Science industry has been in the grips of a reproducibility crisis for a number of years. Abcam is leading the way in addressing this with our range of recombinant monoclonal antibodies and knockout edited cell lines for gold-standard validation. Please check that this product meets your needs before purchasing.</p> <p>If you have any questions, special requirements or concerns, please send us an inquiry and/or contact our Support team ahead of purchase. Recommended alternatives for this product can be found below, along with publications, customer reviews and Q&As</p>

製品の特性

製品の状態	Liquid
保存方法	Shipped at 4°C. Upon delivery aliquot and store at -20°C or -80°C. Avoid repeated freeze / thaw cycles.
バッファー	pH: 7.40 Preservative: 0.02% Sodium azide Constituents: PBS, 6.97% L-Arginine
精製度	Protein G purified
ポリ/モノ	モノクローナル
クローン名	2A10
ミエローマ	NS1

アイソタイプ IgG1
軽鎖の種類 kappa

アプリケーション

The Abpromise guarantee **Abpromise保証は、次のテスト済みアプリケーションにおけるab66597の使用に適用されます**
アプリケーションノートには、推奨の開始希釈率がありますが、適切な希釈率につきましてはご検討ください。

アプリケーション	Abreviews	特記事項
WB	★★★★★ (5)	Use a concentration of 5 - 10 µg/ml. Detects a band of approximately 36 kDa (predicted molecular weight: 36 kDa).

ターゲット情報

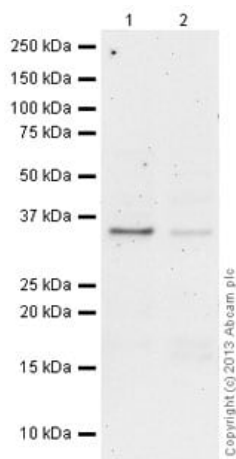
機能 PP2A can modulate the activity of phosphorylase B kinase casein kinase 2, mitogen-stimulated S6 kinase, and MAP-2 kinase. Cooperates with SGOL2 to protect centromeric cohesin from separase-mediated cleavage in oocytes specifically during meiosis I (By similarity). Can dephosphorylate SV40 large T antigen and p53/TP53. Dephosphorylates SV40 large T antigen, preferentially on serine residues 120, 123, 677, and perhaps 679. The C subunit was most active, followed by the AC form, which was more active than the ABC form, and activity of all three forms was strongly stimulated by manganese, and to a lesser extent by magnesium. Dephosphorylation by the AC form, but not C or ABC form is inhibited by small T antigen. Activates RAF1 by dephosphorylating it at 'Ser-259'.

配列類似性 Belongs to the PPP phosphatase family. PP-1 subfamily.

翻訳後修飾 Reversibly methyl esterified on Leu-309. Carboxyl methylation may play a role in holoenzyme assembly, enhancing the affinity of the PP2A core enzyme for some, but not all, regulatory subunits. It varies during the cell cycle. Phosphorylation of either threonine (by autophosphorylation-activated protein kinase) or tyrosine results in inactivation of the phosphatase. Auto-dephosphorylation has been suggested as a mechanism for reactivation.

細胞内局在 Cytoplasm. Nucleus. Chromosome > centromere. Cytoplasm > cytoskeleton > spindle pole. In prometaphase cells, but not in anaphase cells, localizes at centromeres. During mitosis, also found at spindle poles. Centromeric localization requires the presence of SGOL2.

画像



Western blot - Anti-PP2A alpha + beta (methylation L309) antibody [2A10] (ab66597)

All lanes : Anti-PP2A alpha + beta (methyl L309) antibody [2A10] (ab66597) at 10 µg/ml

Lane 1 : HEK293 (Human embryonic kidney cell line) Whole Cell Lysate

Lane 2 : PC12 (Rat adrenal pheochromocytoma cell line) Whole Cell Lysate

Lysates/proteins at 20 µg per lane.

Secondary

All lanes : Goat Anti-Mouse IgG H&L (HRP) preadsorbed (**ab97040**) at 1/10000 dilution

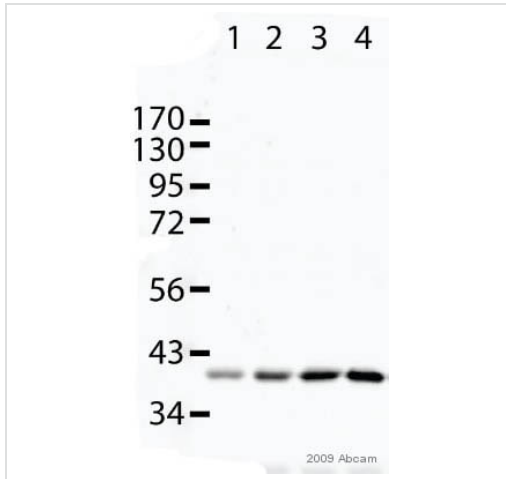
Developed using the ECL technique.

Performed under reducing conditions.

Predicted band size: 36 kDa

Observed band size: 36 kDa

Exposure time: 20 minutes



Western blot - Anti-PP2A alpha + beta (methylation L309) antibody [2A10] (ab66597)

This image is courtesy of an anonymous Abreview

All lanes : Anti-PP2A alpha + beta (methyl L309) antibody [2A10] (ab66597) at 1/1000 dilution

Lane 1 : No LCMT1 with 100% Licor Blocking Buffer for 30 minutes at 25°C.

Lane 2 : LCMT1 at 0.02 µg/ml with 100% Licor Blocking Buffer for 30 minutes at 25°C.

Lane 3 : LCMT1 at 0.1 µg/ml with 100% Licor Blocking Buffer for 30 minutes at 25°C.

Lane 4 : LCMT1 at 0.5 µg/ml with 100% Licor Blocking Buffer for 30 minutes at 25°C.

Secondary

All lanes : IRDye 800CW conjugated goat anti-mouse polyclonal at 1/5000 dilution

Performed under reducing conditions.

Predicted band size: 36 kDa

Detection method: Licor 10 minute exposure.

Specific observed bands at 40kDa

Please note: All products are "FOR RESEARCH USE ONLY. NOT FOR USE IN DIAGNOSTIC PROCEDURES"

Our Abpromise to you: Quality guaranteed and expert technical support

- Replacement or refund for products not performing as stated on the datasheet
- Valid for 12 months from date of delivery
- Response to your inquiry within 24 hours
- We provide support in Chinese, English, French, German, Japanese and Spanish
- Extensive multi-media technical resources to help you
- We investigate all quality concerns to ensure our products perform to the highest standards

If the product does not perform as described on this datasheet, we will offer a refund or replacement. For full details of the Abpromise, please visit <https://www.abcam.co.jp/abpromise> or contact our technical team.

Terms and conditions

- Guarantee only valid for products bought direct from Abcam or one of our authorized distributors