


### Anti-PP2A alpha + beta antibody [YE351] ab32065

リコンビナント **RabMAb**

★★★★★ [1 Abreviews](#) [5 References](#) [画像数 13](#)

#### 製品の概要

製品名	Anti-PP2A alpha + beta antibody [YE351]
製品の詳細	Rabbit monoclonal [YE351] to PP2A alpha + beta
由来種	Rabbit
特異性	This antibody can bind both alpha and beta form of PP2A. Mouse samples have been successfully tested in WB, but IHC-P sections from various mouse tissues showed negative results.
アプリケーション	<b>適用あり:</b> IP, WB, IHC-P, Dot blot <b>適用なし:</b> Flow Cyt or ICC/IF
種交差性	<b>交差種:</b> Mouse, Rat, Human <b>交差が予測される動物種:</b> Cow, Pig 
免疫原	Synthetic peptide within Human PP2A alpha + beta (N terminal). The exact sequence is proprietary.
エピトープ	ab32065 reacts with an epitope located in the N terminal region of PP2A alpha.
ポジティブ・コントロール	WB: A431 cell lysate and NIH 3T3 cell lysate. Dot Blot: PP2A-alpha peptide and PP2A-beta peptide.
特記事項	This product is a recombinant monoclonal antibody, which offers several advantages including: <ul style="list-style-type: none"> <li>- High batch-to-batch consistency and reproducibility</li> <li>- Improved sensitivity and specificity</li> <li>- Long-term security of supply</li> <li>- Animal-free production</li> </ul> For more information <a href="#">see here</a> . Our RabMAb <sup>®</sup> technology is a patented hybridoma-based technology for making rabbit monoclonal antibodies. For details on our patents, please refer to <a href="#">RabMAb<sup>®</sup> patents</a> .

#### 製品の特性

製品の状態	Liquid
保存方法	Shipped at 4°C. Upon delivery aliquot and store at -20°C. Avoid freeze / thaw cycles.
バッファー	pH: 7.20 Preservative: 0.01% Sodium azide

	Constituents: PBS, 50% Glycerol (glycerin, glycerine), 0.05% BSA
精製度	Protein A purified
ポリ/モノ	モノクローナル
クローン名	YE351
アイソタイプ	IgG

## アプリケーション

**The Abpromise guarantee**      **Abpromise保証は、次のテスト済みアプリケーションにおけるab32065の使用に適用されます**  
 アプリケーションノートには、推奨の開始希釈率がありますが、適切な希釈率につきましてはご検討ください。

アプリケーション	Abreviews	特記事項
IP		1/80.
WB	★★★★★ (1)	1/500. Predicted molecular weight: 36 kDa.
IHC-P		1/50 - 1/100. Perform heat mediated antigen retrieval with Tris/EDTA buffer pH 9.0 before commencing with IHC staining protocol.
Dot blot		Use at an assay dependent concentration.

**追加情報**      Is unsuitable for Flow Cyt or ICC/IF.

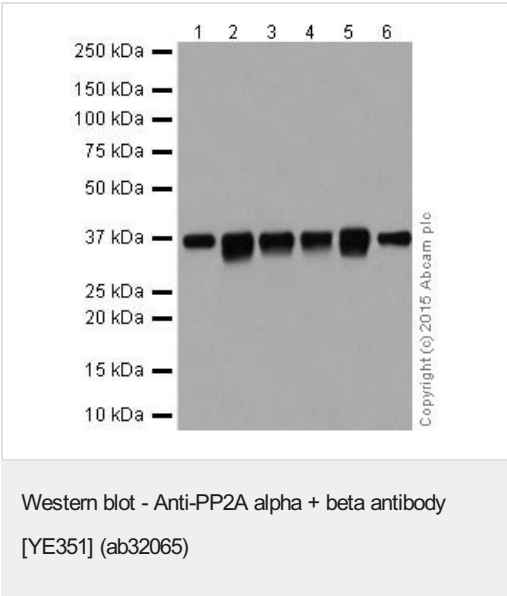
## ターゲット情報

**機能**      PP2A can modulate the activity of phosphorylase B kinase casein kinase 2, mitogen-stimulated S6 kinase, and MAP-2 kinase. Cooperates with SGOL2 to protect centromeric cohesin from separase-mediated cleavage in oocytes specifically during meiosis I (By similarity). Can dephosphorylate SV40 large T antigen and p53/TP53. Dephosphorylates SV40 large T antigen, preferentially on serine residues 120, 123, 677, and perhaps 679. The C subunit was most active, followed by the AC form, which was more active than the ABC form, and activity of all three forms was strongly stimulated by manganese, and to a lesser extent by magnesium. Dephosphorylation by the AC form, but not C or ABC form is inhibited by small T antigen. Activates RAF1 by dephosphorylating it at 'Ser-259'.

**配列類似性**      Belongs to the PPP phosphatase family. PP-1 subfamily.

**翻訳後修飾**      Reversibly methyl esterified on Leu-309. Carboxyl methylation may play a role in holoenzyme assembly, enhancing the affinity of the PP2A core enzyme for some, but not all, regulatory subunits. It varies during the cell cycle.  
 Phosphorylation of either threonine (by autophosphorylation-activated protein kinase) or tyrosine results in inactivation of the phosphatase. Auto-dephosphorylation has been suggested as a mechanism for reactivation.

**細胞内局在**      Cytoplasm. Nucleus. Chromosome > centromere. Cytoplasm > cytoskeleton > spindle pole. In prometaphase cells, but not in anaphase cells, localizes at centromeres. During mitosis, also found at spindle poles. Centromeric localization requires the presence of SGOL2.



**All lanes :** Anti-PP2A alpha + beta antibody [YE351] (ab32065) at 1/50000 dilution

- Lane 1 :** A431 whole cell lysate
- Lane 2 :** A549 whole cell lysate
- Lane 3 :** Caco-2 whole cell lysate
- Lane 4 :** T47D whole cell lysate
- Lane 5 :** C2C12 whole cell lysate
- Lane 6 :** HeLa whole cell lysate

Lysates/proteins at 10 µg per lane.

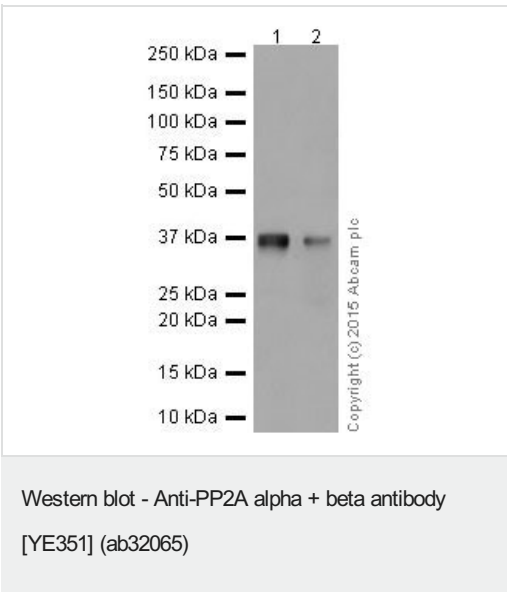
**Secondary**

**All lanes :** Peroxidase-conjugated goat anti-rabbit IgG (H+L) at 1/1000 dilution

**Predicted band size:** 36 kDa  
**Observed band size:** 36 kDa

**Exposure time:** 15 seconds

Blocking and dilution buffer: 5% NFDM/TBST.



**All lanes :** Anti-PP2A alpha + beta antibody [YE351] (ab32065) at 1/50000 dilution

- Lane 1 :** Jurkat whole cell lysate
- Lane 2 :** U-937 whole cell lysate

Lysates/proteins at 10 µg per lane.

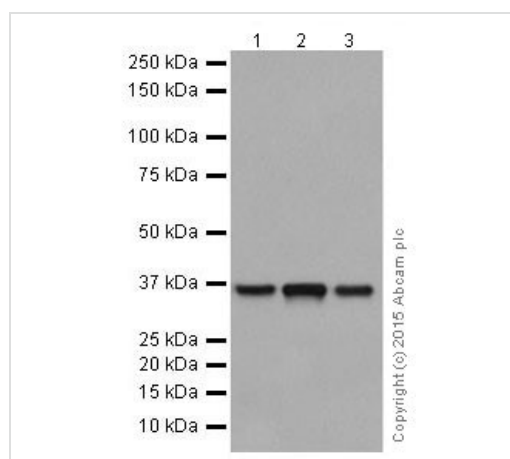
**Secondary**

**All lanes :** Peroxidase-conjugated goat anti-rabbit IgG (H+L) at 1/1000 dilution

**Predicted band size:** 36 kDa  
**Observed band size:** 36 kDa

**Exposure time:** 5 seconds

Blocking and dilution buffer: 5% NFDM/TBST.



Western blot - Anti-PP2A alpha + beta antibody [YE351] (ab32065)

**All lanes** : Anti-PP2A alpha + beta antibody [YE351] (ab32065) at 1/100000 dilution

**Lane 1** : Human fetal heart tissue lysate

**Lane 2** : Human fetal kidney tissue lysate

**Lane 3** : Human fetal spleen tissue lysate

Lysates/proteins at 10 µg per lane.

### Secondary

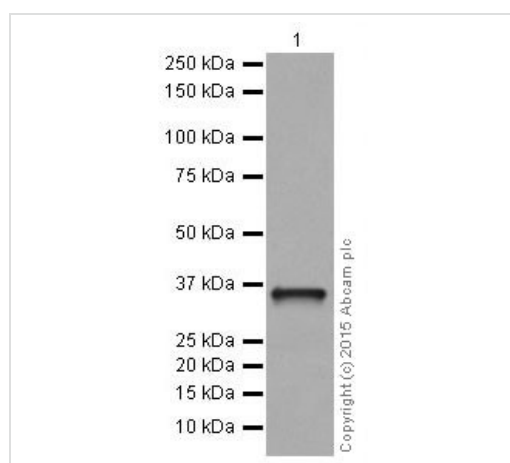
**All lanes** : HRP-conjugated anti-rabbit IgG, specific to the non-reduced form of IgG at 1/1000 dilution

**Predicted band size:** 36 kDa

**Observed band size:** 36 kDa

**Exposure time:** 30 seconds

Blocking and dilution buffer: 5% NFDM/TBST.



Western blot - Anti-PP2A alpha + beta antibody [YE351] (ab32065)

Anti-PP2A alpha + beta antibody [YE351] (ab32065) at 1/100000 dilution + Human fetal brain tissue lysate at 10 µg

### Secondary

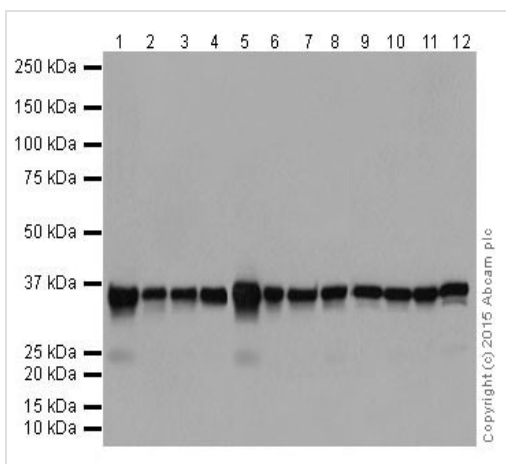
HRP-conjugate anti-rabbit IgG, specific to the non-reduced form of IgG at 1/1000 dilution

**Predicted band size:** 36 kDa

**Observed band size:** 36 kDa

**Exposure time:** 15 seconds

Blocking and dilution buffer: 5% NFDM /TBST.



Western blot - Anti-PP2A alpha + beta antibody  
[YE351] (ab32065)

**All lanes :** Anti-PP2A alpha + beta antibody [YE351] (ab32065) at  
1/100000 dilution

**Lane 1 :** Mouse brain tissue lysate

**Lane 2 :** Mouse heart tissue lysate

**Lane 3 :** Mouse kidney tissue lysate

**Lane 4 :** Mouse spleen tissue lysate

**Lane 5 :** Rat brain tissue lysate

**Lane 6 :** Rat heart tissue lysate

**Lane 7 :** Rat kidney tissue lysate

**Lane 8 :** Rat spleen tissue lysate

**Lane 9 :** C6 whole cell lysate

**Lane 10 :** Raw264.7 whole cell lysate

**Lane 11 :** PC-12 whole cell lysate

**Lane 12 :** NIH/3T3 whole cell lysate

Lysates/proteins at 10 µg per lane.

### Secondary

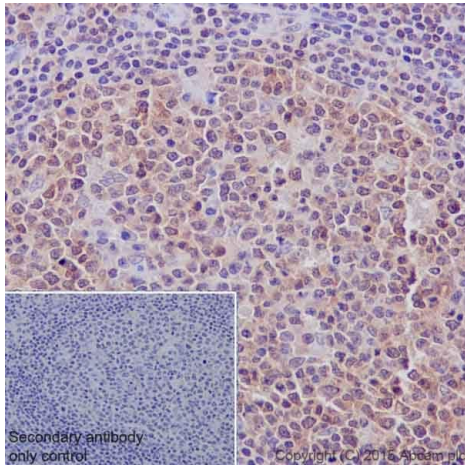
**All lanes :** Peroxidase-conjugated goat anti-rabbit IgG (H+L) at  
1/1000 dilution

**Predicted band size:** 36 kDa

**Observed band size:** 36 kDa

**Exposure time:** 1 second

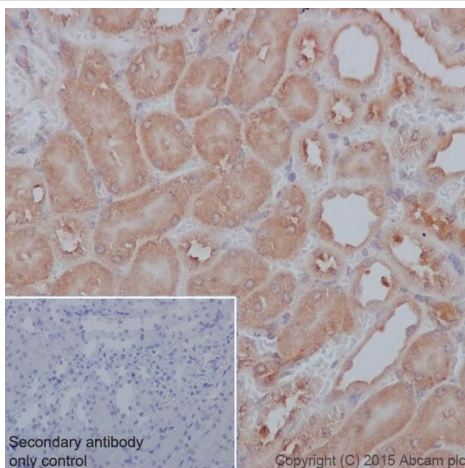
Blocking and dilution buffer: 5% NFDM /TBST.



Immunohistochemistry (Formalin/PFA-fixed paraffin-embedded sections) - Anti-PP2A alpha + beta antibody [YE351] (ab32065)

Immunohistochemistry (Formalin/PFA-fixed paraffin-embedded sections) analysis of human tonsil tissue labeling PP2A alpha + beta with ab32065 at a dilution of 1/100. Heat mediated antigen retrieval was performed using Tris/EDTA buffer pH 9. [ab97051](#), a HRP-conjugated goat anti-rabbit IgG (H+L) was used as the secondary antibody (1/500). Negative control using PBS instead of primary antibody. Counterstained with hematoxylin.

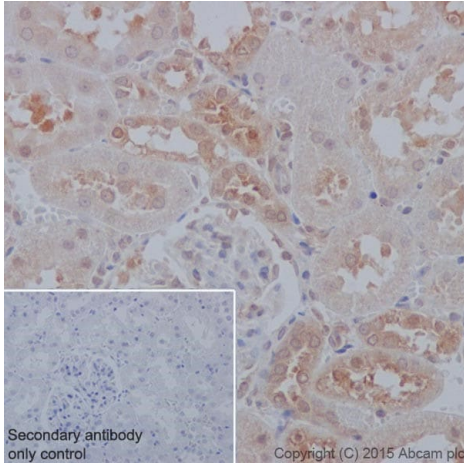
Cytoplasm and weak nucleus staining is visible in lymphocytes of human tonsil.



Immunohistochemistry (Formalin/PFA-fixed paraffin-embedded sections) - Anti-PP2A alpha + beta antibody [YE351] (ab32065)

Immunohistochemistry (Formalin/PFA-fixed paraffin-embedded sections) analysis of mouse kidney tissue labelling PP2A alpha + beta with ab32065 at a dilution of 1/100. Heat mediated antigen retrieval was performed using Tris/EDTA buffer pH 9. [ab97051](#), a HRP-conjugated goat anti-rabbit IgG (H+L) was used as the secondary antibody (1/500). Negative control using PBS instead of primary antibody. Counterstained with hematoxylin.

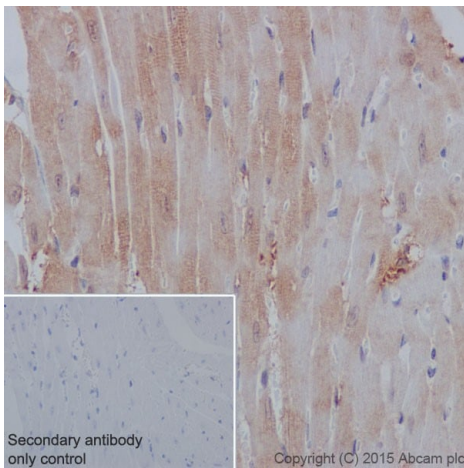
Cytoplasm staining is visible in epithelial cells of mouse kidney



Immunohistochemistry (Formalin/PFA-fixed paraffin-embedded sections) - Anti-PP2A alpha + beta antibody [YE351] (ab32065)

Immunohistochemistry (Formalin/PFA-fixed paraffin-embedded sections) analysis of rat kidney tissue labelling PP2A alpha + beta with ab32065 at a dilution of 1/100. Heat mediated antigen retrieval was performed using Tris/EDTA buffer pH 9. [ab97051](#), a HRP-conjugated goat anti-rabbit IgG (H+L) was used as the secondary antibody (1/500). Negative control using PBS instead of primary antibody. Counterstained with hematoxylin.

Cytoplasm and weak nucleus staining is visible in epithelial cells of rat kidney.

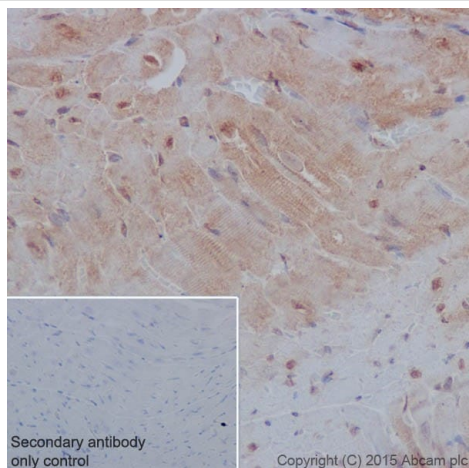


Immunohistochemistry (Formalin/PFA-fixed paraffin-embedded sections) - Anti-PP2A alpha + beta antibody [YE351] (ab32065)

Immunohistochemistry (Formalin/PFA-fixed paraffin-embedded sections) analysis of mouse heart tissue labelling PP2A alpha + beta with ab32065 at a dilution of 1/100. Heat mediated antigen retrieval was performed using Tris/EDTA buffer pH 9. [ab97051](#), a HRP-conjugated goat anti-rabbit IgG (H+L) was used as the secondary antibody (1/500). Negative control using PBS instead of primary antibody. Counterstained with hematoxylin.

Cytoplasm staining is visible in mouse heart.

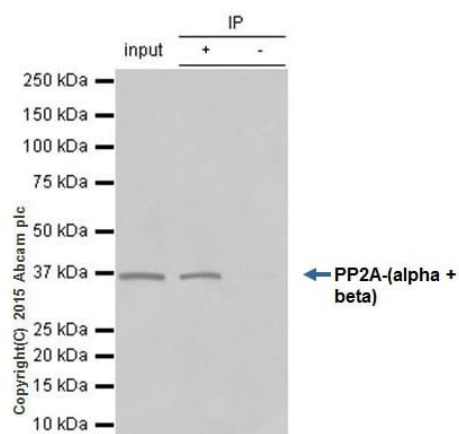




Immunohistochemistry (Formalin/PFA-fixed paraffin-embedded sections) - Anti-PP2A alpha + beta antibody [YE351] (ab32065)

Immunohistochemistry (Formalin/PFA-fixed paraffin-embedded sections) analysis of rat heart tissue labelling PP2A alpha + beta with ab32065 at a dilution of 1/100. Heat mediated antigen retrieval was performed using Tris/EDTA buffer pH 9. [ab97051](#), a HRP-conjugated goat anti-rabbit IgG (H+L) was used as the secondary antibody (1/500). Negative control using PBS instead of primary antibody. Counterstained with hematoxylin.

Cytoplasm and nucleus staining is visible on rat heart.



Immunoprecipitation - Anti-PP2A alpha + beta antibody [YE351] (ab32065)

ab32065 at 1/80 immunoprecipitating PP2A alpha + beta in HeLa whole cell lysate.

Lane 1 (input): HeLa whole cell lysate (10µg)

Lane 2 (+): ab32065 + HeLa whole cell lysate.

Lane 3 (-): Rabbit monoclonal IgG ([ab172730](#)) instead of ab32065 in HeLa (human cervix adenocarcinoma) whole cell lysate.

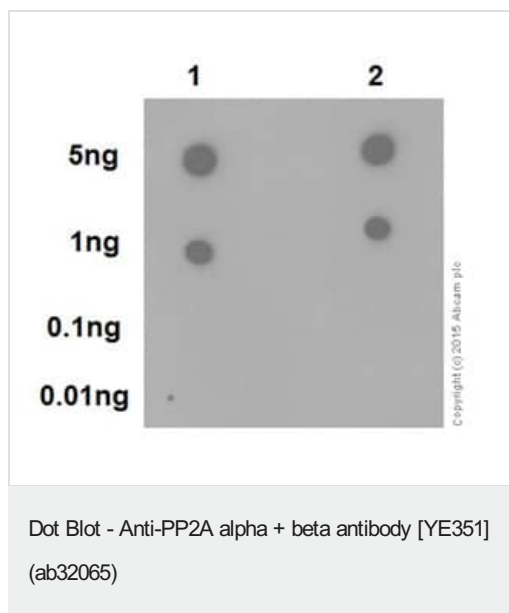
For western blotting, ab32065 (1/500) [ab131366](#) VeriBlot for IP Detection Reagent (HRP) was used for detection (1/10000).

Blocking buffer and concentration: 5% NFDM/TBST.

Diluting buffer and concentration: 5% NFDM /TBST.

Observed band: 37kDa.









Dot blot analysis of PP2A-alpha peptide (Lane 1) and PP2A-beta peptide (Lane 2) labelling PP2A alpha+beta with ab32065 at a dilution of 1/1000. A HRP-conjugated anti-rabbit IgG, specific to the non-reduced form of IgG was used as the secondary antibody at a dilution of 1/1000.

Blocking and dilution buffer: 5% NFDM/TBST.

Exposure time: 3 minutes.

Why choose a recombinant antibody?

 <p><b>Research with confidence</b> Consistent and reproducible results</p>	 <p><b>Long-term and scalable supply</b> Recombinant technology</p>
 <p><b>Success from the first experiment</b> Confirmed specificity</p>	 <p><b>Ethical standards compliant</b> Animal-free production</p>

Anti-PP2A alpha + beta antibody [YE351] (ab32065)

**Please note:** All products are "FOR RESEARCH USE ONLY. NOT FOR USE IN DIAGNOSTIC PROCEDURES"

### Our Abpromise to you: Quality guaranteed and expert technical support

- Replacement or refund for products not performing as stated on the datasheet
- Valid for 12 months from date of delivery
- Response to your inquiry within 24 hours
- We provide support in Chinese, English, French, German, Japanese and Spanish
- Extensive multi-media technical resources to help you
- We investigate all quality concerns to ensure our products perform to the highest standards

If the product does not perform as described on this datasheet, we will offer a refund or replacement. For full details of the Abpromise, please visit <https://www.abcam.co.jp/abpromise> or contact our technical team.

### Terms and conditions

- 
- Guarantee only valid for products bought direct from Abcam or one of our authorized distributors