


Anti-PP1C gamma antibody [EPR8934] ab134947

KO 評価済 リコンビナント RabMAb

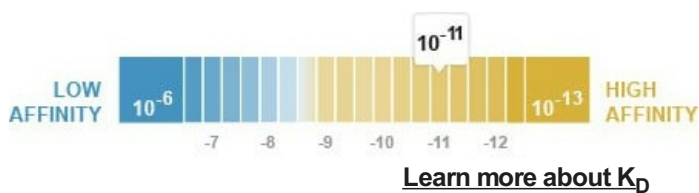
3 References 画像数 4

製品の概要

| | |
|--------------|---|
| 製品名 | Anti-PP1C gamma antibody [EPR8934] |
| 製品の詳細 | Rabbit monoclonal [EPR8934] to PP1C gamma |
| 由来種 | Rabbit |
| アプリケーション | 適用あり: WB 適用なし: Flow Cyt, ICC/IF or IHC-P |
| 種交差性 | 交差種: Human 交差が予測される動物種: Mouse, Rat  |
| 免疫原 | Synthetic peptide. This information is proprietary to Abcam and/or its suppliers. |
| ポジティブ・コントロール | 293T, HeLa, SKBR3 and T47D cell lysates. |
| 特記事項 | <p>This product is a recombinant monoclonal antibody, which offers several advantages including:</p> <ul style="list-style-type: none"> - High batch-to-batch consistency and reproducibility - Improved sensitivity and specificity - Long-term security of supply - Animal-free production <p>For more information see here.</p> <p>Our RabMAb® technology is a patented hybridoma-based technology for making rabbit monoclonal antibodies. For details on our patents, please refer to RabMAb® patents.</p> |

製品の特性

| | |
|-------------------------|---|
| 製品の状態 | Liquid |
| 保存方法 | Shipped at 4°C. Store at -20°C. |
| 解離定数 (K _D 値) | K _D = 4.20 x 10 ⁻¹¹ M |



| | |
|-------|---------|
| バッファー | pH: 7.2 |
|-------|---------|

| | |
|--------|---|
| | Preservative: 0.01% Sodium azide |
| | Constituents: 9% PBS, 40% Glycerol (glycerin, glycerine), 0.05% BSA, 50% Tissue culture supernatant |
| 精製度 | Tissue culture supernatant |
| ポリ/モノ | モノクローナル |
| クローン名 | EPR8934 |
| アイソタイプ | IgG |

アプリケーション

The Abpromise guarantee **Abpromise保証は、**次のテスト済みアプリケーションにおけるab134947の使用に適用されます
アプリケーションノートには、推奨の開始希釈率がありますが、適切な希釈率につきましてはご検討ください。

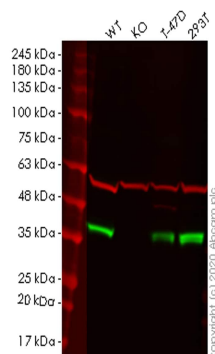
| アプリケーション | Abreviews | 特記事項 |
|----------|-----------|---|
| WB | | 1/1000 - 1/10000. Predicted molecular weight: 39 kDa. |

追加情報 Is unsuitable for Flow Cyt, ICC/IF or IHC-P.

ターゲット情報

| | |
|-------|--|
| 機能 | Protein phosphatase 1 (PP1) is essential for cell division, and participates in the regulation of glycogen metabolism, muscle contractility and protein synthesis. Involved in regulation of ionic conductances and long-term synaptic plasticity. May play an important role in dephosphorylating substrates such as the postsynaptic density-associated Ca(2+)/calmodulin dependent protein kinase II. Component of the PTW/PP1 phosphatase complex, which plays a role in the control of chromatin structure and cell cycle progression during the transition from mitosis into interphase. |
| 配列類似性 | Belongs to the PPP phosphatase family. PP-1 subfamily. |
| 細胞内局在 | Cytoplasm. Nucleus. Nucleus > nucleolus. Nucleus > nucleoplasm. Nucleus speckle. Chromosome > centromere > kinetochore. Cleavage furrow. Midbody. Colocalizes with SPZ1 in the nucleus (By similarity). Rapidly exchanges between the nucleolar, nucleoplasmic and cytoplasmic compartments. Highly mobile in cells and can be relocalized through interaction with targeting subunits. In the presence of PPP1R8 relocalizes from the nucleolus to nuclear speckles. Shows a dynamic targeting to specific sites throughout the cell cycle. Highly concentrated in nucleoli of interphase cells and localizes at kinetochores early in mitosis. Relocalization to chromosome-containing regions occurs at the transition from early to late anaphase. Also accumulates at the cleavage furrow and midbody by telophase. |

画像



Western blot - Anti-PP1C gamma antibody
[EPR8934] (ab134947)

All lanes : Anti-PP1C gamma antibody [EPR8934] (ab134947) at 1/1000 dilution

Lane 1 : Wild-type HeLa cell lysate

Lane 2 : PPP1CC knockout HeLa cell lysate

Lane 3 : T-47D cell lysate

Lane 4 : 293T cell lysate

Lysates/proteins at 20 µg per lane.

Secondary

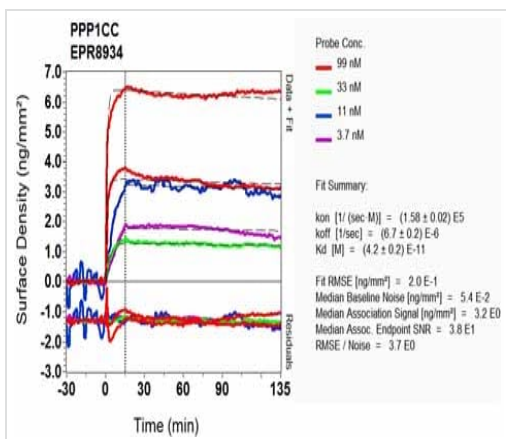
All lanes : Goat anti-Rabbit IgG H&L (IRDye® 800CW) preadsorbed ([ab216773](#)) at 1/10000 dilution

Predicted band size: 39 kDa

Observed band size: 37 kDa

Lanes 1-4: Merged signal (red and green). Green - ab134947 observed at 37 kDa. Red - loading control [ab7291](#) observed at 50 kDa.

ab134947 Anti-Protein phosphatase 1 gamma 2 antibody was shown to specifically react with Protein phosphatase 1 gamma 2 in wild-type HeLa cells. Loss of signal was observed when knockout cell line [ab264875](#) (knockout cell lysate [ab258131](#)) was used. Wild-type and Protein phosphatase 1 gamma 2 knockout samples were subjected to SDS-PAGE. ab134947 and Anti-alpha Tubulin antibody [DM1A] - Loading Control ([ab7291](#)) were incubated overnight at 4°C at 1 in 1000 dilution and 1 in 20000 dilution respectively. Blots were developed with Goat anti-Rabbit IgG H&L (IRDye® 800CW) preadsorbed ([ab216773](#)) and Goat anti-Mouse IgG H&L (IRDye® 680RD) preadsorbed ([ab216776](#)) secondary antibodies at 1 in 20000 dilution for 1 hour at room temperature before imaging.

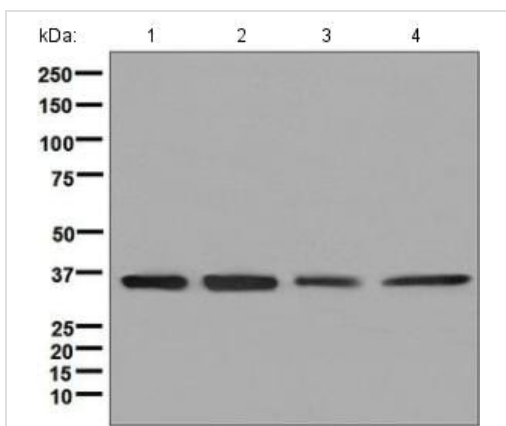


SPR Scanning - Anti-PP1C gamma antibody
[EPR8934] (ab134947)

Equilibrium dissociation constant (K_D)

Learn more about K_D

[Click here to learn more about \$K_D\$](#)



Western blot - Anti-PP1C gamma antibody
[EPR8934] (ab134947)

All lanes : Anti-PP1C gamma antibody [EPR8934] (ab134947) at
1/1000 dilution

Lane 1 : T47D cell lysate

Lane 2 : 293T cell lysate

Lane 3 : SKBR3 cell lysate

Lane 4 : HeLa cell lysate

Lysates/proteins at 10 µg per lane.

Secondary

All lanes : Standard HRP labelled goat anti-rabbit at 1/2000
dilution

Developed using the ECL technique.

Predicted band size: 39 kDa

Why choose a recombinant antibody?



Research with confidence
Consistent and reproducible results



Long-term and scalable supply
Recombinant technology



Success from the first experiment
Confirmed specificity



Ethical standards compliant
Animal-free production

Anti-PP1C gamma antibody [EPR8934] (ab134947)

Please note: All products are "FOR RESEARCH USE ONLY. NOT FOR USE IN DIAGNOSTIC PROCEDURES"

Our Abpromise to you: Quality guaranteed and expert technical support

- Replacement or refund for products not performing as stated on the datasheet
- Valid for 12 months from date of delivery
- Response to your inquiry within 24 hours
- We provide support in Chinese, English, French, German, Japanese and Spanish
- Extensive multi-media technical resources to help you
- We investigate all quality concerns to ensure our products perform to the highest standards

If the product does not perform as described on this datasheet, we will offer a refund or replacement. For full details of the Abpromise, please visit <https://www.abcam.co.jp/abpromise> or contact our technical team.

Terms and conditions

- Guarantee only valid for products bought direct from Abcam or one of our authorized distributors