

Anti-Polyethylene glycol antibody [RM105] ab190652

リコンビナント

1 References [画像数 3](#)

製品の概要

| | |
|--------------|---|
| 製品名 | Anti-Polyethylene glycol antibody [RM105] |
| 製品の詳細 | Rabbit monoclonal [RM105] to Polyethylene glycol |
| 由来種 | Rabbit |
| アプリケーション | 適用あり: ICC, WB, ELISA, IHC-P, Flow Cyt, IP |
| 免疫原 | Chemical/ Small Molecule corresponding to Polyethylene glycol conjugated to Keyhole Limpet Haemocyanin (KLH). (KLH-PEG with terminal methoxy group). |
| ポジティブ・コントロール | PEGylated BSA. |
| 特記事項 | <p>Tween 20 usage: Tween 20 is a detergent that can interfere with ELISA and potentially other applications (often used in antibody dilution buffers, such as TBST) when using anti-PEG products. Our anti-mPEG antibody (RM105) reacts to the methoxy group of Polyethylene glycol (PEG). There is no methoxy group in Tween 20, which should not interfere with the function of this antibody. This detergent can safely be used in ELISA assays.</p> <p>Learn more about PEG RabMAb products and kit - PEG RabMAb Product Portal Page</p> |

製品の特性

| | |
|-----------|---|
| 製品の状態 | Liquid |
| 保存方法 | Shipped at 4°C. Store at +4°C short term (1-2 weeks). Upon delivery aliquot. Store at -20°C long term. Avoid freeze / thaw cycle. |
| バッファー | <p>Preservative: 0.09% Sodium azide</p> <p>Constituents: 1% BSA, 48% PBS, 50% Glycerol (glycerin, glycerine)</p> |
| 精製度 | Protein A purified |
| 特記事項 (精製) | ab190652 was purified from an animal origin-free and protein-free culture supernatant. |
| ポリ/モノ | モノクローナル |
| クローン名 | RM105 |
| アイソタイプ | IgG |

アプリケーション

The Abpromise guarantee Abpromise保証は、 次のテスト済みアプリケーションにおけるab190652の使用に適用されます
アプリケーションノートには、推奨の開始希釈率がありますが、適切な希釈率につきましてはご検討ください。

| アプリケーション | Abreviews | 特記事項 |
|----------|-----------|--|
| ICC | | Use at an assay dependent concentration. |
| WB | | Use a concentration of 0.05 - 1 µg/ml. |
| ELISA | | Use a concentration of 0.01 - 0.3 mg/ml. |
| IHC-P | | Use a concentration of 0.5 - 2 µg/ml. |
| Flow Cyt | | Use at an assay dependent concentration. ab172730 - Rabbit monoclonal IgG, is suitable for use as an isotype control with this antibody. |
| IP | | Use at an assay dependent concentration. |

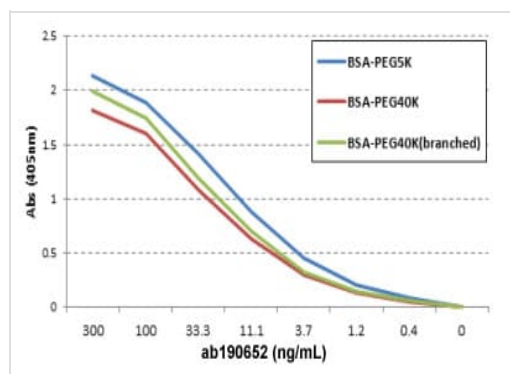
ターゲット情報

画像



All lanes : Anti-Polyethylene glycol antibody [RM105] (ab190652)
at 0.1 µg/ml

- Lane 1 :** BSA at 0.2 µg
- Lane 2 :** PEGylated BSA at 0.2 µg
- Lane 3 :** BSA at 0.1 µg
- Lane 4 :** PEGylated BSA at 0.1 µg
- Lane 5 :** BSA at 0.05 µg
- Lane 6 :** PEGylated BSA at 0.05 µg
- Lane 7 :** BSA at 0.02 µg
- Lane 8 :** PEGylated BSA at 0.02 µg
- Lane 9 :** BSA at 0.01 µg
- Lane 10 :** PEGylated BSA at 0.01 µg



ELISA of three different PEGylated BSA using ab190652 at 0.3 µg/ml, following AP conjugated goat anti-rabbit IgG.

ELISA - Anti-Polyethylene glycol antibody [RM105]
(ab190652)

Why choose a recombinant antibody?

Research with confidence
Consistent and reproducible results

Long-term and scalable supply
Recombinant technology

Success from the first experiment
Confirmed specificity

Ethical standards compliant
Animal-free production

Anti-Polyethylene glycol antibody [RM105]
(ab190652)

Please note: All products are "FOR RESEARCH USE ONLY. NOT FOR USE IN DIAGNOSTIC PROCEDURES"

Our Abpromise to you: Quality guaranteed and expert technical support

- Replacement or refund for products not performing as stated on the datasheet
- Valid for 12 months from date of delivery
- Response to your inquiry within 24 hours
- We provide support in Chinese, English, French, German, Japanese and Spanish

- Extensive multi-media technical resources to help you
- We investigate all quality concerns to ensure our products perform to the highest standards

If the product does not perform as described on this datasheet, we will offer a refund or replacement. For full details of the Abpromise, please visit <https://www.abcam.co.jp/abpromise> or contact our technical team.

Terms and conditions

- Guarantee only valid for products bought direct from Abcam or one of our authorized distributors