

Anti-Poliovirus Receptor/PVR antibody [EPR22672-151] ab267788

KO 評価済 リコンビナント RabMAb

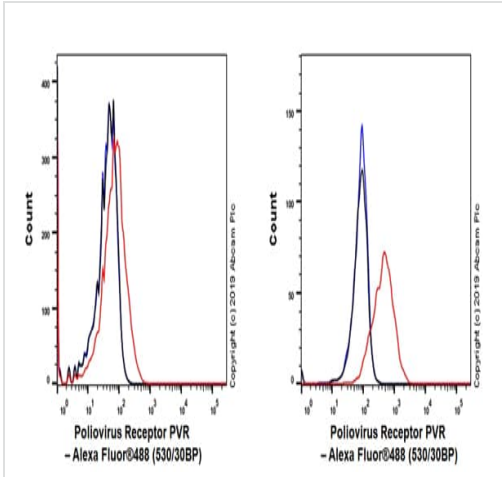
1 References 画像数 8

製品の概要

製品名	Anti-Poliovirus Receptor/PVR antibody [EPR22672-151]
製品の詳細	Rabbit monoclonal [EPR22672-151] to Poliovirus Receptor/PVR
由来種	Rabbit
アプリケーション	適用あり: WB, IHC-P, Flow Cyt 適用なし: ICC/IF or IP
種交差性	交差種: Human
免疫原	Recombinant fragment. This information is proprietary to Abcam and/or its suppliers.
ポジティブ・コントロール	IHC-P: Human breast cancer, lung cancer and colon cancer tissue. Flow Cyt: A549 cells. WB: HEK293T, A549, WI-38, HT-1080, U-87 MG, HUVEC and MCF7 whole cell lysate.
特記事項	This product is a recombinant monoclonal antibody, which offers several advantages including: <ul style="list-style-type: none">- High batch-to-batch consistency and reproducibility- Improved sensitivity and specificity- Long-term security of supply- Animal-free production For more information see here . Our RabMAb [®] technology is a patented hybridoma-based technology for making rabbit monoclonal antibodies. For details on our patents, please refer to RabMAb[®] patents .

製品の特性

製品の状態	Liquid
保存方法	Shipped at 4°C. Store at +4°C short term (1-2 weeks). Upon delivery aliquot. Store at -20°C long term. Avoid freeze / thaw cycle.
バッファー	pH: 7.2 Preservative: 0.01% Sodium azide Constituents: PBS, 0.05% BSA, 40% Glycerol (glycerin, glycerine)
精製度	Protein A purified
ポリ/モノ	モノクローナル

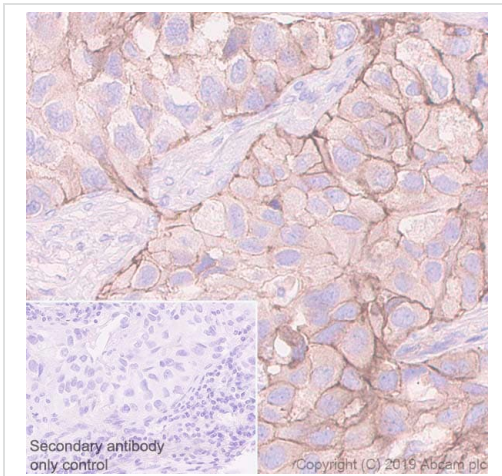


Flow Cytometry - Anti-Poliovirus Receptor/PVR antibody [EPR22672-151] (ab267788)

Flow cytometric analysis of Raji (Human Burkitt's lymphoma B lymphocyte) (Left panel) and A549 (Human lung carcinoma epithelial cell) (Right panel) labeling Poliovirus Receptor/PVR with ab267788 at 1/50 dilution (Red) compared with a Rabbit monoclonal IgG (**ab172730**) / Black isotype control and an unlabeled control (cells without incubation with primary antibody and secondary antibody) (Blue). A Goat anti rabbit IgG (Alexa Fluor[®] 488, **ab150077**) at 1/2000 dilution was used as the secondary antibody.

Negative control: Raji (PMID:31500665).

Gated on viable cells.

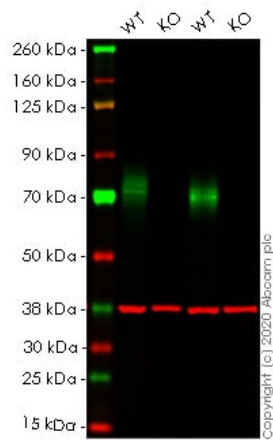


Immunohistochemistry (Formalin/PFA-fixed paraffin-embedded sections) - Anti-Poliovirus Receptor/PVR antibody [EPR22672-151] (ab267788)

Immunohistochemical analysis of paraffin-embedded human lung cancer tissue labeling Poliovirus Receptor/PVR with ab267788 at 1/500 dilution (1.01 µg/ml) followed by a ready to use Goat Anti-Rabbit IgG H&L (HRP). Positive staining in human lung cancer (PMID:20331633). Counterstained with hematoxylin.

Secondary antibody only control: Secondary antibody is a ready to use Goat Anti-Rabbit IgG H&L (HRP).

Heat mediated antigen retrieval using **ab93684** (Tris/EDTA buffer, pH 9.0).



Western blot - Anti-Poliovirus Receptor/PVR antibody [EPR22672-151] (ab267788)

All lanes : Anti-Poliovirus Receptor/PVR antibody [EPR22672-151] (ab267788) at 1/1000 dilution

Lane 1 : Wild-type HEK-293T cell lysate

Lane 2 : PVR knockout HEK-293T cell lysate

Lane 3 : Wild-type A549 cell lysate

Lane 4 : PVR knockout A549 cell lysate

Lysates/proteins at 20 µg per lane.

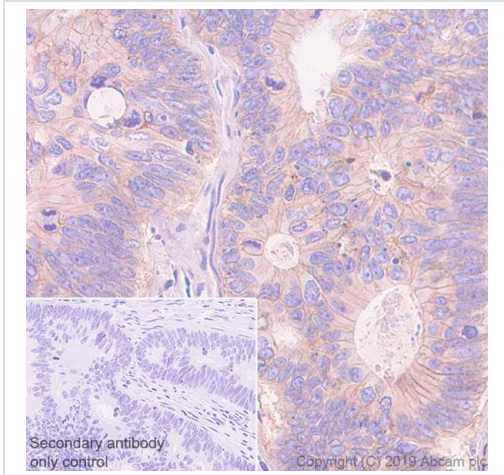
Performed under reducing conditions.

Predicted band size: 45 kDa

Observed band size: 70 kDa

Lanes 1- 4: Merged signal (red and green). Green - ab267788 observed at 70 kDa. Red - Anti-GAPDH antibody [6C5] - Loading Control ([ab8245](#)) observed at 37 kDa.

ab267788 was shown to react with Poliovirus Receptor/PVR in wild-type HEK-293T cells in western blot. Loss of signal was observed when knockout cell line [ab266102](#) (knockout cell lysate [ab257622](#)) was used. Wild-type HEK-293T and PVR knockout HEK-293T cell lysates were subjected to SDS-PAGE. Membrane was blocked for 1 hour at room temperature in 0.1% TBST with 3% non-fat dried milk. ab267788 and Anti-GAPDH antibody [6C5] - Loading Control ([ab8245](#)) overnight at 4°C at a 1 in 1000 dilution and a 1 in 20000 dilution respectively. Blots were developed with Goat anti-Rabbit IgG H&L (IRDye®800CW) preadsorbed ([ab216773](#)) and Goat anti-Mouse IgG H&L (IRDye®680RD) preadsorbed ([ab216776](#)) secondary antibodies at 1 in 20000 dilution for 1 hour at room temperature before imaging.

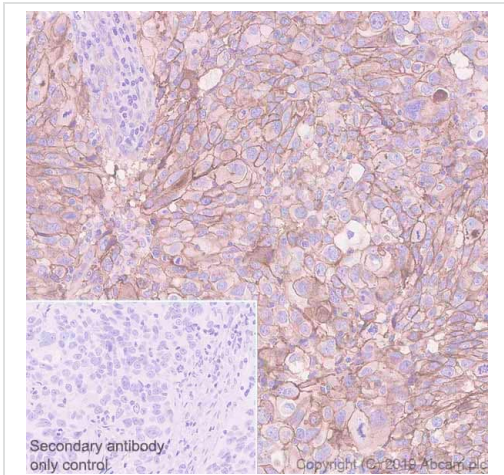


Immunohistochemistry (Formalin/PFA-fixed paraffin-embedded sections) - Anti-Poliovirus Receptor/PVR antibody [EPR22672-151] (ab267788)

Immunohistochemical analysis of paraffin-embedded human colon cancer tissue labeling Poliovirus Receptor/PVR with ab267788 at 1/500 dilution (1.01 µg/ml) followed by a ready to use Goat Anti-Rabbit IgG H&L (HRP). Positive staining in human colon cancer (PMID: 28816021,11454801). Counterstained with hematoxylin.

Secondary antibody only control: Secondary antibody is a ready to use Goat Anti-Rabbit IgG H&L (HRP).

Heat mediated antigen retrieval using **ab93684** (Tris/EDTA buffer, pH 9.0).

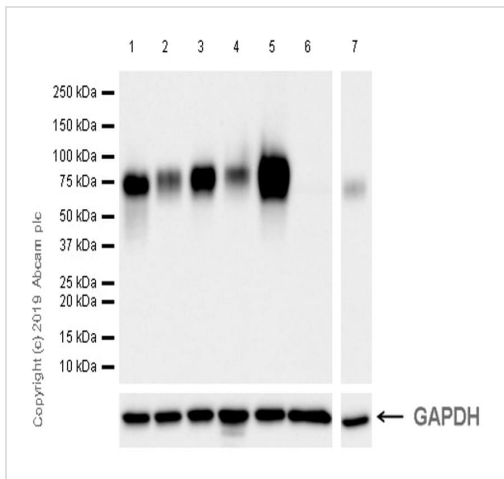


Immunohistochemistry (Formalin/PFA-fixed paraffin-embedded sections) - Anti-Poliovirus Receptor/PVR antibody [EPR22672-151] (ab267788)

Immunohistochemical analysis of paraffin-embedded human breast cancer tissue labeling Poliovirus Receptor/PVR with ab267788 at 1/500 dilution (1.01 µg/ml) followed by a ready to use Goat Anti-Rabbit IgG H&L (HRP). Positive staining in human breast cancer (PMID:31035013). Counterstained with hematoxylin.

Secondary antibody only control: Secondary antibody is a ready to use Goat Anti-Rabbit IgG H&L (HRP).

Heat mediated antigen retrieval using **ab93684** (Tris/EDTA buffer, pH 9.0).



Western blot - Anti-Poliovirus Receptor/PVR antibody [EPR22672-151] (ab267788)

All lanes : Anti-Poliovirus Receptor/PVR antibody [EPR22672-151] (ab267788) at 1/1000 dilution

Lane 1 : A549 (human lung carcinoma epithelial cell), whole cell lysate

Lane 2 : WI-38 (human fetal lung fibroblast), whole cell lysate

Lane 3 : HT-1080 (human fibrosarcoma epithelial cell), whole cell lysate

Lane 4 : U-87 MG (human glioblastoma-astrocytoma epithelial cell), whole cell lysate

Lane 5 : HUVEC (human umbilical vein endothelial cell), whole cell lysate

Lane 6 : Raji (human Burkitt's lymphoma B lymphocyte), whole cell lysate

Lane 7 : MCF7 (human breast adenocarcinoma epithelial cell), whole cell lysate

Lysates/proteins at 20 µg per lane.

Secondary

All lanes : Goat Anti-Rabbit IgG H&L (HRP) (**ab97051**) at 1/100000 dilution

Predicted band size: 45 kDa

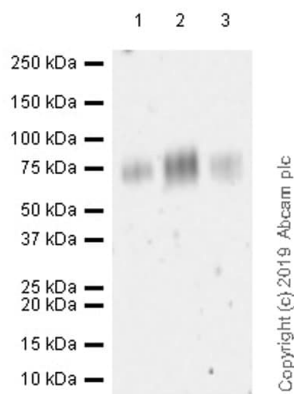
Observed band size: 70 kDa

Blocking and dilution buffer: 5% NFDm/TBST.

Exposure time: 10 seconds.

Negative control: Raji (PMID: 28829151, 31500665).

PVR/CD155 is a glycoprotein. The molecular weight observed is consistent with what has been described in the literature (PMID:17893876,11454801).



Western blot - Anti-Poliovirus Receptor/PVR antibody [EPR22672-151] (ab267788)

All lanes : Anti-Poliovirus Receptor/PVR antibody [EPR22672-151] (ab267788) at 1/1000 dilution

Lane 1 : Human placenta lysate

Lane 2 : Human lung cancer lysate

Lane 3 : Human colon cancer lysate

Lysates/proteins at 20 µg per lane.

Secondary

All lanes : VeriBlot for IP Detection Reagent (HRP) (**ab131366**) at 1/2000 dilution

Predicted band size: 45 kDa

Observed band size: 70 kDa





Blocking and dilution buffer: 5% NFDM/TBST.

Exposure time: 3 minutes.

PVR/CD155 is a glycoprotein. The molecular weight observed is consistent with what has been described in the literature (PMID:17893876,11454801).

This blot was developed using a higher sensitivity ECL substrate.

Why choose a recombinant antibody?

 <p>Research with confidence Consistent and reproducible results</p>	 <p>Long-term and scalable supply Recombinant technology</p>
 <p>Success from the first experiment Confirmed specificity</p>	 <p>Ethical standards compliant Animal-free production</p>

Anti-Poliovirus Receptor/PVR antibody [EPR22672-151] (ab267788)

Our Abpromise to you: Quality guaranteed and expert technical support

- Replacement or refund for products not performing as stated on the datasheet
- Valid for 12 months from date of delivery
- Response to your inquiry within 24 hours

- We provide support in Chinese, English, French, German, Japanese and Spanish
- Extensive multi-media technical resources to help you
- We investigate all quality concerns to ensure our products perform to the highest standards

If the product does not perform as described on this datasheet, we will offer a refund or replacement. For full details of the Abpromise, please visit <https://www.abcam.co.jp/abpromise> or contact our technical team.

Terms and conditions

- Guarantee only valid for products bought direct from Abcam or one of our authorized distributors