

Anti-POLG antibody [EPR7296] - BSA and Azide free ab232583

リコンビナント **RabMAb**

画像数 3

製品の概要

製品名	Anti-POLG antibody [EPR7296] - BSA and Azide free
製品の詳細	Rabbit monoclonal [EPR7296] to POLG - BSA and Azide free
由来種	Rabbit
アプリケーション	適用あり: WB
種交差性	交差種: Mouse, Rat, Human
免疫原	Synthetic peptide. This information is proprietary to Abcam and/or its suppliers.
ポジティブ・コントロール	WB: HepG2 and HEK-293T cell lysate.
特記事項	<p>ab232583 is the carrier-free version of ab128899.</p> <p>Our carrier-free antibodies are typically supplied in a PBS-only formulation, purified and free of BSA, sodium azide and glycerol. The carrier-free buffer and high concentration allow for increased conjugation efficiency.</p> <p>This conjugation-ready format is designed for use with fluorochromes, metal isotopes, oligonucleotides, and enzymes, which makes them ideal for antibody labelling, functional and cell-based assays, flow-based assays (e.g. mass cytometry) and Multiplex Imaging applications.</p> <p>Use our conjugation kits for antibody conjugates that are ready-to-use in as little as 20 minutes with <1 minute hands-on-time and 100% antibody recovery: available for fluorescent dyes, HRP, biotin and gold.</p> <p>This product is compatible with the Maxpar[®] Antibody Labeling Kit from Fluidigm, without the need for antibody preparation. Maxpar[®] is a trademark of Fluidigm Canada Inc.</p> <p>This product is a recombinant monoclonal antibody, which offers several advantages including:</p> <ul style="list-style-type: none"> - High batch-to-batch consistency and reproducibility - Improved sensitivity and specificity - Long-term security of supply - Animal-free production <p>For more information see here.</p> <p>Our RabMAb[®] technology is a patented hybridoma-based technology for making rabbit monoclonal antibodies. For details on our patents, please refer to RabMAb[®] patents.</p>

製品の特性

製品の状態	Liquid
保存方法	Shipped at 4°C. Store at +4°C. Do Not Freeze.
バッファー	pH: 7.2 Constituent: PBS
キャリア・フリー	はい
精製度	Protein A purified
ポリモノ	モノクローナル
クローン名	EPR7296
アイソタイプ	IgG

アプリケーション

The Abpromise guarantee Abpromise保証は、 次のテスト済みアプリケーションにおけるab232583の使用に適用されます
アプリケーションノートには、推奨の開始希釈率がありますが、適切な希釈率につきましてはご検討ください。

アプリケーション	Abreviews	特記事項
WB		Use at an assay dependent concentration. Predicted molecular weight: 140 kDa.

ターゲット情報

機能	Involved in the replication of mitochondrial DNA.
関連疾患	<p>Defects in POLG are the cause of progressive external ophthalmoplegia with mitochondrial DNA deletions autosomal dominant type 1 (PEOA1) [MIM:157640]. Progressive external ophthalmoplegia is characterized by progressive weakness of ocular muscles and levator muscle of the upper eyelid. In a minority of cases, it is associated with skeletal myopathy, which predominantly involves axial or proximal muscles and which causes abnormal fatigability and even permanent muscle weakness. Ragged-red fibers and atrophy are found on muscle biopsy. A large proportion of chronic ophthalmoplegias are associated with other symptoms, leading to a multisystemic pattern of this disease. Additional symptoms are variable, and may include cataracts, hearing loss, sensory axonal neuropathy, ataxia, depression, hypogonadism, and parkinsonism.</p> <p>Defects in POLG are a cause of progressive external ophthalmoplegia with mitochondrial DNA deletions autosomal recessive (PEOB) [MIM:258450]. PEOB is a severe form of progressive external ophthalmoplegia. It is clinically more heterogeneous than the autosomal dominant forms. Can be more severe.</p> <p>Defects in POLG are a cause of sensory ataxic neuropathy dysarthria and ophthalmoparesis (SANDO) [MIM:607459]. SANDO is a clinically heterogeneous systemic disorder with variable features resulting from mitochondrial dysfunction. It shares phenotypic characteristics with autosomal recessive progressive external ophthalmoplegia and mitochondrial neurogastrointestinal encephalopathy syndrome. The clinical triad of symptoms consists of sensory ataxic, neuropathy, dysarthria, and ophthalmoparesis.</p> <p>Defects in POLG are a cause of Alpers-Huttenlocher syndrome (AHS) [MIM:203700]; also called Alpers diffuse degeneration of cerebral gray matter with hepatic cirrhosis. AHS is an autosomal recessive hepatocerebral syndrome. The typical course of AHS includes severe developmental</p>

delay, intractable seizures, liver failure, and death in childhood. Refractory seizures, cortical blindness, progressive liver dysfunction, and acute liver failure after exposure to valproic acid are considered diagnostic features. The neuropathological hallmarks of AHS are neuronal loss, spongiform degeneration, and astrocytosis of the visual cortex. Liver biopsy results show steatosis, often progressing to cirrhosis.

Defects in POLG are a cause of mitochondrial neurogastrointestinal encephalopathy syndrome (MNGIE) [MIM:603041]; also known as myoneurogastrointestinal encephalomyopathy. MNGIE is an autosomal recessive disease associated with multiple deletions of skeletal muscle mitochondrial DNA (MtDNA). It is clinically characterized by onset between the second and fifth decades of life, ptosis, progressive external ophthalmoplegia, gastrointestinal dysmotility (often pseudoobstruction), diffuse leukoencephalopathy, thin body habitus, peripheral neuropathy, and myopathy.

Defects in POLG are a cause of Leigh syndrome (LS) [MIM:256000]. LS is a severe neurological disorder characterized by bilaterally symmetrical necrotic lesions in subcortical brain regions.

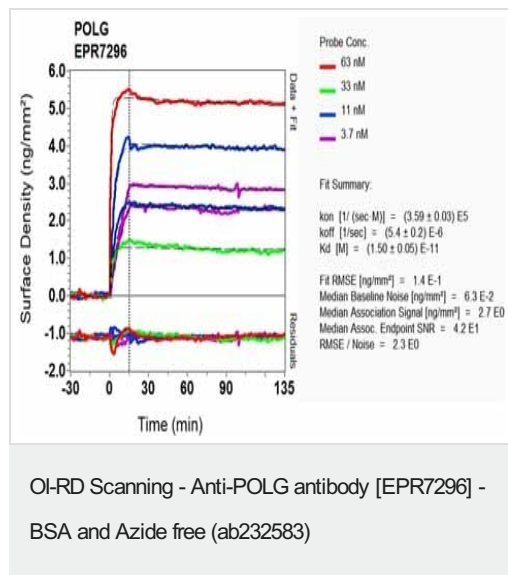
Belongs to the DNA polymerase type-A family.

Mitochondrion.

配列類似性

細胞内局在

画像

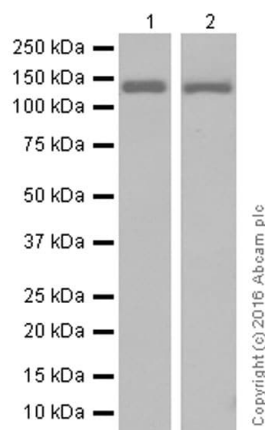


Equilibrium disassociation constant (K_D)

Learn more about K_D

[Click here to learn more about \$K_D\$](#)

This data was developed using the same antibody clone in a different buffer formulation containing PBS, BSA, glycerol, and sodium azide ([ab128899](#)).



Western blot - Anti-POLG antibody [EPR7296] - BSA and Azide free (ab232583)

All lanes : Anti-POLG antibody [EPR7296] ([ab128899](#)) at 1/5000 dilution (purified)

Lane 1 : HEK-293T (human embryonic kidney) whole cell lysate

Lane 2 : HepG2 (Human liver hepatocellular carcinoma cell line) whole cell lysate

Lysates/proteins at 20 µg per lane.

Secondary

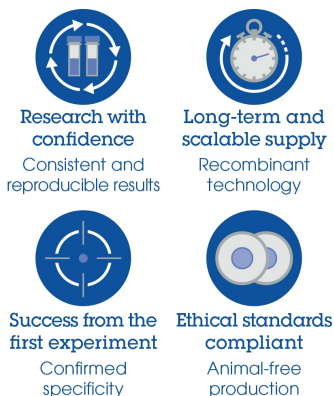
All lanes : Goat Anti-Rabbit IgG H&L (HRP) ([ab97051](#)) at 1/20000 dilution

Predicted band size: 140 kDa

Blocking and diluting buffer: 5% NFDM/TBST.

This data was developed using the same antibody clone in a different buffer formulation containing PBS, BSA, glycerol, and sodium azide ([ab128899](#)).

Why choose a recombinant antibody?



Anti-POLG antibody [EPR7296] - BSA and Azide free (ab232583)

Please note: All products are "FOR RESEARCH USE ONLY. NOT FOR USE IN DIAGNOSTIC PROCEDURES"

Our Promise to you: Quality guaranteed and expert technical support

- Replacement or refund for products not performing as stated on the datasheet
- Valid for 12 months from date of delivery

- Response to your inquiry within 24 hours
- We provide support in Chinese, English, French, German, Japanese and Spanish
- Extensive multi-media technical resources to help you
- We investigate all quality concerns to ensure our products perform to the highest standards

If the product does not perform as described on this datasheet, we will offer a refund or replacement. For full details of the Abpromise, please visit <https://www.abcam.co.jp/abpromise> or contact our technical team.

Terms and conditions

- Guarantee only valid for products bought direct from Abcam or one of our authorized distributors