

Anti-Podoplanin antibody [LpMab-7] ab256561

リコンビナント

画像数 4

製品の概要

製品名	Anti-Podoplanin antibody [LpMab-7]
製品の詳細	Mouse monoclonal [LpMab-7] to Podoplanin
由来種	Mouse
アプリケーション	適用あり: WB, IHC-P 適用なし: ICC/IF
種交差性	交差種: Human
免疫原	Tissue, cells or virus. This information is considered to be commercially sensitive.
ポジティブ・コントロール	WB: U-2 OS cell lysate. IHC-P: Human mesothelioma, Human placenta tissues.
特記事項	<p>This antibody clone is manufactured by Abcam. If you require a custom buffer formulation or conjugation for your experiments, please contact orders@abcam.com.</p> <p>This product is a recombinant monoclonal antibody, which offers several advantages including:</p> <ul style="list-style-type: none">- High batch-to-batch consistency and reproducibility- Improved sensitivity and specificity- Long-term security of supply- Animal-free production <p>For more information see here.</p>

製品の特性

製品の状態	Liquid
保存方法	Shipped at 4°C. Store at +4°C short term (1-2 weeks). Upon delivery aliquot. Store at -20°C long term. Avoid freeze / thaw cycle.
バッファー	pH: 7.2 Preservative: 0.01% Sodium azide Constituents: PBS, 40% Glycerol (glycerin, glycerine), 0.05% BSA
精製度	Protein A purified
ポリ/モノ	モノクローナル
クローン名	LpMab-7
アイソタイプ	IgG1

アプリケーション

The Abpromise guarantee **Abpromise保証は、**次のテスト済みアプリケーションにおけるab256561の使用に適用されます
アプリケーションノートには、推奨の開始希釈率がありますが、適切な希釈率につきましてはご検討ください。

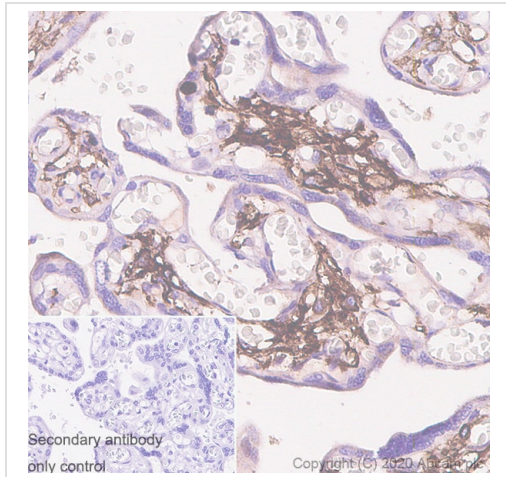
アプリケーション	Abreviews	特記事項
WB		1/1000. Predicted molecular weight: 16 kDa.
IHC-P		1/10000. Perform heat mediated antigen retrieval with Tris/EDTA buffer pH 9.0 before commencing with IHC staining protocol.

追加情報 Is unsuitable for ICC/IF.

ターゲット情報

機能	May be involved in cell migration and/or actin cytoskeleton organization. When expressed in keratinocytes, induces changes in cell morphology with transfected cells showing an elongated shape, numerous membrane protrusions, major reorganization of the actin cytoskeleton, increased motility and decreased cell adhesion. Required for normal lung cell proliferation and alveolus formation at birth. Induces platelet aggregation. Does not have any effect on folic acid or amino acid transport. Does not function as a water channel or as a regulator of aquaporin-type water channels.
組織特異性	Highly expressed in placenta, lung, skeletal muscle and brain. Weakly expressed in brain, kidney and liver. In placenta, expressed on the apical plasma membrane of endothelium. In lung, expressed in alveolar epithelium. Up-regulated in colorectal tumors and expressed in 25% of early oral squamous cell carcinomas.
配列類似性	Belongs to the podoplanin family.
翻訳後修飾	Extensively O-glycosylated. Contains sialic acid residues. O-glycosylation is necessary for platelet aggregation activity. The N-terminus is blocked.
細胞内局在	Membrane. Cell projection > filopodium membrane. Cell projection > lamellipodium membrane. Cell projection > microvillus membrane. Cell projection > ruffle membrane. Localized to actin-rich microvilli and plasma membrane projections such as filopodia, lamellipodia and ruffles.

画像

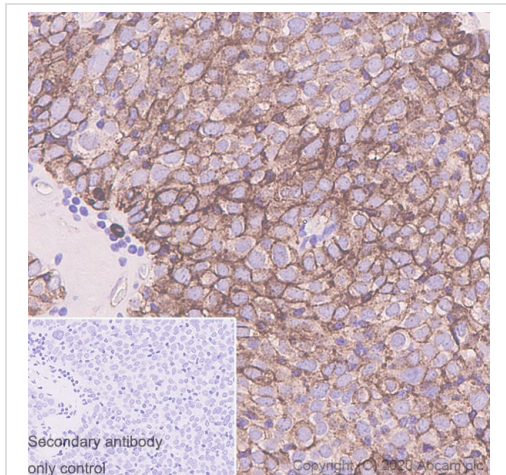


Immunohistochemistry (Formalin/PFA-fixed paraffin-embedded sections) - Mouse monoclonal [LpMab-7] to Podoplanin (ab256561)

Immunohistochemical analysis of paraffin-embedded Human placenta tissue labeling Podoplanin with ab256561 at 1/10000 dilution, detected using Leica DS9800 (Bond™ Polymer Refine Detection). Positive staining on the vessels in the human placenta. The section was incubated with ab256561 for 30 mins at room temperature. The immunostaining was performed on a Leica Biosystems BOND® RX instrument Counterstained with Hematoxylin.

Secondary antibody only control: Leica DS9800 (Bond™ Polymer Refine Detection).

Heat mediated antigen retrieval with Citrate buffer (pH 6.0, epitope retrieval solution 1) for 20 mins

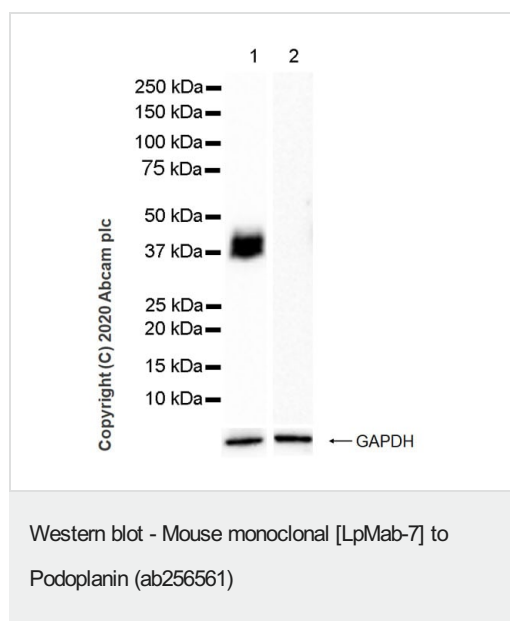


Immunohistochemistry (Formalin/PFA-fixed paraffin-embedded sections) - Mouse monoclonal [LpMab-7] to Podoplanin (ab256561)

Immunohistochemical analysis of paraffin-embedded Human mesothelioma tissue labeling Podoplanin with ab256561 at 1/10000 dilution, detected using Leica DS9800 (Bond™ Polymer Refine Detection). Membranous staining on human mesothelioma. The section was incubated with ab256561 for 30 mins at room temperature. The immunostaining was performed on a Leica Biosystems BOND® RX instrument Counterstained with Hematoxylin.

Secondary antibody only control: Leica DS9800 (Bond™ Polymer Refine Detection).

Heat mediated antigen retrieval with Citrate buffer (pH 6.0, epitope retrieval solution 1) for 20 mins.



All lanes : Anti-Podoplanin antibody [LpMab-7] (ab256561) at 1/1000 dilution

Lane 1 : U-2 OS (human bone osteosarcoma epithelial cell), whole cell lysate

Lane 2 : HUVEC (human umbilical vein endothelial cell), whole cell lysate

Lysates/proteins at 20 µg per lane.

Secondary

All lanes : Peroxidase-Conjugated Goat anti-Mouse IgG (H+L) at 1/10000 dilution

Predicted band size: 16 kDa

Observed band size: 40 kDa

Blocking and diluting buffer and concentration: 5% NFDM/TBST

The molecular weight observed is consistent with what has been described in the literature (PMID: 25080943; PMID: 26090595; PMID: 26416352).

Negative control: HUVEC (PMID: 21920451)

Exposure time: 20 seconds

Why choose a recombinant antibody?



Research with confidence
Consistent and reproducible results



Long-term and scalable supply
Recombinant technology



Success from the first experiment
Confirmed specificity



Ethical standards compliant
Animal-free production

Mouse monoclonal [LpMab-7] to Podoplanin
(ab256561)

Please note: All products are "FOR RESEARCH USE ONLY. NOT FOR USE IN DIAGNOSTIC PROCEDURES"

Our Abpromise to you: Quality guaranteed and expert technical support

- Replacement or refund for products not performing as stated on the datasheet
- Valid for 12 months from date of delivery
- Response to your inquiry within 24 hours
- We provide support in Chinese, English, French, German, Japanese and Spanish
- Extensive multi-media technical resources to help you
- We investigate all quality concerns to ensure our products perform to the highest standards

If the product does not perform as described on this datasheet, we will offer a refund or replacement. For full details of the Abpromise, please visit <https://www.abcam.co.jp/abpromise> or contact our technical team.

Terms and conditions

- Guarantee only valid for products bought direct from Abcam or one of our authorized distributors