

Anti-PNPLA4 antibody ab125879

面格新

医薬用外劇物

製品の概要

製品名	Anti-PNPLA4 antibody
製品の詳細	Rabbit polyclonal to PNPLA4
由来種	Rabbit
アプリケーション	適用あり: WB, IHC-P
種交差性	交差種: Human
免疫原	Recombinant fragment, corresponding to amino acids 1 - 209 of Human PNPLA4 (P41247).
ポジティブ・コントロール	H1299 whole cell lysate Hepatoma tissue
特記事項	<p>The Life Science industry has been in the grips of a reproducibility crisis for a number of years. Abcam is leading the way in addressing this with our range of recombinant monoclonal antibodies and knockout edited cell lines for gold-standard validation. Please check that this product meets your needs before purchasing.</p> <p>If you have any questions, special requirements or concerns, please send us an inquiry and/or contact our Support team ahead of purchase. Recommended alternatives for this product can be found below, along with publications, customer reviews and Q&amp;As</p>

製品の特性

製品の状態	Liquid
保存方法	Shipped at 4°C. Upon delivery aliquot. Store at -20°C or -80°C. Avoid freeze / thaw cycle.
バッファー	pH: 7.00 Preservative: 0.01% Thimerosal (merthiolate) Constituents: 1.21% Tris, 0.75% Glycine, 20% Glycerol (glycerin, glycerine)
精製度	Immunogen affinity purified
ポリ/モノ	ポリクローナル
アイソタイプ	IgG

アプリケーション

The Abpromise guarantee      Abpromise保証は、 次のテスト済みアプリケーションにおけるab125879の使用に適用されます

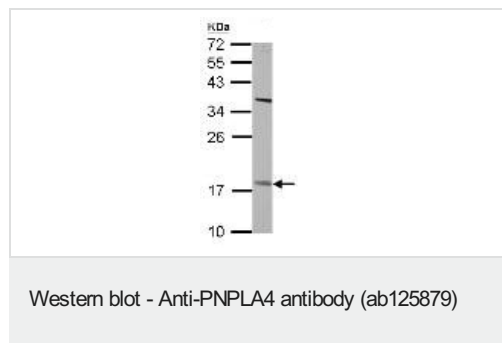
アプリケーションノートには、推奨の開始希釈率がありますが、適切な希釈率につきましてはご確認ください。

アプリケーション	Abreviews	特記事項
WB		1/500 - 1/3000. Predicted molecular weight: 27 kDa.
IHC-P		1/100 - 1/500. Perform heat mediated antigen retrieval with citrate buffer pH 6 before commencing with IHC staining protocol.

## ターゲット情報

機能	Lipid hydrolase.
組織特異性	Expressed in all tissues examined, including heart, brain, placenta, lung, liver, muscle, kidney, pancreas and spleen.
関連疾患	Defects in PNPLA4 may play a role in mitochondrial disorders characterized by complex IV deficiency.
配列類似性	Contains 1 patatin domain.
細胞内局在	Mitochondrion.

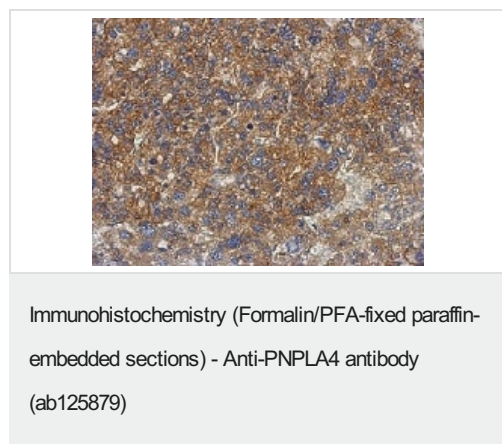
## 画像



Anti-PNPLA4 antibody (ab125879) at 1/500 dilution + H1299 whole cell lysate  
at 30 µg

**Predicted band size:** 27 kDa

12% SDS PAGE



Immunohistochemical analysis of paraffin-embedded Hepatoma, using ab125879 antibody at 1:500 dilution

**Please note:** All products are "FOR RESEARCH USE ONLY. NOT FOR USE IN DIAGNOSTIC PROCEDURES"

### **Our Abpromise to you: Quality guaranteed and expert technical support**

---

- Replacement or refund for products not performing as stated on the datasheet
- Valid for 12 months from date of delivery
- Response to your inquiry within 24 hours
- We provide support in Chinese, English, French, German, Japanese and Spanish
- Extensive multi-media technical resources to help you
- We investigate all quality concerns to ensure our products perform to the highest standards

If the product does not perform as described on this datasheet, we will offer a refund or replacement. For full details of the Abpromise, please visit <https://www.abcam.co.jp/abpromise> or contact our technical team.

### **Terms and conditions**

---

- Guarantee only valid for products bought direct from Abcam or one of our authorized distributors