


Anti-PMP70 antibody ab85550

KO 評価済

16 References **画像数 5**

製品の概要

製品名	Anti-PMP70 antibody
製品の詳細	Rabbit polyclonal to PMP70
由来種	Rabbit
特異性	Replenishment batches of our polyclonal antibody, ab85550 are tested in WB. Previous batches were additionally validated in ICC/IF and IHC-P. These applications are still expected to work and are covered by our Abpromise guarantee. You may also be interested in our alternative recombinant antibody, ab109448 .
アプリケーション	適用あり: IHC-P, ICC/IF, WB
種交差性	交差種: Mouse, Rat, Human 交差が予測される動物種: Chicken, Cow, Orangutan 
免疫原	Synthetic peptide corresponding to Rat PMP70 aa 600 to the C-terminus (C terminal) conjugated to keyhole limpet haemocyanin. (Peptide available as ab94821)
ポジティブ・コントロール	WB: Rat liver and kidney, Human liver and Mouse Lung, tissue lysates, A431, HepG2 and HeLa whole cell lysates. IHC-P: Human cervical carcinoma tissue. ICC/IF: HepG2 cells.
特記事項	<p>The Life Science industry has been in the grips of a reproducibility crisis for a number of years. Abcam is leading the way in addressing this with our range of recombinant monoclonal antibodies and knockout edited cell lines for gold-standard validation. Please check that this product meets your needs before purchasing.</p> <p>If you have any questions, special requirements or concerns, please send us an inquiry and/or contact our Support team ahead of purchase. Recommended alternatives for this product can be found below, along with publications, customer reviews and Q&As</p>

製品の特性

製品の状態	Liquid
保存方法	Shipped at 4°C. Store at +4°C short term (1-2 weeks). Upon delivery aliquot. Store at -20°C or -80°C. Avoid freeze / thaw cycle.
バッファー	pH: 7.40 Preservative: 0.02% Sodium azide

Constituent: PBS

Batches of this product that have a concentration < 1mg/ml may have BSA added as a stabilising agent. If you would like information about the formulation of a specific lot, please contact our scientific support team who will be happy to help.

精製度

Immunogen affinity purified

ポリ/モノ

ポリクローナル

アイソタイプ

IgG

アプリケーション

The Abpromise guarantee **Abpromise保証は、次のテスト済みアプリケーションにおけるab85550の使用に適用されます**

アプリケーションノートには、推奨の開始希釈率がありますが、適切な希釈率につきましてはご確認ください。

アプリケーション	Abreviews	特記事項
IHC-P		Use a concentration of 1 µg/ml.
ICC/IF		Use a concentration of 1 µg/ml.
WB		Use a concentration of 1 µg/ml. Detects a band of approximately 73 kDa (predicted molecular weight: 75 kDa).

ターゲット情報

機能

Probable transporter. The nucleotide-binding fold acts as an ATP-binding subunit with ATPase activity.

配列類似性

Belongs to the ABC transporter superfamily. ABCD family. Peroxisomal fatty acyl CoA transporter (TC 3.A.1.203) subfamily.

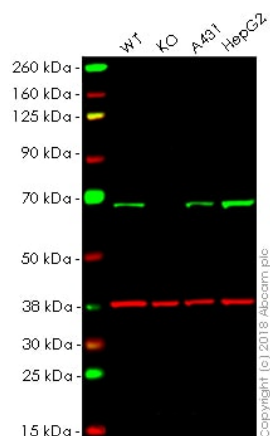
Contains 1 ABC transmembrane type-1 domain.

Contains 1 ABC transporter domain.

細胞内局在

Peroxisome membrane.

画像



Western blot - Anti-PMP70 antibody (ab85550)

All lanes : Anti-PMP70 antibody (ab85550) at 1 µg/ml

Lane 1 : Wild-type HAP1 whole cell lysate

Lane 2 : ABCD3 (PMP70) knockout HAP1 whole cell lysate

Lane 3 : A431 whole cell lysate

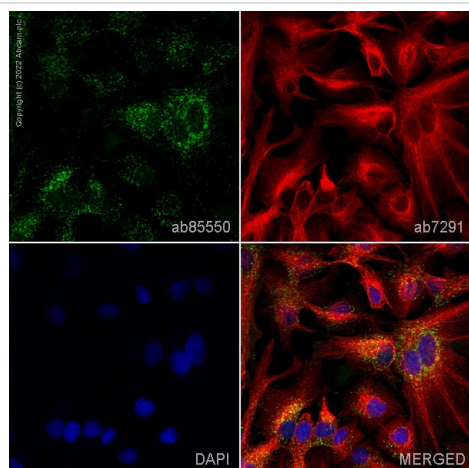
Lane 4 : HepG2 whole cell lysate

Lysates/proteins at 20 µg per lane.

Predicted band size: 75 kDa

Lanes 1 - 4: Merged signal (red and green). Green - ab85550 observed at 75 kDa. Red - loading control, [ab9484](#), observed at 37 kDa.

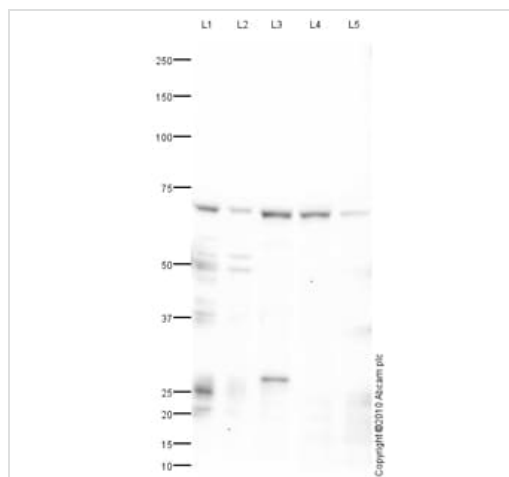
ab85550 was shown to specifically react with PMP70 in wild-type HAP1 cells as signal was lost in ABCD3 (PMP70) knockout cells. Wild-type and ABCD3 (PMP70) knockout samples were subjected to SDS-PAGE. Ab85550 and [ab9484](#) (Mouse anti-GAPDH loading control) were incubated overnight at 4°C at 1 µg/ml and 1/20000 dilution respectively. Blots were developed with Goat anti-Rabbit IgG H&L (IRDye® 800CW) preabsorbed [ab216773](#) and Goat anti-Mouse IgG H&L (IRDye® 680RD) preabsorbed [ab216776](#) secondary antibodies at 1/20000 dilution for 1 hour at room temperature before imaging.



Immunocytochemistry/ Immunofluorescence - Anti-PMP70 antibody (ab85550)

ab85550 staining PMP70 in HepG2 cells. The cells were fixed with 4% paraformaldehyde (10 min), permeabilized with 0.1% PBS-Tween for 5 minutes and then blocked with 1% BSA/10% normal goat serum/0.3M glycine in 0.1%PBS-Tween for 1h. The cells were then incubated overnight at 4°C with ab85550 at 1µg/ml and **ab7291**, Mouse monoclonal [DM1A] to alpha Tubulin - Loading Control. Cells were then incubated with **ab150081**, Goat polyclonal Secondary Antibody to Rabbit IgG - H&L (Alexa Fluor® 488), pre-adsorbed at 1/1000 dilution (shown in green) and **ab150120**, Goat polyclonal Secondary Antibody to Mouse IgG - H&L (Alexa Fluor® 594), pre-adsorbed at 1/1000 dilution (shown in pseudocolour red). Nuclear DNA was labelled with DAPI (shown in blue).

Image was acquired with a confocal microscope (Leica-Microsystems TCS SP8) and a single confocal section is shown.



Western blot - Anti-PMP70 antibody (ab85550)

All lanes : Anti-PMP70 antibody (ab85550) at 1 µg/ml

Lane 1 : Liver (Rat) Tissue Lysate

Lane 2 : Kidney (Rat) Tissue Lysate

Lane 3 : Human liver tissue lysate - total protein (**ab29889**)

Lane 4 : HepG2 (Human hepatocellular liver carcinoma cell line) Whole Cell Lysate

Lane 5 : HeLa (Human epithelial carcinoma cell line) Whole Cell Lysate

Lysates/proteins at 10 µg per lane.

Secondary

All lanes : Goat polyclonal to Rabbit IgG - H&L - Pre-Adsorbed (HRP) at 1/3000 dilution

Developed using the ECL technique.

Performed under reducing conditions.

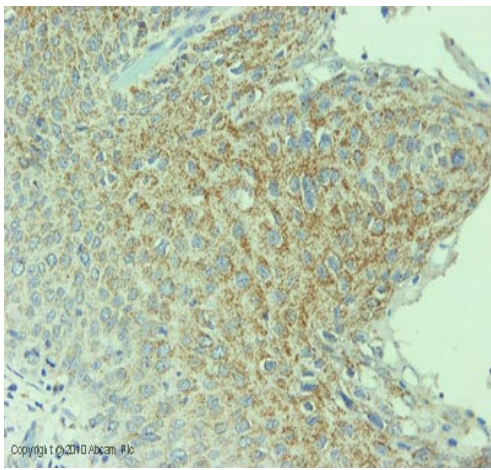
Predicted band size: 75 kDa

Observed band size: 70 kDa

Additional bands at: 25 kDa, 28 kDa, 37 kDa, 50 kDa. We are unsure as to the identity of these extra bands.

Exposure time: 2 minutes

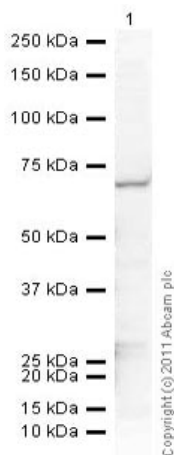
The 73 kDa band observed is comparable to the molecular weight seen with other commercially available antibodies to Rat ATP-binding cassette sub-family D member 3 (PMP70).



Immunohistochemistry (Formalin/PFA-fixed paraffin-embedded sections) - Anti-PMP70 antibody (ab85550)

IHC image of Ab85550 staining in Human Cervical carcinoma formalin fixed paraffin embedded tissue section, performed on a Leica Bond™ system using the standard protocol F. The section was pre-treated using heat mediated antigen retrieval with sodium citrate buffer (pH6, epitope retrieval solution 1) for 20 mins. The section was then incubated with Ab85550, 1 µg/ml, for 15 mins at room temperature and detected using an HRP conjugated compact polymer system. DAB was used as the chromogen. The section was then counterstained with haematoxylin and mounted with DPX.

For other IHC staining systems (automated and non-automated) customers should optimize variable parameters such as antigen retrieval conditions, primary antibody concentration and antibody incubation times.



Western blot - Anti-PMP70 antibody (ab85550)

Anti-PMP70 antibody (ab85550) at 1 µg/ml + Lung (Mouse) Tissue Lysate at 10 µg

Secondary

Goat Anti-Rabbit IgG H&L (HRP) preadsorbed ([ab97080](#)) at 1/5000 dilution

Developed using the ECL technique.

Performed under reducing conditions.

Predicted band size: 75 kDa

Observed band size: 70 kDa

Exposure time: 1 minute

Please note: All products are "FOR RESEARCH USE ONLY. NOT FOR USE IN DIAGNOSTIC PROCEDURES"

Our Abpromise to you: Quality guaranteed and expert technical support

- Replacement or refund for products not performing as stated on the datasheet
- Valid for 12 months from date of delivery
- Response to your inquiry within 24 hours

- We provide support in Chinese, English, French, German, Japanese and Spanish
- Extensive multi-media technical resources to help you
- We investigate all quality concerns to ensure our products perform to the highest standards

If the product does not perform as described on this datasheet, we will offer a refund or replacement. For full details of the Abpromise, please visit <https://www.abcam.co.jp/abpromise> or contact our technical team.

Terms and conditions

- Guarantee only valid for products bought direct from Abcam or one of our authorized distributors