

Anti-PLGF antibody [EPR2802(2)] ab140639

リコンビナント RabMAb[®]

2 References [画像数 3](#)

製品の概要

製品名	Anti-PLGF antibody [EPR2802(2)]
製品の詳細	Rabbit monoclonal [EPR2802(2)] to PLGF
由来種	Rabbit
アプリケーション	適用あり: WB 適用なし: Flow Cyt, ICC/IF, IHC-P or IP
種交差性	交差種: Human
免疫原	Synthetic peptide within Human PLGF aa 50-150. The exact sequence is proprietary.
ポジティブ・コントロール	JAR cell lysate; recombinant Human PLGF protein.
特記事項	<p>This product is a recombinant monoclonal antibody, which offers several advantages including:</p> <ul style="list-style-type: none">- High batch-to-batch consistency and reproducibility- Improved sensitivity and specificity- Long-term security of supply- Animal-free production <p>For more information see here.</p> <p>Our RabMAb[®] technology is a patented hybridoma-based technology for making rabbit monoclonal antibodies. For details on our patents, please refer to RabMAb[®] patents.</p> <p>Mouse, Rat: We have preliminary internal testing data to indicate this antibody may not react with these species. Please contact us for more information.</p>

製品の特性

製品の状態	Liquid
保存方法	Shipped at 4°C. Store at -20°C.
バッファー	pH: 7.2 Preservative: 0.01% Sodium azide Constituents: 9% PBS, 40% Glycerol (glycerin, glycerine), 0.05% BSA, 50% Tissue culture supernatant
精製度	Tissue culture supernatant
ポリ/モノ	モノクローナル

クローン名 EPR2802(2)
アイソタイプ IgG

アプリケーション

The Abpromise guarantee **Abpromise保証は、** 次のテスト済みアプリケーションにおけるab140639の使用に適用されます
アプリケーションノートには、推奨の開始希釈率がありますが、適切な希釈率につきましてはご確認ください。

アプリケーション	Abreviews	特記事項
WB		1/1000 - 1/10000. Predicted molecular weight: 25 kDa.

追加情報 Is unsuitable for Flow Cyt, ICC/IF, IHC-P or IP.

ターゲット情報

機能 Growth factor active in angiogenesis and endothelial cell growth, stimulating their proliferation and migration. It binds to the receptor FLT1/VEGFR-1. Isoform PIGF-2 binds NRP1/neuropilin-1 and NRP2/neuropilin-2 in a heparin-dependent manner.

組織特異性 While the three isoforms are present in most placental tissues, PIGF-2 is specific to early (8 week) placenta and only PIGF-1 is found in the colon and mammary carcinomas.

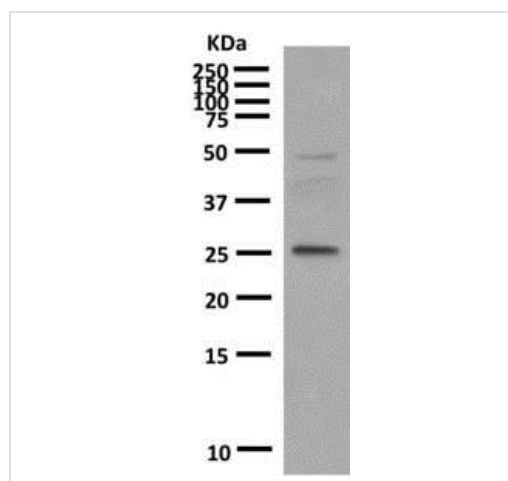
配列類似性 Belongs to the PDGF/VEGF growth factor family.

ドメイン Isoform PIGF-2 contains a basic insert which acts as a cell retention signal.

翻訳後修飾 N-glycosylated.

細胞内局在 Secreted. The three isoforms are secreted but PIGF-2 appears to remain cell attached unless released by heparin.

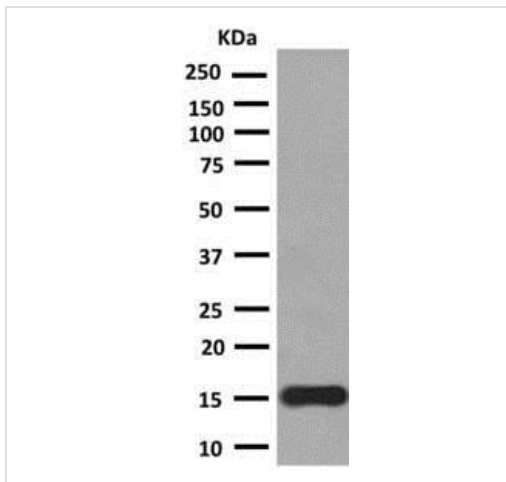
画像



Anti-PLGF antibody [EPR2802(2)] (ab140639) at 1/1000 dilution +
JAR cell lysate at 10 µg

Predicted band size: 25 kDa

Western blot - Anti-PLGF antibody [EPR2802(2)]
(ab140639)





Anti-PLGF antibody [EPR2802(2)] (ab140639) at 1/1000 dilution +
Recombinant Human PLGF at 0.005 µg

Predicted band size: 25 kDa

Western blot - Anti-PLGF antibody [EPR2802(2)]
(ab140639)

Why choose a recombinant antibody?

 <p>Research with confidence Consistent and reproducible results</p>	 <p>Long-term and scalable supply Recombinant technology</p>
 <p>Success from the first experiment Confirmed specificity</p>	 <p>Ethical standards compliant Animal-free production</p>

Anti-PLGF antibody [EPR2802(2)] (ab140639)

Please note: All products are "FOR RESEARCH USE ONLY. NOT FOR USE IN DIAGNOSTIC PROCEDURES"

Our Abpromise to you: Quality guaranteed and expert technical support

- Replacement or refund for products not performing as stated on the datasheet
- Valid for 12 months from date of delivery
- Response to your inquiry within 24 hours
- We provide support in Chinese, English, French, German, Japanese and Spanish
- Extensive multi-media technical resources to help you
- We investigate all quality concerns to ensure our products perform to the highest standards

If the product does not perform as described on this datasheet, we will offer a refund or replacement. For full details of the Abpromise, please visit <https://www.abcam.co.jp/abpromise> or contact our technical team.

Terms and conditions

- Guarantee only valid for products bought direct from Abcam or one of our authorized distributors