

Anti-PLCG 2 antibody [EPR5914-34] ab133522

KO 評価済 リコンビナント RabMAb

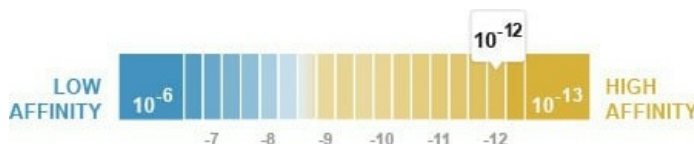
画像数 6

製品の概要

製品名	Anti-PLCG 2 antibody [EPR5914-34]
製品の詳細	Rabbit monoclonal [EPR5914-34] to PLCG 2
由来種	Rabbit
アプリケーション	適用あり: WB, IHC-P, Flow Cyt (Intra) 適用なし: ICC/IF
種交差性	交差種: Human
免疫原	Synthetic peptide. This information is proprietary to Abcam and/or its suppliers.
ポジティブ・コントロール	Raji and Ramos cell lysates; Human gastric adenocarcinoma tissue. Flow Cyt (intra): Human Peripheral Blood Mononuclear Cell (PBMC) cells
特記事項	<p>This product is a recombinant monoclonal antibody, which offers several advantages including:</p> <ul style="list-style-type: none"> - High batch-to-batch consistency and reproducibility - Improved sensitivity and specificity - Long-term security of supply - Animal-free production <p>For more information see here.</p> <p>Our RabMAb[®] technology is a patented hybridoma-based technology for making rabbit monoclonal antibodies. For details on our patents, please refer to RabMAb[®] patents.</p> <p>Mouse, Rat: We have preliminary internal testing data to indicate this antibody may not react with these species. Please contact us for more information.</p>

製品の特性

製品の状態	Liquid
保存方法	Shipped at 4°C. Store at -20°C. Stable for 12 months at -20°C.
解離定数 (K _D 値)	K _D = 3.00 x 10 ⁻¹² M



[Learn more about K_D](#)

バッファー	pH: 7.2 Preservative: 0.05% Sodium azide Constituents: 40% Glycerol (glycerin, glycerine), 9.85% Tris glycine, 50% Tissue culture supernatant
精製度	Protein A purified
ポリ/モノ	モノクローナル
クローン名	EPR5914-34
アイソタイプ	IgG

アプリケーション

The Abpromise guarantee **Abpromise保証は、次のテスト済みアプリケーションにおけるab133522の使用に適用されます**
アプリケーションノートには、推奨の開始希釈率がありますが、適切な希釈率につきましてはご検討ください。

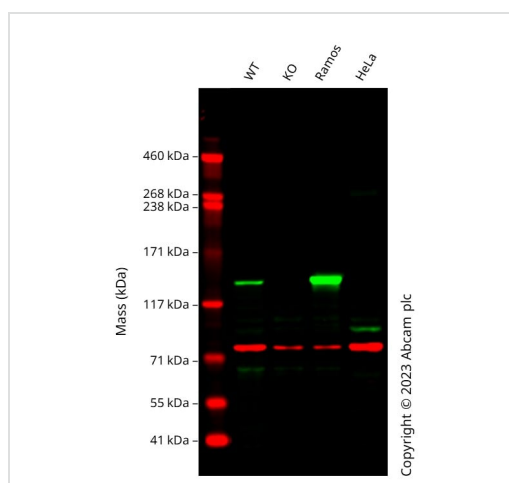
アプリケーション	Abreviews	特記事項
WB		1/10000 - 1/50000. Predicted molecular weight: 148 kDa.
IHC-P		1/100 - 1/250. Perform heat mediated antigen retrieval with citrate buffer pH 6 before commencing with IHC staining protocol.
Flow Cyt (Intra)		1/1000.

追加情報 Is unsuitable for ICC/IF.

ターゲット情報

機能	The production of the second messenger molecules diacylglycerol (DAG) and inositol 1,4,5-trisphosphate (IP3) is mediated by activated phosphatidylinositol-specific phospholipase C enzymes. It is a crucial enzyme in transmembrane signaling.
配列類似性	Contains 1 C2 domain. Contains 1 PH domain. Contains 1 PI-PLC X-box domain. Contains 1 PI-PLC Y-box domain. Contains 2 SH2 domains. Contains 1 SH3 domain.
翻訳後修飾	Phosphorylated on tyrosine residues; upon ligand-induced activation of a variety of growth factor receptors and immune system receptors. Increases phospholipase activity.

画像



Western blot - Anti-PLCG 2 antibody [EPR5914-34] (ab133522)

All lanes : Anti-PLCG 2 antibody [EPR5914-34] (ab133522) at 1/10000 dilution

Lane 1 : Wild-type HAP1 cell lysate

Lane 2 : PLCG2 knockout HAP1 cell lysate

Lane 3 : Ramos cell lysate

Lane 4 : HeLa cell lysate

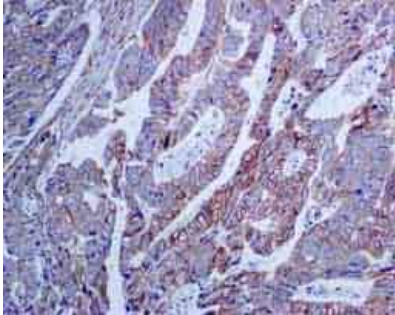
Lysates/proteins at 20 µg per lane.

Performed under reducing conditions.

Predicted band size: 148 kDa

Observed band size: 148 kDa

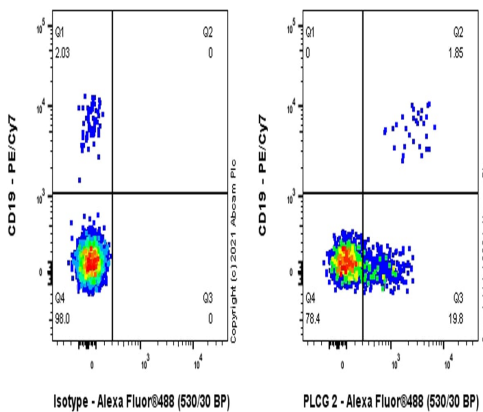
Anti-PLCG2 antibody [EPR5914-34] (ab133522) staining at 1/10000 dilution, shown in green; Mouse anti-CANX [CANX/1543] ([ab238078](#)) loading control staining at 1/20000 dilution, shown in red. In Western blot, ab133522 was shown to bind specifically to PLCG2. A band was observed at 148 kDa in wild-type HAP1 cell lysates with no signal observed at this size in PLCG2 knockout cell line. To generate this image, wild-type and PLCG2 knockout HAP1 cell lysates were analysed. First, samples were run on an SDS-PAGE gel then transferred onto a nitrocellulose membrane. Membranes were blocked in 3 % milk in TBS-0.1 % Tween[®] 20 (TBS-T) before incubation with primary antibodies overnight at 4 °C. Blots were washed four times in TBS-T, incubated with secondary antibodies for 1 h at room temperature, washed again four times then imaged. Secondary antibodies used were Goat anti-Rabbit IgG H&L 800CW and Goat anti-Mouse IgG H&L 680RD at 1/20000 dilution.



Immunohistochemistry (Formalin/PFA-fixed paraffin-embedded sections) - Anti-PLG 2 antibody [EPR5914-34] (ab133522)

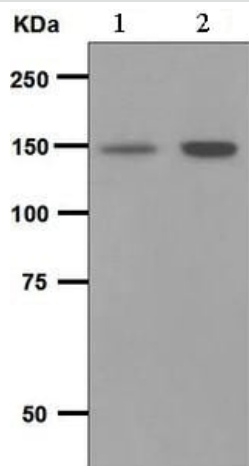
Immunohistochemistry analysis of Paraffin Embedded Human gastric adenocarcinoma tissue labelling PLG2 with ab133522 at 1/100 dilution.

Perform heat mediated antigen retrieval with citrate buffer pH 6 before commencing with IHC staining protocol.



Flow Cytometry (Intracellular) - Anti-PLG 2 antibody [EPR5914-34] (ab133522)

Flow Cytometry analysis of Human Peripheral Blood Mononuclear Cell (PBMC) cells labeling PLG2 with purified ab133522 at 1/1000 dilution (1 μ g/mL) (Red). Cells were fixed with 2% Paraformaldehyde and permeabilised with 0.1% Tween-20. A Goat anti rabbit IgG (Alexa Fluor[®] 488, **ab150081**) secondary antibody was used at 1/2000. Isotype control - Rabbit monoclonal IgG (Left). Cells were surface stained with anti-CD19 conjugated to PE/Cy7, then fixed with 2% PFA followed by intracellularly stained with rabbit IgG or ab133522. Gated on lymphocytes.



Western blot - Anti-PLCG 2 antibody [EPR5914-34]
(ab133522)

All lanes : Anti-PLCG 2 antibody [EPR5914-34] (ab133522) at 1/10000 dilution

Lane 1 : Raji cell lysates

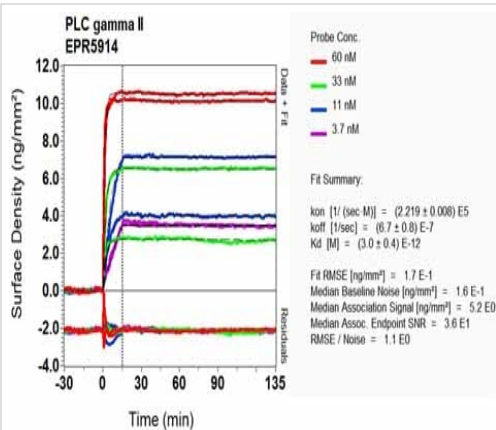
Lane 2 : Ramos cell lysates

Lysates/proteins at 10 µg per lane.

Secondary

All lanes : HRP-labelled Goat anti-Rabbit at 1/2000 dilution

Predicted band size: 148 kDa



O1-RD Scanning - Anti-PLCG 2 antibody [EPR5914-34] (ab133522)

Equilibrium disassociation constant (K_D)

Learn more about K_D

[Click here to learn more about \$K_D\$](#)

Why choose a recombinant antibody?



Research with confidence
Consistent and reproducible results



Long-term and scalable supply
Recombinant technology



Success from the first experiment
Confirmed specificity



Ethical standards compliant
Animal-free production

Anti-PLCG 2 antibody [EPR5914-34] (ab133522)

Please note: All products are "FOR RESEARCH USE ONLY. NOT FOR USE IN DIAGNOSTIC PROCEDURES"

Our Abpromise to you: Quality guaranteed and expert technical support

- Replacement or refund for products not performing as stated on the datasheet
- Valid for 12 months from date of delivery
- Response to your inquiry within 24 hours
- We provide support in Chinese, English, French, German, Japanese and Spanish
- Extensive multi-media technical resources to help you
- We investigate all quality concerns to ensure our products perform to the highest standards

If the product does not perform as described on this datasheet, we will offer a refund or replacement. For full details of the Abpromise, please visit <https://www.abcam.co.jp/abpromise> or contact our technical team.

Terms and conditions

- Guarantee only valid for products bought direct from Abcam or one of our authorized distributors