

Anti-Plasma Kallikrein 1B antibody [13G11] ab1006

★★★★★ [3 Abreviews](#) [11 References](#) [画像数 1](#)

製品の概要

製品名	Anti-Plasma Kallikrein 1B antibody [13G11]
製品の詳細	Mouse monoclonal [13G11] to Plasma Kallikrein 1B
由来種	Mouse
アプリケーション	適用あり: IHC-P
種交差性	交差種: Human
免疫原	Full length native protein (purified) corresponding to Human Plasma Kallikrein 1B. Database link: P03952.1
エピトープ	The specific epitope, found on the prekallikrein / kallikrein heavy chain is involved in the interaction between prekallikrein and factor XIIa.
特記事項	<p>This product was changed from ascites to tissue culture supernatant on 19/12/2018. Please note that the dilutions may need to be adjusted accordingly. If you have any questions please do not hesitate to contact our scientific support team.</p> <p>The Life Science industry has been in the grips of a reproducibility crisis for a number of years. Abcam is leading the way in addressing this with our range of recombinant monoclonal antibodies and knockout edited cell lines for gold-standard validation. Please check that this product meets your needs before purchasing.</p> <p>If you have any questions, special requirements or concerns, please send us an inquiry and/or contact our Support team ahead of purchase. Recommended alternatives for this product can be found below, along with publications, customer reviews and Q&As</p>

製品の特性

製品の状態	Liquid
保存方法	Shipped at 4°C. Upon delivery aliquot and store at -20°C or -80°C. Avoid repeated freeze / thaw cycles.
バッファー	pH: 7.4
精製度	Protein G purified
特記事項(精製)	Purified from TCS
ポリ/モノ	モノクローナル
クローン名	13G11

アプリケーション

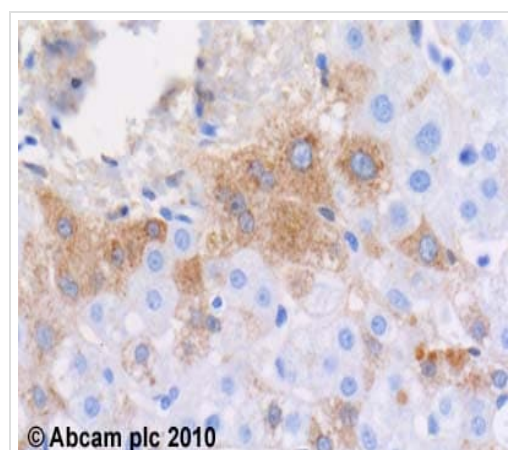
The Abpromise guarantee Abpromise保証は、 次のテスト済みアプリケーションにおけるab1006の使用に適用されます
アプリケーションノートには、推奨の開始希釈率がありますが、適切な希釈率につきましてはご検討ください。

アプリケーション	Abreviews	特記事項
IHC-P		Use a concentration of 4 µg/ml. Perform heat mediated antigen retrieval before commencing with IHC staining protocol.

ターゲット情報

機能	The enzyme cleaves Lys-Arg and Arg-Ser bonds. It activates, in a reciprocal reaction, factor XII after its binding to a negatively charged surface. It also releases bradykinin from HMW kininogen and may also play a role in the renin-angiotensin system by converting prorenin into renin.
関連疾患	Defects in KLKB1 are the cause of prekallikrein deficiency (PKK deficiency) [MIM:612423]; also known as Fletcher factor deficiency. This disorder is a blood coagulation defect.
配列類似性	Belongs to the peptidase S1 family. Plasma kallikrein subfamily. Contains 4 apple domains. Contains 1 peptidase S1 domain.
細胞内局在	Secreted.

画像



Immunohistochemistry (Formalin/PFA-fixed paraffin-embedded sections) - Anti-Plasma Kallikrein 1B antibody [13G11] (ab1006)

ab1006 (4µg/ml) staining plasma kallikrein in human liver, using an automated system (DAKO Autostainer Plus). Using this protocol there is weak cytoplasmic staining of a subpopulation of hepatocytes.

Sections were rehydrated and antigen retrieved with the Dako 3 in 1 AR buffer citrate pH6.1 in a DAKO PT link. Slides were peroxidase blocked in 3% H2O2 in methanol for 10 mins. They were then blocked with Dako Protein block for 10 minutes (containing casein 0.25% in PBS) then incubated with primary antibody for 20 min and detected with Dako envision flex amplification kit for 30 minutes. Colorimetric detection was completed with Diaminobenzidine for 5 minutes. Slides were counterstained with Haematoxylin and coverslipped under DePeX. Please note that, for manual staining, optimization of primary antibody concentration and incubation time is recommended. Signal amplification may be required.

This image was generated using the ascites version of the product.

Please note: All products are "FOR RESEARCH USE ONLY. NOT FOR USE IN DIAGNOSTIC PROCEDURES"

Our Abpromise to you: Quality guaranteed and expert technical support

- Replacement or refund for products not performing as stated on the datasheet
- Valid for 12 months from date of delivery
- Response to your inquiry within 24 hours

- We provide support in Chinese, English, French, German, Japanese and Spanish
- Extensive multi-media technical resources to help you
- We investigate all quality concerns to ensure our products perform to the highest standards

If the product does not perform as described on this datasheet, we will offer a refund or replacement. For full details of the Abpromise, please visit <https://www.abcam.co.jp/abpromise> or contact our technical team.

Terms and conditions

- Guarantee only valid for products bought direct from Abcam or one of our authorized distributors