

Anti-PLA2R antibody [EPR20483] ab211573

リコンビナント **RabMAb**

2 References [画像数 4](#)

製品の概要

製品名	Anti-PLA2R antibody [EPR20483]
製品の詳細	Rabbit monoclonal [EPR20483] to PLA2R
由来種	Rabbit
アプリケーション	適用あり: WB, IHC-P
種交差性	交差種: Human
免疫原	Recombinant fragment. This information is proprietary to Abcam and/or its suppliers.
ポジティブ・コントロール	WB: Human fetal kidney lysate. IHC-P: Human kidney tissue (from a patient with renal clear cell carcinoma).
特記事項	<p>This product is a recombinant monoclonal antibody, which offers several advantages including:</p> <ul style="list-style-type: none"> - High batch-to-batch consistency and reproducibility - Improved sensitivity and specificity - Long-term security of supply - Animal-free production <p>For more information see here.</p> <p>Our RabMAb[®] technology is a patented hybridoma-based technology for making rabbit monoclonal antibodies. For details on our patents, please refer to RabMAb[®] patents.</p>

製品の特性

製品の状態	Liquid
保存方法	Shipped at 4°C. Store at +4°C short term (1-2 weeks). Upon delivery aliquot. Store at -20°C long term. Avoid freeze / thaw cycle.
バッファー	<p>pH: 7.2</p> <p>Preservative: 0.01% Sodium azide</p> <p>Constituents: 59% PBS, 40% Glycerol, 0.05% BSA</p>
精製度	Protein A purified
ポリ/モノ	モノクローナル
クローン名	EPR20483
アイソタイプ	IgG

アプリケーション

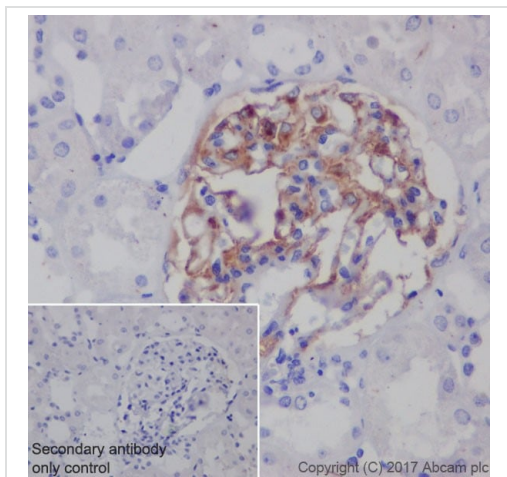
The Abpromise guarantee **Abpromise保証は、** 次のテスト済みアプリケーションにおけるab211573の使用に適用されます
アプリケーションノートには、推奨の開始希釈率がありますが、適切な希釈率につきましてはご確認ください。

アプリケーション	Abreviews	特記事項
WB		1/1000. Detects a band of approximately 180 kDa (predicted molecular weight: 169 kDa).
IHC-P		1/2000. Perform heat mediated antigen retrieval with Tris/EDTA buffer pH 9.0 before commencing with IHC staining protocol.

ターゲット情報

機能	Receptor for secretory phospholipase A2 (sPLA2). Acts as a receptor for phospholipase sPLA2-IB/PLA2G1B but not sPLA2-IIA/PLA2G2A. Also able to bind to snake PA2-like toxins. Although its precise function remains unclear, binding of sPLA2 to its receptor participates in both positive and negative regulation of sPLA2 functions as well as clearance of sPLA2. Binding of sPLA2-IB/PLA2G1B induces various effects depending on the cell type, such as activation of the mitogen-activated protein kinase (MAPK) cascade to induce cell proliferation, the production of lipid mediators, selective release of arachidonic acid in bone marrow-derived mast cells. In neutrophils, binding of sPLA2-IB/PLA2G1B can activate p38 MAPK to stimulate elastase release and cell adhesion. May be involved in responses in proinflammatory cytokine productions during endotoxic shock. Also has endocytic properties and rapidly internalizes sPLA2 ligands, which is particularly important for the clearance of extracellular sPLA2s to protect their potent enzymatic activities. The soluble secretory phospholipase A2 receptor form is circulating and acts as a negative regulator of sPLA2 functions by blocking the biological functions of sPLA2-IB/PLA2G1B.
組織特異性	Present in lung macrophage (at protein level). Highly expressed in kidney. Also expressed in pancreas, amnion, choriodecidua and placenta. Isoform 2 is expressed at much lower level.
配列類似性	Contains 8 C-type lectin domains. Contains 1 fibronectin type-II domain. Contains 1 ricin B-type lectin domain.
ドメイン	C-type lectin domains 3-5 mediate the interaction with phospholipase PLA2G1B. The endocytosis signal probably mediates endocytosis via clathrin-coated pits.
翻訳後修飾	The secretory phospholipase A2 receptor form may be produced by the action of metalloproteinases. It contains all extracellular domains and only lacks transmembrane and cytosolic regions. It is however unclear whether this form is produced by proteolytic cleavage as suggested by some experiments, or by alternative splicing, as in the case of isoform 2 that shares all characteristics of secretory phospholipase A2 receptor form.
細胞内局在	Secreted and Cell membrane.

画像



Immunohistochemistry (Formalin/PFA-fixed paraffin-embedded sections) - Anti-PLA2R antibody [EPR20483] (ab211573)

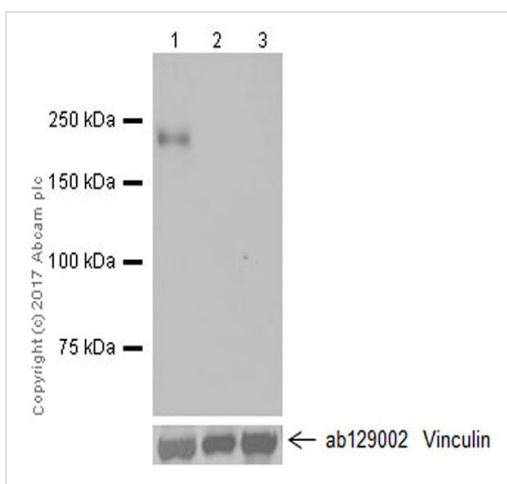
Immunohistochemical analysis of paraffin-embedded human kidney tissue (from a patient with renal clear cell carcinoma) labeling PLA2R with ab211573 at 1/2000 dilution, followed by Goat Anti-Rabbit IgG H&L (HRP) Ready to use.

Positive staining on glomerular basement membrane of human kidney (PMID: 26222864).

Counter stained with Hematoxylin.

Secondary antibody only control: Used PBS instead of primary antibody, secondary antibody is Goat Anti-Rabbit IgG H&L (HRP) Ready to use.

Perform heat mediated antigen retrieval with Tris/EDTA buffer pH 9.0 before commencing with IHC staining protocol.



Western blot - Anti-PLA2R antibody [EPR20483] (ab211573)

All lanes : Anti-PLA2R antibody [EPR20483] (ab211573) at 1/1000 dilution

Lane 1 : Human fetal kidney lysate

Lane 2 : Human fetal liver lysate

Lane 3 : Human fetal heart lysate

Lysates/proteins at 50 µg per lane.

Secondary

All lanes : Goat Anti-Rabbit IgG H&L (HRP) ([ab97051](#)) at 1/100000 dilution

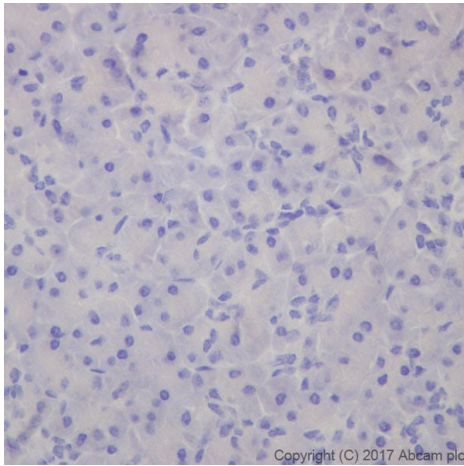
Predicted band size: 169 kDa

Observed band size: 180 kDa

Exposure time: 3 minutes

Blocking/Dilution buffer: 5% NFDm/TBST.

PLA2R is specifically expressed in kidney (PMID: 7721806).



Immunohistochemical analysis of paraffin-embedded human pancreas tissue labeling PLA2R with ab211573 at 1/2000 dilution, followed by Goat Anti-Rabbit IgG H&L (HRP) Ready to use.

Negative control: No staining on human pancreas (PMID: 7721806).

Counter stained with Hematoxylin.

Perform heat mediated antigen retrieval with Tris/EDTA buffer pH 9.0 before commencing with IHC staining protocol.

Immunohistochemistry (Formalin/PFA-fixed paraffin-embedded sections) - Anti-PLA2R antibody [EPR20483] (ab211573)

Why choose a recombinant antibody?



Anti-PLA2R antibody [EPR20483] (ab211573)

Please note: All products are "FOR RESEARCH USE ONLY. NOT FOR USE IN DIAGNOSTIC PROCEDURES"

Our Abpromise to you: Quality guaranteed and expert technical support

- Replacement or refund for products not performing as stated on the datasheet
- Valid for 12 months from date of delivery
- Response to your inquiry within 24 hours
- We provide support in Chinese, English, French, German, Japanese and Spanish
- Extensive multi-media technical resources to help you
- We investigate all quality concerns to ensure our products perform to the highest standards

If the product does not perform as described on this datasheet, we will offer a refund or replacement. For full details of the Abpromise,

please visit <https://www.abcam.co.jp/abpromise> or contact our technical team.

Terms and conditions

- Guarantee only valid for products bought direct from Abcam or one of our authorized distributors