

Anti-PKC beta 2 antibody [Y125] - BSA and Azide free ab239798

リコンビナント **RabMAb**

画像数 8

製品の概要

製品名	Anti-PKC beta 2 antibody [Y125] - BSA and Azide free
製品の詳細	Rabbit monoclonal [Y125] to PKC beta 2 - BSA and Azide free
由来種	Rabbit
特異性	This antibody recognises PKC beta 2, it does not cross react with human PKC beta 1. Immunogen's homology with PKC alpha is 77.8%. Cross-reactivity with PKC alpha has not been tested.
アプリケーション	適用あり: Flow Cyt (Intra), ICC/IF, IHC-P, WB
種交差性	交差種: Mouse, Rat, Human, Recombinant fragment 交差が予測される動物種: Cow, Pig 
免疫原	Synthetic peptide. This information is proprietary to Abcam and/or its suppliers.
エピトープ	ab239798 reacts with an epitope located in the region near the C terminus of PKC beta 2.
ポジティブ・コントロール	WB: K-562 (Human chronic myelogenous leukemia lymphoblast) whole cell lysate unboiled, Mouse brain lysate unboiled, Rat brain lysate unboiled, Active GST-tagged human PKC beta 2 full length protein. IHC-P: human gastric carcinoma, mouse cerebrum, rat cerebrum. ICC/IF: HeLa (Human cervix adenocarcinoma epithelial cell) Flow cyto(intra): K-562 (Human chronic myelogenous leukemia lymphoblast) cells.
特記事項	<p>ab239798 is the carrier-free version of ab32026.</p> <p>Our carrier-free antibodies are typically supplied in a PBS-only formulation, purified and free of BSA, sodium azide and glycerol. The carrier-free buffer and high concentration allow for increased conjugation efficiency.</p> <p>This conjugation-ready format is designed for use with fluorochromes, metal isotopes, oligonucleotides, and enzymes, which makes them ideal for antibody labelling, functional and cell-based assays, flow-based assays (e.g. mass cytometry) and Multiplex Imaging applications.</p> <p>Use our conjugation kits for antibody conjugates that are ready-to-use in as little as 20 minutes with <1 minute hands-on-time and 100% antibody recovery: available for fluorescent dyes, HRP, biotin and gold.</p> <p>This product is compatible with the Maxpar[®] Antibody Labeling Kit from Fluidigm, without the need for antibody preparation. Maxpar[®] is a trademark of Fluidigm Canada Inc.</p> <p>This product is a recombinant monoclonal antibody, which offers several advantages including:</p>

- High batch-to-batch consistency and reproducibility
- Improved sensitivity and specificity
- Long-term security of supply
- Animal-free production

For more information [see here](#).

Our RabMAb[®] technology is a patented hybridoma-based technology for making rabbit monoclonal antibodies. For details on our patents, please refer to [RabMAb[®] patents](#).

製品の特性

製品の状態	Liquid
保存方法	Shipped at 4°C. Store at +4°C. Do Not Freeze.
バッファー	pH: 7.2 Constituent: PBS
キャリア・フリー	はい
精製度	Protein A purified
ポリ/モノ	モノクローナル
クローン名	Y125
アイソタイプ	IgG

アプリケーション

The Abpromise guarantee [Abpromise保証は](#)、次のテスト済みアプリケーションにおけるab239798の使用に適用されます
アプリケーションノートには、推奨の開始希釈率がありますが、適切な希釈率につきましてはご確認ください。

アプリケーション	Abreviews	特記事項
Flow Cyt (Intra)		Use at an assay dependent concentration. ab199376 - Rabbit monoclonal IgG, is suitable for use as an isotype control with this antibody.
ICC/IF		Use at an assay dependent concentration.
IHC-P		Use at an assay dependent concentration. Perform heat mediated antigen retrieval with citrate buffer pH 6 before commencing with IHC staining protocol.
WB		Use at an assay dependent concentration. Detects a band of approximately 77 kDa (predicted molecular weight: 77 kDa).

ターゲット情報

機能	Calcium-activated and phospholipid-dependent serine/threonine-protein kinase involved in various processes such as regulation of the B-cell receptor (BCR) signalosome, apoptosis and transcription regulation. Plays a key role in B-cell activation and function by regulating BCR-induced NF-kappa-B activation and B-cell survival. Required for recruitment and activation of the
----	--

IKK kinase to lipid rafts and mediates phosphorylation of CARD11/CARMA1 at 'Ser-559', 'Ser-644' and 'Ser-652', leading to activate the NF-kappa-B signaling. Involved in apoptosis following oxidative damage: in case of oxidative conditions, specifically phosphorylates 'Ser-36' of isoform p66Shc of SHC1, leading to mitochondrial accumulation of p66Shc, where p66Shc acts as a reactive oxygen species producer. Acts as a coactivator of androgen receptor (ANDR)-dependent transcription, by being recruited to ANDR target genes and specifically mediating phosphorylation of 'Thr-6' of histone H3 (H3T6ph), a specific tag for epigenetic transcriptional activation that prevents demethylation of histone H3 'Lys-4' (H3K4me) by LSD1/KDM1A. Also involved in triglyceride homeostasis. Serves as the receptor for phorbol esters, a class of tumor promoters.

配列類似性

Belongs to the protein kinase superfamily. AGC Ser/Thr protein kinase family. PKC subfamily. Contains 1 AGC-kinase C-terminal domain. Contains 1 C2 domain. Contains 2 phorbol-ester/DAG-type zinc fingers. Contains 1 protein kinase domain.

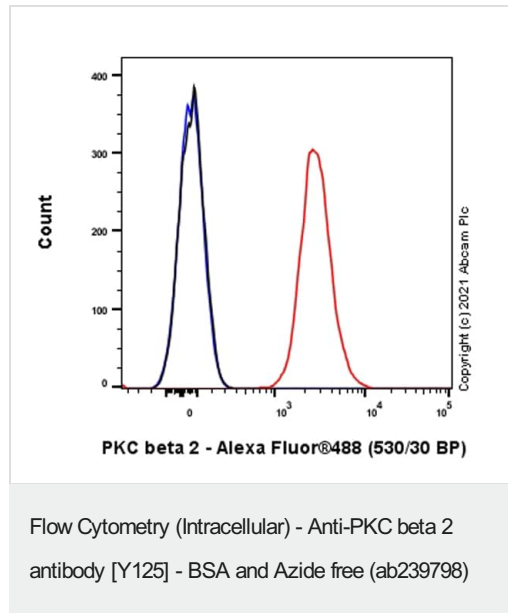
翻訳後修飾

Phosphorylation on Thr-500 within the activation loop renders it competent to autophosphorylate. Subsequent autophosphorylation of Thr-642 maintains catalytic competence, and autophosphorylation on Ser-661 appears to release the kinase into the cytosol. Autophosphorylation on other sites i.e. in the N-terminal and hinge regions have no effect on enzyme activity.

細胞内局在

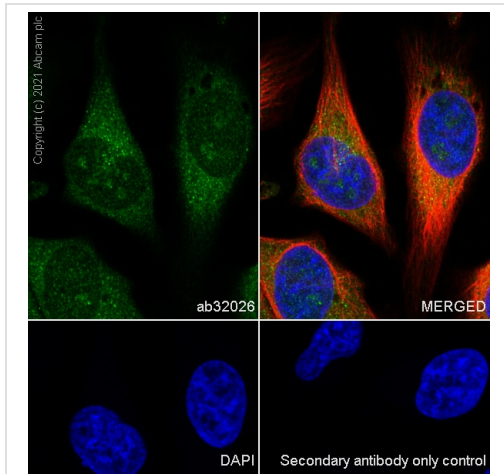
Cytoplasm. Nucleus. Membrane.

画像



This data was developed using the same antibody clone in a different buffer formulation containing PBS, BSA, glycerol, and sodium azide ([ab32026](#)).

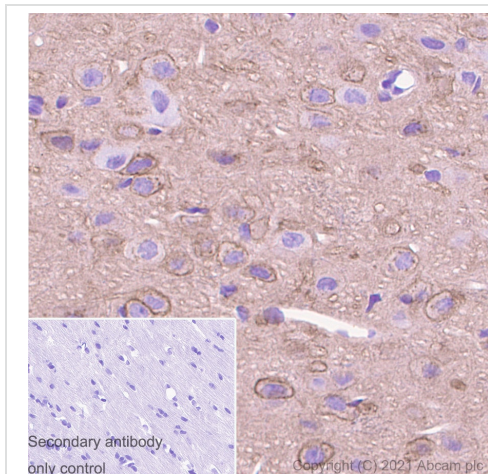
Intracellular Flow Cytometry analysis of K-562 (Human chronic myelogenous leukemia lymphoblast) cells labeling PKC beta 2 with purified [ab32026](#) at 1/20 dilution (5 ug/ml) (Red). Cells were fixed with 4% Paraformaldehyde and permeabilised with 90% Methanol. A Goat anti rabbit IgG (Alexa Fluor® 488, [ab150081](#)) (1/2000 dilution) was used as the secondary antibody. Rabbit monoclonal IgG (Black) was used as a isotype control. Cell without incubation with primary antibody and secondary antibody (Blue) were used as unlabeled control.



Immunocytochemistry/ Immunofluorescence - Anti-PKC beta 2 antibody [Y125] - BSA and Azide free (ab239798)

This data was developed using the same antibody clone in a different buffer formulation containing PBS, BSA, glycerol, and sodium azide (**ab32026**).

Immunocytochemistry/ Immunofluorescence analysis of HeLa (Human cervix adenocarcinoma epithelial cell) cells labeling PKC beta 2 using **ab32026**. The cells were fixed with 4% paraformaldehyde then permeabilized with 0.1% Triton X-100. The cells were then incubated with **ab32026** at 1:50 dilution followed by a further incubation with a Goat anti rabbit IgG (Alexa Fluor® 488, **ab150077**) at 2 µg/ml (shown in green). Nuclear DNA was labelled in blue with DAPI. Cells were counterstained using **ab195889** Anti-alpha Tubulin antibody [DM1A] - Microtubule Marker (Alexa Fluor® 594) at 1:200 dilution (shown in red). Secondary antibody only control: PBS instead of the primary antibody.



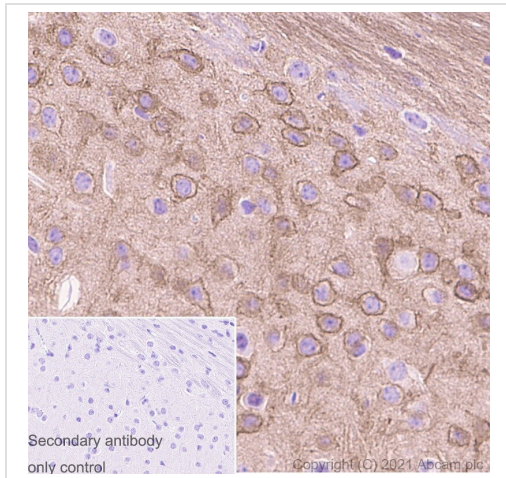
Immunohistochemistry (Formalin/PFA-fixed paraffin-embedded sections) - Anti-PKC beta 2 antibody [Y125] - BSA and Azide free (ab239798)

This data was developed using the same antibody clone in a different buffer formulation containing PBS, BSA, glycerol, and sodium azide (**ab32026**).

Immunohistochemical analysis of Paraffin-embedded sections rat cerebrum tissue labelling PKC beta 2 with **ab32026** at 1/1000 dilution, followed by a ready to use secondary Rabbit specific IHC polymer detection kit HRP/DAB (**ab209101**). Staining on rat cerebrum tissue is observed. Counter stained with Haematoxylin. Secondary antibody only control: Used PBS instead of primary antibody, secondary antibody is ready to use Rabbit specific IHC polymer detection kit HRP/DAB (**ab209101**).

Heat mediated antigen retrieval using Bond™ Epitope Retrieval Solution 2 (pH 9.0).

The immunostaining was performed on a Leica Biosystems BOND® RX instrument.



Immunohistochemistry (Formalin/PFA-fixed paraffin-embedded sections) - Anti-PKC beta 2 antibody [Y125] - BSA and Azide free (ab239798)

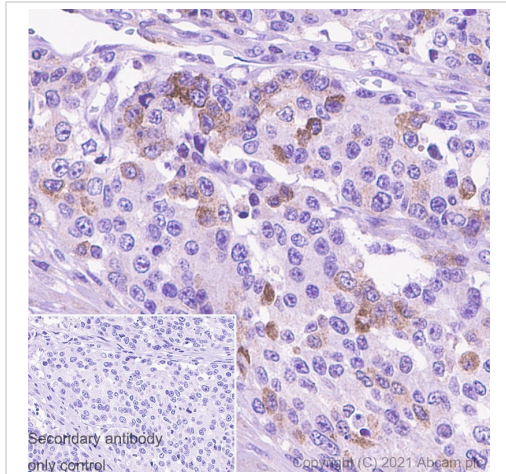
This data was developed using the same antibody clone in a different buffer formulation containing PBS, BSA, glycerol, and sodium azide ([ab32026](#)).

Immunohistochemical analysis of Paraffin-embedded sections mouse cerebrum tissue labelling PKC beta 2 with [ab32026](#) at 1/1000 dilution, followed by a ready to use secondary Rabbit specific IHC polymer detection kit HRP/DAB ([ab209101](#)). Staining on mouse cerebrum tissue is observed. Counter stained with Haematoxylin.

Secondary antibody only control: Used PBS instead of primary antibody, secondary antibody is ready to use Rabbit specific IHC polymer detection kit HRP/DAB ([ab209101](#)).

Heat mediated antigen retrieval using Bond™ Epitope Retrieval Solution 2 (pH 9.0).

The immunostaining was performed on a Leica Biosystems BOND® RX instrument.



Immunohistochemistry (Formalin/PFA-fixed paraffin-embedded sections) - Anti-PKC beta 2 antibody [Y125] - BSA and Azide free (ab239798)

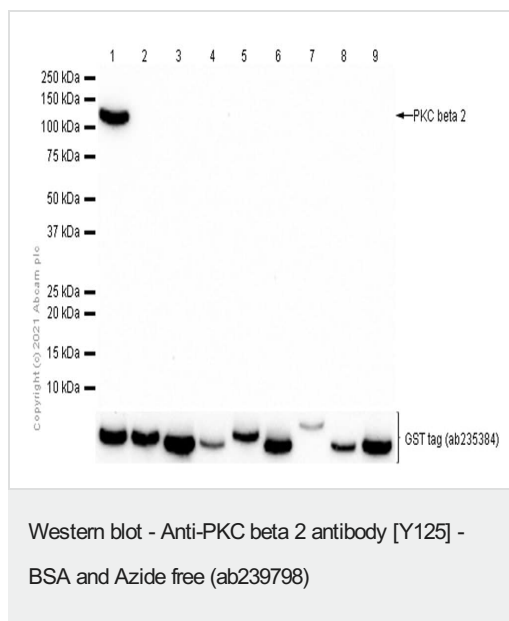
This data was developed using the same antibody clone in a different buffer formulation containing PBS, BSA, glycerol, and sodium azide ([ab32026](#)).

Immunohistochemical analysis of Paraffin-embedded sections human gastric carcinoma tissue labelling PKC beta 2 with [ab32026](#) at 1/300 dilution, followed by a ready to use secondary Rabbit specific IHC polymer detection kit HRP/DAB ([ab209101](#)). Staining on human gastric carcinoma tissue is observed. Counter stained with Haematoxylin.

Secondary antibody only control: Used PBS instead of primary antibody, secondary antibody is ready to use Rabbit specific IHC polymer detection kit HRP/DAB ([ab209101](#)).

Heat mediated antigen retrieval using Bond™ Epitope Retrieval Solution 2 (pH 9.0).

The immunostaining was performed on a Leica Biosystems BOND® RX instrument.



All lanes : Anti-PKC beta 2 antibody [Y125] ([ab32026](#)) at 1/1000 dilution

Lane 1 : Recombinant human PKC beta 2 protein ([ab60841](#))

Lane 2 : Recombinant human PKC beta 1 protein ([ab60840](#))

Lane 3 : Recombinant human PKC delta protein ([ab60844](#))

Lane 4 : Recombinant human PKC eta protein ([ab60849](#))

Lane 5 : Recombinant human PKC epsilon protein ([ab60847](#))

Lane 6 : Recombinant human PKC theta/PRKCQ protein ([ab56641](#))

Lane 7 : Recombinant human PKC mu/PKD protein ([ab60873](#))

Lane 8 : Recombinant human PKC alpha protein (Active) ([ab55672](#))

Lane 9 : Recombinant human PKC gamma protein ([ab60842](#))

Secondary

All lanes : Goat Anti-Rabbit IgG H&L (HRP) ([ab97051](#)) at 1/20000 dilution

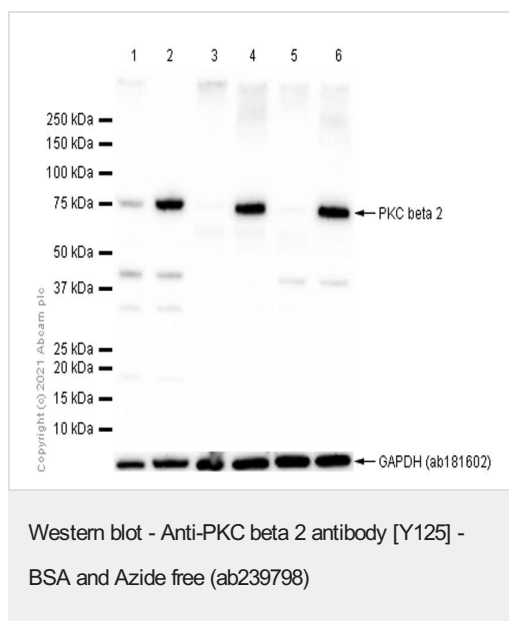
Predicted band size: 77 kDa

Observed band size: 100 kDa

This data was developed using the same antibody clone in a different buffer formulation containing PBS, BSA, glycerol, and sodium azide ([ab32026](#)).

Blocking and diluting buffer and concentration: 5% NFDM/TBST.

[ab235384](#) was used to detect GST tag.



All lanes : Anti-PKC beta 2 antibody [Y125] ([ab32026](#)) at 1/1000 dilution

Lane 1 : K-562 (Human chronic myelogenous leukemia lymphoblast) whole cell lysate boiled

Lane 2 : K-562 (Human chronic myelogenous leukemia lymphoblast) whole cell lysate unboiled

Lane 3 : Mouse brain lysate boiled

Lane 4 : Mouse brain lysate unboiled

Lane 5 : Rat brain lysate boiled

Lane 6 : Rat brain lysate unboiled

Lysates/proteins at 20 µg per lane.

Secondary

All lanes : Goat Anti-Rabbit IgG H&L (HRP) ([ab97051](#)) at 1/20000 dilution

Predicted band size: 77 kDa

Observed band size: 77 kDa

This data was developed using the same antibody clone in a different buffer formulation containing PBS, BSA, glycerol, and sodium azide ([ab32026](#)).

Blocking and diluting buffer and concentration: 5% NFDm/TBST.

[ab181602](#) was used as GAPDH loading control.

We recommend not to boil samples when loading lysate.

Why choose a recombinant antibody?



Research with confidence
Consistent and reproducible results



Long-term and scalable supply
Recombinant technology



Success from the first experiment
Confirmed specificity



Ethical standards compliant
Animal-free production

Anti-PKC beta 2 antibody [Y125] - BSA and Azide free (ab239798)

Please note: All products are "FOR RESEARCH USE ONLY. NOT FOR USE IN DIAGNOSTIC PROCEDURES"

Our Abpromise to you: Quality guaranteed and expert technical support

- Replacement or refund for products not performing as stated on the datasheet
- Valid for 12 months from date of delivery
- Response to your inquiry within 24 hours
- We provide support in Chinese, English, French, German, Japanese and Spanish
- Extensive multi-media technical resources to help you
- We investigate all quality concerns to ensure our products perform to the highest standards

If the product does not perform as described on this datasheet, we will offer a refund or replacement. For full details of the Abpromise, please visit <https://www.abcam.co.jp/abpromise> or contact our technical team.

Terms and conditions

- Guarantee only valid for products bought direct from Abcam or one of our authorized distributors