

### Anti-PKC alpha (phospho S657 + Y658) antibody ab23513

★★★★★ **6 Abreviews**   **20 References**   画像数 3

#### 製品の概要

製品名	Anti-PKC alpha (phospho S657 + Y658) antibody
製品の詳細	Rabbit polyclonal to PKC alpha (phospho S657 + Y658)
由来種	Rabbit
特異性	ab23513 detected PKC alpha and PKC beta I, but not other PKC isoforms in rat brain lysate.
アプリケーション	<b>適用あり:</b> ICC, WB
種交差性	<b>交差種:</b> Rat
免疫原	Synthetic peptide corresponding to Human PKC alpha (phospho S657 + Y658).
特記事項	<p>We do not have concentration information for this antibody. It is optimized to work at the dilutions stated on the datasheet.</p> <p>The Life Science industry has been in the grips of a reproducibility crisis for a number of years. Abcam is leading the way in addressing this with our range of recombinant monoclonal antibodies and knockout edited cell lines for gold-standard validation. Please check that this product meets your needs before purchasing.</p> <p>If you have any questions, special requirements or concerns, please send us an inquiry and/or contact our Support team ahead of purchase. Recommended alternatives for this product can be found below, along with publications, customer reviews and Q&amp;As</p>

#### 製品の特性

製品の状態	Liquid
保存方法	Shipped at 4°C. Store at +4°C short term (1-2 weeks). Upon delivery aliquot. Store at -20°C. Avoid freeze / thaw cycle.
バッファー	Preservative: 0.05% Sodium azide Constituents: PBS, 50% Glycerol, 0.1% BSA
精製度	Affinity purified
ポリ/モノ	ポリクローナル
アイソタイプ	IgG

#### アプリケーション

## The Abpromise guarantee

**Abpromise保証は、次のテスト済みアプリケーションにおけるab23513の使用に適用されます**

アプリケーションノートには、推奨の開始希釈率がありますが、適切な希釈率につきましてはご検討ください。

アプリケーション	Abreviews	特記事項
ICC		Use at an assay dependent concentration.
WB	★★★★★ (4)	1/1000. Detects a band of approximately 82 kDa.

## ターゲット情報

### 機能

This is a calcium-activated, phospholipid-dependent, serine- and threonine-specific enzyme. May play a role in cell motility by phosphorylating CSPG4.

PKC is activated by diacylglycerol which in turn phosphorylates a range of cellular proteins. PKC also serves as the receptor for phorbol esters, a class of tumor promoters.

### 配列類似性

Belongs to the protein kinase superfamily. AGC Ser/Thr protein kinase family. PKC subfamily.

Contains 1 AGC-kinase C-terminal domain.

Contains 1 C2 domain.

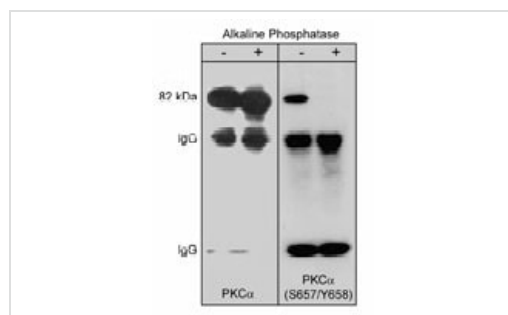
Contains 2 phorbol-ester/DAG-type zinc fingers.

Contains 1 protein kinase domain.

### 細胞内局在

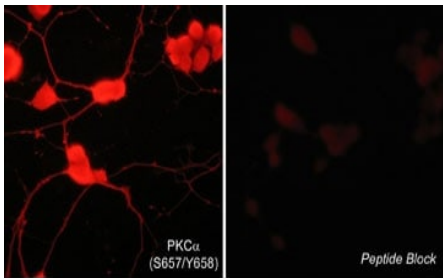
Cytoplasm. Cell membrane. Nucleus.

## 画像



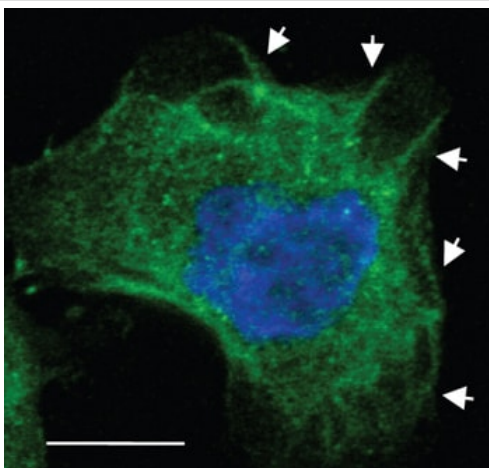
Western blot - Anti-PKC alpha (phospho S657 + Y658) antibody (ab23513)

Western blot analysis of immunoprecipitates from neonatal rat brain lysate using anti-PKCα antibody. Control and alkaline phosphatase treated precipitates were probed with anti-PKCα (Central region) or anti-phospho-PKCα (Ser-657/Tyr-658).



Immunocytochemical labeling of PKC phosphorylation in aldehyde-fixed and NP-40-permeabilized NGF-differentiated PC12 cells. The cells were labeled with rabbit polyclonal anti-PKC $\alpha$  (Ser-657/Tyr-658) (PP1091) antibody in the absence (Left) or presence (Right) of blocking peptide (PX1095). The antibody was detected using appropriate secondary antibody conjugated to Dylight® 594

Immunocytochemistry - Anti-PKC alpha (phospho S657 + Y658) antibody (ab23513)



Immunofluorescence analysis of S2-O13 cells, staining PKC alpha (phospho S657 + Y658) with ab23513.

Cells were fixed with paraformaldehyde, permeabilized with 0.1% Triton X-100, and blocked with blocking solution (3% BSA/PBS). Cells were incubated with primary antibody for 1 hour. An AlexaFluor®488-conjugated anti-rabbit IgG was used as the secondary antibody.

Immunocytochemistry - Anti-PKC alpha (phospho S657 + Y658) antibody (ab23513)

Image from Taniuchi K et al., PLoS One. 2012;7(4):e35674. Epub 2012 Apr 19. Fig 8.; doi:10.1371/journal.pone.0035674; April 19, 2012, PLoS ONE 7(4): e35674.

**Please note:** All products are "FOR RESEARCH USE ONLY. NOT FOR USE IN DIAGNOSTIC PROCEDURES"

### **Our Abpromise to you: Quality guaranteed and expert technical support**

---

- Replacement or refund for products not performing as stated on the datasheet
- Valid for 12 months from date of delivery
- Response to your inquiry within 24 hours
  
- We provide support in Chinese, English, French, German, Japanese and Spanish
- Extensive multi-media technical resources to help you
- We investigate all quality concerns to ensure our products perform to the highest standards

If the product does not perform as described on this datasheet, we will offer a refund or replacement. For full details of the Abpromise, please visit <https://www.abcam.co.jp/abpromise> or contact our technical team.

### **Terms and conditions**

---

- Guarantee only valid for products bought direct from Abcam or one of our authorized distributors