




Anti-PKA beta (catalytic subunit) antibody ab187515

7 References [画像数 3](#)

製品の概要

製品名	Anti-PKA beta (catalytic subunit) antibody
製品の詳細	Rabbit polyclonal to PKA beta (catalytic subunit)
由来種	Rabbit
アプリケーション	適用あり: ICC/IF, WB
種交差性	交差種: Human 交差が予測される動物種: Cow, Pig 
免疫原	Recombinant full length protein corresponding to Human PKA beta (catalytic subunit) aa 1 to the C-terminus. Database link: P22694 <div>  Run BLAST with  Run BLAST with </div>
特記事項	<p>The Life Science industry has been in the grips of a reproducibility crisis for a number of years. Abcam is leading the way in addressing this with our range of recombinant monoclonal antibodies and knockout edited cell lines for gold-standard validation. Please check that this product meets your needs before purchasing.</p> <p>If you have any questions, special requirements or concerns, please send us an inquiry and/or contact our Support team ahead of purchase. Recommended alternatives for this product can be found below, along with publications, customer reviews and Q&As</p>

製品の特性

製品の状態	Liquid
保存方法	Shipped at 4°C. Store at +4°C short term (1-2 weeks). Upon delivery aliquot. Store at -20°C long term. Avoid freeze / thaw cycle.
バッファー	pH: 7.30 Preservative: 0.02% Sodium azide Constituents: 49% PBS, 50% Glycerol
精製度	Immunogen affinity purified
ポリ/モノ	ポリクローナル
アイソタイプ	IgG

アプリケーション

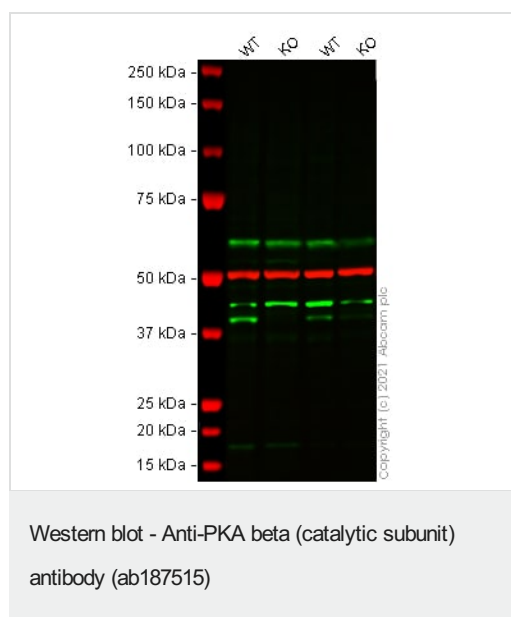
The Abpromise guarantee Abpromise保証は、次のテスト済みアプリケーションにおけるab187515の使用に適用されます
アプリケーションノートには、推奨の開始希釈率がありますが、適切な希釈率につきましてはご検討ください。

アプリケーション	Abreviews	特記事項
ICC/IF		Use at an assay dependent concentration.
WB		1/500 - 1/2000. Predicted molecular weight: 41 kDa.

ターゲット情報

機能	Mediates cAMP-dependent signaling triggered by receptor binding to GPCRs. PKA activation regulates diverse cellular processes such as cell proliferation, the cell cycle, differentiation and regulation of microtubule dynamics, chromatin condensation and decondensation, nuclear envelope disassembly and reassembly, as well as regulation of intracellular transport mechanisms and ion flux.
組織特異性	Isoform 1 is most abundant in the brain, with low level expression in kidney. Isoform 2 is predominantly expressed in thymus, spleen and kidney. Isoform 3 and isoform 4 are only expressed in the brain.
配列類似性	Belongs to the protein kinase superfamily. AGC Ser/Thr protein kinase family. cAMP subfamily. Contains 1 AGC-kinase C-terminal domain. Contains 1 protein kinase domain.
翻訳後修飾	Asn-3 is partially deaminated to Asp giving rise to 2 major isoelectric variants, called CB and CA respectively.
細胞内局在	Cytoplasm. Nucleus. Translocates into the nucleus (monomeric catalytic subunit) (By similarity). The inactive holoenzyme is found in the cytoplasm.

画像



All lanes : Anti-PKA beta (catalytic subunit) antibody (ab187515)
at 1/500 dilution

Lane 1 : Wild-type HeLa cell lysate

Lane 2 : PRKACB knockout HeLa cell lysate

Lane 3 : Wild-type HAP1 cell lysate

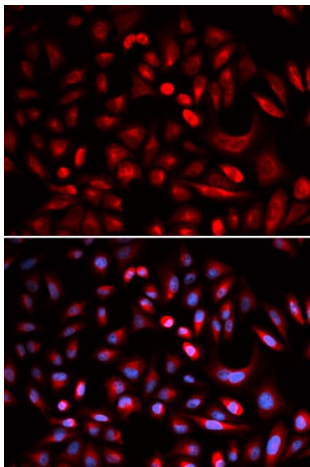
Lane 4 : PRKACB knockout HAP1 cell lysate

Performed under reducing conditions.

Predicted band size: 41 kDa

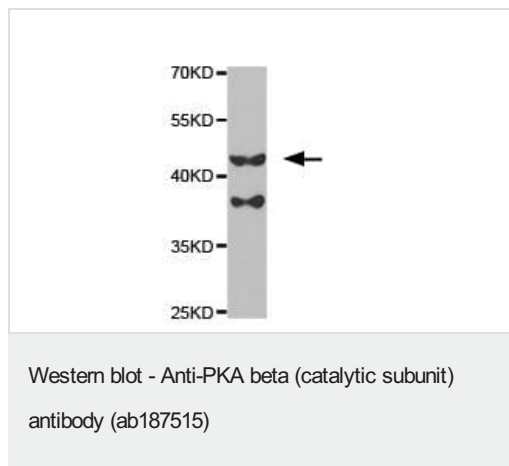
Observed band size: 41 kDa

False colour image of Western blot: Anti-PKA beta (catalytic subunit) antibody staining at 1/500 dilution, shown in green; Mouse anti-Alpha Tubulin [DM1A] ([ab7291](#)) loading control staining at 1/20000 dilution, shown in red. In Western blot, ab187515 was shown to bind specifically to PKA beta (catalytic subunit). A band was observed at 41 kDa in wild-type HeLa cell lysates with no signal observed at this size in PRKACB knockout cell line [ab264673](#) (knockout cell lysate [ab258603](#)). To generate this image, wild-type and PRKACB knockout HeLa cell lysates were analysed. First, samples were run on an SDS-PAGE gel then transferred onto a nitrocellulose membrane. Membranes were blocked in 3 % milk in TBS-0.1 % Tween; 1/20 (TBS-T) before incubation with primary antibodies overnight at 4 °C. Blots were washed four times in TBS-T, incubated with secondary antibodies for 1 h at room temperature, washed again four times then imaged. Secondary antibodies used were Goat anti-Rabbit IgG H&L (IRDye® 800CW) preabsorbed ([ab216773](#)) and Goat anti-Mouse IgG H&L (IRDye® 680RD) preabsorbed ([ab216776](#)) at 1/20000 dilution.



Immunocytochemistry/Immunofluorescence analysis of U2OS cells using ab187515. Blue DAPI for nuclear staining.

Immunocytochemistry/ Immunofluorescence - Anti-PKA beta (catalytic subunit) antibody (ab187515)



Anti-PKA beta (catalytic subunit) antibody (ab187515) at 1/500 dilution + SW480 cell extract

Predicted band size: 41 kDa

Please note: All products are "FOR RESEARCH USE ONLY. NOT FOR USE IN DIAGNOSTIC PROCEDURES"

Our Abpromise to you: Quality guaranteed and expert technical support

- Replacement or refund for products not performing as stated on the datasheet
- Valid for 12 months from date of delivery
- Response to your inquiry within 24 hours
- We provide support in Chinese, English, French, German, Japanese and Spanish
- Extensive multi-media technical resources to help you
- We investigate all quality concerns to ensure our products perform to the highest standards

If the product does not perform as described on this datasheet, we will offer a refund or replacement. For full details of the Abpromise, please visit <https://www.abcam.co.jp/abpromise> or contact our technical team.

Terms and conditions

- Guarantee only valid for products bought direct from Abcam or one of our authorized distributors