

Anti-Piwi antibody ab5207

[1 Abreviews](#) [8 References](#) [画像数 2](#)

製品の概要

製品名	Anti-Piwi antibody
製品の詳細	Rabbit polyclonal to Piwi
由来種	Rabbit
アプリケーション	適用あり: WB
種交差性	交差種: Drosophila melanogaster
免疫原	Synthetic peptide. This information is proprietary to Abcam and/or its suppliers.
ポジティブ・コントロール	This antibody gave a positive signal in Drosophila embryo nuclear extract
特記事項	<p>The Life Science industry has been in the grips of a reproducibility crisis for a number of years. Abcam is leading the way in addressing this with our range of recombinant monoclonal antibodies and knockout edited cell lines for gold-standard validation. Please check that this product meets your needs before purchasing.</p> <p>If you have any questions, special requirements or concerns, please send us an inquiry and/or contact our Support team ahead of purchase. Recommended alternatives for this product can be found below, along with publications, customer reviews and Q&As</p>

製品の特性

製品の状態	Liquid
保存方法	Shipped at 4°C. Store at +4°C short term (1-2 weeks). Upon delivery aliquot. Store at -20°C or -80°C. Avoid freeze / thaw cycle.
バッファー	<p>pH: 7.40</p> <p>Preservative: 0.02% Sodium azide</p> <p>Constituent: PBS</p> <p>Batches of this product that have a concentration < 1mg/ml may have BSA added as a stabilising agent. If you would like information about the formulation of a specific lot, please contact our scientific support team who will be happy to help.</p>
精製度	Immunogen affinity purified
ポリ/モノ	ポリクローナル
アイソタイプ	IgG

アプリケーション

The Abpromise guarantee Abpromise保証は、次のテスト済みアプリケーションにおけるab5207の使用に適用されます
アプリケーションノートには、推奨の開始希釈率がありますが、適切な希釈率につきましてはご確認ください。

アプリケーション	Abreviews	特記事項
WB		

追加情報

WB: 1/500. Detects a band of approximately 90 kDa (predicted molecular weight: 97 kDa). Can be blocked with **Piwi peptide (ab14803)**.

Not yet tested in other applications.

Optimal dilutions/concentrations should be determined by the end user.

ターゲット情報

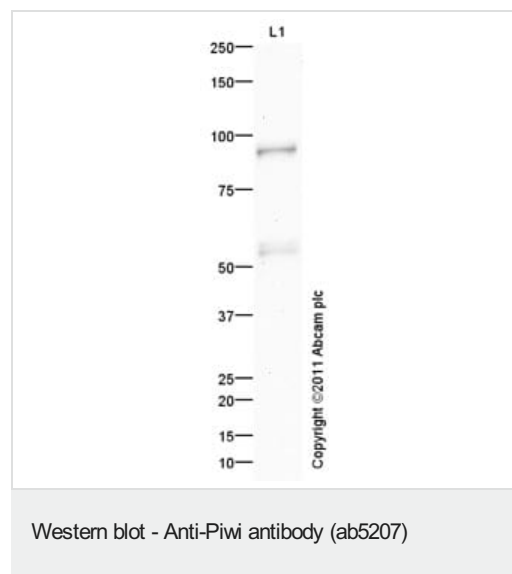
関連性

Piwi mediates a somatic signaling mechanism required for the maintenance of germline stem cells to produce and maintain a daughter germline stem cell. It is not essential for the further differentiation of the committed daughter cell. Acts cell autonomously to promote germline stem cell division. It is expressed somatically in the ovariole terminal filament and epithelial sheath cells. Expressed in the germarium at low levels during oogenesis stages 1-6, at a lower level during stages 7-9, strongly at stage 10 and eventually accumulating in early embryos.

細胞内局在

Nuclear

画像



Anti-Piwi antibody (ab5207) at 1 µg/ml + Drosophila embryo nuclear extract (from melanogaster embryos 0-12Hr) at 20 µg

Secondary

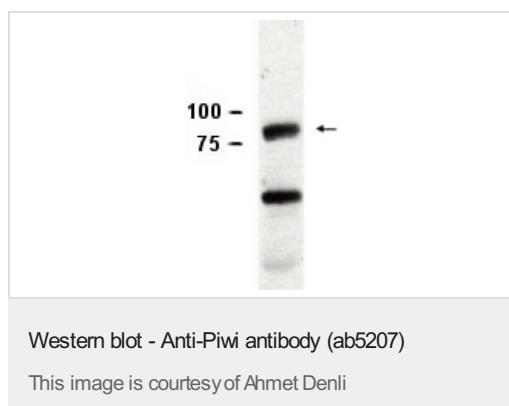
IRDye 680 Conjugated Goat Anti-Rabbit IgG (H+L) at 1/3000 dilution

Performed under reducing conditions.

Predicted band size: 97 kDa

Observed band size: 90 kDa

Additional bands at: 53 kDa. We are unsure as to the identity of these extra bands.



Drosophila embryo lysate, 8% TRIS SDS-PAGE.

The arrow indicates Piwi at a predicted MW of 90 kDa.

Pre-immune sera was used as a control and showed no equivalent band (data not shown).

Drosophila embryo lysate, 8% TRIS SDS-PAGE. The arrow indicates Piwi at a predicted MW of 90 kDa. Pre-immune sera was used as a control and showed no equivalent band (data not shown).

Ahmet Denli

Please note: All products are "FOR RESEARCH USE ONLY. NOT FOR USE IN DIAGNOSTIC PROCEDURES"

Our Abpromise to you: Quality guaranteed and expert technical support

- Replacement or refund for products not performing as stated on the datasheet
- Valid for 12 months from date of delivery
- Response to your inquiry within 24 hours
- We provide support in Chinese, English, French, German, Japanese and Spanish
- Extensive multi-media technical resources to help you
- We investigate all quality concerns to ensure our products perform to the highest standards

If the product does not perform as described on this datasheet, we will offer a refund or replacement. For full details of the Abpromise, please visit <https://www.abcam.co.jp/abpromise> or contact our technical team.

Terms and conditions

- Guarantee only valid for products bought direct from Abcam or one of our authorized distributors