

Anti-PICK1 antibody [L20/8] ab252543

リコンビナント

1 References [画像数 3](#)

製品の概要

製品名	Anti-PICK1 antibody [L20/8]
製品の詳細	Mouse monoclonal [L20/8] to PICK1
由来種	Mouse
アプリケーション	適用あり: WB 適用なし: Flow Cyt, ICC/IF, IHC-P or IP
種交差性	交差種: Mouse, Rat, Human
免疫原	Recombinant fragment. This information is considered to be commercially sensitive.
ポジティブ・コントロール	WB: HeLa whole cell lysate. Mouse and rat brain tissue lysate.
特記事項	<p>This antibody clone is manufactured by Abcam. If you require a custom buffer formulation or conjugation for your experiments, please contact orders@abcam.com.</p> <p>This product is a recombinant monoclonal antibody, which offers several advantages including:</p> <ul style="list-style-type: none">- High batch-to-batch consistency and reproducibility- Improved sensitivity and specificity- Long-term security of supply- Animal-free production <p>For more information see here.</p>

製品の特性

製品の状態	Liquid
保存方法	Shipped at 4°C. Store at +4°C short term (1-2 weeks). Upon delivery aliquot. Store at -20°C long term. Avoid freeze / thaw cycle.
バッファー	pH: 7.2 Preservative: 0.01% Sodium azide Constituents: PBS, 0.05% BSA, 40% Glycerol (glycerin, glycerine)
精製度	Protein A purified
ポリ/モノ	モノクローナル
クローン名	L20/8
アイソタイプ	IgG2a

アプリケーション

The Abpromise guarantee

Abpromise保証は、次のテスト済みアプリケーションにおけるab252543の使用に適用されます

アプリケーションノートには、推奨の開始希釈率がありますが、適切な希釈率につきましてはご検討ください。

アプリケーション	Abreviews	特記事項
WB		Use a concentration of 0.509 µg/ml. Predicted molecular weight: 46 kDa.

追加情報

Is unsuitable for Flow Cyt, ICC/IF, IHC-P or IP.

ターゲット情報

機能

Probable adapter protein that bind to and organize the subcellular localization of a variety of membrane proteins containing some PDZ recognition sequence. Involved in the clustering of various receptors, possibly by acting at the receptor internalization level. Plays a role in synaptic plasticity by regulating the trafficking and internalization of AMPA receptors. May be regulated upon PRKCA activation. May regulate heteromeric ACCN3/ACCN2 channel.

組織特異性

Ubiquitous.

配列類似性

Contains 1 AH domain.

Contains 1 PDZ (DHR) domain.

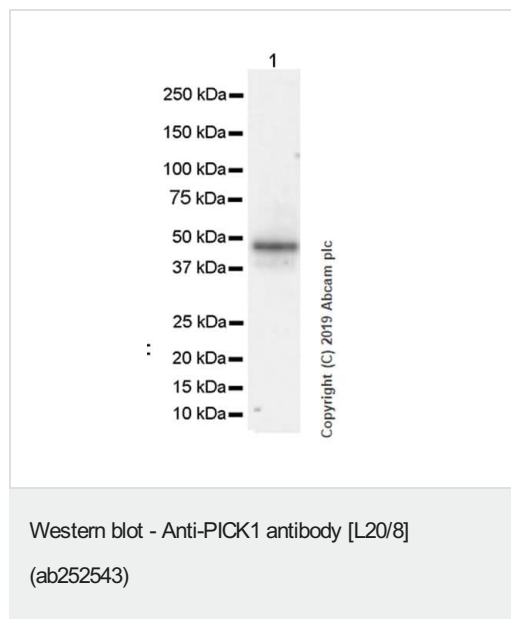
翻訳後修飾

Phosphorylation at Thr-82 appears to inhibit the interaction with AMPA receptors.

細胞内局在

Cytoplasm > perinuclear region. Cell junction > synapse. Also present at excitatory synapses.

画像



Anti-PICK1 antibody [L20/8] (ab252543) at 0.509 µg/ml + HeLa (human cervix adenocarcinoma epithelial cell) whole cell lysate at 20 µg

Secondary

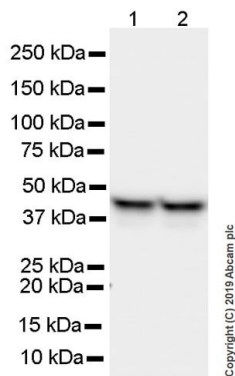
Peroxidase-Conjugated Goat anti-Mouse IgG (H+L) at 1/10000 dilution

Predicted band size: 46 kDa

Exposure time: 3 minutes

Blocking/Dilution buffer: 5% NFDM/TBST.

This blot was developed using a higher sensitivity ECL substrate.



Western blot - Anti-PICK1 antibody [L20/8]
(ab252543)

All lanes : Anti-PICK1 antibody [L20/8] (ab252543) at 0.509 µg/ml

Lane 1 : Mouse brain tissue lysate

Lane 2 : Rat brain tissue lysate

Lysates/proteins at 20 µg per lane.

Secondary

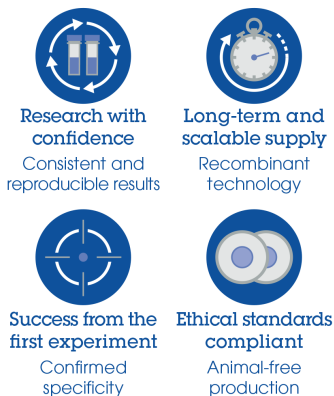
All lanes : Peroxidase-Conjugated Goat anti-Mouse IgG (H+L) at 1/10000 dilution

Predicted band size: 46 kDa

Exposure time: 15 seconds

Blocking/Dilution buffer: 5% NFDM/TBST.

Why choose a recombinant antibody?



Anti-PICK1 antibody [L20/8] (ab252543)

Please note: All products are "FOR RESEARCH USE ONLY. NOT FOR USE IN DIAGNOSTIC PROCEDURES"

Our Abpromise to you: Quality guaranteed and expert technical support

- Replacement or refund for products not performing as stated on the datasheet
- Valid for 12 months from date of delivery
- Response to your inquiry within 24 hours
- We provide support in Chinese, English, French, German, Japanese and Spanish
- Extensive multi-media technical resources to help you
- We investigate all quality concerns to ensure our products perform to the highest standards

If the product does not perform as described on this datasheet, we will offer a refund or replacement. For full details of the Abpromise, please visit <https://www.abcam.co.jp/abpromise> or contact our technical team.

Terms and conditions

- Guarantee only valid for products bought direct from Abcam or one of our authorized distributors